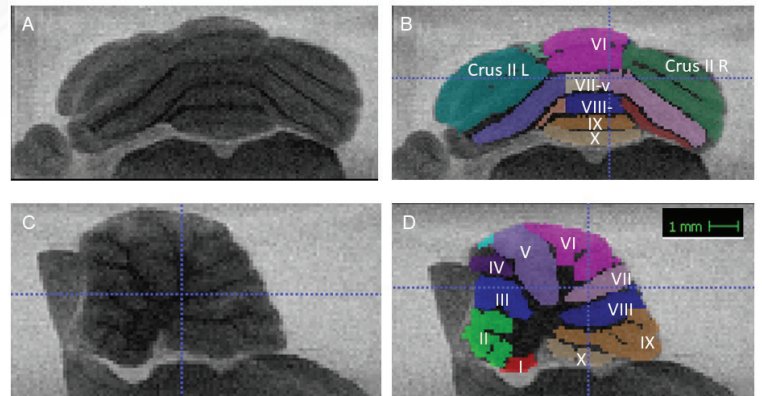


PLAKKE LAB

ARE YOU
INTERESTED
IN RESEARCH
EXPERIENCE?

- The Plakke lab is looking for 4-5 undergraduates to serve as research assistants. Our lab studies executive function deficits in a rodent models of autism and ADHD.
- Behaviors measured include social interactions, and repetitive behaviors, and changes in cognitive flexibility. We are using the VPA (valproic acid) model of autism because it has both construct and face validity and provides a way to examine behavioral changes developmentally.
- Projects include looking at differences in brain volume for frontal and cerebellar regions between control and VPA treated rats. Additionally, we are providing exercise to drive brain plasticity to recover cognitive functions in VPA animals.

PLANNING
TO ATTEND
GRADUATE
SCHOOL OR
MEDICAL
SCHOOL?



STUDENT INVOLVEMENT

Students will have the opportunity to design experiments as well as participate in collecting and analyzing data. A variety of techniques including behavioral handling and training of animals, segmentation of MRI data, and histology can be learned by students. Students can develop a project and present the work at regional or national conferences and can gain valuable experience sharing their research.



EMAIL
Dr. Bethany Plakke
bplakke@ksu.edu

