

Inside this issue

Greetings from the department head	1
Cognitive and Neurobiological Approaches to Plasticity (CNAP) Center	2
Recent award winners	2
MIOP	3
Psi Chi	3
Alumni Advisory Council	4
Faculty news	5
GAPS	7
Obituaries	7
Alumni news	8
Contact us	11

Greetings from the department head



Michael Young, professor and head, Department of Psychological Sciences

Each year as I write this, I consider what issues have been at the forefront of my mind the past year. Finances continue to be a major factor in my role as department head. The changing financial landscape has President Myers leading a major effort to re-examine the university's budget model to ensure our limited resources are distributed in the best way possible. For the 2018-19 academic year, we will be running this new model in parallel with the old budget model to allow the university to tweak the new model before its implementation.

Why am I starting my departmental letter with a discussion of budget models? Budget models reflect an institution's values. When a university is well-resourced, funding of the foundational activities is ensured —

a sufficient number of classes are taught, class sizes are manageable, teaching assistants and tutors are present, buildings are maintained, adequate faculty salaries help to minimize turnover, laboratories are sufficiently resourced, etc. Discussions

about the distribution of resources center on choosing among new initiatives based on their impact on the educational and research missions.

During times of limited resources, units must make tough decisions that affect foundational activities. Should we increase class size, teach using doctoral students, or cancel a classroom software license? What do we value most? These discussions are heart-wrenching and may precipitate even more difficult considerations like combining departments or eliminating a major. These pressures have triggered K-State's pursuit of a new budget model that explicitly outlines the university's values.

What does this mean for psychological sciences? Thanks to the incredible efforts of a number of our faculty who led the way in creating our new COBRE Center (see Kim Kirkpatrick's article in the newsletter), we have significant new resources to help fund new training initiatives, upgrade research facilities and advance our research mission. The COBRE has helped mitigate some budget shortfalls. This funding can only be used for specific purposes, which means that the department's more fundamental activities are still under financial pressure.

Despite these pressures, the Department of Psychological Sciences has maintained its commitment to quality teaching. When a graduate student teaches a class, we keep the class size small and ensure that the teacher has successfully completed our Teaching Apprenticeship Program. Our graduate students have won the all-university teaching award by a doctoral student four out of the last six years, which is a clear sign of their quality. The department has maintained its commitment to quality research that impacts students. We rank near the top of the university in the percentage of undergraduates gaining hands-on experience in research labs and in the number of graduating doctoral students. The department is hard at work trying to generate alternative funding to support teaching assistantships lost due to recent budget cuts. However, some technology upgrades have been delayed and scholarship support continues to lag need.

Higher education across the country has seen adjustments due to decreased public support, and I am proud to say that our department has found efficiencies to allow us to thrive, as you'll soon see. Great organizations find ways to advance their missions during challenging times, not just during the boom years. Our graduate and undergraduate students are partnering with us to help one another to succeed, furthering the department's mission of educating the next generation of citizens, generating scientific knowledge that improves human welfare, and serving the society in which we reside. Our commitment to each other is a Wildcat value!

With K-State Pride,

— Mike Young

Cognitive and Neurobiological Approaches to **Plasticity (CNAP) Center**



CNAP reception with Amit Chakrabarti, dean of the College of Arts and Sciences.

The CNAP center, which was funded by a \$10.6 million five-year grant in July 2017, is up and running. We are working on renovating the Behavioral Neuroscience facility, which should be finished in September. We are building a new Neuroinformatics core in the new engineering complex at K-State and this should open in the summer and will support neuroscience data storage, sharing and analysis. The Driving Simulator core at Wichita State University should be open next fall and will support research on driving skills in aging populations. The center hosted a number of events, including invited talks, a weekly brown bag and two computing workshops. We also funded four primary projects (Bailey, Cain, Ni and Pickens) and will be funding additional pilot grants in the summer. We hired 23 staff, including full-time staff, graduate research assistants and undergraduate students, to work on our projects and cores. We launched three new programs in the summer, including our postdoctoral training program, pilot grant program and scientific exchange network. We

hosted our first site visit June 20-21, where we showcased the science supported by the center as well as the research infrastructure developments. For more details on CNAP projects, cores, programs and events please visit k-state.edu/cnap.

— Kim Kirpatrick

Recent **Award Winners**

The Department of Psychological Sciences is pleased to announce this year's departmental award winners. Most of these undergraduate and graduate students were honored at an event April 24, 2018. The Shanteau Fellows were recognized at the department's Undergraduate Research Convocation May 1, 2018.

Nick Parker (senior, Overland Park) received the Dr. Leon Rappoport Psychology Undergraduate Scholarship. This scholarship honors the memory of a member of our department and is targeted at a non-traditional, high-achieving student. Nick is minoring in business and conducted research in Heather Bailey's cognitive psychology laboratory.



Nick Parker receiving the Rappoport award.

Jennica Rogers (senior, Manhattan) received the John C. Peterson Undergraduate Scholarship Prize for outstanding graduating senior. She was the Psi Chi Honor Society treasurer this past year, conducted research in Heather Bailey's lab, is a McNair Scholar, and after graduation will be conducting research in Bailey's lab as a postbaccalaureate scholar.



Jennica Rogers receiving the Peterson Prize.

Undergraduate Research Award. Her research with Kirpatrick entailed the study of factors that alter impulsive choice, specifically high-fat and high-sugar diets and insulin.

Jessica Pirkle (senior, Jacksonville, Illinois) is this year's recipient of the E. Jerry Phares



Jessica Pirkle receiving the Phares Award.

award. She has been a Chapman scholar, a Shanteau fellow and a College of Arts and Sciences ambassador, among many other recognitions. This fall, she will attend medical school at the University of Illinois.



Sarah Novak receiving the Curtis Lee and JB Gee Psychological Sciences Scholarship.

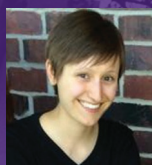
Sarah Novak (junior, Little Rock, Arkansas) is the winner of the Curtis Lee and JB Gee Psychological Sciences Scholarship. This award is based on a combination of

academic achievement and financial need. Sarah was a member of Phi Theta Kappa at her junior college.

Emma Brase (junior, Manhattan), **Madison Schaller** (junior, Overland Park), **Jordan Voss** (junior, Hays), and **Jaylee York** (junior, Scott City) are recipients of the Doreen Shanteau Undergraduate Research Awards. These awards enable students to conduct research with their faculty mentors during the following academic year. Emma will be working with Mary Cain to examine the effects of alcohol and environmental rearing condition on protein levels in the rat brain that are responsible for addiction-related behaviors. Jordan will be studying the factors that people use to identify emails as phishing (for personal information) versus valid; he will be working with Michael Young. Madison will be investigating the relationship of adherence to masculine honor beliefs and the perceptions of responses to familial insults on social media in Don Saucier's lab. Jaylee will research the relationship between white feminism and racial prejudice, also in the Saucier laboratory.



Shanteau award winners Jordan Voss, Emma Brase, Madison Schaller and Jaylee York with Mike Young.



Outstanding Graduate Instructor, Lisa Vangness.

The Outstanding Graduate Instructor Award was presented to **Lisa Vangness** (Aurora, Illinois). Lisa has taught General Psychology, Judgment and Decision Making and Experimental Methods Laboratory. She received a monetary award thanks to the Nobuko S. Nicholson Opportunity Fund for psychological sciences.

The Outstanding Graduate Research Award/Harry Helson Memorial Scholarship had three recipients this year: **Conor O'Dea** (Manhattan), **Ryan Ringer** (Kansas City) and **Catherine Steele** (Katy, Texas). All three have published multiple



Helson Scholarship winners: Catherine Steele, Conor O'Dea, Ryan Ringer.

research papers in leading psychology journals. Conor is completing his degree with Don Saucier, Ryan with Les Loschky, and Catherine with Kim Kirkpatrick.

The department also announced two winners of the Outstanding Graduate Teaching Assistant Award: **Hayley Fisher** (Nashville,

Tennessee) and **Evelyn Stratmoen** (Oklahoma City, Oklahoma). Their awards were funded by the department's Graduate Teaching Assistant Support Fund that has been generously supported by a number of alumni.



Outstanding Graduate Teaching Assistants Hayley Fisher and Evelyn Stratmoen.

The Dunlap Fellowship in Industrial Psychology was awarded to **Kelsey Couture** (Great Bend), **Frank Giordano** (Brooklyn, New York), **Stacy Stoffregen** (Minneapolis, Minnesota)



Dunlap winners Frank Giordano, Stacy Stoffregen, Kelsey Couture and Nathan Voss at SIOP (Society for Industrial/Organizational Psychology) Conference in Chicago.

and **Nathan Voss** (Wausau, Wisconsin). This year the fellowship was awarded to second-year doctoral students in our I/O doctoral program who were doing well in assistantships, demonstrated productive research activity and were making strong progress toward their degree.

At the university level, **Stuart Miller** (Wamego) was one of



Stuart Miller (far left)

three winners of the University Distinguished Professors (UDP) Graduate Student Research Awards for excellence in scholarship.

Also at the university level, two psychological science department members won Presidential Awards for Excellence in Undergraduate Teaching: **Amanda Martens** (Shelby, Iowa) at the graduate student level, and **Heather Bailey** at the faculty level.



Amanda Martens receives the graduate student Presidential Award for Excellence in Undergraduate Teaching.



Heather Bailey receives the faculty Presidential Award for Excellence in Undergraduate Teaching.

MIOP

The MIOP program kicked off its 19th year in July 2018. While the incoming class was not yet finalized at the time of this writing, during the first 18 years the program enrolled 225 students. At the end of the spring 2018 semester, 26 students were continuing in the program, and of the remaining 199 students, 175 had received their master's degrees, for a completion rate of 88 percent. Women have accounted for 64 percent of MIOP students, 12 percent have been in the military (U.S. and Canadian), and 25 percent have been Kansas residents.

This year, MIOP graduate Julio Manso (2009) was named the Global Campus Alumni Fellow for 2018. Julio is a director of human resources for JP Morgan Chase and is the second MIOP graduate to receive this honor.

If you are interested in learning more about the MIOP program, please visit global.k-state.edu/artsci/miop or contact us via email at miopsych@k-state.edu.

— Patrick Knight

Psi Chi

This was another active year for Psi Chi under the leadership of Ian Davis, president; Abby Basham, vice president; Madison Reith, secretary; Jennica Rogers, treasurer; and Heather Bailey, faculty advisor. Their activities included a panel about applying for graduate school, curriculum vita and personal statement writing workshop, hot chocolate fundraiser for campus food pantries, field trip to Glore Psychiatric Museum, and a used clothing drive. They hosted the annual awards banquet at a new location: Blue Moose. The banquet honored all of the wonderful, award-winning students in our department. In June, the chapter learned that it won the Model Chapter Award for 2017-2018. The incoming officers for 2018-19 are Shaylene Rees, president; Janet Matos, vice president; Willow Willingham, secretary; Mallory Line, treasurer; Taylor Beashore, webmaster and social media; and Jaylee York, ambassador.

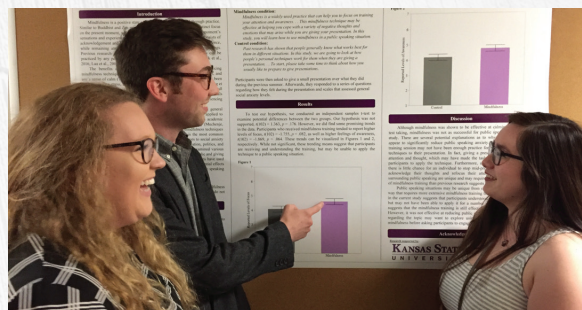
— Heather Bailey



Mike Finnegan, assistant professor of leadership studies, spoke at the Psi Chi banquet.



Current and newly elected Psi Chi officers: Madison Reith, Jennica Rogers, Abby Basham, Ian Davis, Mallory Line and Janet Matos.



Incoming Psi Chi President Shaylene Rees, Tanner Tavis, and Angela Rose discuss research at the Undergraduate Research Convocation.

Alumni Advisory Council

The 11th annual Alumni Advisory Council meeting took place Friday, Oct. 6, 2017. Milt Ahlerich, Gail Antenen, Mitch Brigell, Thomas Clark, Will Conaway, Richard Felton, Frank Ferraro, Ganet Gee, Amy Gross, J. Andy Karafa, Sandi McCoy Kramos, Desirae Mckenzie Moreno, Doug Peterson, Steve Quakenbush, Kenneth Sewell, Rick Thomas, Mike Troutman and Kelly Watson were present. New faculty members Bethan Plakke (BN/AL) and Jason Wall (academic advisor) introduced themselves.

There was an update on the biomedical research grant. **Kim Kirkpatrick** discussed the COBRE grant. K-State, partnered with WSU and KU Medical, received the \$10.6 million grant. At the time of the meeting, the grant was 12 weeks old and in its early stages. Sixteen research staff, including the grant manager and many students, have been hired to date. An advisory committee has been recruited. The building and research space renovation is being planned. Information tracking and research systems are in place, along with an official website.

The Cognitive Program featured a presentation by **Heather Bailey**. Her COBRE project examines the use of experience and knowledge in older populations to increase performance in memory tasks. She also discussed professional development changes in the graduate programs: updating the preliminary program examination process due to issues in communicating expectation and guidelines, graduate student stipend increase from \$10,500 to \$15,000, recruitment with the development of the neuroplasticity center, and a scientific exchange program which will allow other participating university students (from KU Med Center, WSU and North Dakota among others) to train in EEG, math modeling, and provision of network and professional development.

Mike Young reported on Judgment and Decision-Making research; **Lester Loschky** reported on Visual Cognition, Perception Retention and processing of information that subjects encounter in their visual environment; and **Gary Brase** reported on Judgment and Decision-Making research, social decision statistical reasoning, medical test results and errors in calculation. Through discussion with the Alumni Advisory Council, additional points and suggestions were made. The percentage of students who go from labs to graduate school is around 60 percent, but not into the cognitive program. There is a lack of general focus to help find internships for students. More engagement of local and alumni-based collaborations for scholarship may be helpful.



Alumni Advisory Council

Mike Young delivered a department head report. Then, the 2019 chair, **Desirae Mckenzie Moreno**, was selected. **Emily Mahoney**, from the KSU Foundation, reviewed and discussed Foundation goals. Several suggestions were made including meeting with people one-on-one; alumni engagement; and facilitating gifts, annuities and contributions.

For the afternoon, **Kenneth Sewell** presented "Hard-Wiring Your Career Path for Flexibility and Growth: The Secret Might be Right Here in Bluemont Hall!" After his presentation, council members took part in events that allowed mingling with K-State psychology students, opportunities for questions and one-on-one discussion through a panel discussion or a less-structured meet and greet. Finally, all members of the Alumni Advisory Council were invited to visit graduate student research posters and presentations.

Anyone interested in becoming a council member should contact Mike Young at 785-532-0602 or michaelyoung@k-state.edu. Please send a statement of your interest and your current employment situation. Current council members can be found at k-state.edu/psych/alumni/advisorycouncil.

— Janet Gee

Two Psychology Alumni Chosen as Alumni Fellows

Julio Manso and **Kenneth Sewell** were selected as Alumni Fellows for Global Campus and the College of Arts and Sciences, respectively. Only 12 alumni across the university are chosen annually for these prestigious awards. Manso and Sewell join five previous alumni fellows selected from our department. The faculty are very proud to count these outstanding individuals as alumni of our program.

Manso is managing director of human resources at J.P. Morgan Chase and Co. in San Antonio, Texas. Before this position, he was the head of human resources for Clear Channel Outdoor, North America. He graduated from K-State in 2012 with a master's degree and specialization in industrial and organizational psychology. Manso just completed a three-year term as board chair of the South Texas Boys & Girls Club, during which he directed a \$4 million capital campaign to acquire a new facility.

Sewell serves as the vice president for research at Oklahoma State University. He previously served the same role for the University of New Orleans. Sewell graduated from K-State in 1986 with a bachelor's degree in psychology and earned his doctorate in clinical psychology from the

University of Kansas in 1991. Sewell has served on the department's alumni council since 2007, and along with his wife, Beth, recently established a scholarship for undergraduate psychology majors conducting research.



Julio Manso



Kenneth Sewell

Faculty News

New Faculty



MATTHEW G. WISNIEWSKI

Matt G. Wisniewski received his doctorate in cognitive psychology from SUNY Buffalo and was a postdoctoral fellow at the U.S. Air Force Research Laboratory in Dayton, Ohio. He has held visiting positions at the Swartz Center for Computational Neuroscience (UC San Diego), the University of Richmond, and the Max Planck Institute for Human and Cognitive Brain Sciences in Leipzig, Germany. Using the electroencephalogram (EEG), psychoacoustics, and artificial neural networks, his research focuses on how experience impacts listening abilities. He is extremely excited to continue this work in the psychological sciences department at K-State. In his free time, Matt enjoys a good round of golf and playing music.



ALEXANDRIA ZAKRZEWSKI

Alexandria "Ali" Zakrzewski will be joining the cognitive/human factors area of psychology at K-State as a research assistant professor. During graduate school at the University at Buffalo, she studied categorization and uncertainty monitoring in humans and rhesus macaques. She did her postdoctoral work at the University of Richmond, studying aging and

metacognition. Her research is focused on how individuals' confidence judgments predict performance accuracy during psychophysical discrimination tasks as well as exploring neural correlates of confidence using EEG. She plans to continue this work by examining effects of learning on metacognitive ability. Ali enjoys yoga and film photography.

Individual Faculty News



Troy & Heather Bailey in Ghent, Belgium.

HEATHER BAILEY

This year, Heather Bailey won the Presidential Award for Undergraduate Teaching Excellence and she was one of the researchers funded by the NIH COBRE grant. Her lab has been working hard on this COBRE-funded research, which investigates how older adults use their knowledge and experience to learn new information. Heather and her students have been traveling to conferences in Chicago, Atlanta, Vancouver and Amsterdam to present

this work. Following the conference in Amsterdam, Heather and her husband, Troy, decided to travel across the Netherlands and Belgium. Her sons, Cooper and Cole, are also keeping her busy. Cooper, 7, is in first grade and is a sports fanatic, and Cole, 3, is obsessed with dinosaurs.

MARK BARNETT

Mark Barnett, who joined the faculty in 1975, continues to be active in research, teaching and co-directing (with Don Saucier) the highly successful Teaching Apprenticeship Program for graduate students. Mark's son, Neil, continues to live and work in Overland Park. However, his daughter, Megan, and son-in-law, John, have returned to Minnesota to work for Cargill. Mark's wife, Valerie, continues to work as an



Mark Barnett's grandchildren: Ileah Brennan, Jocee Robb, and Roark Brennan.

instructor in the Department of Management in the College of Business Administration at K-State. Mark and Valerie treasure the time they get to spend with their grandchildren: Ileah and Roark Brennan, and Jocee Robb.



Laura and her sister, Diana, in front of the Moai ruins at Easter Island.

LAURA BRANNON

Laura Brannon continues her research on attitudes and health/prosocial communication. Her students are working on messages promoting forgiveness, befriending the lonely, and encouraging responsible eating, tanning, and exercise behaviors. Over the summer, she went to Easter Island (one of the most remote inhabited islands in the world) to see the enigmatic Moai ruins, Tahiti, Chile and New Zealand with her sister and had a few new adventures. In Auckland, Laura did a 60-story bungy-style jump from the Sky Tower.

GARY BRASE

Gary Brase has continued doing research and serving as the graduate program director. He created a webpage for his lab (k-state.edu/psych/braselab) and hosted the annual Oklahoma/Kansas Judgment and Decision-Making Workshop at K-State this year. After visiting Italy this past summer, he has been sitting in on Italian language classes. Gary and his wife, Sandra, are celebrating their son Alex's graduation from K-State this year and his job as the digital media director for the Kansas Democratic Party. Their daughter, Emma, will be at the University of Michigan this summer for a NIDA research program on genes and addictive behavior.

MARY CAIN

Mary Cain continues to work with outstanding undergraduate students. Emma Brase and Joanne Gomenodoza were both selected for summer internships supported by the National Institute of Drug Abuse. Emma will be conducting research at the University of Michigan and Joanne will be conducting research at the University of Iowa. Her undergraduate and graduate students presented several papers at the Society for Neuroscience meeting this fall. Mary enjoyed giving an invited talk at the University of Wyoming this fall and visiting former undergraduate Emily Jorgensen, who is doing well in her neuroscience doctoral program. Mary is excited about the COBRE grant, facility renovations and the opportunities these changes will offer our behavioral neuroscience program.

CLIVE FULLAGAR

Clive Fullagar continues to be productive in both research and teaching. He will fully retire in May 2019. He continues to exhibit his art both locally and throughout Kansas. He enjoys spending time with his grandchildren.

KIM KIRKPATRICK

Kim Kirkpatrick has had a very busy year as director of the new Cognitive and Neurobiological Approaches to Plasticity Center and director of the behavioral neuroscience core. She has been busy supervising three graduate students, a full-time research assistant and a new postdoctoral fellow, as well as a host of undergraduate students.

Her lab focuses in impulsive choice behavior and interventions to promote healthier choices. Kim's husband, Stuart, moved into an instructor position in the social psychology area this year and their son, Sam, is a junior history major at K-State. The family enjoys spending time camping, gardening, trail running, hiking and traveling. They purchased a new off-road pop-up camper last fall and are looking forward to taking it to Colorado in the summer.

PATRICK KNIGHT

Pat Knight spends as much time with his grandchildren as often as possible. Photography and playing the saxophone, which he's done for more than 50 years, also keep him busy. As director of the MIOF program, he has overseen its continued growth and is looking forward to its 200th graduate next year.



Christopher Lake at Christopher Lake.

Chris' research lab has grown and now consists of two graduate and five undergraduate students. On a personal note, Chris' wife of nearly five years, Kim, has accepted a position at K-State and moved to Manhattan. As always, Chris enjoys the outdoors and nature, including activities like hiking, camping and nature photography. In summer 2017, Chris realized one of his lifelong dreams by driving to visit the town of Christopher Lake in Saskatchewan, Canada.

JIN LEE

Jin Lee continues his research on occupational safety/health disparity concerning work arrangement and culture. Specifically, he has been investigating the risk-benefit appraisal patterns among temporary workers in relation to their safety and risk-taking behaviors. Also, he has been working on a study regarding development and validation of safety climate scales for English-, Spanish- and Chinese-speaking workers along with Yueng-Hsiang Huang from National Taiwan University. Jin continues working with Jennifer Taylor from Drexel University on projects funded by Federal Emergency Management Agency (FEMA) and the U.S. Department of Homeland Security (DHS) to promote workplace safety and health among fire fighters and emergency medical technicians. Jin will be travelling different regions of U.S. during the summer with the project team in order to provide workshop sessions on occupational safety and health in the fire service industry.



Les Loschky petting a deer in Nara Park, in Nara, Japan.

CHRIS LAKE

Chris Lake has continued to pursue research about workplace satisfaction and commitment, with particular emphasis on people who frequently change jobs. He recently gave a talk on this topic to university leaders at the K-State directors' roundtable.

husband, Chris, bought their first house in Boston after house-hunting for two years.

GREG MONACO

Greg Monaco retired from K-State this fall and has been appointed research associate professor emeritus while continuing to work on projects at the university. He started a new division of his company, Research Advisors Associates, which assists smaller campuses with grant proposal development. Greg and Jeanne Tomiser's daughter, Elise, was married on May 19 in Kansas City.



Auggie and Nate Pickens

CHIP PICKENS

Chip Pickens and his wife, Sarah, had their second child in August. Nate loves his big brother Auggie, and the feeling is mutual. In addition, the Pickens lab sent several students to conferences to present their research, and had a new paper published on the effects of alcohol on fear and anxiety.



Bethany Plakke with her husband, Eric, and daughter, Natalie.

BETHANY PLAKKE

Bethany Plakke has been setting up her lab and developing her research program focused on utilizing an animal model of autism to examine changes in cognitive flexibility. She has enjoyed teaching and having undergraduates participate in data collection. At home, her husband, Eric, and daughter, Natalie, are enjoying exploring the Manhattan area.

DON SAUCIER

Don Saucier and his students presented their research at the conferences for the Society for Personality and Social Psychology (Atlanta) and the Midwestern Psychological Association (Chicago) this past year. They also conducted and published research on topics ranging from masculine honor ideology, to perceptions of racial slurs and racial humor, to social vigilantism, to beliefs in pure evil. Don is happy to see several of his undergraduate research collaborators off to graduate school.



Mike Young's grandchildren, Emily and Calvin.

MICHAEL YOUNG

Mike Young loves teaching graduate courses in statistics and research methodology. His junior seminar class continues to influence students' career decisions thanks to presentations by our own alumni: Lisa Way, Sandra McCoy and Tom Clark, among others. Mike was honored by his election to the board of directors of COGDOP, a national organization of leaders of graduate psychology departments. He is continuing to enjoy his two grandchildren, Calvin and Emily, and most of his family visited Kansas in July for his mother's 90th birthday.

LES LOSCHKY

Les Loschky is finally taking his first sabbatical leave (in his 13th year at K-State) to Kyoto, Japan, with his wife, Miki. In the mornings, he Skypes with his grad students and colleagues in the CNAP Center. In the afternoons, he collaborates with colleagues at Kyoto University (his host is Jun Saiki) where he is employed as a visiting research professor. On weekends, Les and Miki

enjoy exploring the temples and shrines in Kyoto, the cultural Mecca of Japan. Les has also been giving occasional talks at other Japanese universities (e.g., Osaka U., Tohoku U., Hokkaido U.). Les and Miki's daughters, Althea and Sophia, are both doing very well. Althea and her

GAPS

The 2017-2018 academic year was successful for the Graduate Association of Psychology Students at Kansas State University.

GAPS hosted professional development events led by inspiring individuals in our own department. Topics included staying motivated and productive, standing out in graduate school, increasing the theoretical rigor of research, and networking. GAPS also sponsored the first Alumni Council Graduate Student Research Poster Session. This sparked excellent conversation between our graduate students and alumni. In addition, we were able to host fun activities including Welcome Week, a Halloween party, a chili cook-off/holiday party, trivia with Psi Chi, and the end-of-year banquet at Blue Moose.

We are excited for next year and thank the department for all its support and efforts to help make these events possible. We look forward to seeing a whole new group of excellent officers next year including: Tiffany Lawless, president; Angela Rose, vice president; Nicholas Gallivan, treasurer; and Evelyn Stratmoen, mentor chair.

— Conor O’Dea, GAPS president



Newly elected GAPS officers: Evelyn Stratmoen, Tiffany Lawless, Angela Rose and Nicholas Gallivan.

Obituaries

Lodis Rhodes, with a teaching career spanning 42 years at the LBJ School of Public Affairs at the University of Texas at Austin, died on Aug. 3, 2017. He was 71 years old.

Professor Rhodes joined the faculty of the LBJ School in 1974 and taught courses in management, building and sustaining local communities, technology, and education policy. Before his appointment at the LBJ School, he was a fellow of the American Council on Education and created the Institute for Ethnic Studies at the University of Nebraska. Dr. Rhodes previously served as associate dean of academic affairs and research at the LBJ School; assistant to the president, vice president and provost of The University of Texas at Austin; and coordinator of African-american studies at the University of Nebraska.

Dr. Rhodes was co-founder and chairman of the board of the Austin Learning Academy, a community-based research and development laboratory that focuses on education. He was the former chairman of the board of commissioners of the Austin Housing Authority; task force member of Environmental Equity and Justice; editorial board member and advisor of the Texas Center for Educational Research; and director of the National Forum for Black Public Administrators.

Dr. Rhodes received a doctorate in social psychology from the University of Nebraska, 1972; M.S. in psychology from Kansas State University, 1970; and a B.A. from Kansas State University, 1968.

Dr. Rhodes attended the K-State Psychological Sciences Alumni Council meetings in 2015 and 2016. Mike Young recalls Dr. Rhodes mentioning that fewer than 50-60 black students attended at that time, and nearly all were at K-State on athletic scholarships. The department remembers him as a genuine man who provided helpful insights. He will be missed.



Alumni News

These updates come from numerous undergraduate and graduate alumni through the decades. It is always interesting and gratifying to hear that majoring in psychology can prepare students for an extremely wide variety of careers. While some of our graduates are actively pursuing careers doing exactly what they prepared for at K-State, many others are using their psychology degrees in ways they probably never dreamed. Please continue to send news and pictures for future newsletters to lbrannon@k-state.edu.

1972

Mike Murry, B.S., 1972, attributes his acceptance into a clinical psychology program to the K-State psychology department and honors program. The honors program required demanding research and his work was recognized by the psychology department through co-awarding him the Peterson Prize. October 2017 marked 40 years of full-time work as a clinical psychologist and he is now a senior clinical science officer in the Commissioned Corps of the U.S. Public Health Service. His experience at K-State prepared him to work alongside talented professionals. Murry credits his wonderful career to his K-State research project that made his graduate program application stand out and enabled his acceptance. Murry shares that the discipline and tenacity it took to complete the project was great training for many challenges he's faced over the years. He thanks K-State psychology!



Mike Murry

1979

Bill Deeds, Ph.D., 1979, will have completed 19 years as chief academic officer and provost at Morningside College in Sioux City, Iowa, and will retire in May 2019. Before his time at Morningside, he spent 19 years at Moravian College in Bethlehem, Pennsylvania, as a faculty member, chair of the Department of Psychology, and dean for academic affairs. Bill and his wife, Pam Hoadley, are planning to relocate to Greenville, South Carolina.

1986

Ken Sewell, B.S., 1986; Ph.D., 1991 from KU, was selected as a K-State Arts and Sciences Alumni Fellow for 2018. He and his wife, Beth, are enjoying life in Stillwater, Oklahoma. In addition to being happy to be back working at a land-grant university in the correct athletic conference (they wear a lot of orange and save their purple for trips north), they are delighted to be closer to Ken's parents and Beth's siblings (in Iowa) than they have ever been. As empty nesters, they are living the good life with puppies and grandchildren and even a little cabin by a lake outside of Stillwater. Come visit!



Ken Sewell (#55) when he was playing for the Cats in their "not-so-glory years," as he calls them.

1987

Michael Klassen, Ph.D., 1987, recently retired after teaching marketing for 30 years at the University of Northern Iowa in Cedar Falls, Iowa. He and his wife, Emily, recently moved to Santa Barbara, California, where their son, Robb, lives. Mike is currently teaching psychology at Westmont College in Santa Barbara.

1992

Edmond Leboeuf, B.S., 1992, and his spouse, Lyuda, live in Topeka with their children, Maria and Sophia. They spend their free time supporting Lyuda's chess career (she ranks in the top 15 among females in the U.S. for Blitz Chess). They also travel, having visited Turkey, Poland, Russia, Germany, Finland and Ukraine in the past two years.

1993

Christina S. Sinisi, Ph.D., 1993, is finishing up her third year as chair of the Department of Behavioral Sciences at Charleston Southern University in Charleston, South Carolina, where she has been a faculty member for 24 years. She is also finishing her term as southeastern vice president for Psi Chi. She is married to Kyle, who is a history professor at the Citadel.

1995



Amy Gross

Amy Gross, Ph.D., 1995, has been named executive vice president of operations and training for Dale Carnegie.

Mary Lewis, B.S., 1995, is president of the Ohio Psychological Association, which is the one of the largest state psychological associations in the nation. She continues as an assistant professor at Columbus State Community College and coordinates the largest service-learning course, Human Growth and Development Across the

Life-Span, across the college. She also assists with a professional development diversity training series titled "Culturally Responsive Teaching," and conducts research on efficacious teaching and learning strategies. She continues to work at Senior Life Consultants Inc., a group practice. Her children are 5 and 8 and a constant source of joy. She ran in the Chicago Marathon in October.



Mary Lewis at the APA convention in August 2017 with the Original Bobo doll from Bandura's classic experiments.

1996



Steven W. Quackenbush

Steven W. Quackenbush, Ph.D., 1996, is chair of the Division of Psychology and Human Development at the University of Maine, Farmington. Though a generalist by inclination, he has a longstanding interest in narrative approaches to the study of moral development. Representative publications include "And Yet Your Duty is to Hope: The Positive Psychology of Jean-Paul Sartre" (Quackenbush, Lockwood, & Cyr, 2016), and "Theoretical Unification as a Practical Project: Kant and the Tree of Knowledge System" (Quackenbush, 2008). In his free time, he enjoys listening to music and exploring the many trails in the foothills of central Maine.

1999

Josh Bleeker, B.S., 1999, graduated from Dallas Theological Seminary with a DEdMin (Doctor of Educational Ministry) in 2016. He now serves as dean of DTS-Washington, D.C. His wife, Eva Redington Bleeker, B.A., 2000, in English creative writing, graduated from Columbia University, Manhattan, New York, with an M.S. in narrative medicine.

2003

Desirae (McKenzie) Moreno, B.S., 2003, is in private practice in Wichita and an adjunct faculty member at Wichita State University.

2004

Fred Sanborn, Ph.D., 2004, is working on the seventh edition of his textbook with Dick Harris, "A Cognitive Psychology of Mass Communication." Fred just finished his 14th year at North Carolina Wesleyan College, was promoted to full professor in 2015 and serves as assistant director of the college honor's program. This year, Fred celebrated his fourth wedding anniversary with Tony Hefner.

2006

Jeff Bartel, Ph.D., 2006, is an associate professor of psychology at Seton Hill University in Greensburg, Pennsylvania. He was granted tenure in 2017 and currently teaches courses in sex and gender, child development, personality theory, the professional seminar and, of course, intro to psych. He also coordinates the internship program and conducts research with the department's undergraduate students. Jeff lives in the North Hills of Pittsburgh with his spouse, Tracy, and their children, Nickolas, 17, and Julie, 13.

2010

Kale Monk, B.S., 2010, received her doctorate from the University of Illinois in 2017 and is currently an assistant professor at the University of Missouri.

2012

Tyler Freeman, Ph.D., 2012, is an applied researcher and consultant with ICF Inc., bringing cognitive psychology training and education to the study and improvement of military leaders' cognitive performance. This work includes projects such as the development and validation of a purpose-built cognitive aptitude test for Army captains and the derivation and testing of a theory regarding how individual cognitive processes such as situation awareness and judgment emerge as team-level phenomena in the course of team interaction. Tyler lives and works in the Kansas City area and has two children, Liv, 6, and McLane, 4.

Robin Helget, B.S., 2012, received a M.S.W. degree from the University of Kansas in 2014 and is a millennial coach and therapist for Resolve Counseling and Wellness, Lawrence.

Adam Larson, Ph.D., 2012, finished his fifth year at the University of Findlay and will be applying for tenure and promotion in November. He and his wife, Manoelita, will travel to Brazil this summer to celebrate their second wedding anniversary.

Tommy May, B.S., 2012, completed his doctorate in I/O psychology at Central Michigan University in 2017 and is a talent management consultant for Walgreen's Great Chicago in Deerfield, Illinois.

Morgan Pearn, B.A., 2012, completed a M.S. in I/O at Middle Tennessee State University and is a people analytics specialist for eviCore Healthcare in Nashville, Tennessee.

2013

Trey Hill, Ph.D., 2013, is chair of the Department of Psychology at Fort Hays State University. He was promoted to associate professor with tenure recently. Most importantly, he and his wife, Amy, are expecting their first son in late July! His name will be Quinn Powell Hill.

Stephen Nettelhorst, Ph.D., 2013, received tenure and was promoted to associate professor of psychology this spring at Southeast Missouri State University. He currently conducts research in social cyberpsychology to investigate how people think about, interact with and influence one another within digital domains. He has published and presented multiple studies within his Social Cyberpsychology Lab regarding social influence. One of his goals this summer is to attend the 2018 Western & Southern Open tennis tournament in Cincinnati to celebrate his recent promotion.

2014

Austin Ponton, B.S., 2014, is a key account manager at Remy Cointreau in Denver, Colorado.

2015

Lora Adair, Ph.D., 2015, is an assistant professor at the University of Central Arkansas.

Haley Dillon, Ph.D., 2015, is a visiting assistant professor at Dominican College.

2016

David Arndt, Ph.D., 2016, is a clinical project associate for a medical affairs company, and **Chelsea Schnabelrauch Arndt, Ph.D., 2016**, is the product manager for a data analytics firm. They live in the Chicago suburbs with their daughter, Kendall, born in November 2017.



David, Kendall and Chelsea (Schnabelrauch) Arndt

Robin Besse, Ph.D., 2016, works as a research analyst for the Center for Rural Health at the University of North Dakota School of Medicine and Health Sciences.

Whitney Jeter, Ph.D., 2016, has been an assistant professor at Fort Hays State University for two years. She recently received the Outstanding Scholarship Award for the College of Health and Behavioral Sciences. Whitney also was selected to serve as an assistant IRB administrator for the university and served as the editor for a new edition of a social psychology textbook. Whitney and her fiancée, Brett, married this June in Hawaii.



Whitney Jeter receiving the Outstanding Scholarship Award.

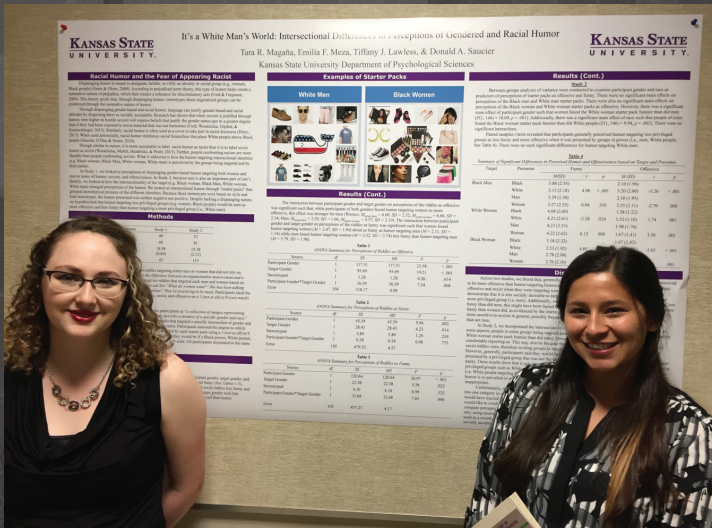
Lesly R. Krome, Ph.D., 2016, became an assistant professor of psychology last fall at Southeast Missouri State University. She teaches undergraduate psychology courses and serves as a primary faculty member for the newly launched Master of Arts in Industrial/Organizational Psychology Program. The research lab Lesly began is investigating the influence of social media variation on recruitment method utility. Lesly recently presented at the American Educational Research Association conference in New York and married Moses Guerrero last April.

John Smyers, M.S., 2016, is a senior test analyst at the Cerner Corporation. He and his wife, Chelsie, bought a house in Blue Springs, Missouri, in June 2016 and adopted Duke, a Great Dane. Chelsie is now a fully licensed physician in her last year of residency at Truman Medical Centers in Kansas City. She plans to join a family practice clinic after residency. John has completed 15 half-marathons and one full marathon in the last two years, as well as vacation races in Rocky Mountain National Park and Chicago.

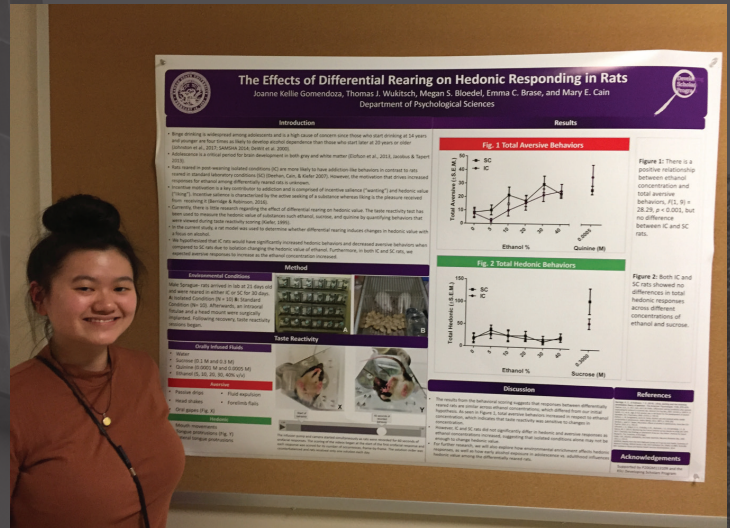


John Smyers and his wife, Chelsie, moving up in the world.

More examples of student research at the Undergraduate Research Convocation



Tara Magana and Emilia Meza presented "It's a White Man's World: Intersectional Differences in Perceptions of Gendered and Racial Humor."



Joanne Kellie Gomendoza, a participant in the Developing Scholars Program, presented "The Effects of Differential Rearing on Hedonic Responding in Rats."

Contact Us

Psytalk editor: Laura Brannon

To add your email address to the rapid news notification list, send your address to psych@k-state.edu.

To send us news for inclusion in next year's newsletter, please write, email — lbrannon@k-state.edu — or fax 785-532-5401 us and tell us what you are doing. Feel free to include professional and/or personal information, whatever you think would be of interest to fellow alums. You may also send photos, preferably digital, for possible use.

This newsletter is also distributed to potential undergraduate and graduate students in order to show them what is going on in the department. Please continue to send us information about what you are currently doing even if the update doesn't indicate a change from your previous status. The ongoing successes of our graduates are one of the biggest selling/bragging points for the department.

Name _____
 Graduation year and degree _____
 Address _____

 Email _____
 Would you like us to print your email address in next year's newsletter?
 Yes _____ No _____
 News from you: _____

Send to: Psytalk Newsletter
 Laura Brannon
 Department of Psychology
 Kansas State University, 492 Bluemont Hall
 1114 Mid-Campus Drive, North
 Manhattan KS 66506-5302 USA
 Fax: 785-532-5401
 Email: lbrannon@k-state.edu

KANSAS STATE
UNIVERSITY

Department of
Psychological Sciences

492 Bluemont Hall
1114 Mid-Campus Drive, North
Manhattan, KS 66506-5302

Nonprofit Organization
U.S. POSTAGE
PAID
Permit #525
Manhattan, KS 66502