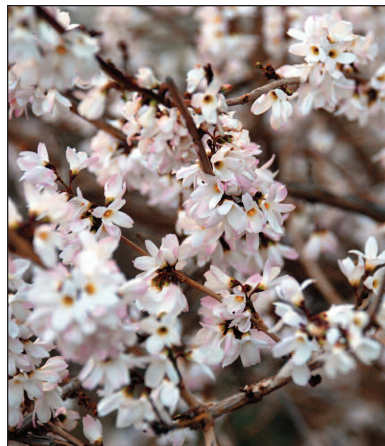




Look for photos throughout this newsletter of the many spring flowers at The Gardens.

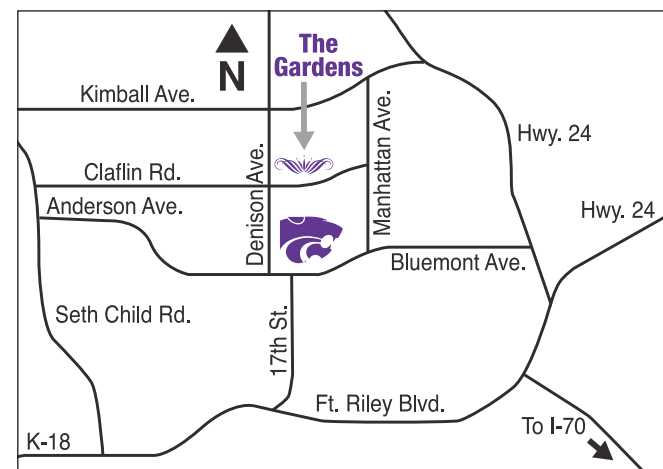


Flower crab tree



Spring-blooming flowers throughout The Gardens include (clockwise from top left): white forsythia, crocus, chokeberry and lilac.

The Kansas State University Gardens are designed as a lifelong learning laboratory to encourage environmental involvement with the university community and the public. An ever-changing display of plants provides an opportunity for education, research and conservation.



The Kansas State University Gardens are located on the campus of Kansas State University at 1500 Denison Avenue, north of Claflin Road. Quinlan Visitor's Center is part of the historic Glenn H. Beck Dairy Barn.

[www.k-state.edu/gardens](http://www.k-state.edu/gardens)

Like us on Facebook:

[www.facebook.com/kstate.gardens](http://www.facebook.com/kstate.gardens)

## Student Employees of The Gardens

Student employees have been hard at work this spring semester.

Joseph Prud'homme III is originally from Fort Worth, Texas. His major is Wildlife & Outdoor Enterprise Manage-

ment and he intends to pursue a career in the hunting/ fishing industry. Growing up Joe helped his mom work in the flower beds at home. Joe has worked for Scott McElwain at The Gardens for the past two years, enjoying the opportunity to learn and work outside.



Four of The Gardens student employees this spring semester: Mary Conner, Caitlynn McVey, Joe Prud'homme and Ben Petrie. Not pictured: Madison Culley.

ment and he intends to pursue a career in the hunting/ fishing industry. Growing up Joe helped his mom work in the flower beds at home. Joe has worked for Scott McElwain at The Gardens for the past two years, enjoying the opportunity to learn and work outside.

Ben Petrie is a sophomore from Fairway, Kansas. His major is in Wildlife and Outdoor Enterprise Management. Someday he hopes to use what he's learned to start a private land management company, specializing in native habitat restoration. Ben has worked at The Gardens since September of 2015 doing mainly landscaping jobs and tending to plants. This has been a great opportunity for him to make money to help pay for tuition and housing, but has also taught him many new skills. Ben also feels fortunate to work in a beautiful place such as The Gardens and be able to help improve it even further for others to enjoy.

Caitlynn McVey says that working in The Gardens as an intern has been an incredible experience. Helping to complete Phase II projects, working in all areas of The Gardens and maintaining the beds has allowed her to learn more about a wide variety of plants. She has taken

what she learned in the classroom and put it to use in the real world. Supervising the summer crew provided experience in responsibility, managing people and to deal with different situations. Running the crew helped her gain more confidence in herself and her decisions. She is thankful for the opportunity to learn and knows that she will benefit from all of it in the future.

Mary Conner is a freshman in Fruit and Vegetable Production at Kansas State originally from suburban Tampa, Florida. She began working in the gardens a few weeks after school began. Mary's father, was a landscape architect who would frequently experiment in their front yard with different plants. Although she wasn't necessarily especially interested as a young girl, she learned to love and appreciate the many different species that were always around. Mary has already learned so much from her short time here, so she can't wait to see what will come with spring!

Madison Culley from Lyndon, Kansas is a sophomore in horticulture. She has worked in greenhouses before, but never in landscape maintenance. Madi likes greenhouse production and landscape horticulture and also enjoys the science side of horticulture. She hopes that her work study at The Gardens will help her make her decision on a specialization.

## Save the Date of June 10 for the Annual Garden Party



Plans are currently underway for the 12th Annual Kansas State University Garden Party to be held June 10, 2016. The theme this year is "Songs in the Garden", featuring Western Swing Music by Robin Macy (owner of Bartlett Arboretum in Belle Plaine) and the Cherokee Maidens.

The committee promises another delightful event, complete with cocktails, heavy hors d'oeuvres, and an awesome silent auction. Proceeds from the Garden Party help fund the Kansas State University Gardens Internship Program.

We invite everyone to join us in two-stepping through The Gardens!

For ticket information, contact Anne Springer, at 785-532-7093 or email [spr@ksu.edu](mailto:spr@ksu.edu).

## Bus Trip Planned for April 12 Has Been Cancelled

The Friends of the Gardens regret to inform you that the spring bus trip scheduled for April 12 to Ward-Meade Park Botanical Garden in Topeka, and Arnold's Greenhouse in Le Roy has been cancelled.

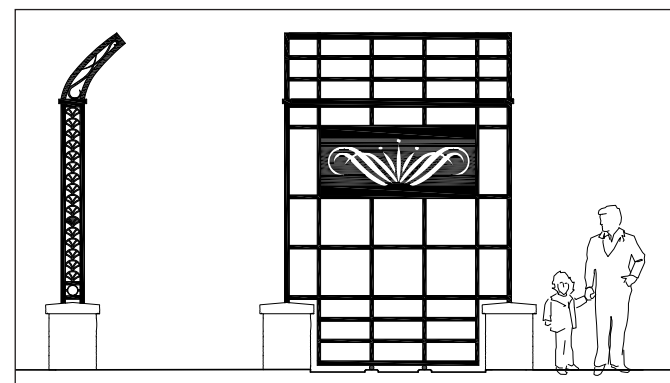
We hope to be able to schedule another fun trip soon.

## From the Director of The Gardens

We were able to make a lot of late (garden) season changes and additions to the conservatory garden because of our nice fall weather. We planted 140 peony plants in our new peony collection garden. The Lena and Herman Magnus Peony Collection was sponsored by Duane and Norma Benton, as a memorial to Norma's parents. While it may take 2-3 years before our peonies are fully established, we are very excited to have this new collection in the Gardens. A special thank you to the Bentons for helping us establish this beautiful collection.

Early this spring, we divided and transplanted the majority of our ornamental grass collection. This year, you will notice that most of our ornamental grasses can be found throughout the conservatory garden. We think this new design really compliments the setting and surrounding plant collections. We have also added five new benches to the conservatory garden so, we hope you'll stop, sit, relax and enjoy the view next time you're in the Gardens.

This spring we will also be adding two new arbors. These arbors will be both the north and south entry points to the future reflecting pool which will be located at the



north end of the conservatory garden. We anticipate the construction of these arbors being completed in April and hope to have them done for K-State Open House (Saturday, April 16). While construction of these arbors is very close to our Iris collection, we won't have to move any

plants and expect to have a beautiful Iris Day display (Mother's Day, Sunday, May 8) again this year.

Hope you enjoy all the improvements we've made in the Gardens this year...it wouldn't have been possible without your continued support. Thank you.

Scott McElwain  
Director of The Gardens



Pictured above are some of the many varieties of spring-blooming flowers at The Gardens.

## Kansas State University GARDENS

*Constructed and maintained  
by the Department of Horticulture,  
Forestry and Recreation Resources*

**Candice Shoemaker**  
Department Head

**Scott K. McElwain**  
KSU Gardens Director

**Emilie Fink**  
KSU Foundation  
Development Officer  
College of Agriculture  
(785) 532-7571

### Student Gardeners:

Mary Conner  
Jake Fischer  
Tim Kellams  
Caitlynn McVey  
Ben Petrie  
Joseph Prud'homme

### 2015-2016 Board of Directors:

Cheryl Yunk, President  
Deloris Berland  
Carol Bruckerhoff  
Nancy Cole  
Marcia Cooper  
Anne de Noble  
Nancy Farrar  
Janice Flanary  
Lori Levin  
Tim Lindemuth  
Jim Lindquist  
Jo Lyle  
Deanna Moeder  
Cindi Morris  
Barbara Pearson  
Ann Scott  
Sharon Snyder  
Polly Stoecklein  
Beth Unger  
Jane Wiltse-Pringle

Tyler Lutz, Student Member  
Ruth Ann Wefald, Honorary Member

**The Gardens**  
2021 Throckmorton  
Manhattan, KS 66506  
(785) 532-3271 phone  
(785) 532-3273 fax  
ksugardens@ksu.edu  
www.ksu.edu/gardens

## Holiday Decorating Was Luncheon Theme

"Holidays By Hildegard" was the theme of the Friends of the Gardens annual holiday luncheon, held Nov. 12, 2015, at the Manhattan Country Club. Hildegard Bemby, lead designer at Steve's Floral in Manhattan, shared holiday decorating ideas with the group.

Net proceeds from the Friends luncheons benefit The Gardens.



Nancy Cole (left) holds a lovely centerpiece she created for the Friends Holiday Luncheon. Hildegard Bemby (upper right), from Steve's Floral, presenting holiday ideas to the group. A small floral item (lower right) has multiple uses for table decorating.



## From the President of the Friends

Dear Friends of the Gardens—

The Gardens at Kansas State University are beginning to awaken after its winters sleep. The beauty of the gardens will soon be alive for all to see. Make plans to stop by The Gardens this spring, summer or fall to view the beautiful display. Plant markers are now located throughout the gardens to help you identify the plants of interest to you. Also, be sure to check out the new additions of plants and fixtures to The Gardens.

If you are planning a wedding, consider The Gardens for your venue. It is a lovely place to host weddings, receptions and special events. Please refer to our website for more information. All proceeds from special events support student labor.

I'd like to take this opportunity to THANK all of you who have contributed to The Gardens at Kansas State University. It is through your support and volunteer efforts that we are able to maintain and grow the Gardens. Watch for future growth and many more additions to The Gardens. If you'd like to "help grow The Gardens" please contact the Foundation at Kansas State University online or call Emilie Fink at the Kansas State University Foundation, 800-432-1578 toll free.

See you at The Gardens!

Cheryl Yunk, President  
Friends of the Gardens Board

Online membership registration now available:  
[www.ksu.edu/gardens](http://www.ksu.edu/gardens)

## Thank You to Our Gardens Volunteers

Thanks to office volunteers who have been working in The Gardens during the winter months. Marilyn Galle, Barbara Pearson, Deb Lippoldt, Sue White, Carol Bruckerhoff and Cindi Morris have been creating a plant database, archiving files, creating new wedding and self-guided tour brochures and doing inventories for the past six months.

Tour volunteers Chuck Marr and Marcia Cooper are gearing up for a busy spring and summer season.

Want to volunteer at The Gardens? Contact Cindi Morris at [cindim@ksu.edu](mailto:cindim@ksu.edu) for more information on working in the office or leading tours. Contact Barbara Pearson at [bpearson@ksu.edu](mailto:bpearson@ksu.edu) for more information on working outside in the garden beds. We appreciate your support!

## Conservatory Update

The Conservatory's new design has been included in the fund-raising campaign proposal and is currently being processed with the Kansas State University Foundation. This phase of the project is a very detailed and thorough process. We know that this is a project that all of our Friends are interested in and though we don't currently have a timeline to share, we will keep you informed on any new developments.

## Keep Up with Gardens Events; Subscribe to Our Newsletter

Please provide us with your email address if you are interested in receiving our bi-monthly newsletter. Send your information to [cindim@ksu.edu](mailto:cindim@ksu.edu).

