



Department of Horticulture,  
Forestry and Recreation Resources  
2021 Throckmorton Hall  
Manhattan, KS 66506-5506

**Additional Dates to Mark on Your Calendar:**

- K-State Open House / Plant Sale, April 24
- Iris Day, May 9
- Iris Sale, July 31
- Friends Poinsettia Sale, end of November or beginning of December; dates to be announced

**Upcoming Events**

**AWESOME ANNUALS FOR 2010**  
Mike DeRee, Ball Seed Company



Friday, March 5, 2010

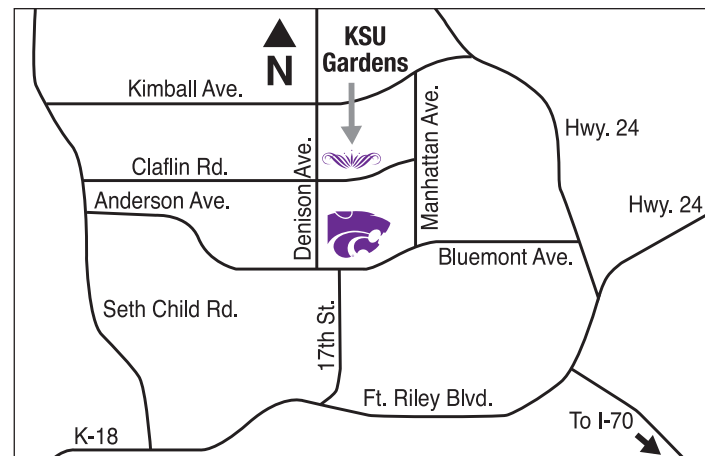
**6TH ANNUAL KSU GARDEN GALA**



Friday, June 4, 2010



The Kansas State University Gardens are designed as a lifelong learning laboratory to encourage environmental involvement with the university community and the public. An ever-changing display of plants provides an opportunity for education, research and conservation.



The Kansas State University Gardens are located on the campus of Kansas State University at 1500 Denison Avenue, north of Claflin Road. Quinlan Visitor Center is part of the historic Glenn H. Beck Dairy Barn.



**FRIENDS OF THE KSU GARDENS 2010 LUNCHEON SERIES BEGINS MARCH 5**

The 2010 Kansas State University Gardens Luncheon Series begins March 5 and will include speakers throughout the year on cultivation of annuals from seed, carefree maintenance of the hardy daylily and home holiday decorating with plants.

“Knowing how busy work weeks can be, this educational program is scaled to fit within the normal noon hour with a gourmet box lunch served during the gardening lessons,” said Judy Unruh, series coordinator for the K-State Gardens board of directors.

All the 2010 garden luncheon programs begin at 11:45 a.m. and end at 1 p.m. with an admission of \$25 each, payable upon registration. This includes lunch and garden program. Proceeds of the series support special projects at the K-State Gardens.

The series dates and locations include:

- Friday, March 5, “Awesome Annuals for 2010,” K-State Gardens



Visitors Center conference room. The presenter is Mike DeRee of Ball Seed Co., Wichita.

- Thursday, July 8, tour the daylily collection of Steve and Maureen Thien at the height of the



blooming season. The Thiens’ home, 3400 Windsor

Court, Manhattan, is designated an American Hemerocallis Society Display Garden with more than 600 daylily varieties.

- Thursday, Nov. 11, “Holiday Centerpieces and Table Decorations for Christmas,” at the K-State Gardens Visitors Center conference



room. The presenter is Bronwyn Douglas, co-owner of Kistner’s Flowers, Manhattan.

For more information, contact Unruh at 785-587-8432 or Judy\_Unruh@att.net. To place reservations contact or visit Anne Springer at the office of horticulture,

forestry and recreation resources at K-State, 2021 Throckmorton Hall, 8 a.m. to 1 p.m., Mondays, Tuesdays, Thursdays and Fridays, 785-532-1442 spr@k-state.edu.

**Awesome Annuals for 2010**

“Awesome Annuals for 2010” is the KSU Garden Luncheon Series topic for March 5. The presenter is Mike DeRee, a sales representative for Ball Seed Company. He lives in Wichita and works in Nebraska and Missouri, as well as Kansas. Mike grew up in his family’s greenhouse business in Wichita and has been in the horticulture business his entire career. Mike believes the wonder of growing and gardening connects us to the grandeur of nature, and also to each other, making the human experience more fulfilling, more complete.

Ball Seed Company is a subsidiary company of Ball Horticultural Company, a family owned and privately held company, and a leader in breeding plants for greenhouse growers on every continent. With production and breeding companies in all parts of the world, Ball Horticultural’s credo is to “create excitement in the world of flowers.”

Mike’s presentation last year was enjoyed by attendees so much that he was asked to come back again this year!

**A Special Thank You To You, Our Friend**

Thank you for sending in your recent membership renewal. If you are a new Friend to the Gardens we would like to welcome you and thank you for joining us in our efforts to support the KSU Gardens. We are always looking for ways to reach new members so, be sure to invite one of your friends to become one of ours. Thanks again, and may your 2010 Garden be your sanctuary.

**Come see us at the 2010 Manhattan Area Garden Show**

# Dayton Scholarship Recipients

The Dayton Family has supported the KSU Gardens project in many ways over the years. Several teak garden benches and chairs, sculpture



Arthur and LaVonia Dayton at a sculpture dedication in 2001.

such as the native bird collection in the adaptive/native plant garden and "Serenity" in the butterfly garden have all been sponsored by the Dayton family. Another area the Daytons have chosen to support the KSU Gardens and K-State students is through the Art and Artie Dayton Garden Scholarship. This scholarship was established to recognize exceptional



numerous horticulture club activities and have proven they possess a tremendous work ethic.

Congratulations to Anna, Bridget and Nilo. The Art and Artie Dayton Garden Scholarship is an award that they are well deserving of.

On behalf of the KSU Gardens and our horticulture students, I would like to take this opportunity to thank the Dayton Family for their generosity and continued support.

— Scott McElwain, Director, KSU Gardens



Bridget Baker



Nilo Fanska



Anna Rhoades

horticulture students who work in the KSU Gardens.

This year's scholarship recipients are Bridget Baker, Nilo Fanska and Anna Rhoades. These three are outstanding students, leaders in

## Kansas State University GARDENS

Constructed and maintained by the Department of Horticulture, Forestry and Recreation Resources

**Stuart Warren**  
Department Head

**Scott K. McElwain**  
KSU Gardens Director

**Thomas D. Warner**  
Professor and Projects Director

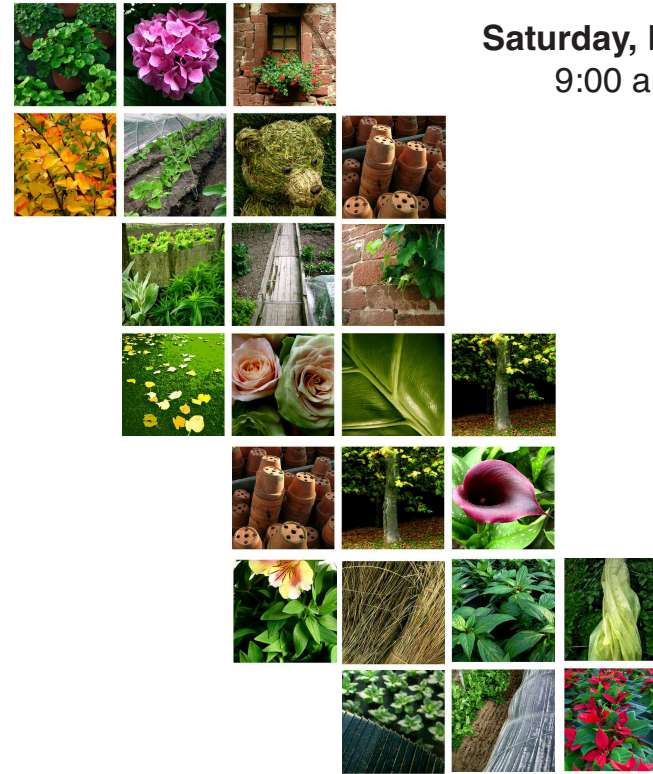
**Kim Schirer**  
KSU Foundation  
Director of Development  
College of Agriculture  
(800) 432-1578

**Student Gardeners:**  
Bridget Baker  
Nilo Fanska  
Caleb Jones  
Neil Lednický  
Anna Rhoades  
Zach Swim

**Board of Directors:**  
Jim Lindquist, President  
Deloris Berland  
Kris Boone  
Nancy Farrar  
Janice Flanary  
Marilyn Galle  
Karen Hibbard  
Lori Levin  
Tim Lindemuth  
Jo Lyle  
Marti Meek  
Liz Ramsey  
Mitzi Richards  
Jim Roush  
Ann Scott  
Sharon Snyder  
Polly Stoecklein  
Judy Unruh  
Cheryl Yunk  
**Honorary Board Member:**  
Ruth Ann Wefald

**KSU Gardens**  
2021 Throckmorton  
Manhattan, KS 66506  
(785) 532-3271 phone  
(785) 532-3273 fax  
ksugardens@ksu.edu  
www.ksu.edu/gardens

# 2010 Manhattan Area Garden Show



**Saturday, February 27**  
9:00 am – 5:00 pm

**Sunday, February 28**  
Noon – 4:00 pm

Pottorf Hall, CiCo Park  
(Kimball & Avery Avenues)

Free Admission

Hourly Seminars

Silent Auction

Door Prizes

**KSTATE** Research and Extension  
Kansas State University

(785) 537-6350  
www.riley.ksu.edu

## Grow with the Gardens

### Become a Friend and/or Volunteer at the KSU Gardens!

Volunteers provide essential assistance that is greatly appreciated. If you are interested in volunteering in any of the following capacities, please return this form indicating your interests in serving.

Name \_\_\_\_\_

Address \_\_\_\_\_

City, State, Zip \_\_\_\_\_

Phone \_\_\_\_\_ E-mail \_\_\_\_\_

#### Membership:

I would like to support the KSU Gardens at the following level:

- Patron (\$25 to \$49)
- Contributor (\$50 to \$99)
- Supporter (\$100 to \$249)
- Benefactor (\$250 to \$499)
- Builders Circle (\$500 to \$999)
- Distinguished Friend (\$1,000 and up)

Gift membership provided by: \_\_\_\_\_

#### Volunteer:

I would like to assist the KSU Gardens in the following ways:

- Gardening
- Tour Guide
- Information Center Volunteer
- Gift Shop Volunteer
- Educational Programs
- Special Events
- Publication Production
- Other: \_\_\_\_\_

#### Please return form to:

Friends of the KSU Gardens  
Department of Horticulture, Forestry and Recreation Resources  
2021 Throckmorton Hall  
Manhattan, KS 66506-5506

Friends of the KSU Gardens D25860

Online membership registration now available:  
www.ksu.edu/gardens

## Did You Know?

In 1877 Arnold Arboretum of Harvard University donated over 100 species of exotic trees and shrubs to be incorporated into the campus landscape. At its peak, between 1940 and 1960, the Kansas State University Gardens and Arboretum contained 4,000 specimens, representing 700 species of woody plants. An outdoor laboratory indeed!



Photo courtesy of K-State Archives