

Kansas State University
New Residence Hall and Dining Center

Program Comparison
 6-Jan-14

Function	Type	COMMUNITY SIZE				KSU ORIGINAL PROGRAM					SCHEMATIC DESIGN PROGRAM					
		Occ.	Prog NSF	Quan Units	Total Beds	Total SF	Occ.	Prog.NSF	Quan Units	Total Beds	Total SF	Occ.	Prog.NSF	Quan Units	Total Beds	Total SF
New Res Hall: Res. Community		5 fl above Ground level common														
Residential Spaces							Area Subtotal 55,750					Area Subtotal 55,260				
							46.0 # students/comm.					30.0 # students/comm.				
							10 # communities					15 # communities				
							2 # comm./floor					3 # comm./floor				
							5 # floors					5 # floors				
Traditional																
1 Traditional Single (RA Unit)	Single	1 1	400 148	1 2	1 2	400 296	1	400	10	10	4,000	1	148	30	30	4,440
2 Traditional Double	Double	2 2	230 242	22.5 14	45 28	5175 3388	2	230	225	450	51,750	2	242	210	420	50,820
subtotal							235 460					240 450				
Residential Bathrooms							Area Subtotal 10,400					Area Subtotal 4,530				
Shared Bathroom							260 40 10,400					55 45 2475				
ADA							62 1 62					62 15 930				
ADA Roll-in							75 1 75					75 15 1125				
Community Spaces							Area Subtotal 8,600					Area Subtotal 11,425				
Breakout Area							5 5 80 175 2 1 160 175 5 80 20 1,600					12 175 15 2,625				
Study Area							13 13 200 200 1 1 200 200 13 200 10 2,000					13 200 15 3,000				
Floor Lounge							67 1,000 0.5 500 67 1,000 5 5,000					50 750 5 3,750				
Kitchen												24 360 5 1,800				
Unisex Toilet												50 5 250				
Community Support Spaces							Area Subtotal 0					Area Subtotal 2,870				
Janitorial / Custodial Closets												1 120 5 600				
Trash/ Recycling Room												1 130 5 650				
Utility Room for Residents												1 85 5 425				
IT / Data Closet												1 60 5 300				
Power Closet / Electrical							3 1 3					3 15 45				
Elevator Lobby												170 5 850				
Residential Community Spaces							Total NSF: 74,750					Total NSF: 74,085				
New Residence Hall: Building Common Spaces							Ground Level below beds.					Ground Level below beds.				
Staff Residences							Area Total 2,600					Area Total 3,150				
Faculty-in-Residence		2 - Bedroom Apartment					5 1,000 1 2 1,000					12 1,200 1 2 1,200				
Residence Life Coordinator		2 - Bedroom Apartment					5 1,000 1 2 1,000					12 1,200 1 2 1,200				
Assistant Residence Life Coordinator		1 - Bedroom Apartment					3 600 1 1 600					8 750 1 1 750				
Building Commons							Area Total 4,400					Area Total 4,305				
Main Lounge							67 1,000 1 1,000					110 1,650 1 1,650				
Recreation Room							20 300 1 300					57 850 1 850				
Study Room							5 100 6 600					10 150 3 450				
Restrooms: Unisex												50 2 100				
Storage Space							4 1,200 1 1,200					(moves to old Kramer)				
Laundry							7 1,300 1 1,300					42 1,255 1 1,255				
Administration							Area Total 1,135					Area Total 700				
Front Desk							2 135 1 135					2 200 1 200				
Front Desk Storage							1 80 1 80					1 80 1 80				
Office							2 110 2 220					4 140 3 420				
Central Mailroom							30 600 1 600					(moves to old Kramer)				
Resident Life Program Storage							1 100 1 100					1 1 1				
Support Spaces							Area Total 920					Area Total 9,691				
Maintenance Shop/Office							2 560 1 560					5 475 1 475				
Housekeeping Break Room							8 120 1 120					3 345 1 345				
Housekeeping Storage							1 240 1 240					12 1,170 1 1,170				
Trash / Recycling												2 150 1 150				
Mech/Electrical / Plumbing												7,089				
Main Electrical Room												1,680				
Electrical Switches												220				
AHU Units in penthouse												717				
Steam - Equipment & heat Exchangers w/ pumps												3,750				
Fire Pump Room												260				
Penthouse(s) / Energy Recovery												0				
IT Head End Room / Data MDF room												3 280 1 280				
Penthouse Elevator Equipment Room												2 182 1 182				
Building Commons							Total NSF: 9,055					Total NSF: 17,846				
New Residence Hall SUMMARY																
Delivery Drive / Service							NSF: 83,805					NSF: 91,931				
Outdoor Gathering Area		1500					GRF: 1.50					GRF: 1.24				
Staff Apt Patio / Exterior Entrance		500					GSF: 125,708					GSF: 113,537				
Bicycle parking - # bikes		315					# Beds: 460					# Beds: 450				
Exterior Equipment		?					GSF / Bed: 273					GSF / Bed: 252				
New Parking - # stalls		0					Net to Gross Efficiency %: 66.67%					Net to Gross Efficiency %: 80.97%				
Trash / Compactor Recycling		?														

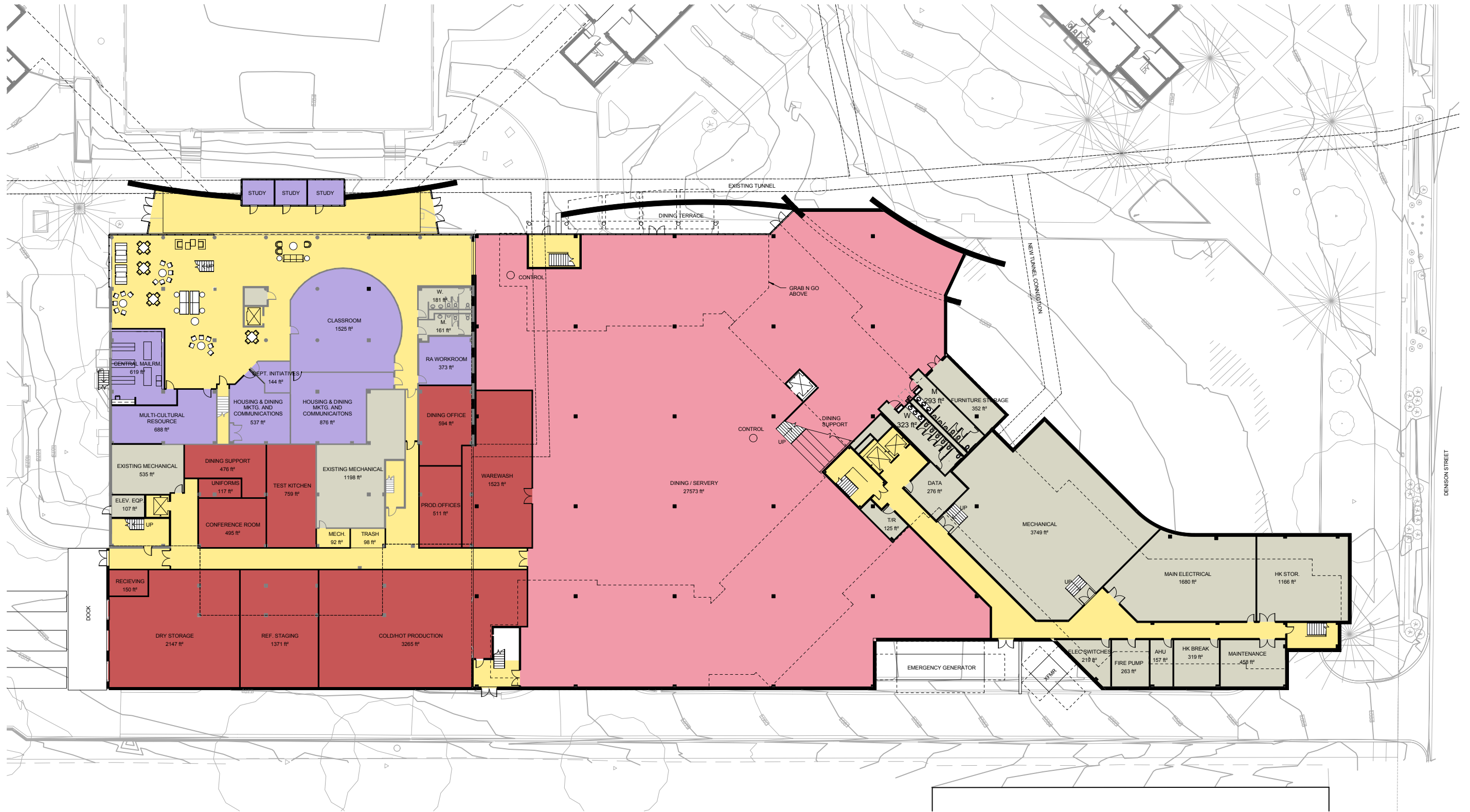
KANSAS STATE - NEW RES HALL & DINING CENTER

PROGRAM

1/16" = 1'-0"

01/07/14



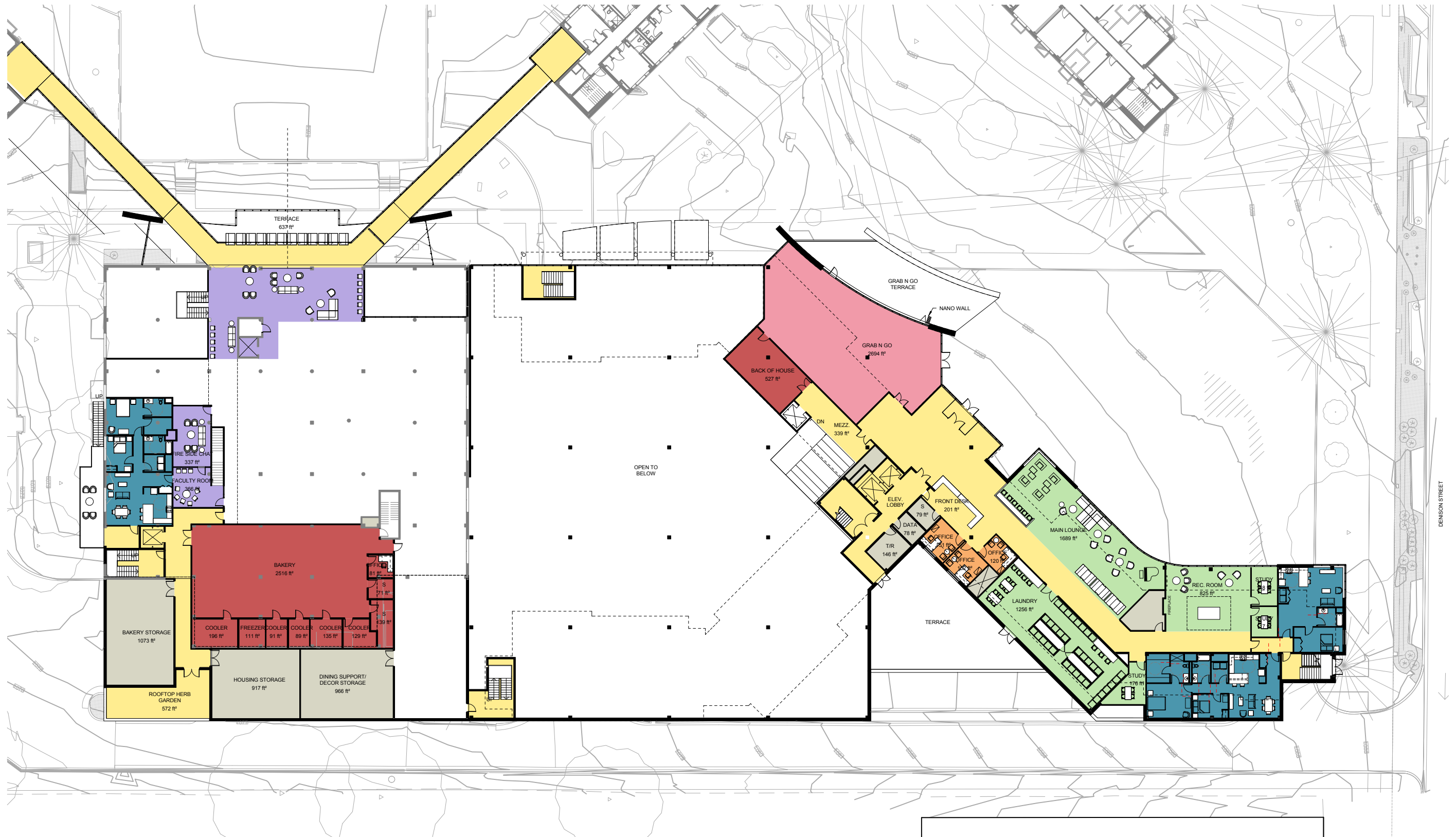


KANSAS STATE - NEW RES HALL & DINING CENTER

GROUND FLOOR PLAN

1/16" = 1'-0"

01/07/14

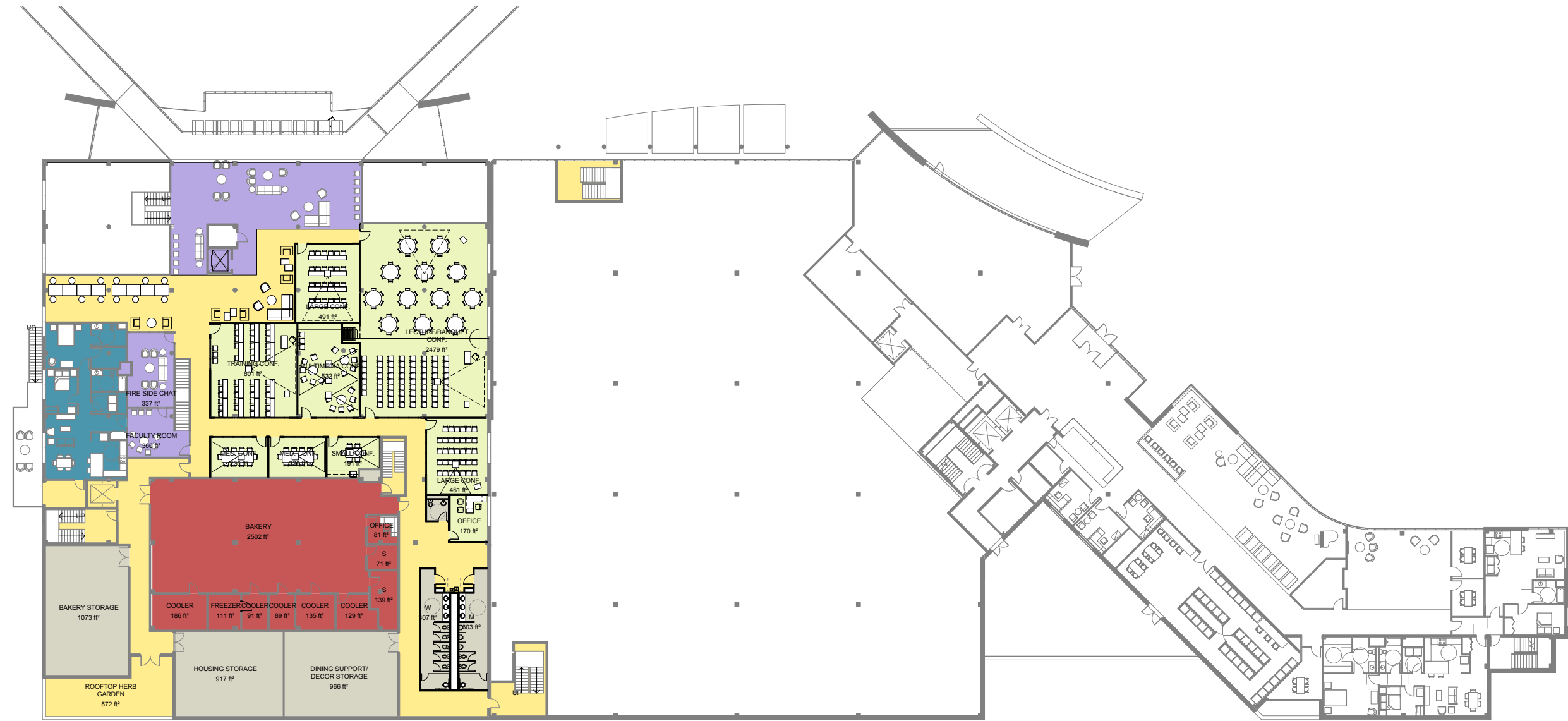


KANSAS STATE - NEW RES HALL & DINING CENTER

FIRST FLOOR PLAN

1/16" = 1'-0"

01/07/14



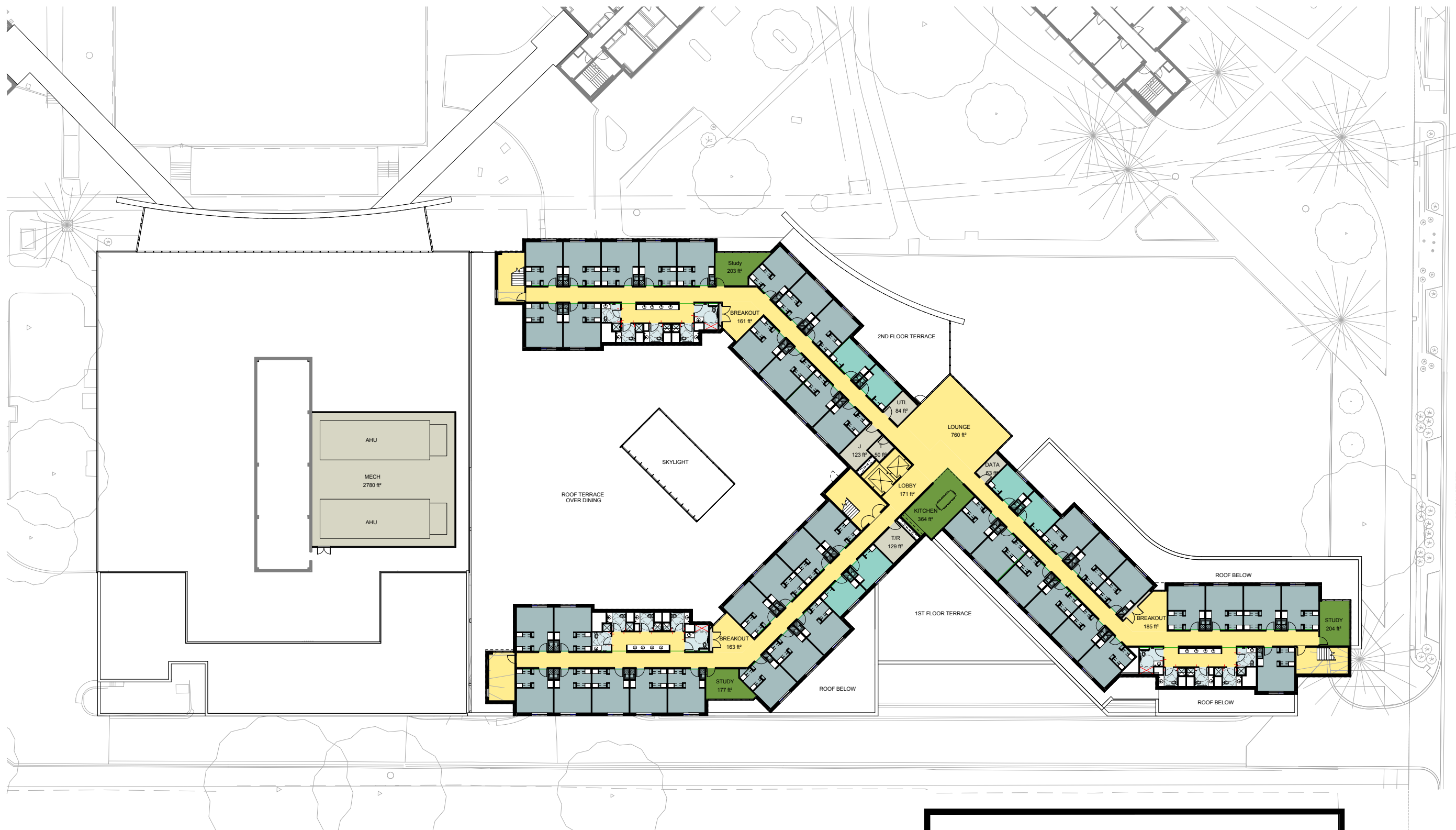
KANSAS STATE - NEW RES HALL & DINING CENTER

KRAMER 2ND FLOOR PLAN - FUTURE

1/16" = 1'-0"

01/07/14



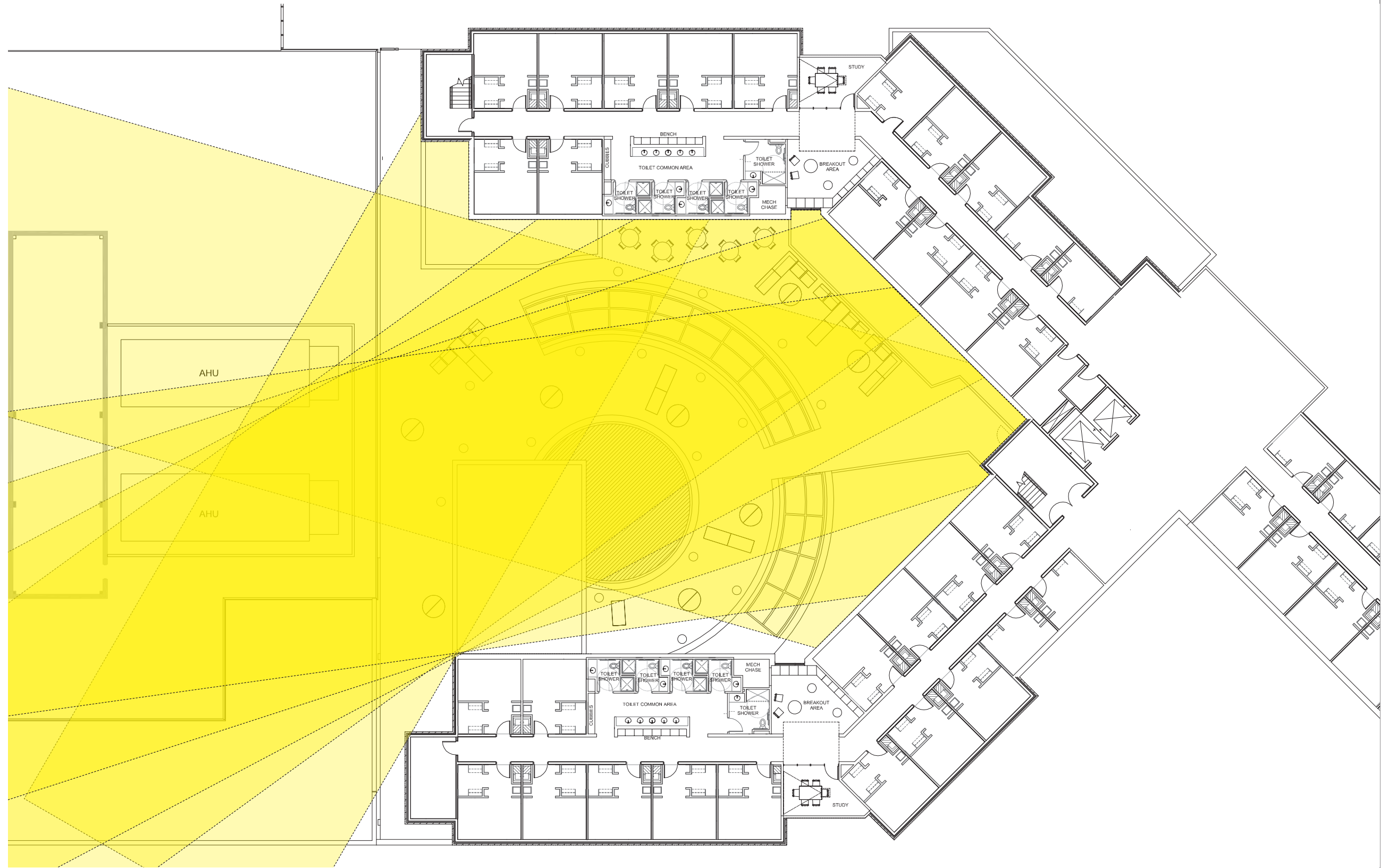


KANSAS STATE - NEW RES HALL & DINING CENTER

2ND FLOOR PLAN

1/16" = 1'-0"

01/07/14



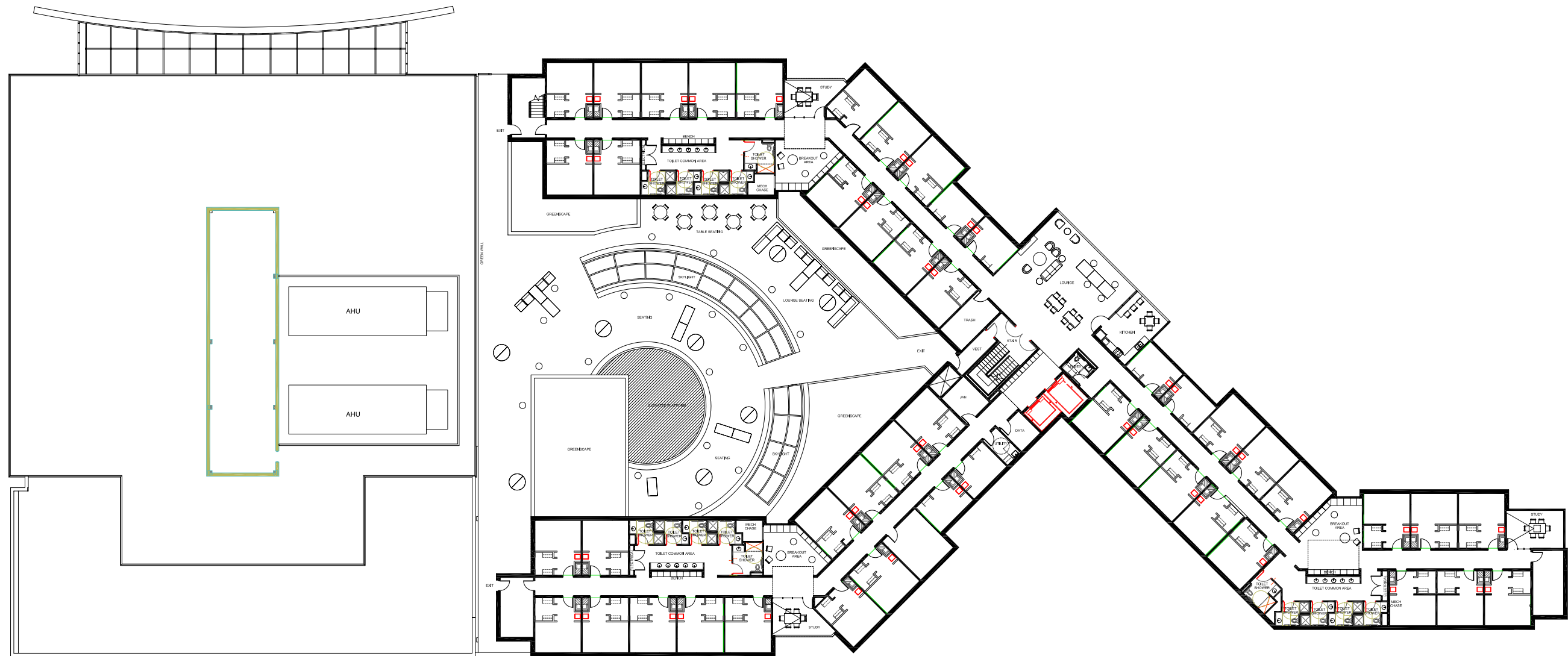
KANSAS STATE - NEW RES HALL & DINING CENTER

SUNLIGHT DIAGRAM

1/16" = 1'-0"

01/07/14



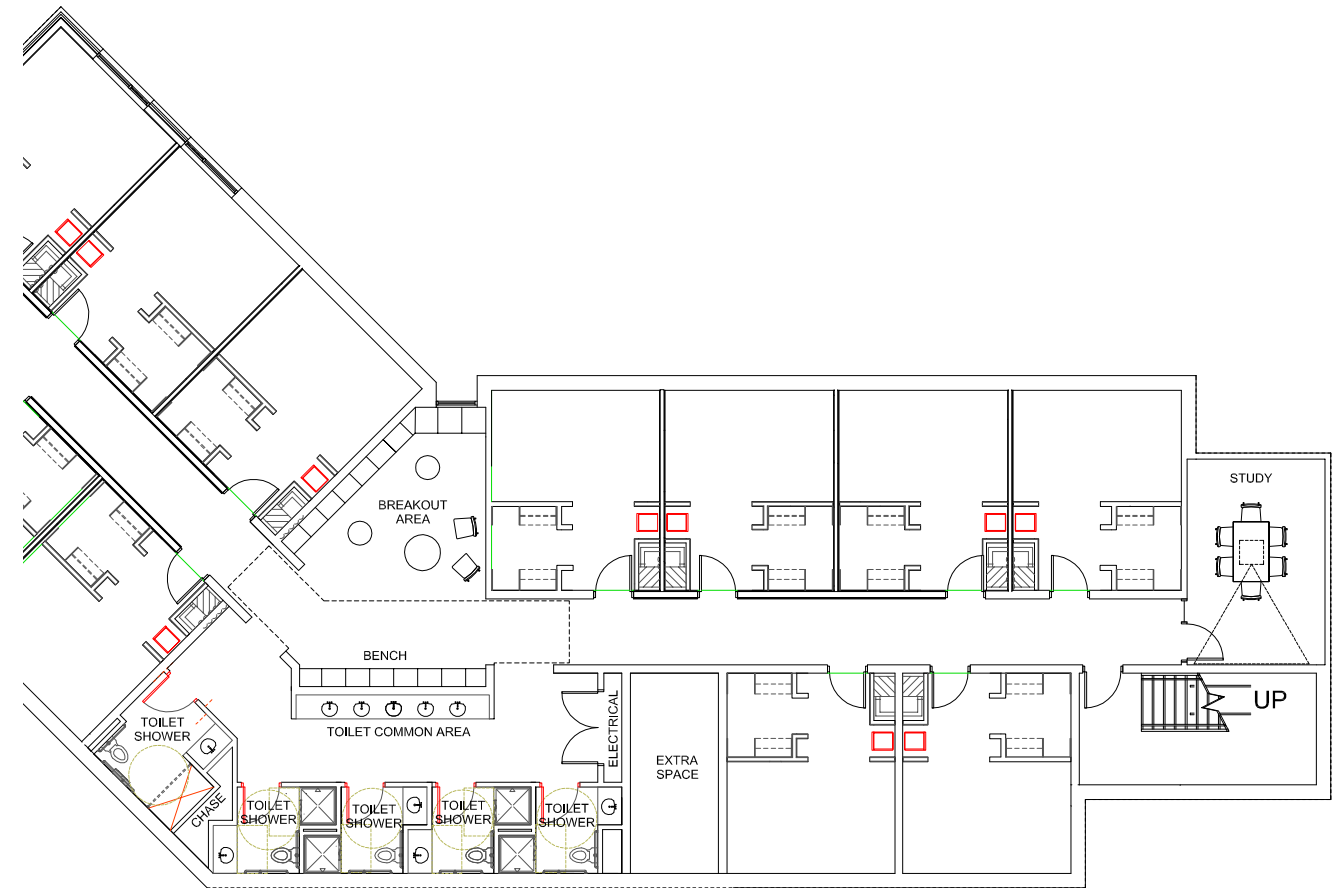
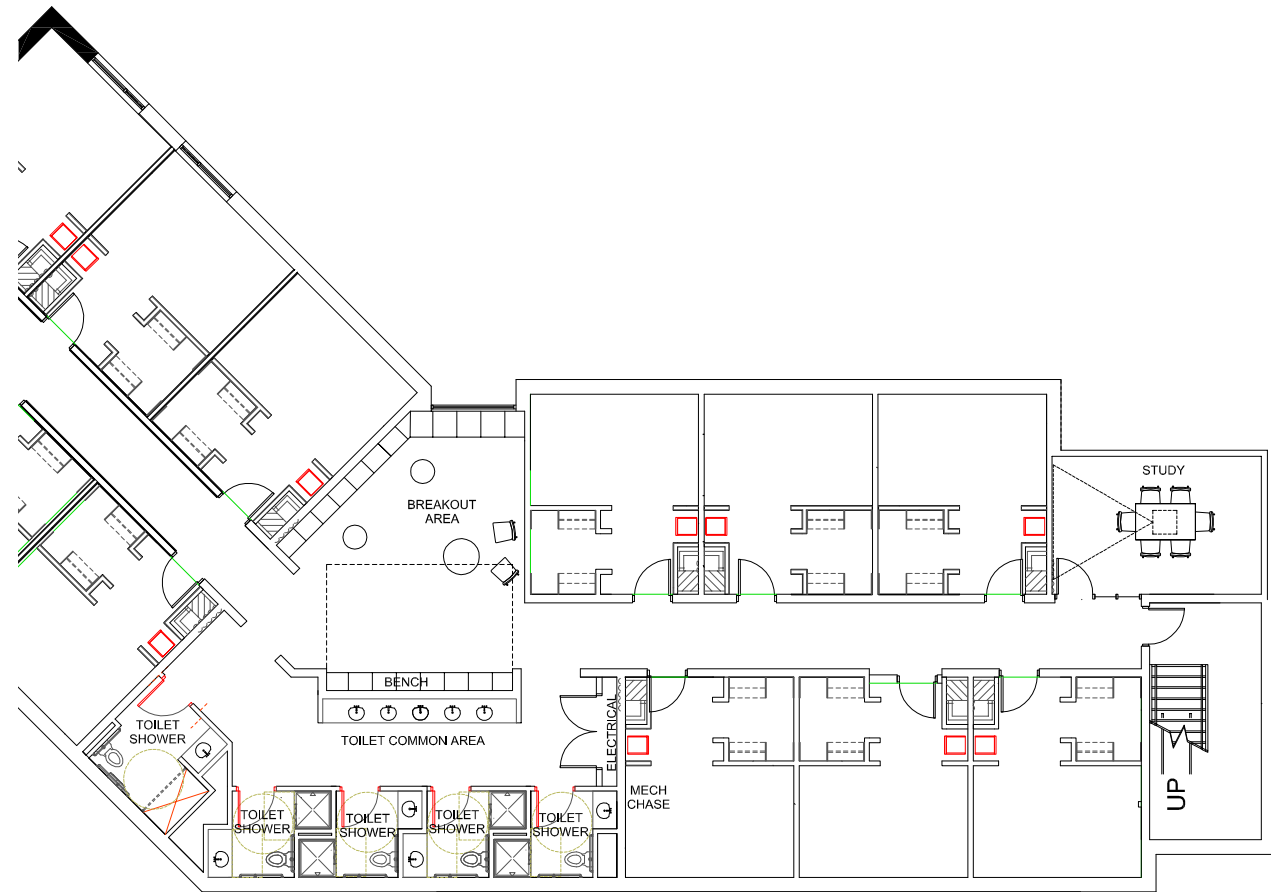


KANSAS STATE - NEW RES HALL & DINING CENTER

ALTERNATE UPPER PLAN AND ROOF TERRACE

1/16" = 1'-0"

01/07/14

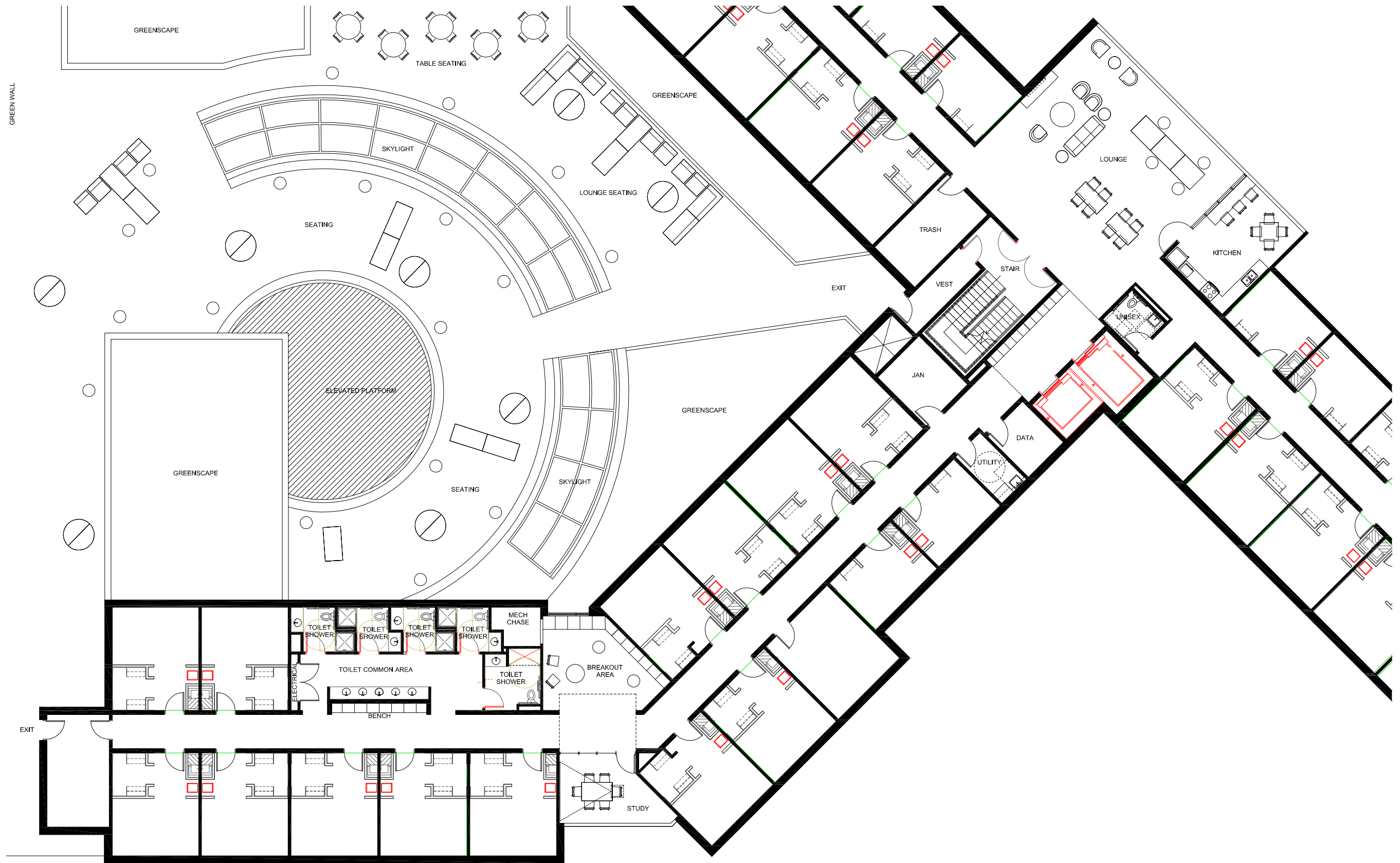


KANSAS STATE - NEW RES HALL & DINING CENTER

ALTERNATE BATHROOM – STAIR/STUDY ORIENTATION

1/16" = 1'-0"

01/07/14

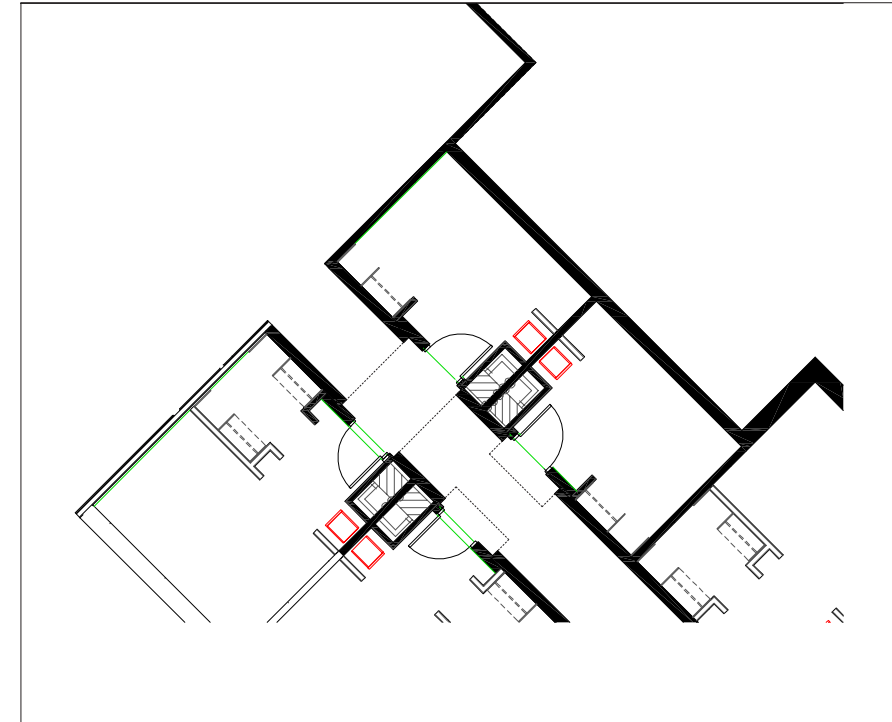
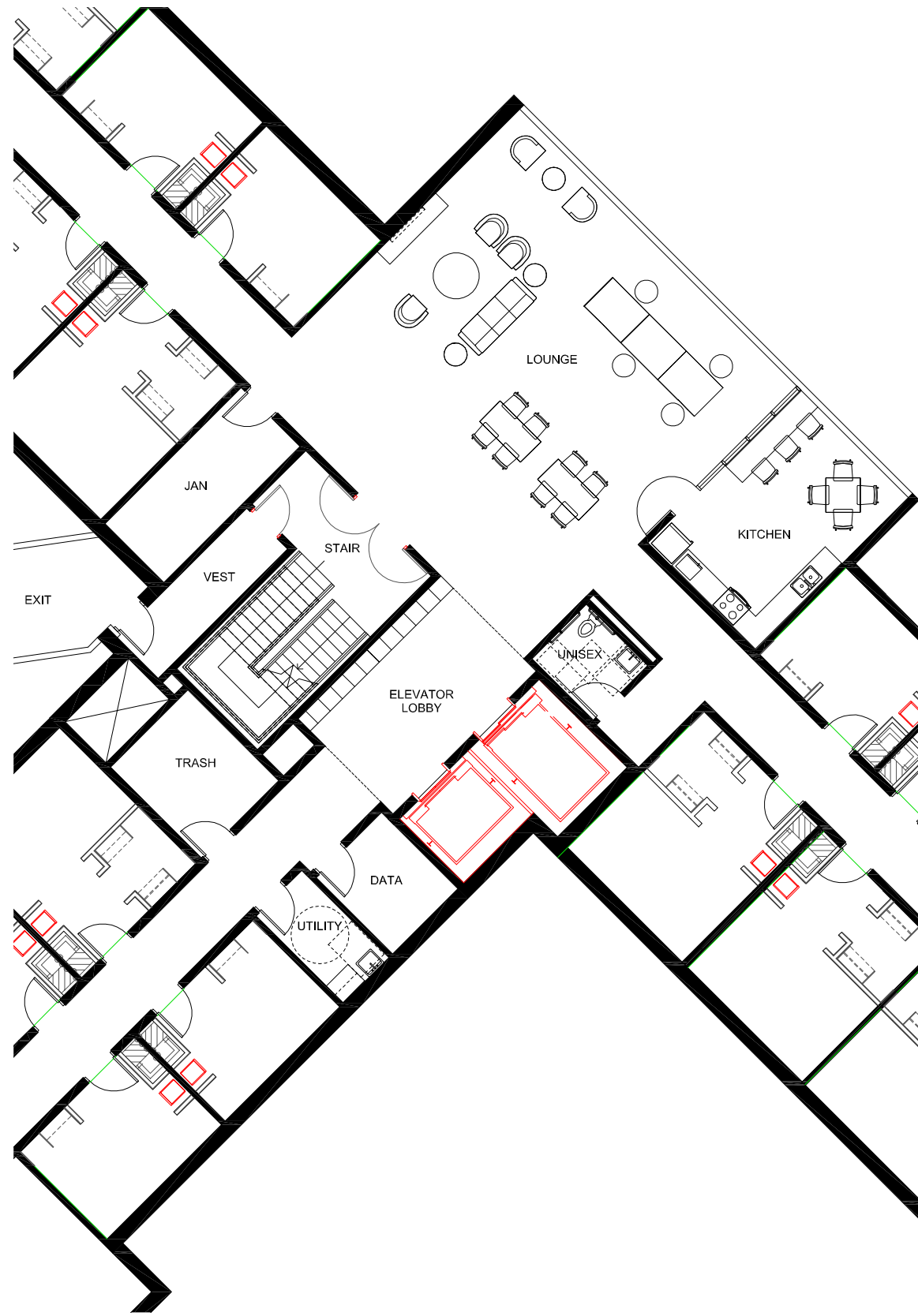


KANSAS STATE - NEW RES HALL & DINING CENTER

ALTERNATE BATHROOM

1/16" = 1'-0"

01/07/14



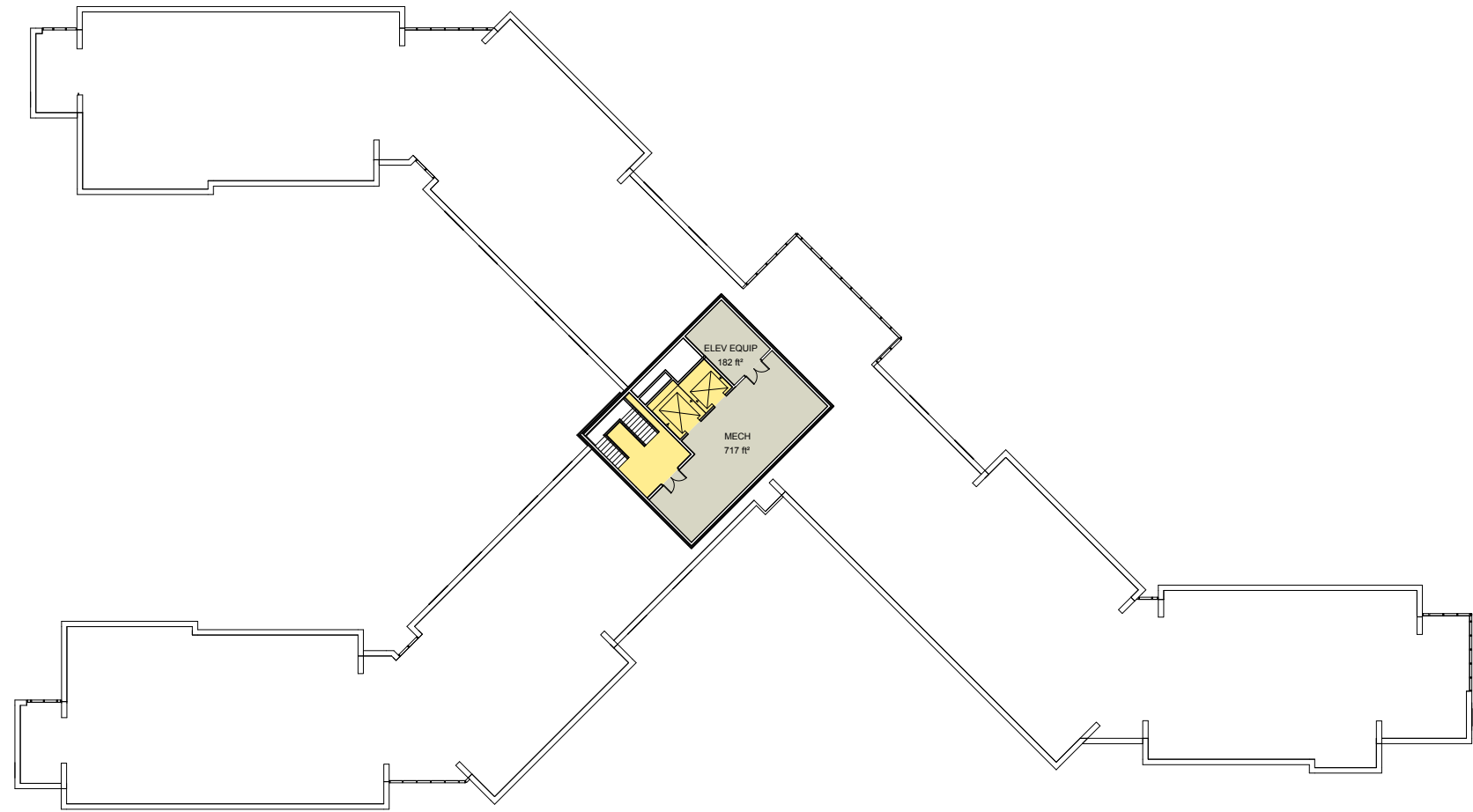
OPTIONAL UNIT DOOR ARTICULATION

KANSAS STATE - NEW RES HALL & DINING CENTER

ALTERNATE LOBBY - WIDER ELEV LOBBY

1/16" = 1'-0"

01/07/14



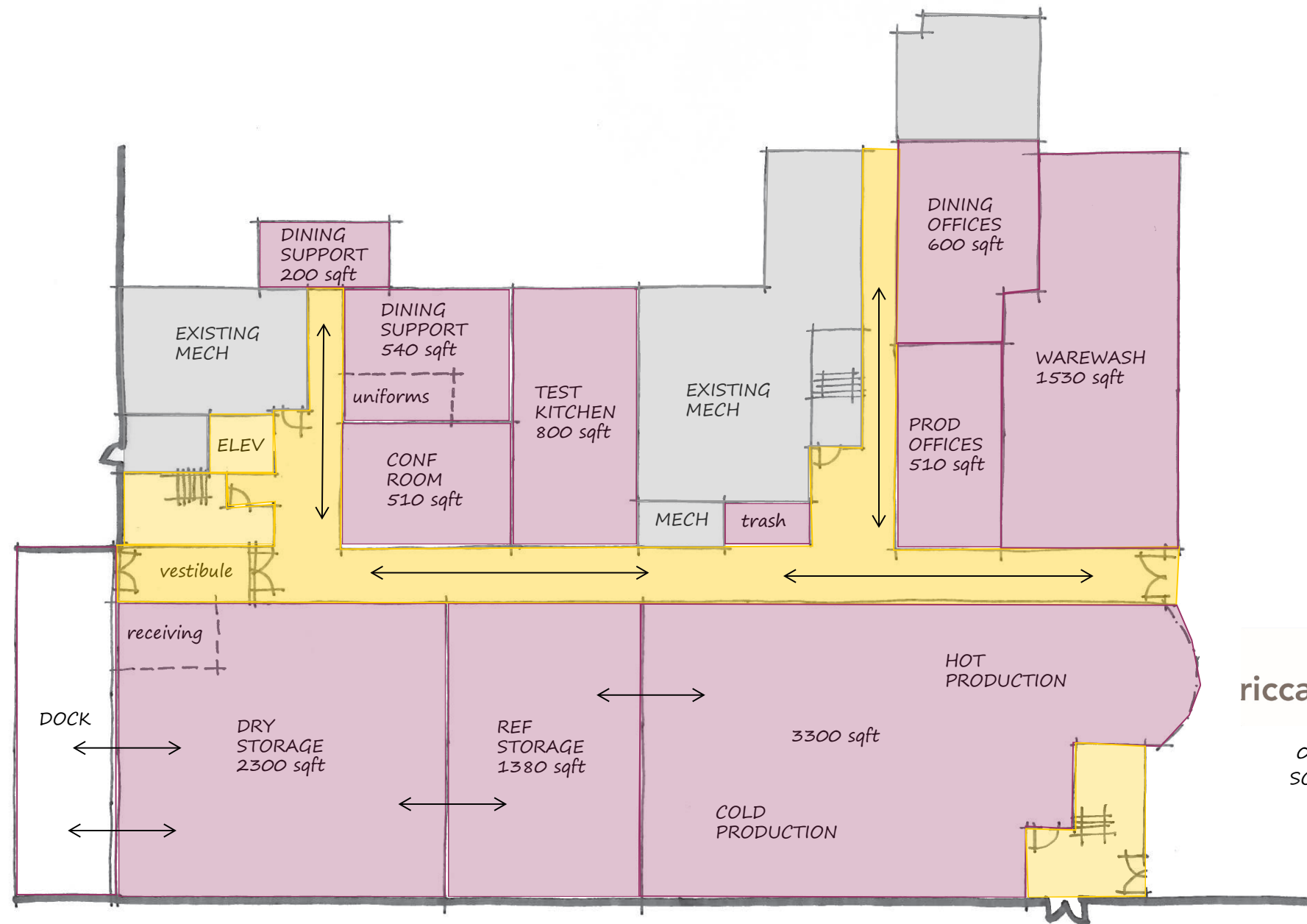
KANSAS STATE - NEW RES HALL & DINING CENTER

PENTHOUSE FLOOR PLAN

1/16" = 1'-0"

01/07/14





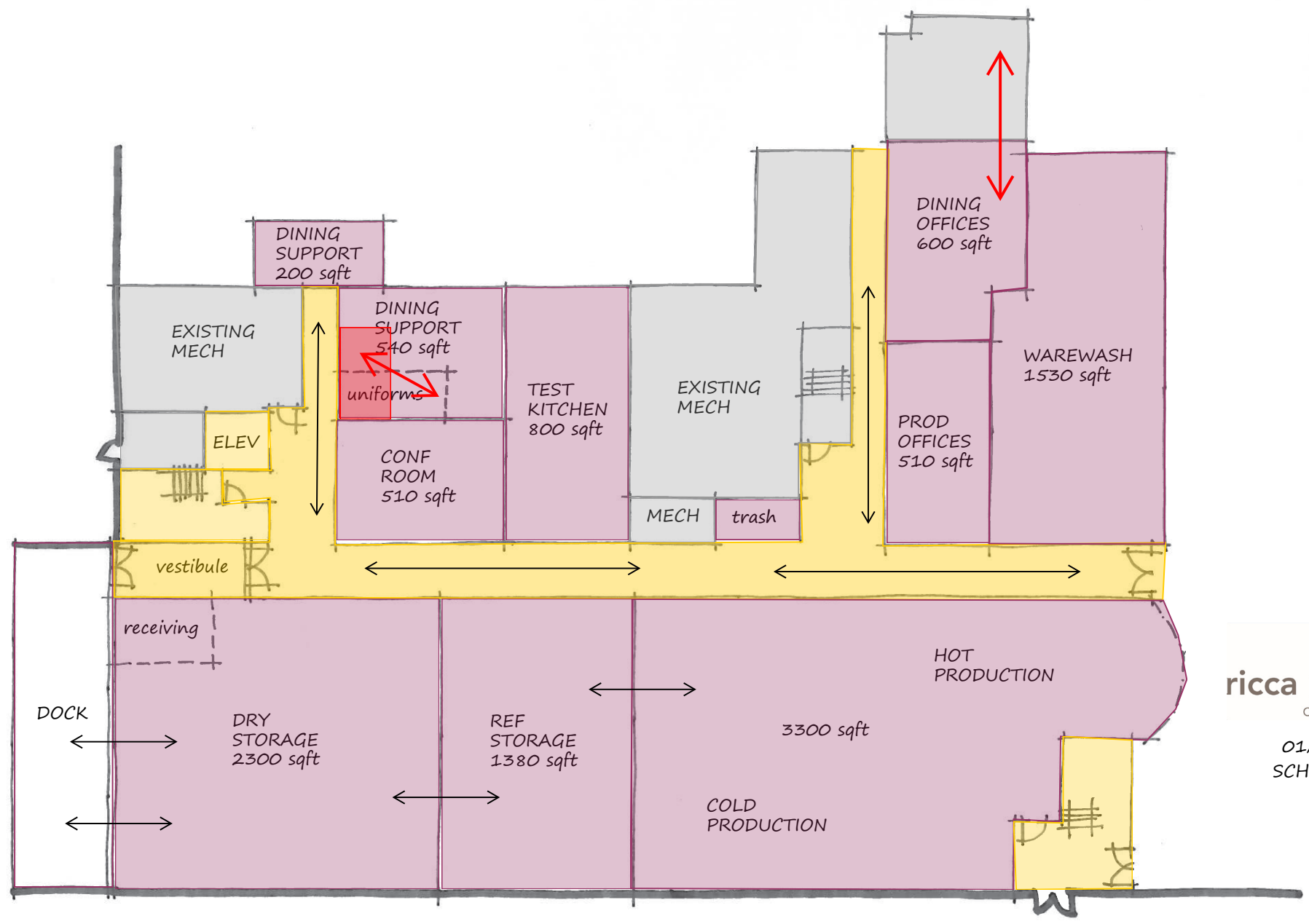

ricca newmark
 design
 01/07/2014
 SCHEMATIC #2

KANSAS STATE - NEW RES HALL & DINING CENTER

DINING

1/16" = 1'-0"

01/07/14




ricca newmark
 design
 01/07/2014
 SCHEMATIC #3

KANSAS STATE - NEW RES HALL & DINING CENTER

DINING

1/16" = 1'-0"

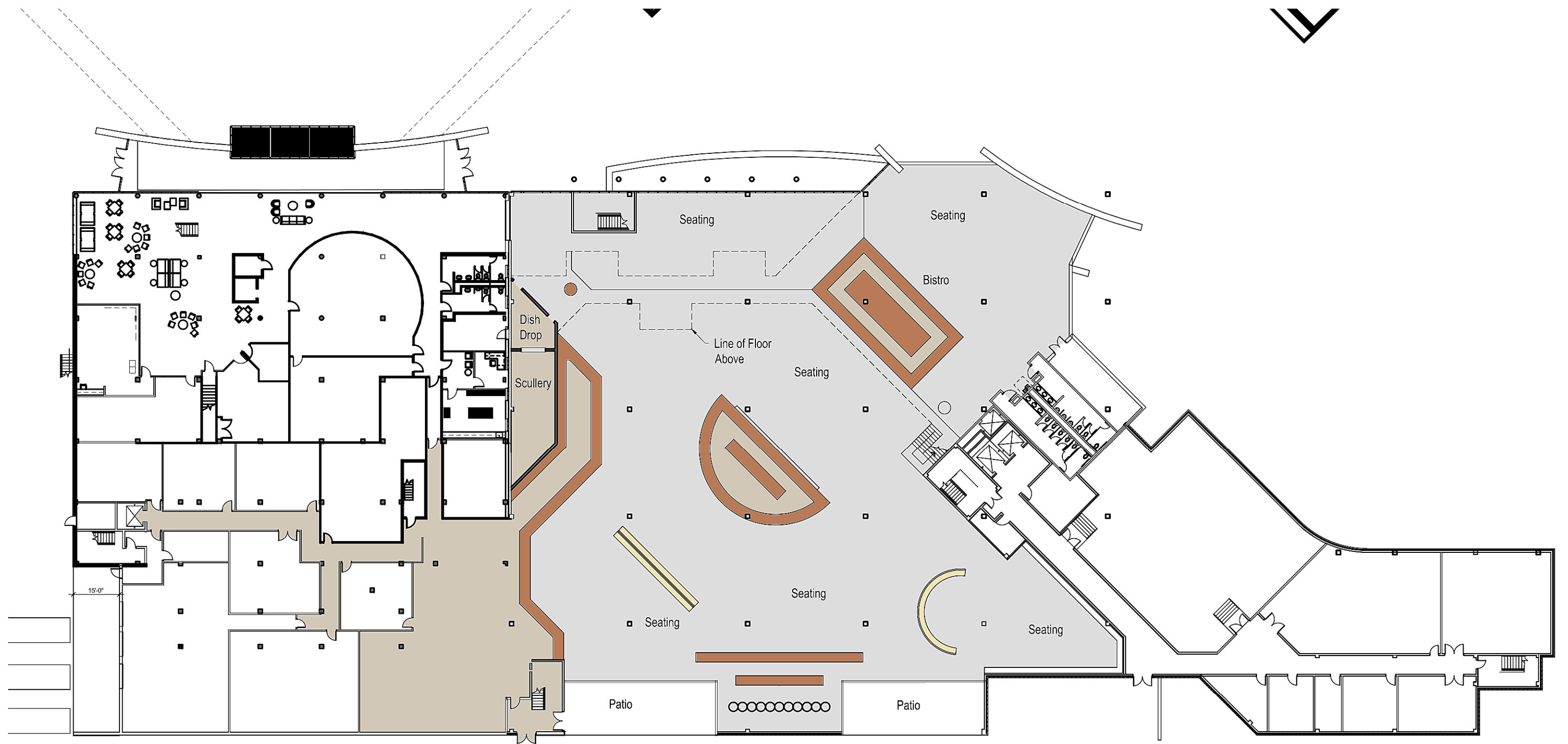
01/07/14

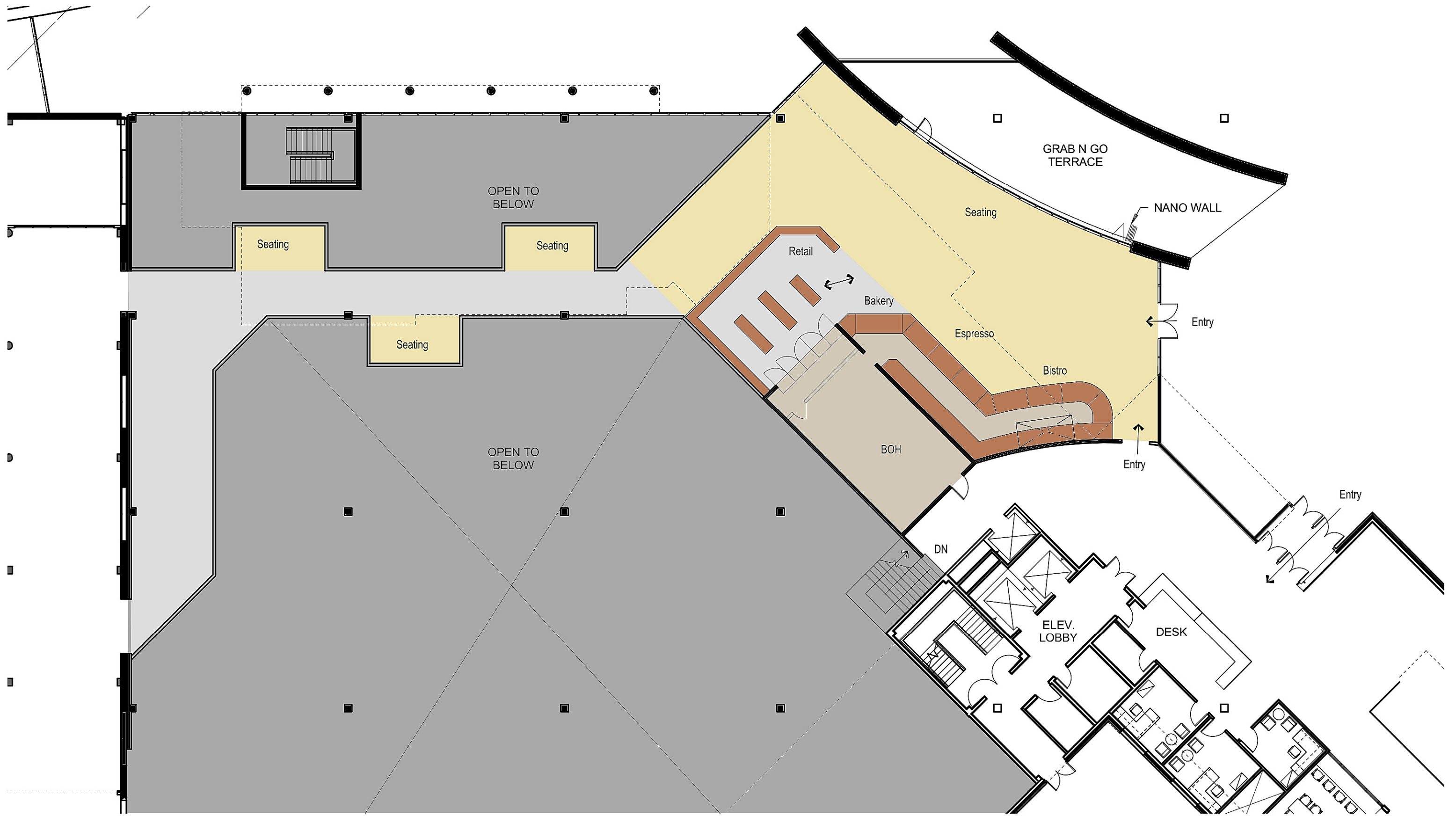


Kansas State University
Kramer Hall

Concept Plan - Ground Floor - All Up

Scale: 1/32" = 1'-0"





Kansas State University
Kramer Hall

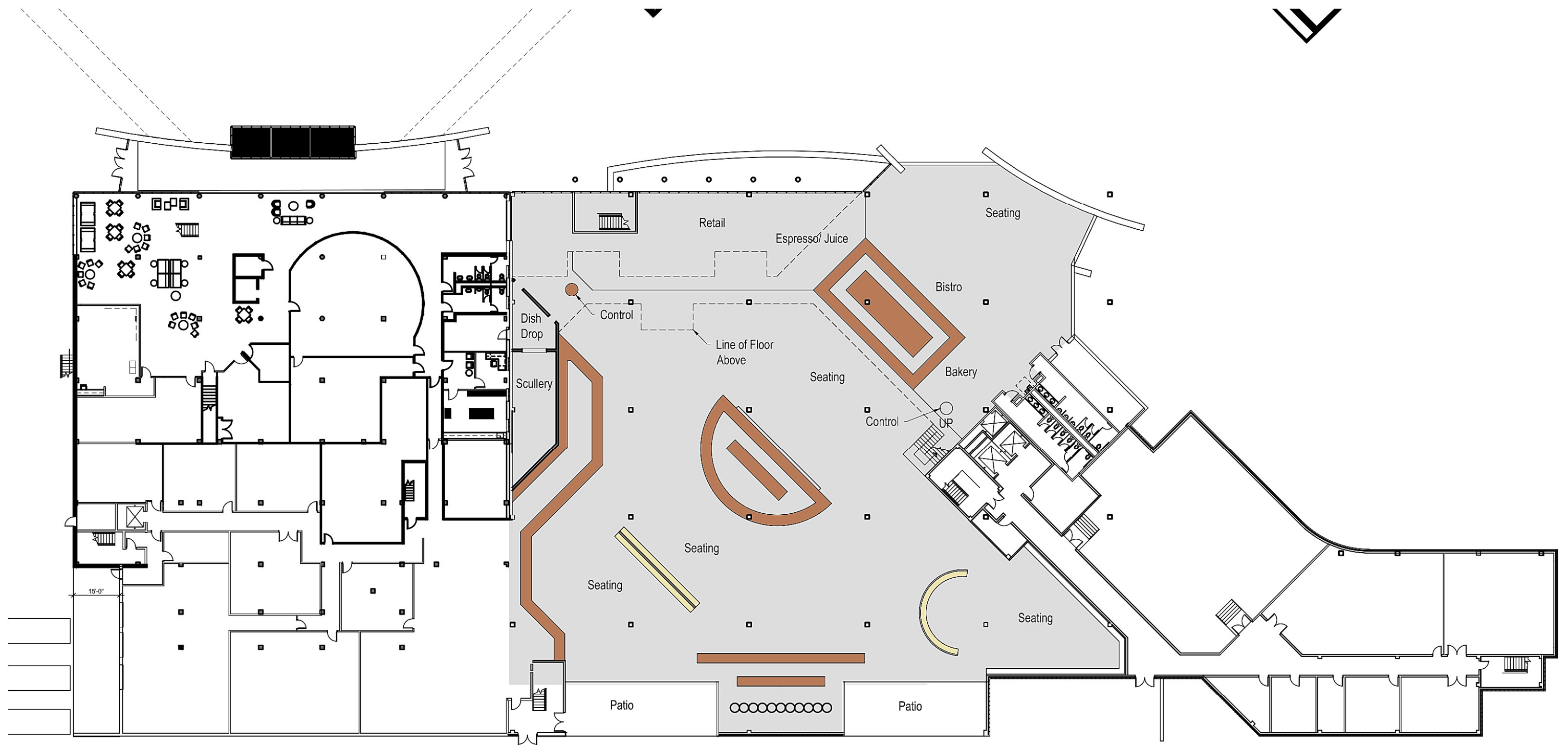
Concept Plan - First Floor
Scale: 1/16" = 1'-0"



Kansas State University
Kramer Hall

Concept Plan - First Floor - Bistro Below

Scale: 1/16" = 1'-0"



Kansas State University
Kramer Hall

Concept Plan - Ground Floor - All Below

Scale: 1/32" = 1'-0"

SITE PLAN

CONFLUENCE

LEGEND

- ① BIKE PARKING
- ② GRAB-N-GO OUTDOOR SEATING
- ③ NORTH DINING TERRACE
- ④ SOUTH DINING TERRACE
- ⑤ CENTRAL PLAZA
- ⑥ BASKETBALL COURT
- ⑦ PEDESTRIAN PROMENADE TO MAIN ENTRY
 - Site Furnishings
 - Lighting
 - Seat Walls
 - Decorative Paving
 - Landscape



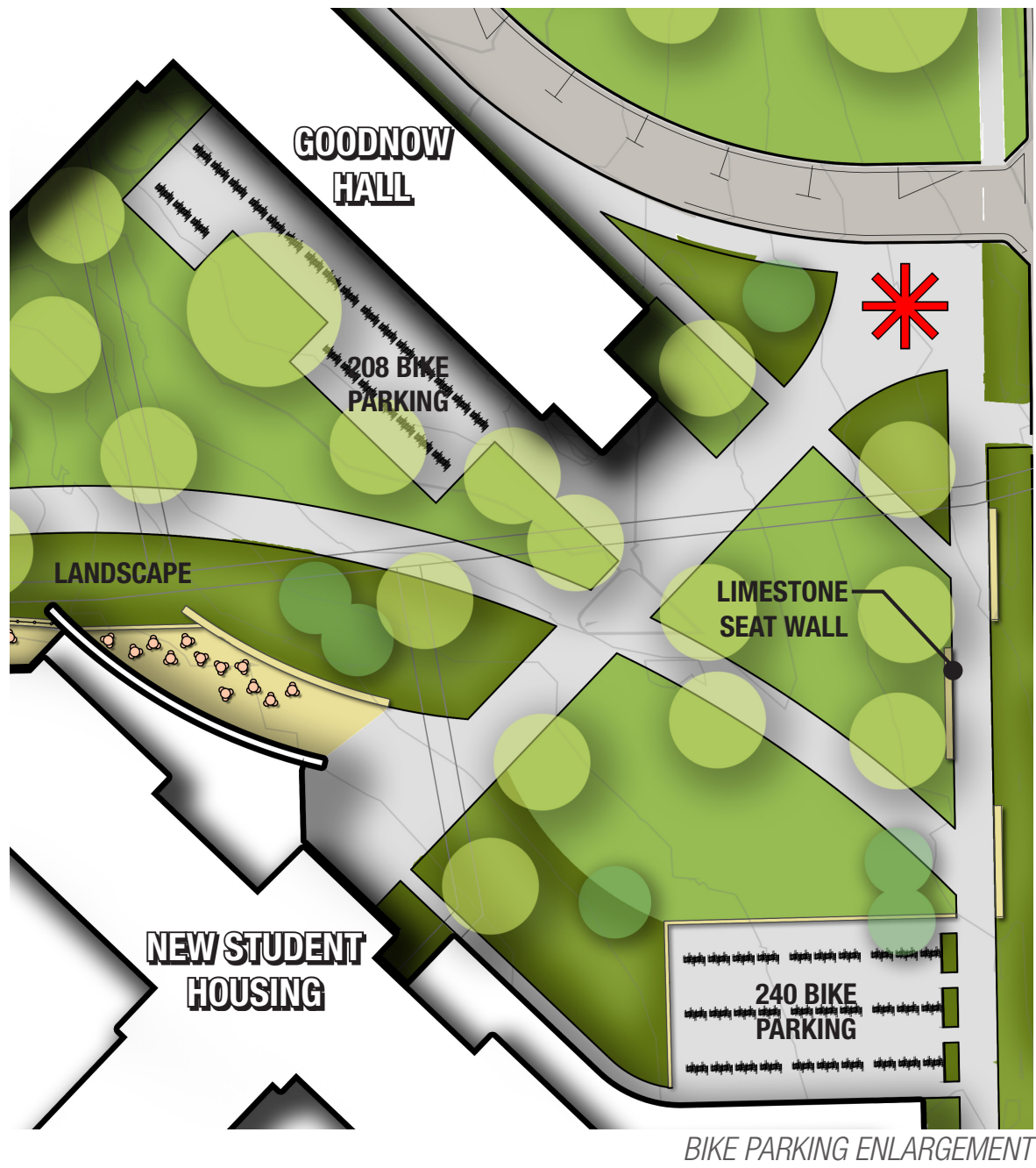
KANSAS STATE - NEW RES HALL & DINING CENTER

SITE

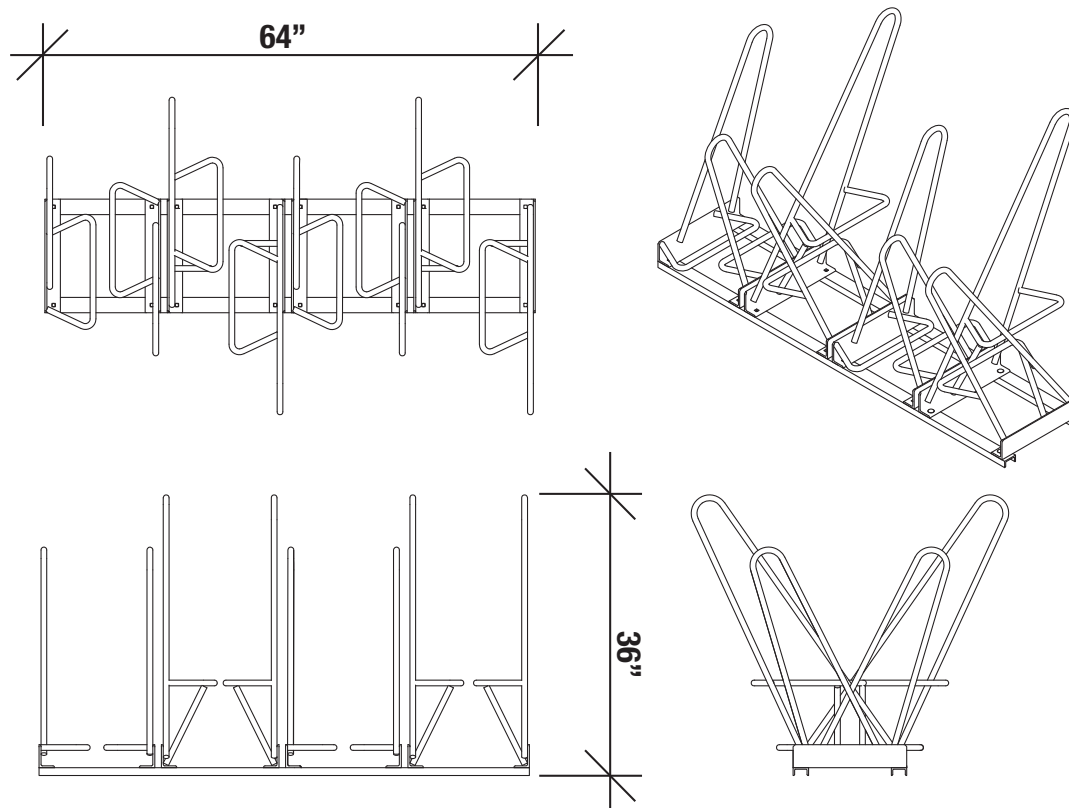
1/16" = 1'-0"

01/07/14

BIKE PARKING



CONFLUENCE



MADRAX BIKES: SHARK UP BIKE RACK, 8 BIKES, DOUBLE SIDED PARKING
 PRODUCT NUMBER : SHU-DBL-8

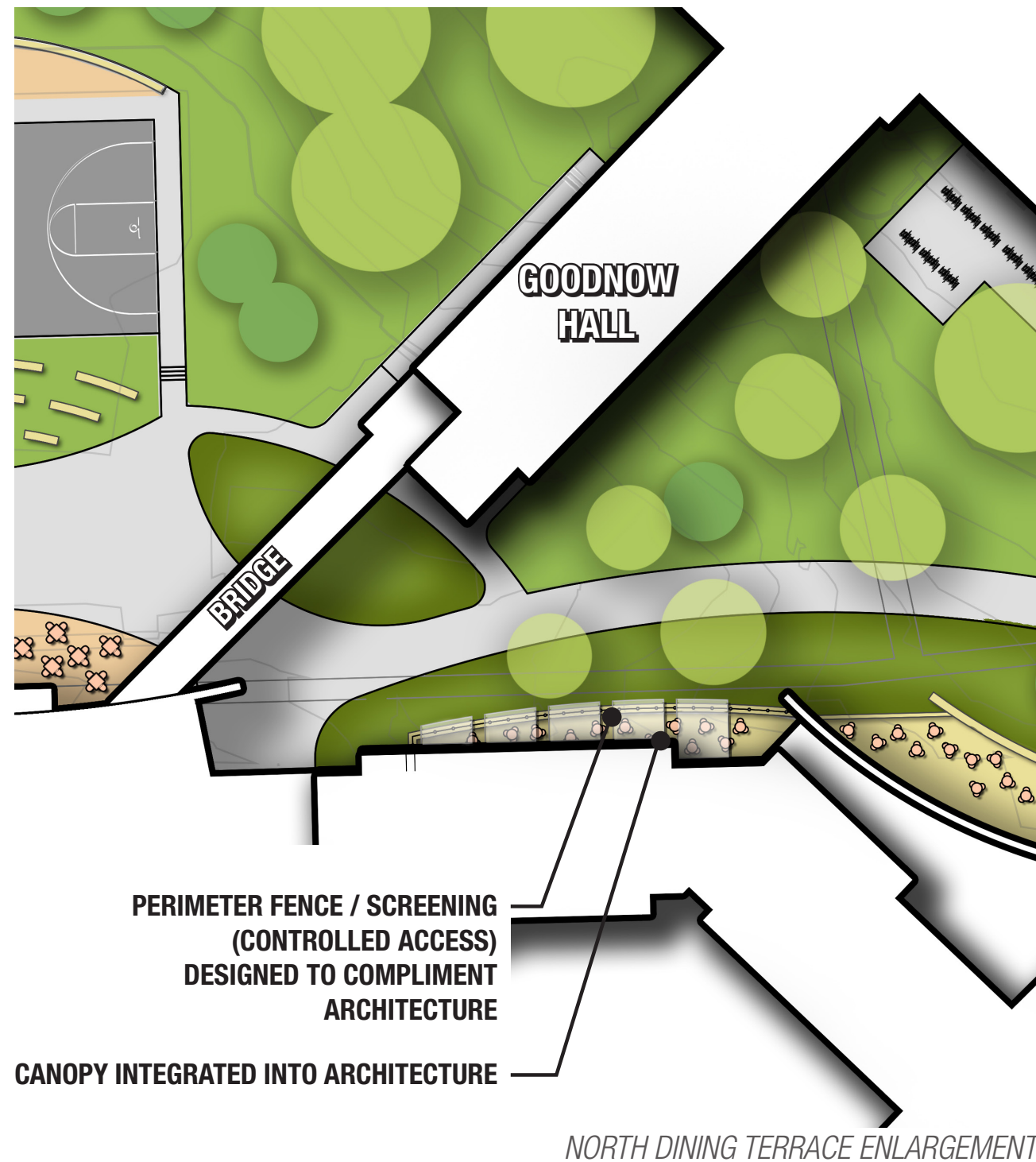
KANSAS STATE - NEW RES HALL & DINING CENTER

SITE

1/16" = 1'-0"

01/07/14

NORTH DINING TERRACE



DINING TERRACE CHARACTER IMAGES

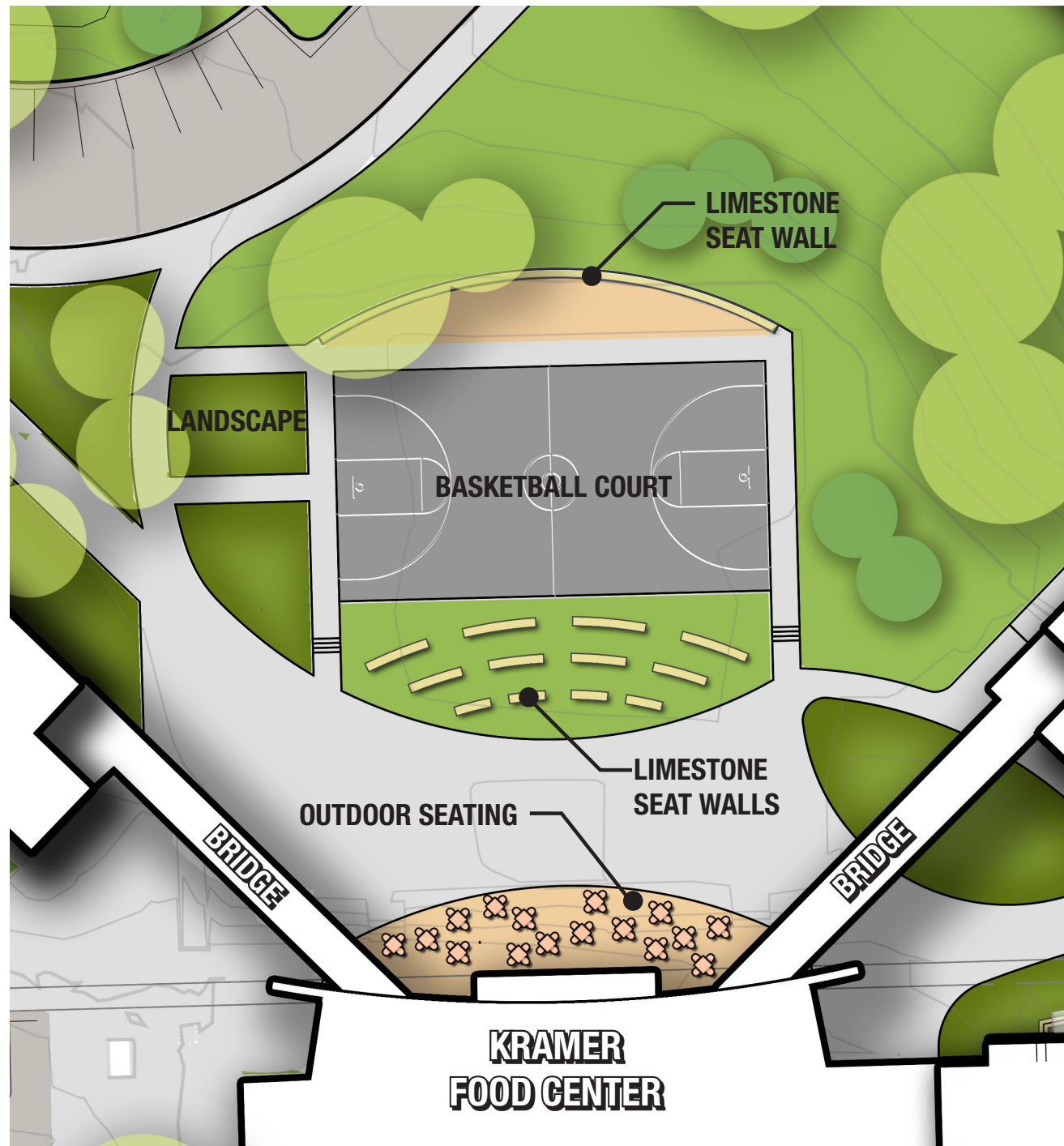
KANSAS STATE - NEW RES HALL & DINING CENTER

SITE

1/16" = 1'-0"

01/07/14

CENTRAL PLAZA



CENTRAL PLAZA ENLARGEMENT



CENTRAL PLAZA CHARACTER IMAGES

KANSAS STATE - NEW RES HALL & DINING CENTER

SITE

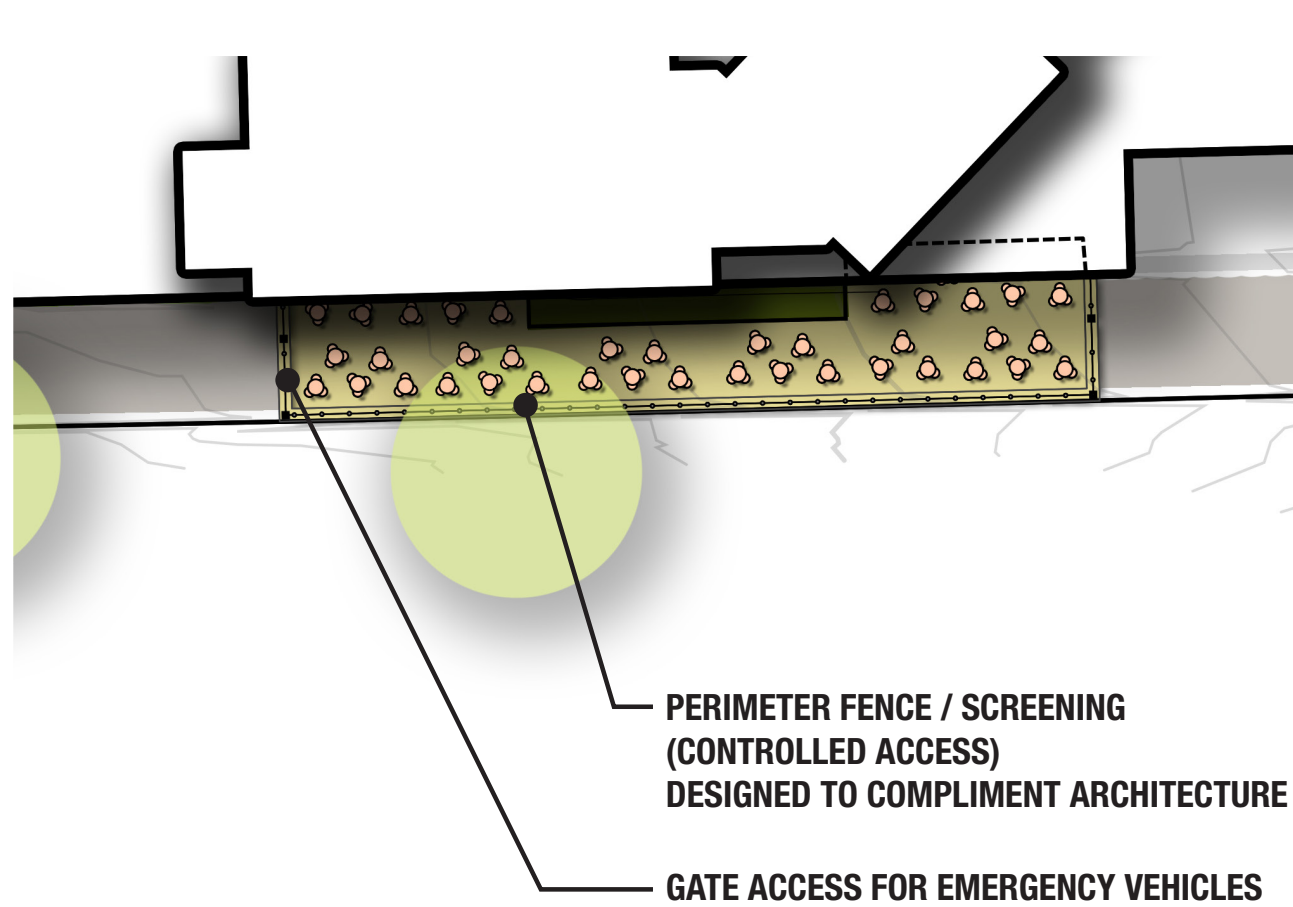
1/16" = 1'-0"

01/07/14

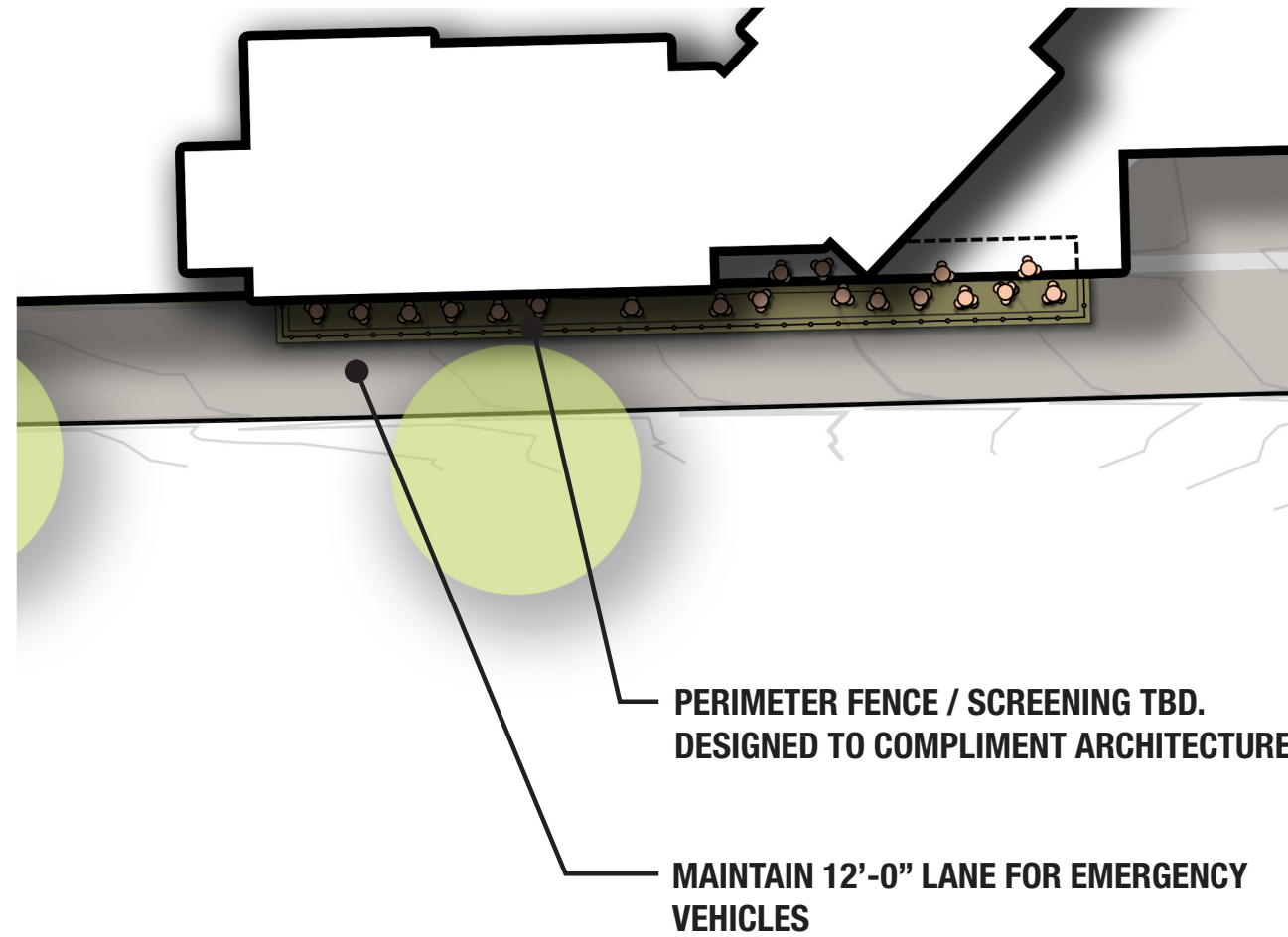


SOUTH DINING TERRACE

CONFLUENCE



SOUTH DINING TERRACE ENLARGEMENT - OPTION A



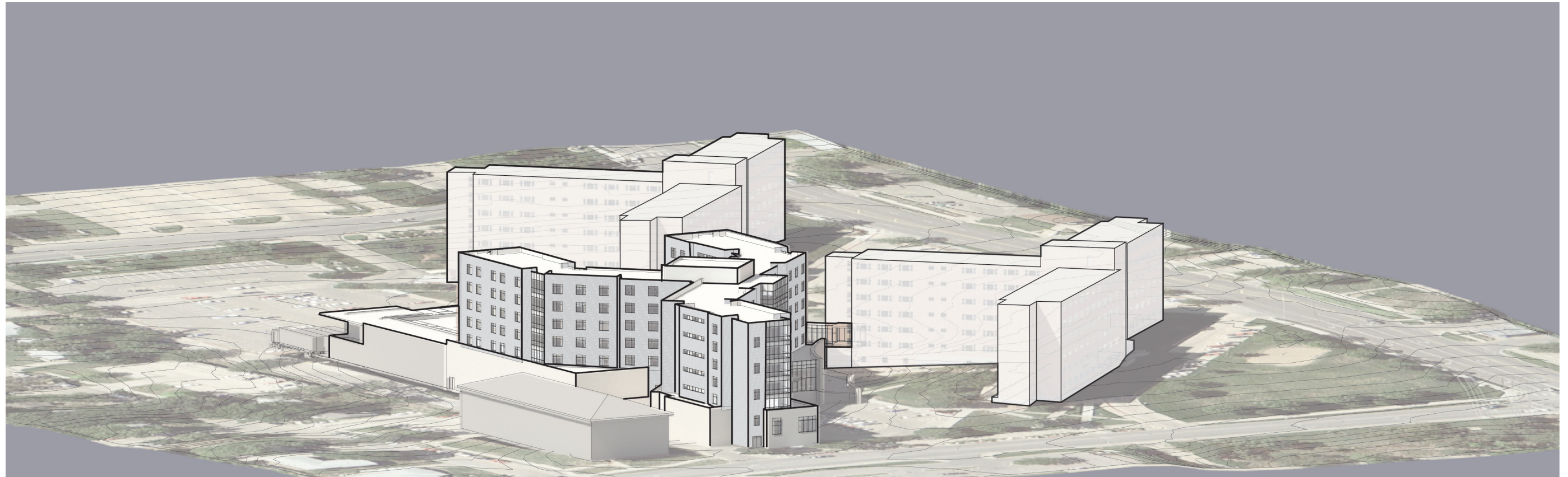
SOUTH DINING TERRACE ENLARGEMENT - OPTION B

KANSAS STATE - NEW RES HALL & DINING CENTER

SITE

1/16" = 1'-0"

01/07/14



KANSAS STATE - NEW RES HALL & DINING CENTER

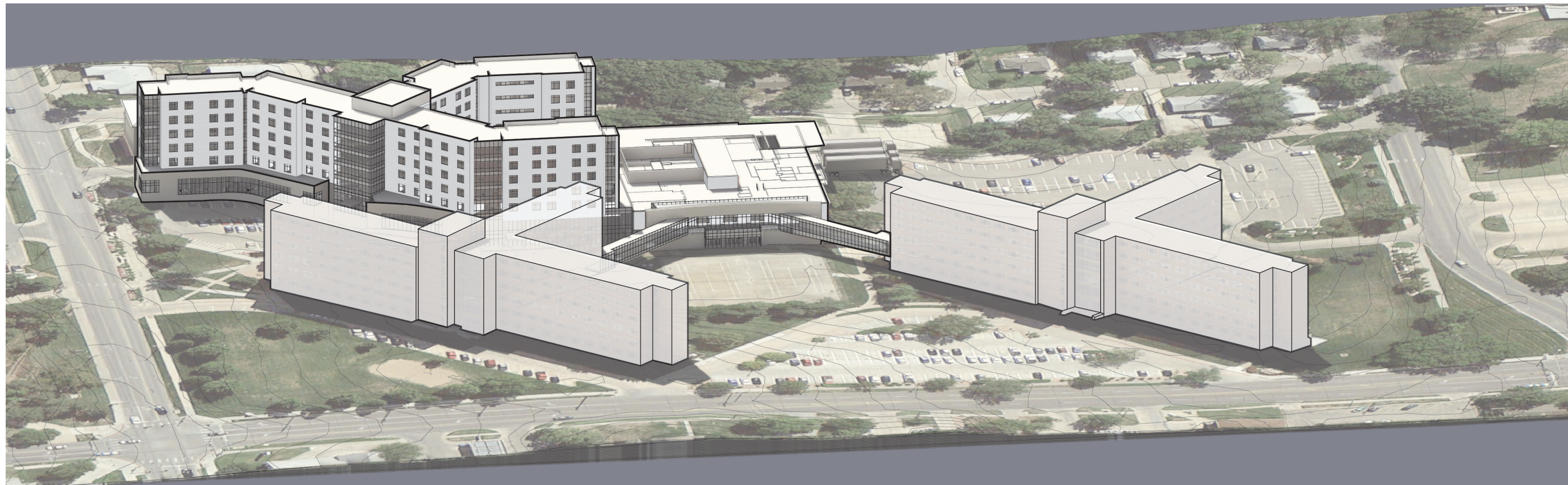
MASSING

1/16" = 1'-0"

01/07/14



TREANOR
ARCHITECTURE • INTERIORS • PLANNING • HISTORIC PRESERVATION • GRAPHIC DESIGN
ARCHITECTS P.A.

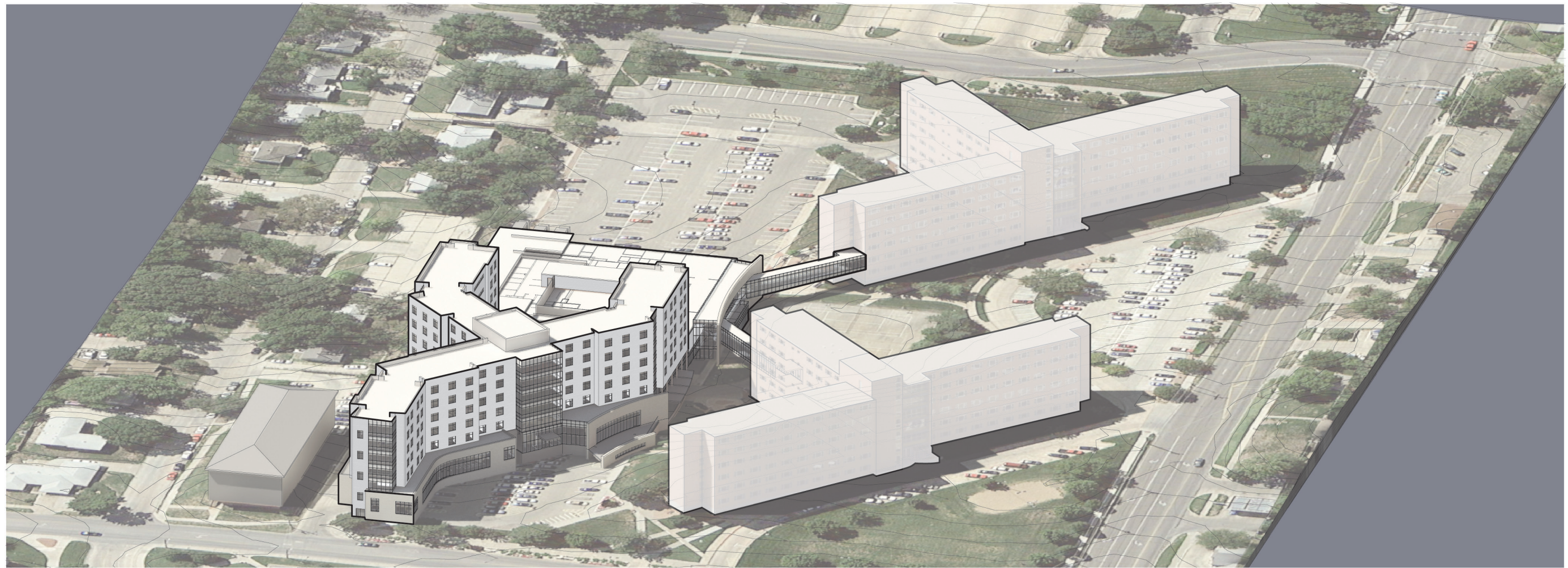


KANSAS STATE - NEW RES HALL & DINING CENTER

MASSING

1/16" = 1'-0"

01/07/14



KANSAS STATE - NEW RES HALL & DINING CENTER

MASSING

1/16" = 1'-0"

01/07/14



TREANOR
ARCHITECTURE • INTERIORS • PLANNING • HISTORIC PRESERVATION • GRAPHIC DESIGN
ARCHITECTS P.A.



KANSAS STATE - NEW RES HALL & DINING CENTER

VIEW FROM DENISON

1/16" = 1'-0"

01/07/14



KANSAS STATE - NEW RES HALL & DINING CENTER

VIEW FROM GOODNOW

1/16" = 1'-0"

01/07/14



TREANOR
ARCHITECTURE • INTERIORS • PLANNING • HISTORIC PRESERVATION • GRAPHIC DESIGN
ARCHITECTS P.A.



KANSAS STATE - NEW RES HALL & DINING CENTER

VIEW OF KRAMER COMMONS

1/16" = 1'-0"

01/07/14



KANSAS STATE - NEW RES HALL & DINING CENTER

VIEW OF KRAMER ENTRY

1/16" = 1'-0"

01/07/14

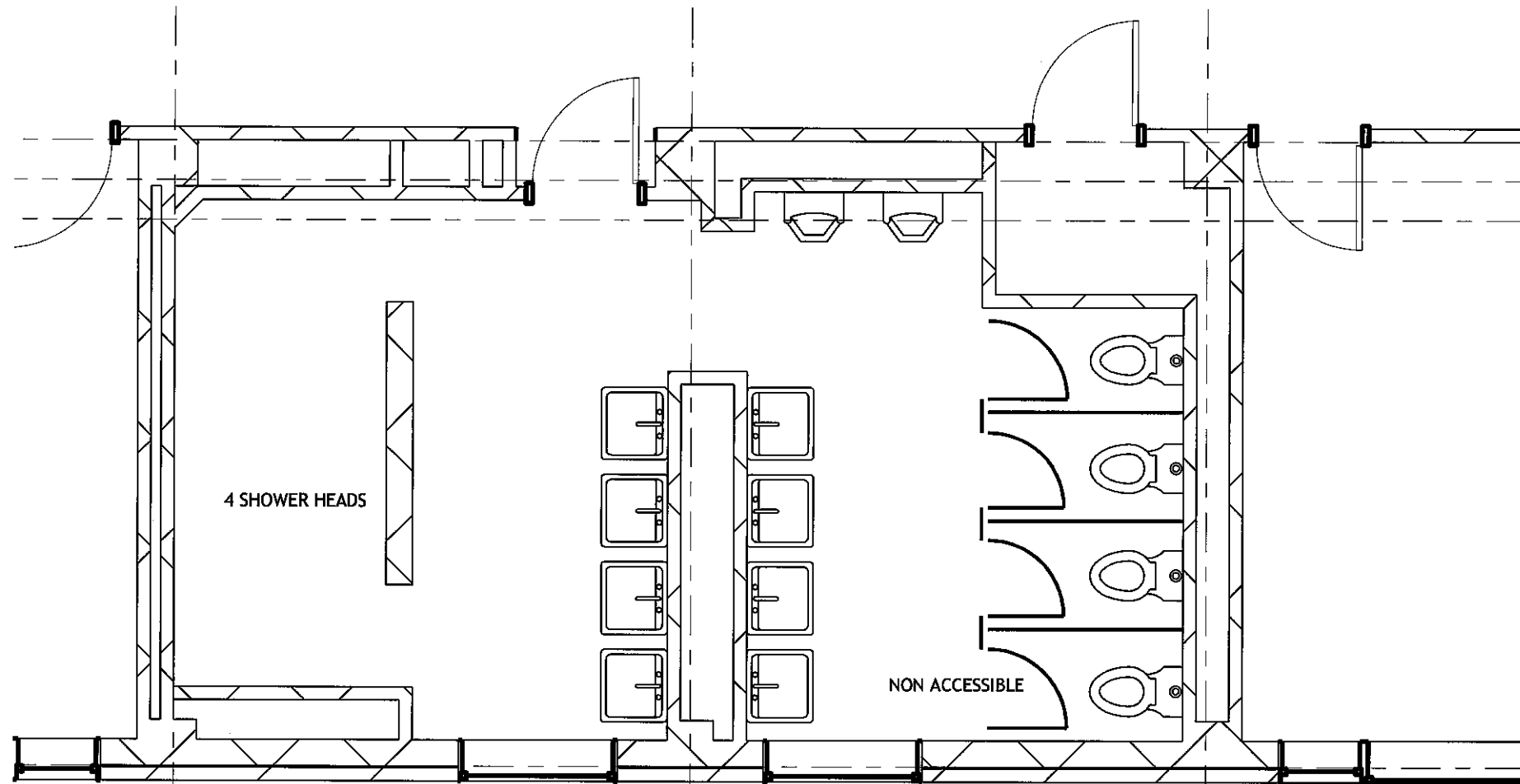


TREANOR
ARCHITECTURE • INTERIORS • PLANNING • HISTORIC PRESERVATION • GRAPHIC DESIGN
ARCHITECTS P.A.

GOODNOW & MARLATT RENOVATION

Kansas State University

ID	Task Name	Start	Finish	13	Qtr 4, 2013	Qtr 1, 2014	Qtr 2, 2014	Qtr 3, 2014	Qtr 4, 2014	Qtr 1, 2015	Qtr 2, 2015	Qtr 3, 2015	Qtr 4, 2015	Qtr 1, 2016	Qtr 2, 2016	Qtr 3, 2016	Qtr 4, 2016	Qtr 1, 2017	Qtr 2, 2017	Qtr		
				Sep	Oct	Nov	Dec	Jan	Feb	Mar	Apr	May	Jun	Jul	Aug	Sep	Oct	Nov	Dec	Jan	Feb	Mar
1	Pre-Design and Program Verification	Tue 10/8/13	Thu 10/31/13	█																		
10	Schematic Design	Tue 11/5/13	Tue 12/17/13	█																		
22	Design Development	Thu 12/5/13	Tue 1/7/14	█																		
29	Pkg 1_Marlatt-Fan Coil Units & Pumps	Mon 11/18/13	Fri 8/15/14	█																		
30	Construction Document Production	Mon 11/18/13	Wed 1/8/14	█																		
31	Construction	Mon 5/19/14	Fri 8/15/14																			
32	Pkg 2_Marlatt-Fire Alarm System	Mon 12/2/13	Mon 5/18/15	█																		
33	Construction Document Production	Mon 12/2/13	Mon 1/20/14	█																		
34	Construction	Mon 8/18/14	Mon 5/18/15																			
35	Pkg 3_Marlatt-Bathroom Remodel	Mon 6/2/14	Fri 8/7/15																			
36	(includes FCU, Makeup, Exhaust, Ceiling & Lights)	Mon 6/2/14	Mon 6/2/14																			
37	Construction Document Production	Mon 6/2/14	Mon 7/28/14																			
38	Construction	Mon 5/18/15	Fri 8/7/15																			
39	Pkg 4_Marlatt- Fire Sprinklers, Ceilings & Lighting	Mon 8/4/14	Mon 8/8/16																			
40	(includes Emergency Power)	Mon 8/4/14	Mon 8/4/14																			
41	Construction Document Production	Mon 8/4/14	Mon 9/29/14																			
42	Construction	Mon 5/16/16	Mon 8/8/16																			
43	Pkg 5_Goodnow-Renovation	Mon 9/29/14	Fri 6/2/17																			
44	(includes Bathrooms, FCU, Piping, Pumps,	Mon 9/29/14	Mon 9/29/14																			
45	Fire Sprinklers, Alarm, Ceilings & Lights)	Mon 9/29/14	Mon 9/29/14																			
46	Construction Document Production	Mon 9/29/14	Fri 12/19/14																			
47	Construction - WING A	Mon 1/4/16	Fri 6/24/16																			
48	Construction - WING B	Mon 6/27/16	Fri 12/23/16																			
49	Construction - WING C	Mon 1/2/17	Fri 6/2/17																			
50	Pkg 6_Goodnow-Roof Replacement	Mon 1/6/14	Mon 8/4/14	█																		
51	Construction Document Production	Mon 1/6/14	Fri 3/14/14	█																		
52	Construction	Mon 5/19/14	Mon 8/4/14																			

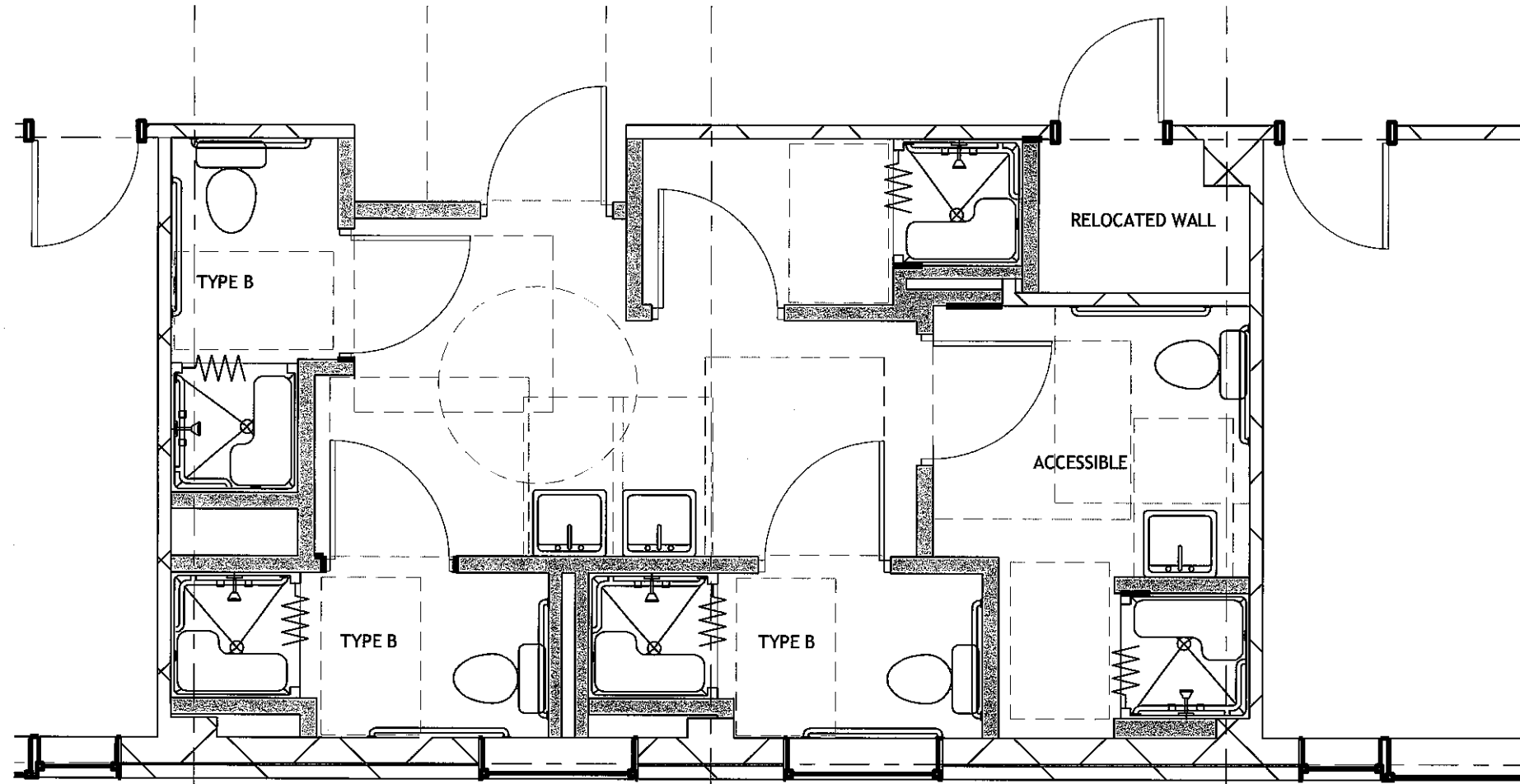


PLUMBING FIXTURES PER FLOOR				
FIXTURES:	TOILETS	URINALS	SINKS:	SHOWERS:
EXISTING	12	6	24	12 EST.
REQUIRED	11	0	11	14
WING A	4	0	3	5
WING B	4	0	3	5
WING C	4	0	5	4
TOTAL PROVIDED	12	0	11	14

Bathroom Existing

Goodnow - Kansas State University

1-6-14
1/4" = 1'-0" Scale

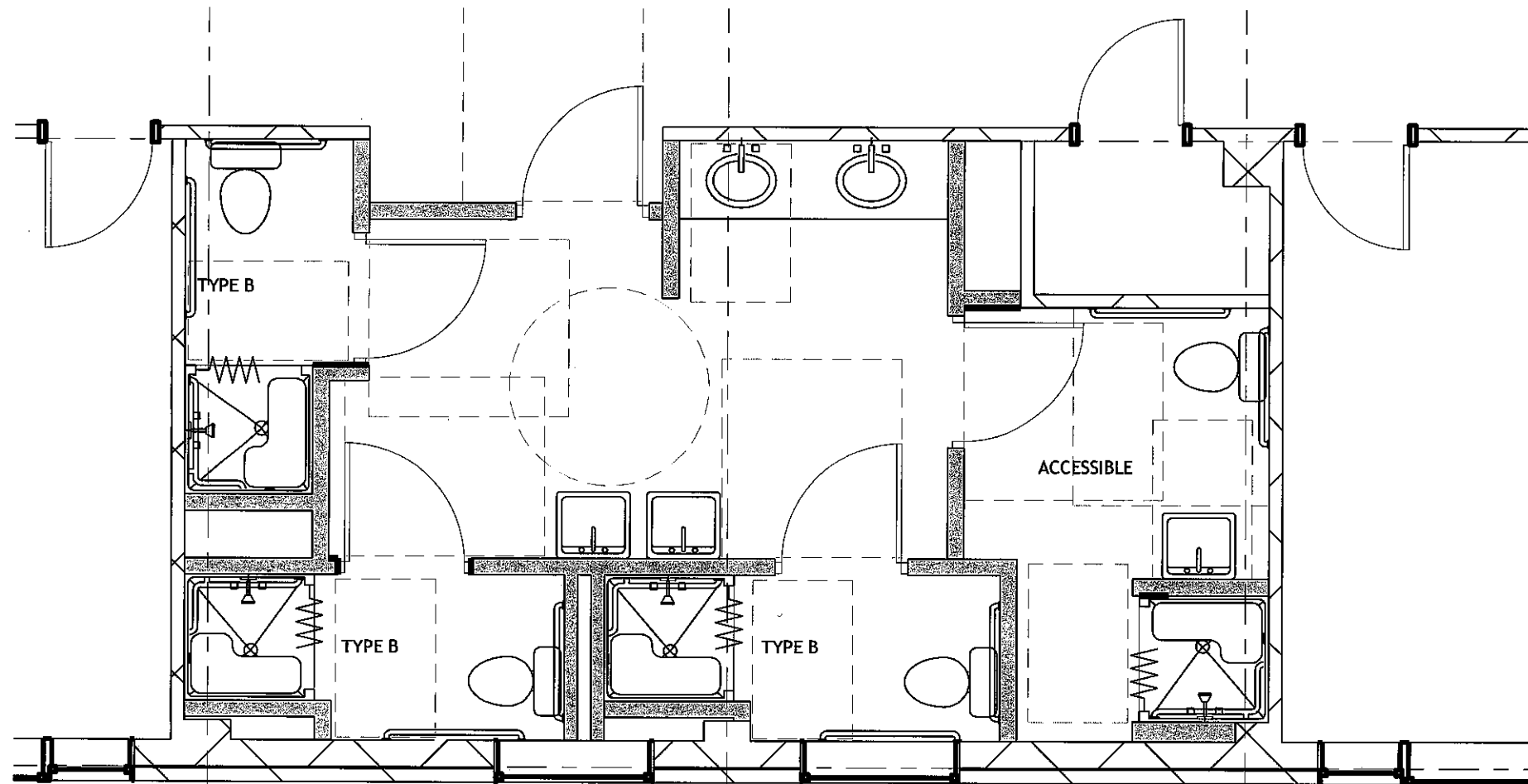


PLUMBING FIXTURES PER FLOOR				
FIXTURES:	TOILETS	URINALS	SINKS:	SHOWERS:
EXISTING	12	6	24	12 EST.
REQUIRED	11	0	11	14
WING A	4	0	3	5
WING B	4	0	3	5
WING C	4	0	5	4
TOTAL PROVIDED	12	0	11	14

Bathroom Wing - A & B

Goodnow - Kansas State University

1-6-14
1/4" = 1'-0" Scale



PLUMBING FIXTURES PER FLOOR				
FIXTURES:	TOILETS	URINALS	SINKS:	SHOWERS:
EXISTING	12	6	24	12 EST.
REQUIRED	11	0	11	14
WING A	4	0	3	5
WING B	4	0	3	5
WING C	4	0	5	4
TOTAL PROVIDED	12	0	11	14

Bathroom Wing - C

Goodnow - Kansas State University

1-6-14
1/4" = 1'-0" Scale