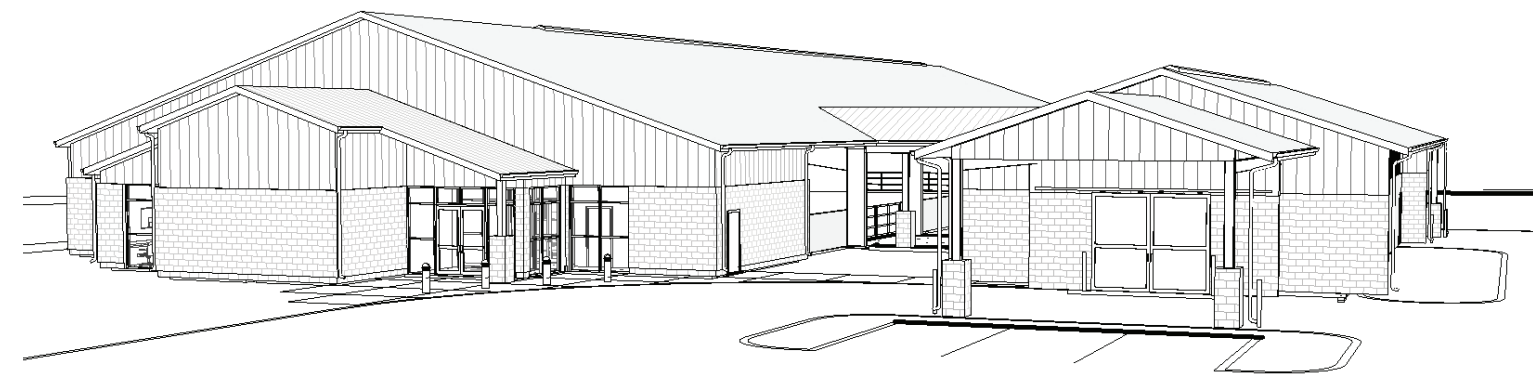
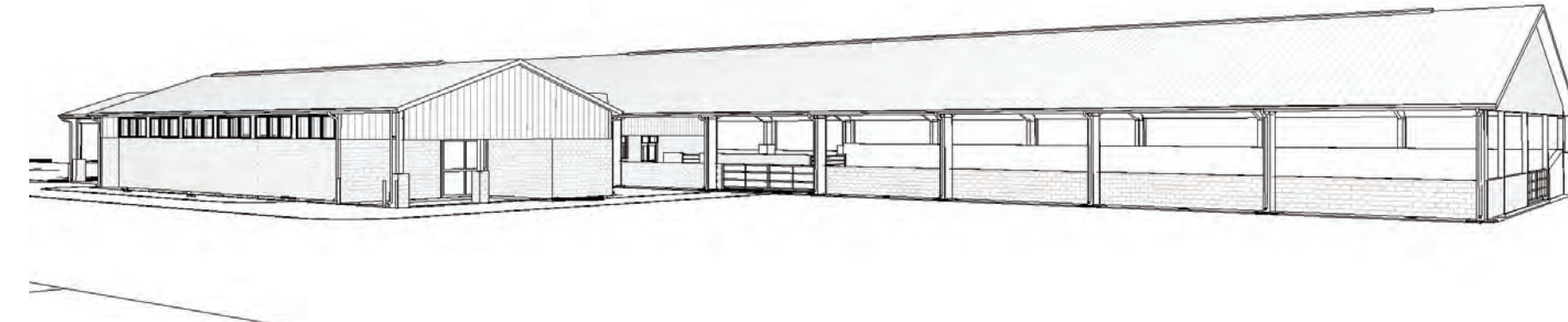


KANSAS STATE UNIVERSITY EQUINE PERFORMANCE TESTING CENTER

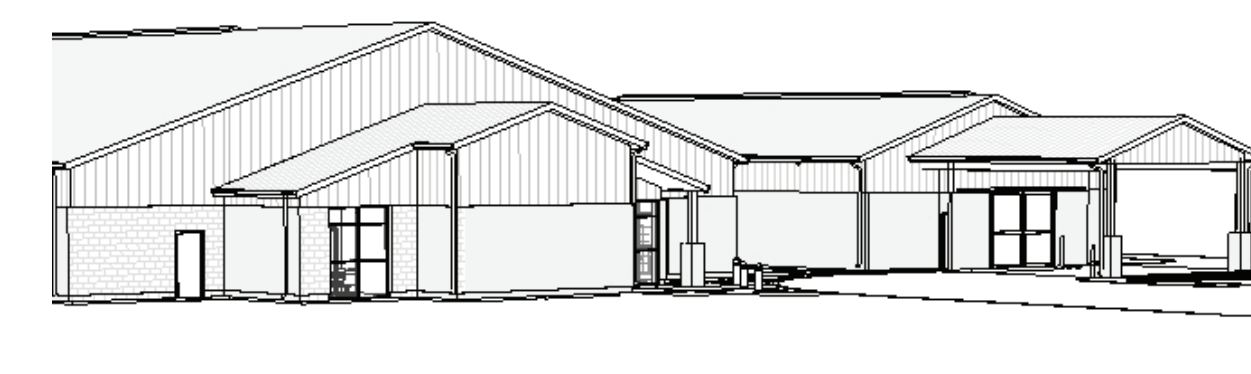
1800 DENISON AVENUE; MANHATTAN, KANSAS 66502
BUILDING NUMBER: 36700-00235
A-012593



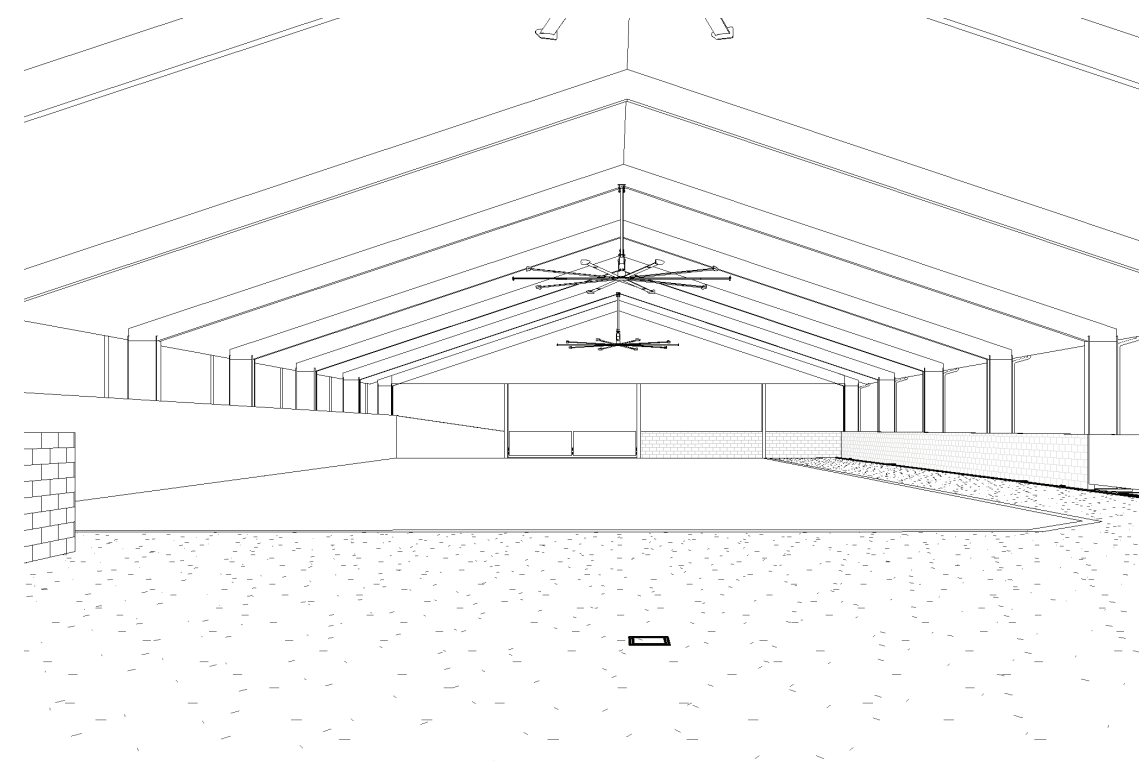
EXTERIOR PERSPECTIVE



EXTERIOR PERSPECTIVE



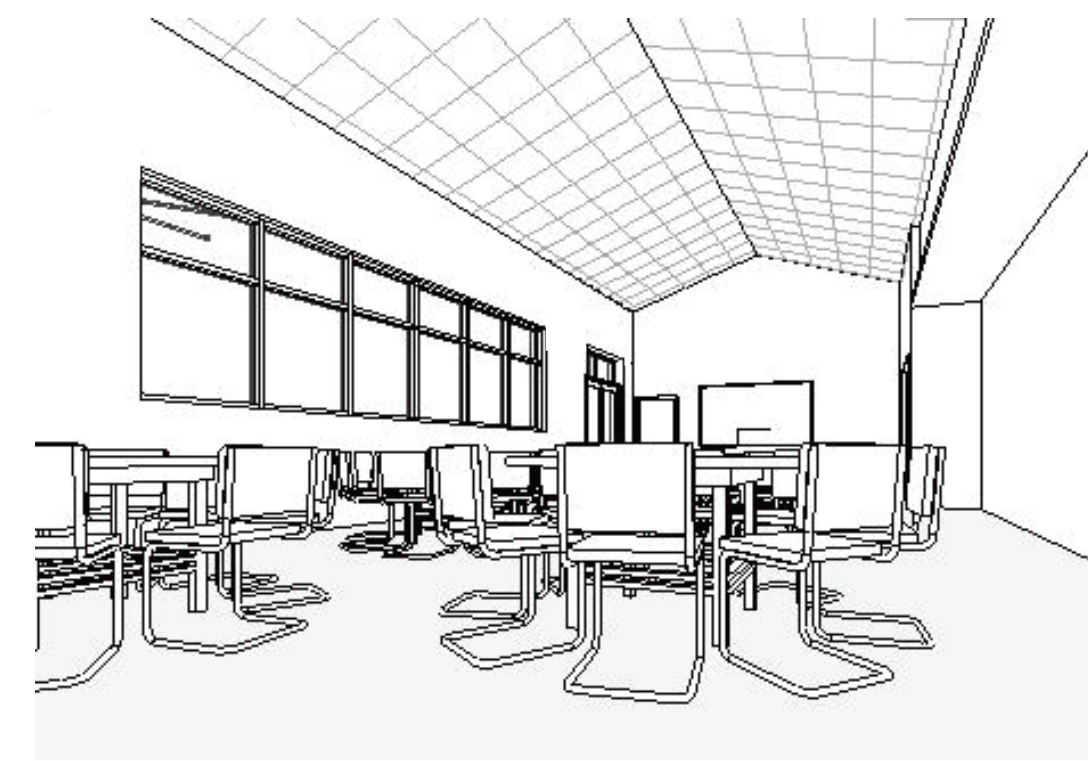
EXTERIOR PERSPECTIVE



EVALUATION AREAS



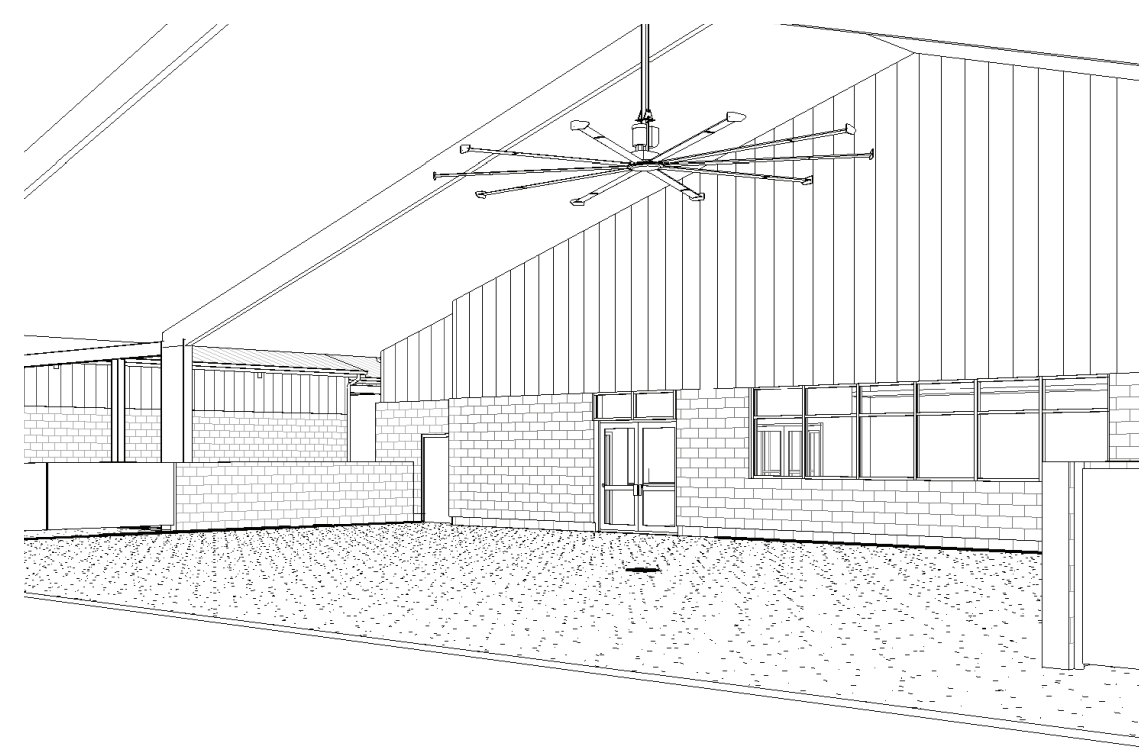
CONFERENCE ROOM



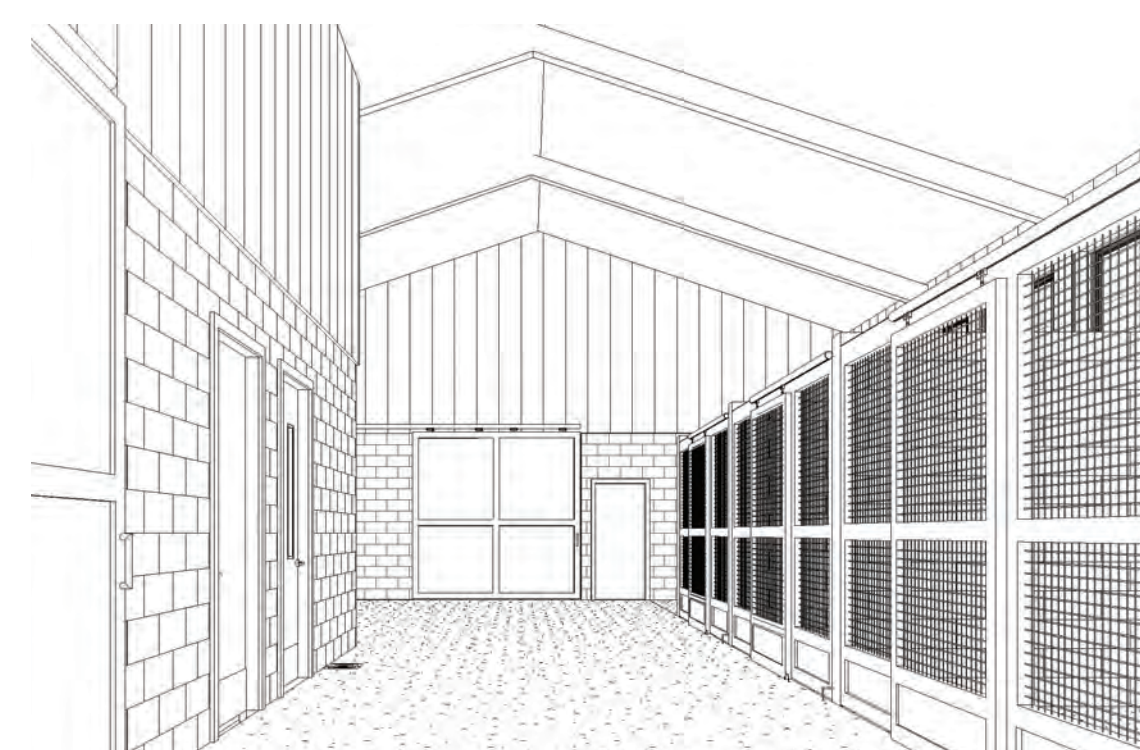
CONFERENCE ROOM



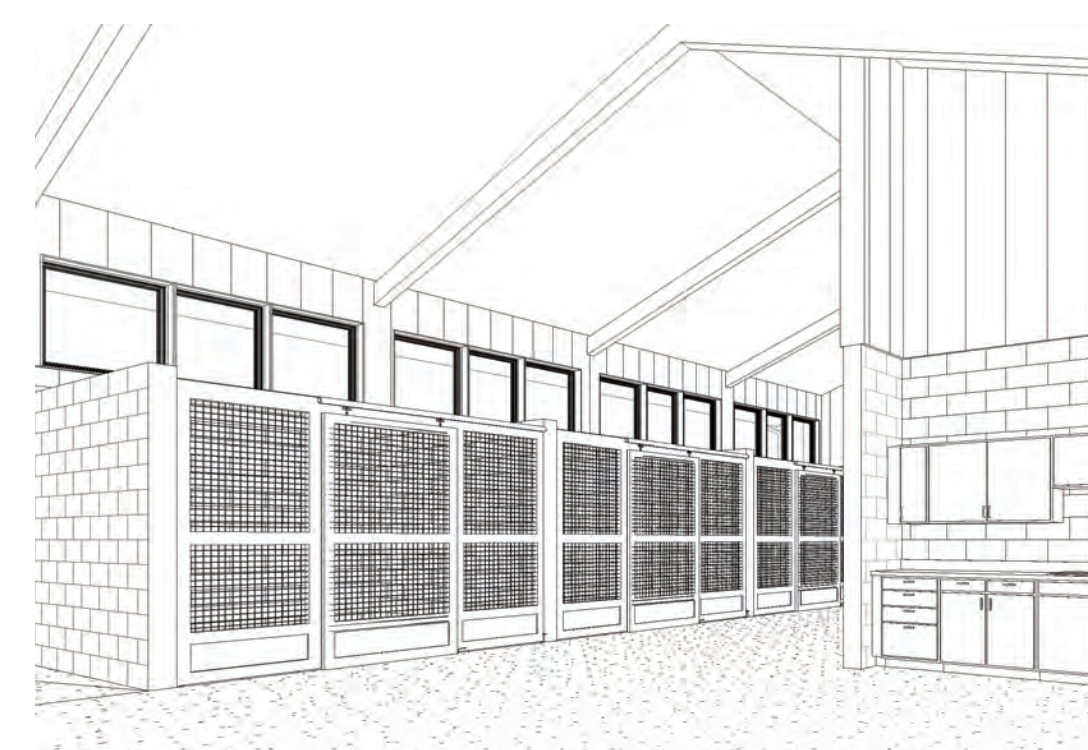
SMALL CONSULTATION ROOM



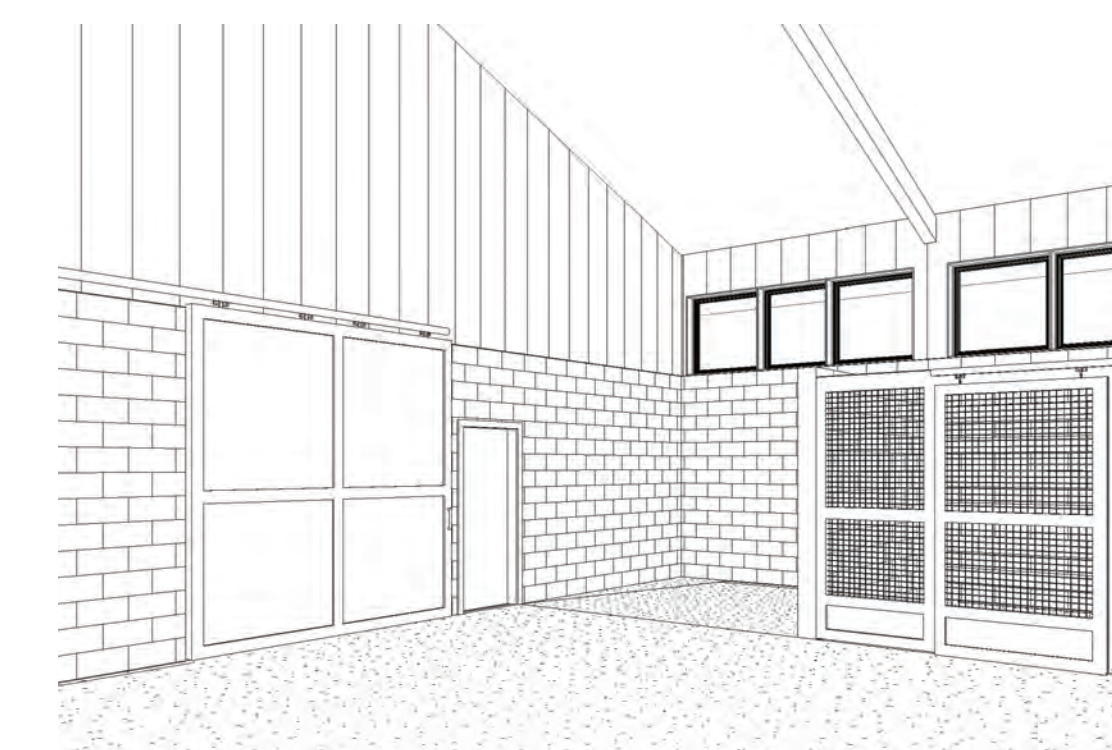
EVALUATION AREAS



STALL BARN AISLE - ENTRY VIEW



STALLS / AISLE / EXAM AREA



WASH AREA / STALLS

ARCHITECT

GH2 ARCHITECTS

Design. Service. Solutions.

GH2 Architects, LLC
320 South Boston, Suite 1600
Tulsa, Oklahoma 74103
Tel 918.587.6158, Fax 918.587.0357, www.gh2.com

ENGINEER

CIVIL, MEP, STRUCTURAL

PEC

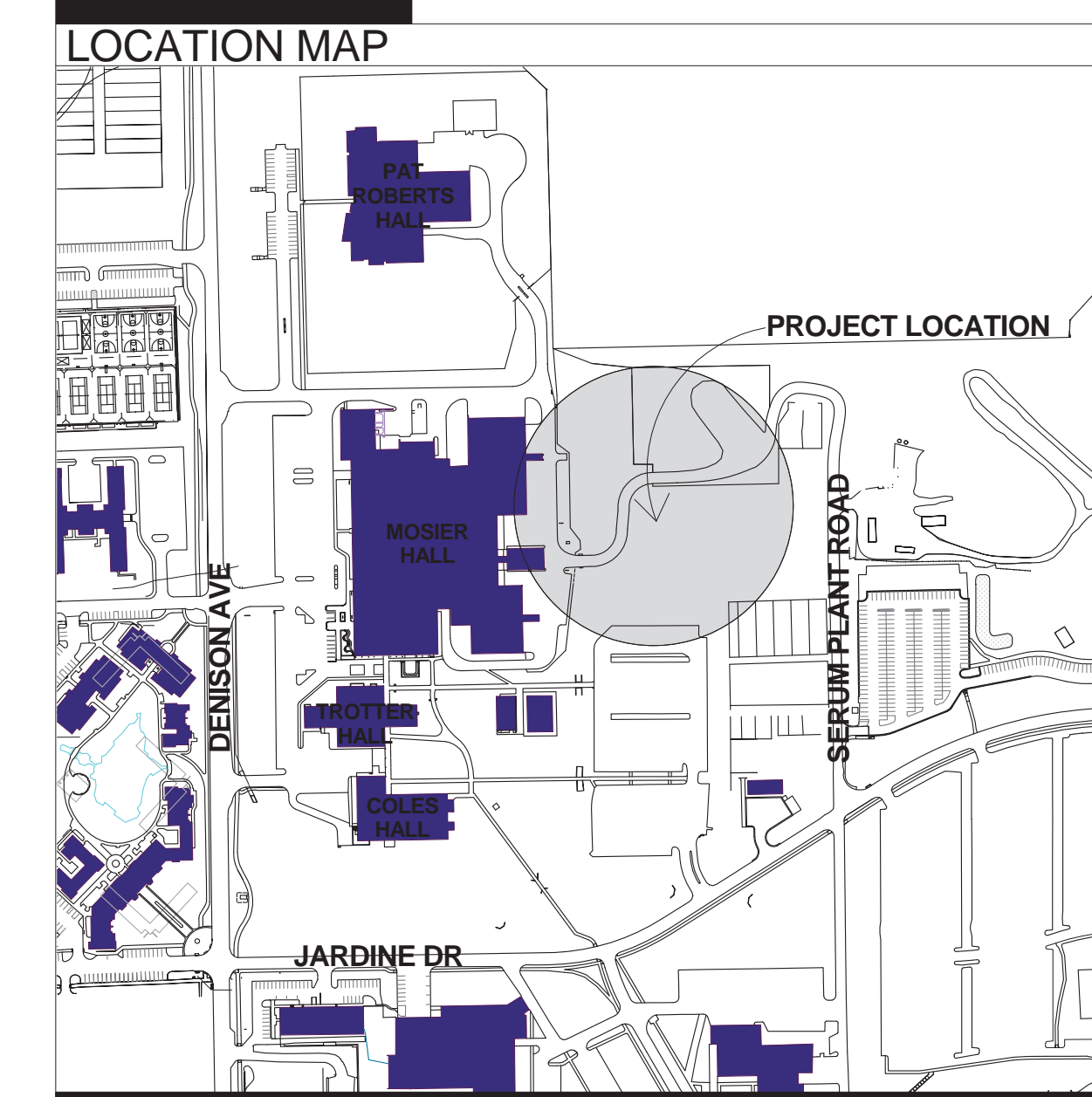
Professional Engineering Consultants, P.A.
303 South Topoka
Wichita, Kansas 67202
Tel 316.262.2691, www.pec1.com

SHEET INDEX

G001	COVER SHEET
G002	CODE COMPLIANCE PLAN
CIVIL	
C001	SITE GRADING PLAN
ARCHITECTURAL	
AS101	ARCHITECTURAL SITE PLAN
A101	OVERALL FLOOR PLAN
A110	ROOF PLAN
A201	EXTERIOR ELEVATIONS
A202	EXTERIOR ELEVATIONS
A301	BUILDING SECTIONS
A302	BUILDING SECTIONS
A303	BUILDING SECTIONS
A304	BUILDING SECTIONS
A401	ENLARGED FLOOR PLAN
A402	ENLARGED FLOOR PLAN
A403	ENLARGED FLOOR PLAN
MECHANICAL	
M001	MECHANICAL EQUIPMENT LAYOUT
ELECTRICAL	
E001	ELECTRICAL EQUIPMENT LAYOUT

SYMBOL LEGEND

BUILDING SECTION AND REFERENCE	
ENLARGED FLOOR PLAN	
ROOM NAME ROOM NUMBER	
ELEVATION OR HEIGHT SYMBOL	
GRID BUBBLE	



GH2 ARCHITECTS
320 South Boston, Suite 1600
Tulsa, Oklahoma 74103
T: 918.587.6158, GH2.COM
A SPECIALTY PRACTICE OF GR2 ARCHITECTS, LLC

PEC
PROFESSIONAL ENGINEERING CONSULTANTS, P.A.
303 South Topoka
Wichita, KS 67202
T: 316.262.2691
PEC1.COM

Veterinary Health Center
AT KANSAS STATE UNIVERSITY

INTERIM REVIEW ONLY

DOCUMENT INCOMPLETE.
NOT INTENDED FOR PERMIT,
BIDDING OR CONSTRUCTION

ARCHITECT: MICHAEL HALL
LICENSE # : A5618

Department of Administration
Procurement Management
Design, Construction & Compliance
800 SW Jackson, Suite 700
Topeka, Kansas 66612-1216
Phone 785-296-8899

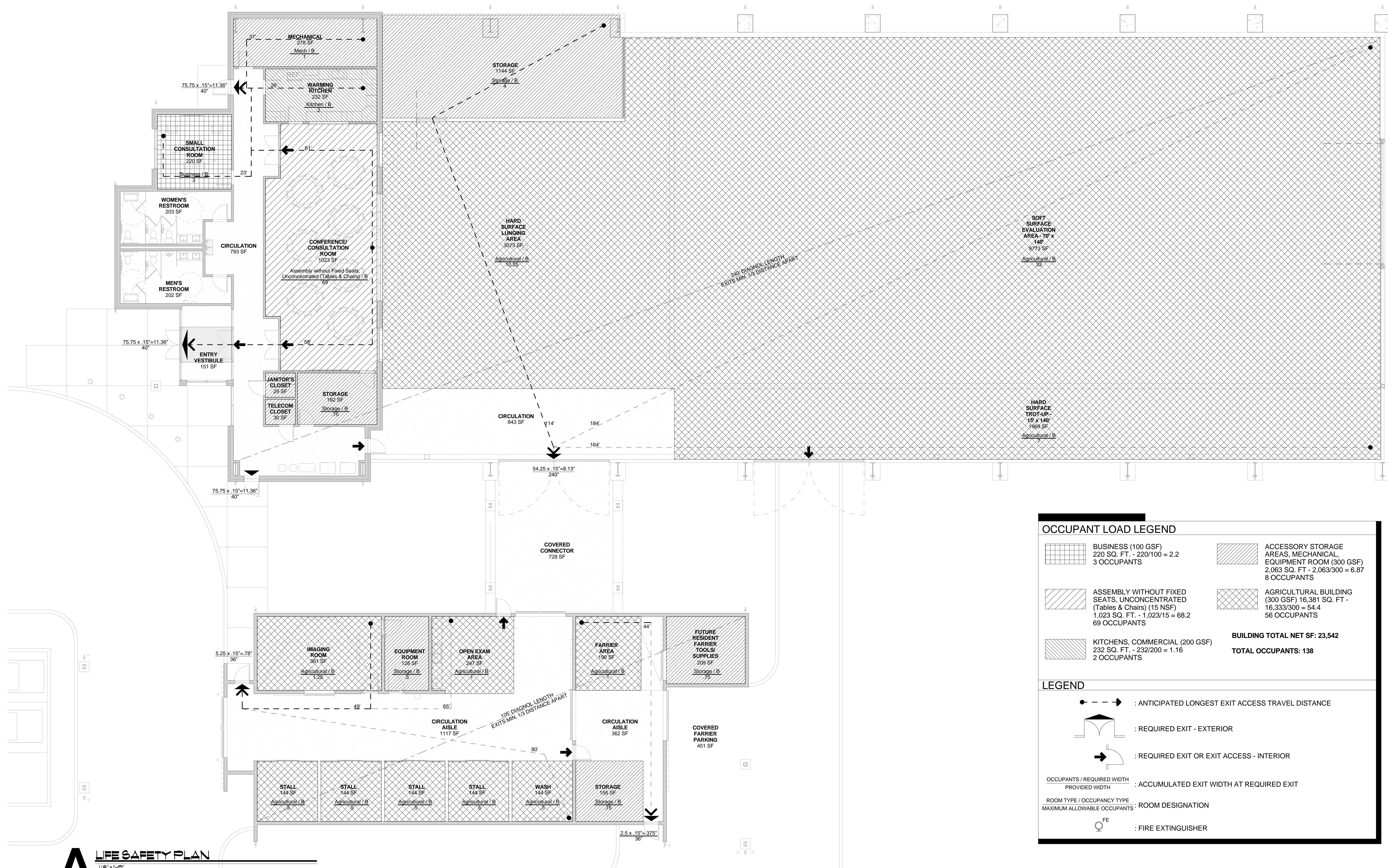
KANSAS STATE UNIVERSITY
VETERINARY HEALTH CENTER
EQUINE PERFORMANCE TESTING CENTER
1810 DENISON AVENUE; MANHATTAN, KANSAS 66502
BUILDING NUMBER: 36700-00235
DATE: FEBRUARY 2, 2015
DRAWN BY: KBA

COVER SHEET

A-012593

G001

SCHEMATIC DESIGN



OCCUPANT LOAD LEGEND

	BUSINESS (100 GSF) 220 SQ. FT. - 220/100 = 2.2 3 OCCUPANTS		ACCESSORY STORAGE AREAS, MECHANICAL, EQUIPMENT ROOM (300 GSF) 2,063 SQ. FT. - 2,063/300 = 6.87 8 OCCUPANTS
	ASSEMBLY WITHOUT FIXED SEATS, UNCONCENTRATED (Tables & Chairs) (15 NSF) 1,023 SQ. FT. - 1,023/15 = 68.2 69 OCCUPANTS		AGRICULTURAL BUILDING (300 GSF) 16,381 SQ. FT. - 16,383/300 = 54.4 56 OCCUPANTS
	KITCHENS, COMMERCIAL (200 GSF) 232 SQ. FT. - 232/200 = 1.16 2 OCCUPANTS	BUILDING TOTAL NET SF: 23,542 TOTAL OCCUPANTS: 138	

LEGEND

- : ANTICIPATED LONGEST EXIT ACCESS TRAVEL DISTANCE
- : REQUIRED EXIT - EXTERIOR
- : REQUIRED EXIT OR EXIT ACCESS - INTERIOR
- : OCCUPANTS / REQUIRED WIDTH PROVIDED WIDTH : ACCUMULATED EXIT WIDTH AT REQUIRED EXIT
- : ROOM TYPE / OCCUPANCY TYPE : ROOM DESIGNATION
- : FIRE EXTINGUISHER

A LIFE SAFETY PLAN

1/8" = 1'-0"

- ### CODE INFORMATION
- 2006 INTERNATIONAL BUILDING CODE
 - 2006 INTERNATIONAL BUILDING FIRE CODE
 - 2006 INTERNATIONAL RESIDENTIAL CODE
 - 2006 INTERNATIONAL MECHANICAL CODE
 - 2006 INTERNATIONAL PLUMBING CODE
 - 2006 INTERNATIONAL FUEL GAS CODE
 - 2006 INTERNATIONAL ENERGY CONSERVATION CODE
 - 2007 NFPA - PORTABLE FIRE EXTINGUISHERS
 - 2007 NFPA - INSTALLATION OF SPRINKLER SYSTEMS
 - 2007 NFPA - INSTALLATION OF STANDPIPE AND HOSE SYSTEMS
 - 2008 NFPA - TESTING FIRE SPRINKLER SYSTEMS
 - 2008 NATIONAL ELECTRIC CODE
 - 2007 NATIONAL FIRE ALARM CODE
 - 2005 EMERGENCY AND STANDBY POWER SYSTEMS
 - KANSAS FIRE PREVENTION CODE
 - 2010 AMERICANS WITH DISABILITIES ACT (AADAG) WITH UPDATES
 - KANSAS STATE BOILER CODE

- ### BUILDING CODE REVIEW
- SQUARE FEET:
 - NEW (29,600) GROSS SQUARE FEET (INCLUDING COVERED LOADING/UN-LOADING, COVERED FARRIER PARKING AND COVERED CONNECTOR)
 - USE AND OCCUPANCY CLASSIFICATION:
 - BUSINESS GROUP B (SECTION 304)
 - BUILDING TYPE, ALLOWABLE HEIGHT, AND BUILDING AREA:
 - NEW BUILDING TYPE: IIB
 - FIRE-RESISTANCE RATING FOR NEW BUILDING ELEMENTS IIB: (TABLE 601)
 - STRUCTURAL FRAME 0
 - EXTERIOR BEARING WALLS 0 HR
 - INTERIOR BEARING WALLS 0 HR
 - EXTERIOR NONBEARING WALLS AND PARTITIONS 0 AND 1HR (SEE TABLE 602)
 - INTERIOR NONBEARING WALLS AND PARTITIONS 0HR
 - FLOOR CONSTRUCTION 0HR
 - ROOF CONSTRUCTION 0HR
 - ALLOWABLE TYPE IIB BUILDING AREA: UNLIMITED BUILDING AREA (SECTION 507.3)
 - ALLOWABLE BUILDING HEIGHT: 5 STORIES (TABLE 503 & SECTION 504.2)
 - BUILDING TO BE FULLY SPRINKLED

- ### EGRESS REQUIREMENTS
- MEANS OF EGRESS (TABLE 1015.1):
 - MAXIMUM OCCUPANT LOAD FOR ONE EXIT=49
 - NUMBER OF EXITS (TABLE 1019.1):
 - 2 EXITS: 1 - 500 OCCUPANTS
 - MAXIMUM TRAVEL DISTANCE-EXIT ACCESS TRAVEL DISTANCE (TABLE 1016.1):
 - 300 FEET WITH SPRINKLER SYSTEM
 - SWING OF EGRESS DOOR (1008.1.2):
 - SWING IN DIRECTION OF EGRESS TRAVEL WITH OCCUPANT LOADS OF 50+
 - CORRIDOR FIRE RESISTANCE RATING (TABLE 1017.1):
 - OCCUPANCY GROUP B, GREATER THAN 30 OCCUPANTS: 0HR RATING WITH SPRINKLER SYSTEM
 - CORRIDORS
 - MAXIMUM DEAD END (SECTION 1017.3 - EXCEPTION 2): WITH SPRINKLER SYSTEM SHALL NOT EXCEED 50'
 - CORRIDORS / EGRESS WIDTH
 - MINIMUM WIDTH (TABLE 1005.1) WITH SPRINKLER SYSTEM: CORRIDOR / EGRESS WIDTH IS 0.15" PER OCCUPANT

- ### PLUMBING FIXTURE REQUIREMENTS PER IBC TABLE 2902.1
- | LAVATORIES | |
|--|--|
| MALE: 1 PER 40 OCCUPANTS FOR FIRST 80 & 1 PER 80 FOR REMAINDER EXCEEDING 80:
69 MALE OCCUPANTS
69 OCC/40 = 1.7 2
2 LAVATORIES REQUIRED
2 LAVATORIES PROVIDED | FEMALE: 1 PER 40 OCCUPANTS FOR FIRST 80 & 1 PER 80 FOR REMAINDER EXCEEDING 80:
69 MALE OCCUPANTS
69 OCC/40 = 1.7 2
2 LAVATORIES REQUIRED
2 LAVATORIES PROVIDED |
| WATER CLOSETS / URINALS | |
| MALE: 1 PER 25 OCCUPANTS FOR FIRST 50 & 1 PER 50 FOR REMAINDER EXCEEDING 50:
69 MALE OCCUPANTS
69 OCC/25 = 2.7 3
3 WATERCLOSETS/URINALS REQUIRED
3 WATERCLOSETS/URINALS PROVIDED | FEMALE: 1 PER 25 OCCUPANTS FOR FIRST 50 & 1 PER 50 FOR REMAINDER EXCEEDING 50:
69 MALE OCCUPANTS
69 OCC/25 = 2.7 3
3 WATERCLOSETS REQUIRED
3 WATERCLOSETS PROVIDED |
| DRINKING FOUNTAINS | |
| 1 FOUNTAIN PER 100 OCCUPANTS
138 OCC/100 = 1.38 2
2 FOUNTAINS REQUIRED
2 FOUNTAINS PROVIDED | |

GRALLA EQUINE ARCHITECTS
GH2
320 South Bessey, Suite 1600
Topeka, KS 67202
T: 918.587.6168 GH2.COM
A SPECIALTY PRACTICE OF GH2 ARCHITECTS, LLC

PEC
PROFESSIONAL ENGINEERING CONSULTANTS, P.A.
303 South Topoka
Wichita, KS 67202
T: 316.262.2091
PEC1.COM

Veterinary Health Center
AT KANSAS STATE UNIVERSITY

INTERIM REVIEW ONLY

DOCUMENT INCOMPLETE, NOT INTENDED FOR PERMIT, BIDDING OR CONSTRUCTION

ARCHITECT: MICHAEL HALL
LICENSE # : A5618

Department of Administration
Procurement Management
Design, Construction & Compliance
800 SW Jackson, Suite 700
Topeka, Kansas 66612-1216
Phone 785-296-8899

KANSAS STATE UNIVERSITY
VETERINARY HEALTH CENTER
EQUINE PERFORMANCE TESTING CENTER
1810 DENISON AVENUE, MANHATTAN, KANSAS 66502
BUILDING NUMBER: 36700-00235
DATE: FEBRUARY 2, 2015
DRAWN BY: KBA

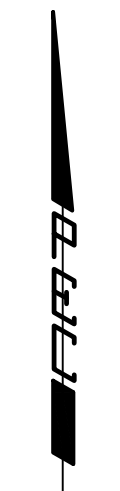
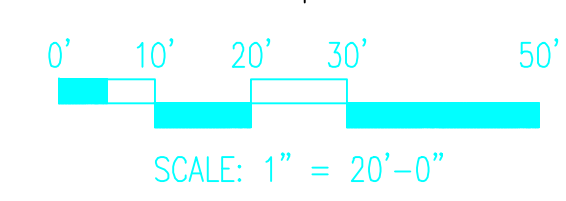
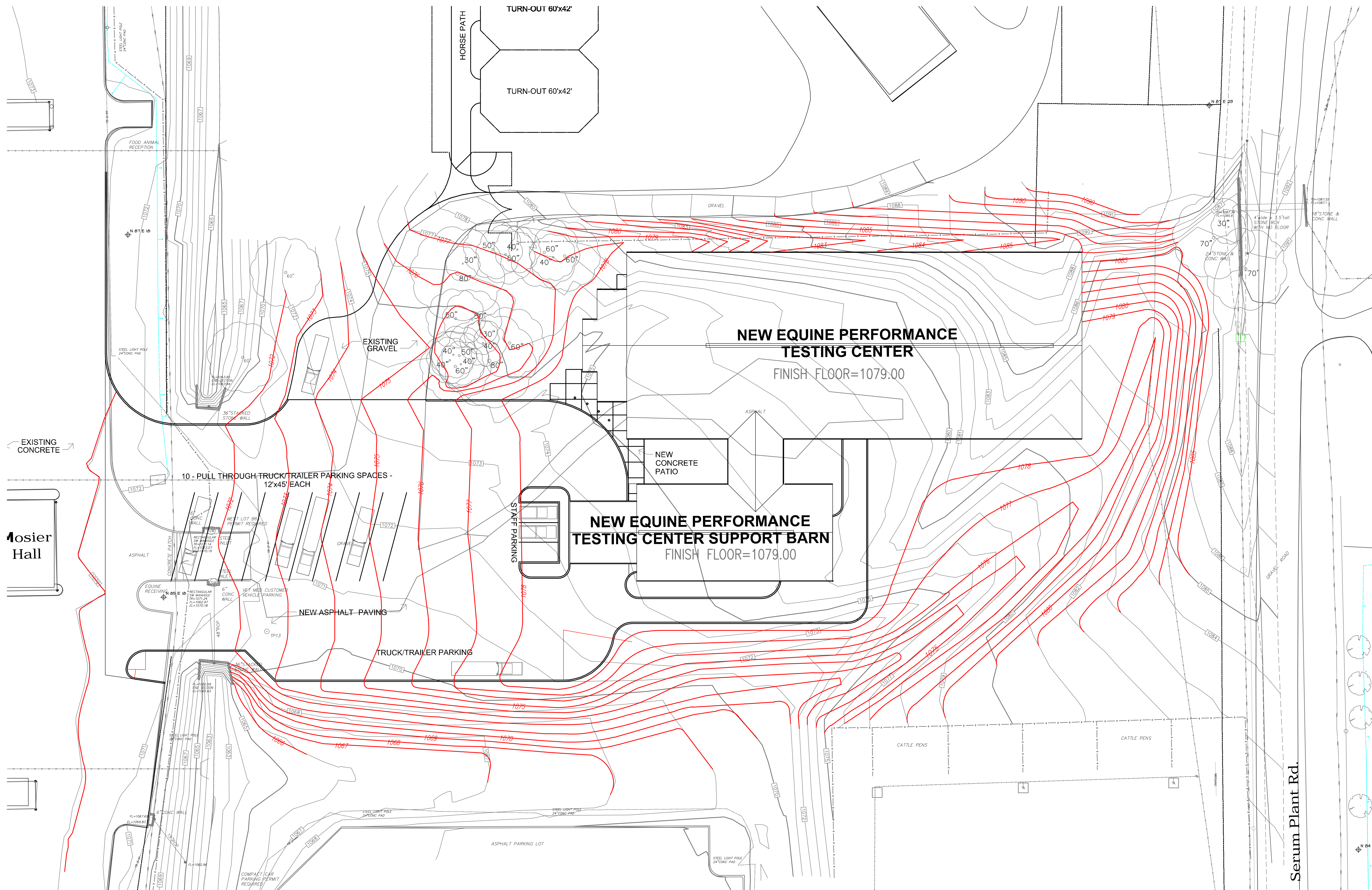
CODE COMPLIANCE PLAN

A-012593

G002

SCHEMATIC DESIGN

© 2014 COPYRIGHT GH2 ARCHITECTS, LLC



GH2 ARCHITECTS
 320 South Bessey, Suite 1600
 Topeka, KS 67202
 T: 918.587.6168 GH2.COM
 A SPECIALTY PRACTICE OF GR2 ARCHITECTS, LLC

PEC
 PROFESSIONAL ENGINEERING CONSULTANTS, P.A.
 303 South Topoka
 Wichita, KS 67202
 T: 316.262.0891
 PEC1.COM

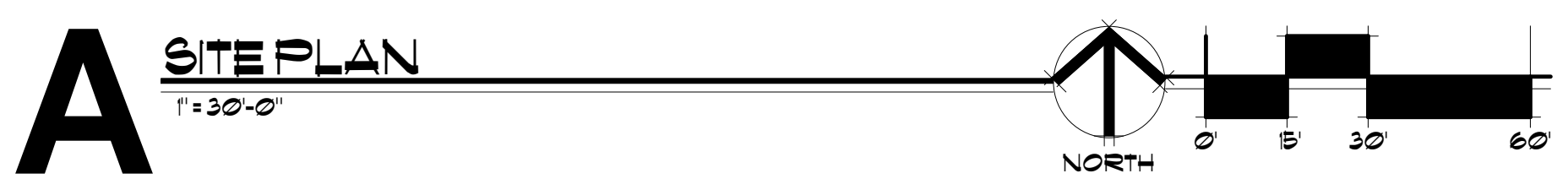
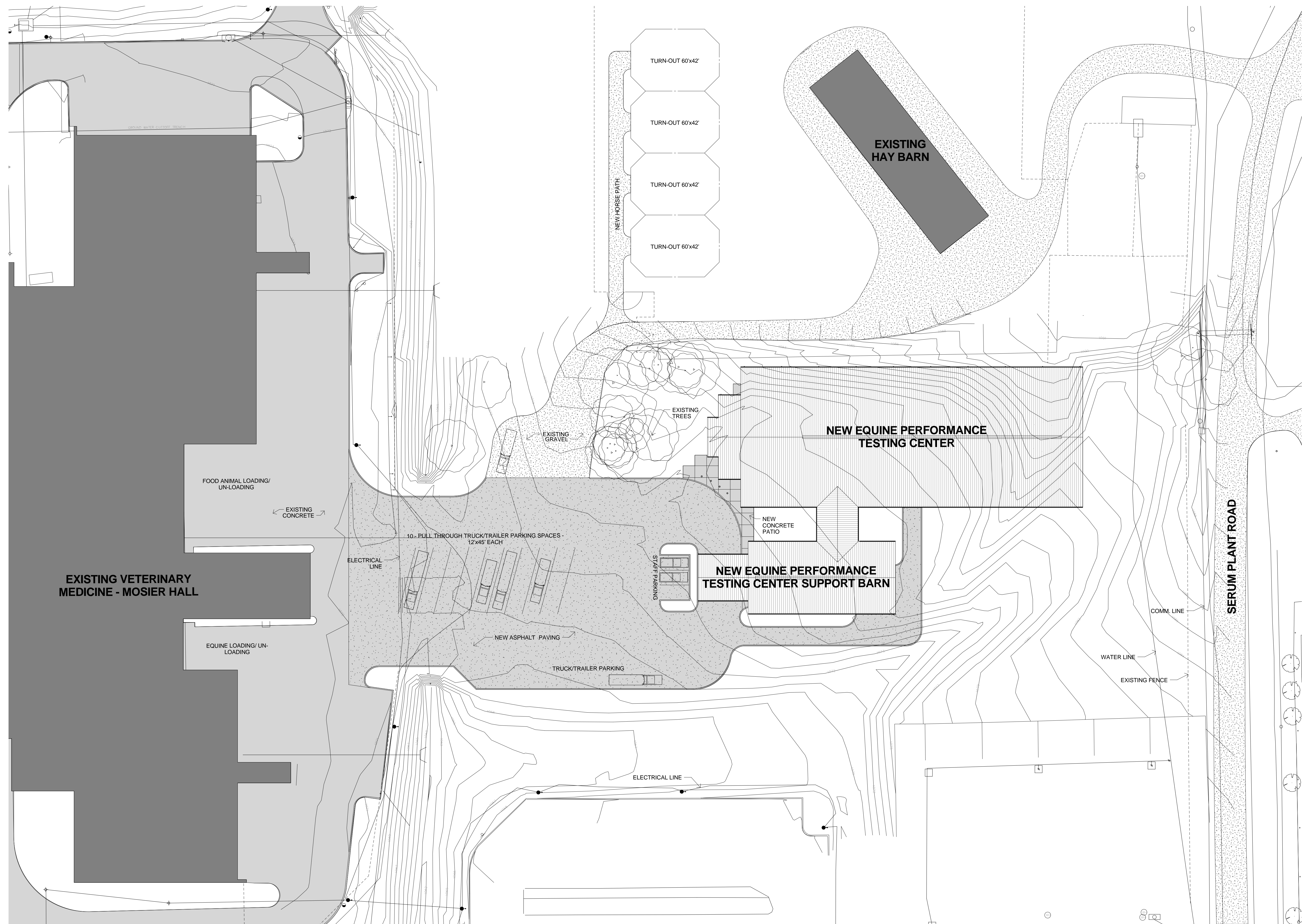
Veterinary Health Center
 AT KANSAS STATE UNIVERSITY

INTERIM REVIEW ONLY
 DOCUMENT INCOMPLETE.
 NOT INTENDED FOR PERMIT,
 BIDDING OR CONSTRUCTION.
 ARCHITECT: MICHAEL HALL
 LICENSE #: A5618

Department of Administration
 Procurement Management
 Design, Construction & Compliance
 800 SW Jackson, Suite 700
 Topeka, Kansas 66612-1216
 Phone 785-296-8899

KANSAS STATE UNIVERSITY
 VETERINARY HEALTH CENTER
EQUINE PERFORMANCE TESTING CENTER
 1810 DENISON AVENUE, MANHATTAN, KANSAS 66502
 BUILDING NUMBER: 36700-00235
 DATE: FEBRUARY 2, 2015

SITE GRADING PLAN
 A-012593
 C001
 SCHEMATIC DESIGN



GH2 | GRALLA EQUINE ARCHITECTS
 320 South Bessey, Suite 1600
 Topeka, KS 66604
 T: 918.587.6168 GH2.COM
 A SPECIALTY PRACTICE OF GR2 ARCHITECTS, LLC

PEC
 PROFESSIONAL ENGINEERING CONSULTANTS, P.A.
 303 South Topoka
 Wichita, KS 67202
 T: 316.262.2091
 PEC1.COM

Veterinary Health Center
 AT KANSAS STATE UNIVERSITY

INTERIM REVIEW ONLY
 DOCUMENT INCOMPLETE.
 NOT INTENDED FOR PERMIT,
 BIDDING OR CONSTRUCTION
 ARCHITECT: MICHAEL HALL
 LICENSE #: AS618

Department of Administration
 Procurement Management
 Design, Construction & Compliance
 800 SW Jackson, Suite 700
 Topeka, Kansas 66612-1216
 Phone 785-296-8899

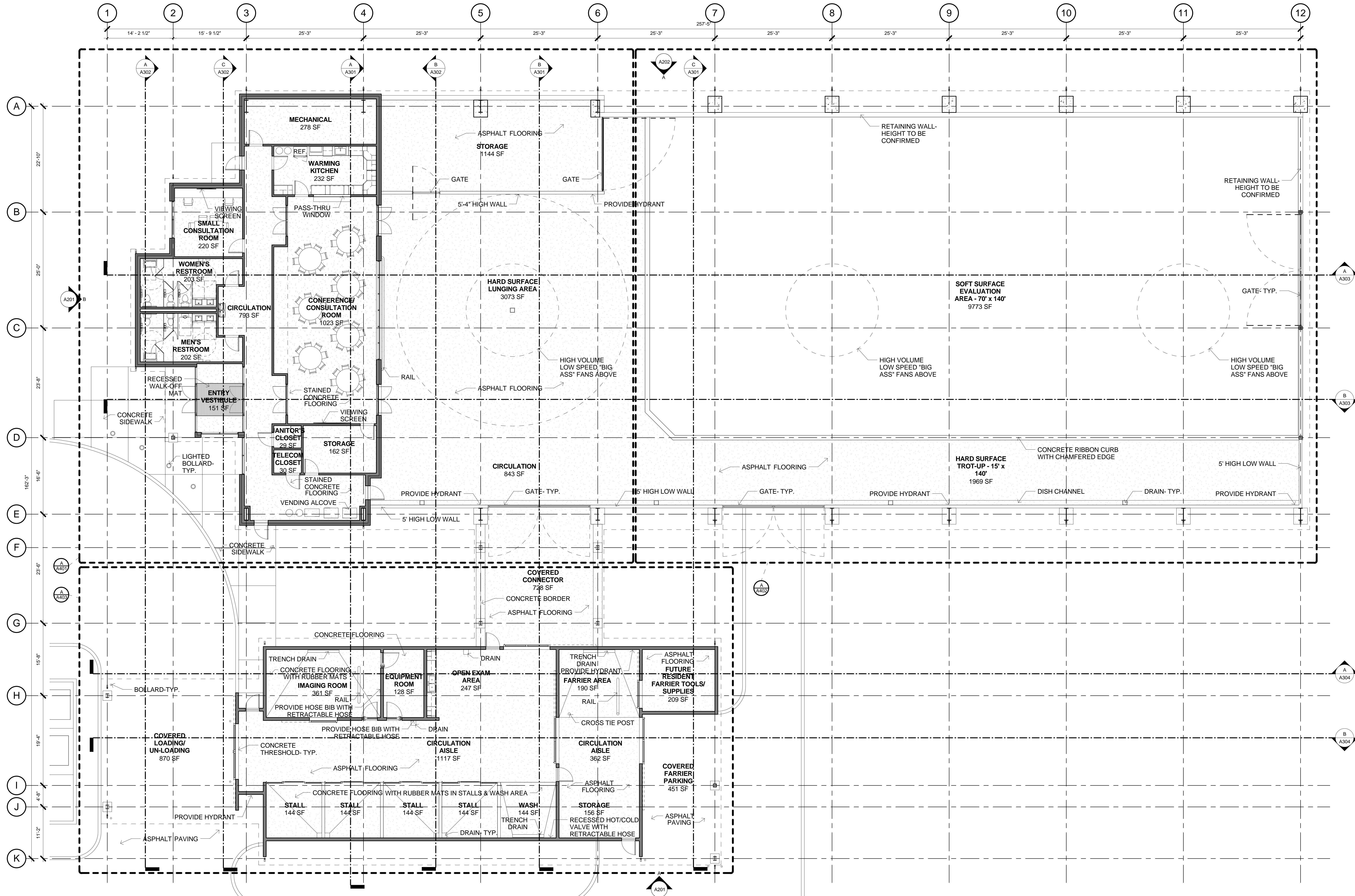
KANSAS STATE UNIVERSITY
 VETERINARY HEALTH CENTER
EQUINE PERFORMANCE TESTING CENTER
 1810 DENISON AVENUE, MANHATTAN, KANSAS 66502
 BUILDING NUMBER: 36700-00235
 DATE: FEBRUARY 2, 2015
 DRAWN BY: KBA

ARCHITECTURAL SITE PLAN

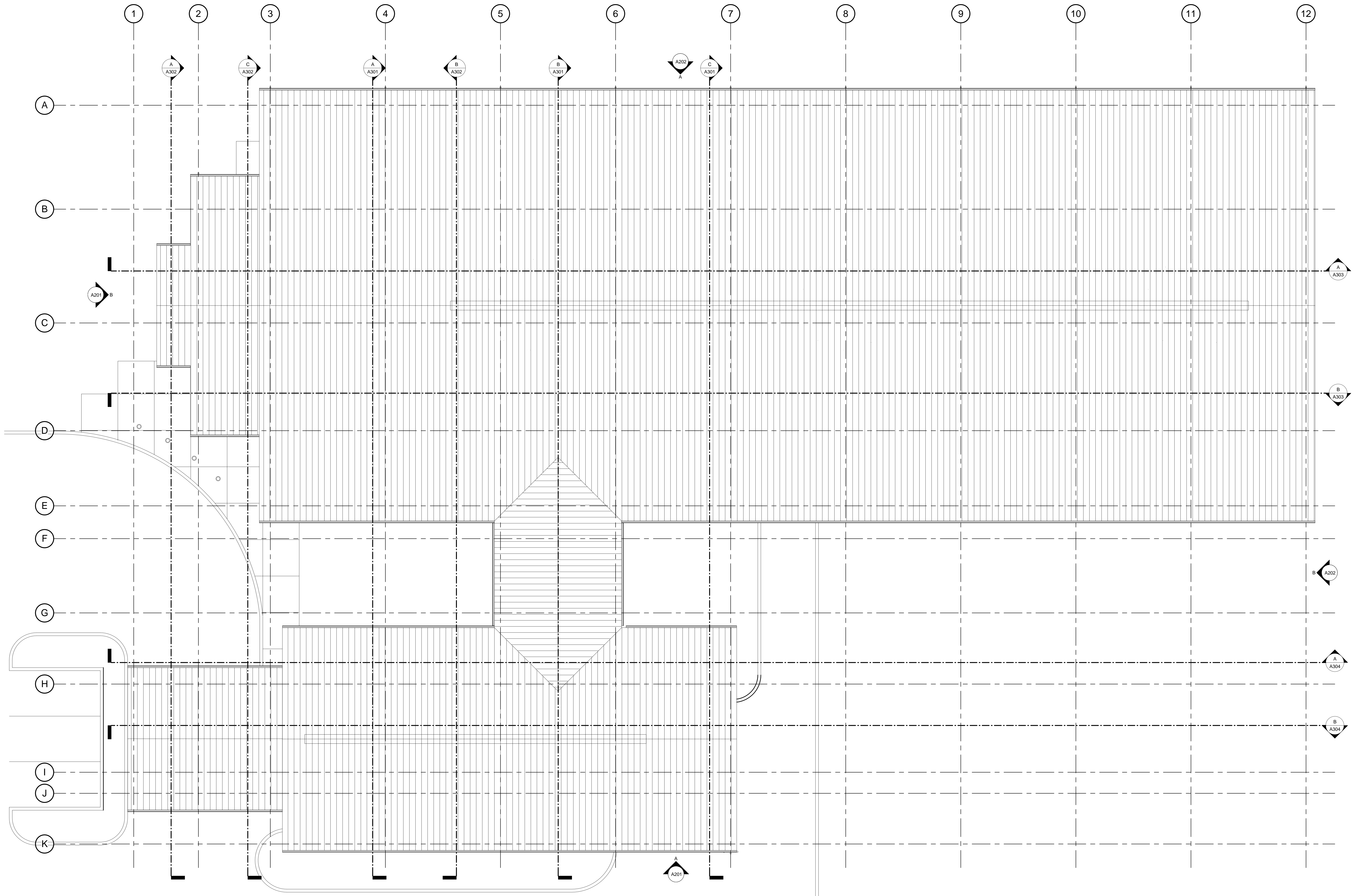
A-012593

AS101

SCHEMATIC DESIGN



A OVERALL FLOOR PLAN
 1/8" = 1'-0"
 NORTH
 0 2 4 8 16 FEET



A ROOF PLAN
 1/8" = 1'-0"
 NORTH
 0 2 4 8 16 FEET

GH2 ARCHITECTS
 GRALLA EQUINE
 320 South Bessey, Suite 1600
 Wichita, KS 67202
 T: 918.587.6168 GH2.COM
 A SPECIALTY PRACTICE OF GH2 ARCHITECTS, LLC

PEC
 PROFESSIONAL ENGINEERING CONSULTANTS, P.A.
 303 South Topoka
 Wichita, KS 67202
 T: 918.262.2091
 PEC1.COM

Veterinary Health Center
 AT KANSAS STATE UNIVERSITY

INTERIM REVIEW
 ONLY

DOCUMENT INCOMPLETE.
 NOT INTENDED FOR PERMIT,
 BIDDING OR CONSTRUCTION

ARCHITECT: MICHAEL HALL
 LICENSE #: A5618

Department of Administration
 Procurement Management
 Design, Construction & Compliance
 800 SW Jackson, Suite 700
 Topeka, Kansas 66612-1216
 Phone 785-296-8899

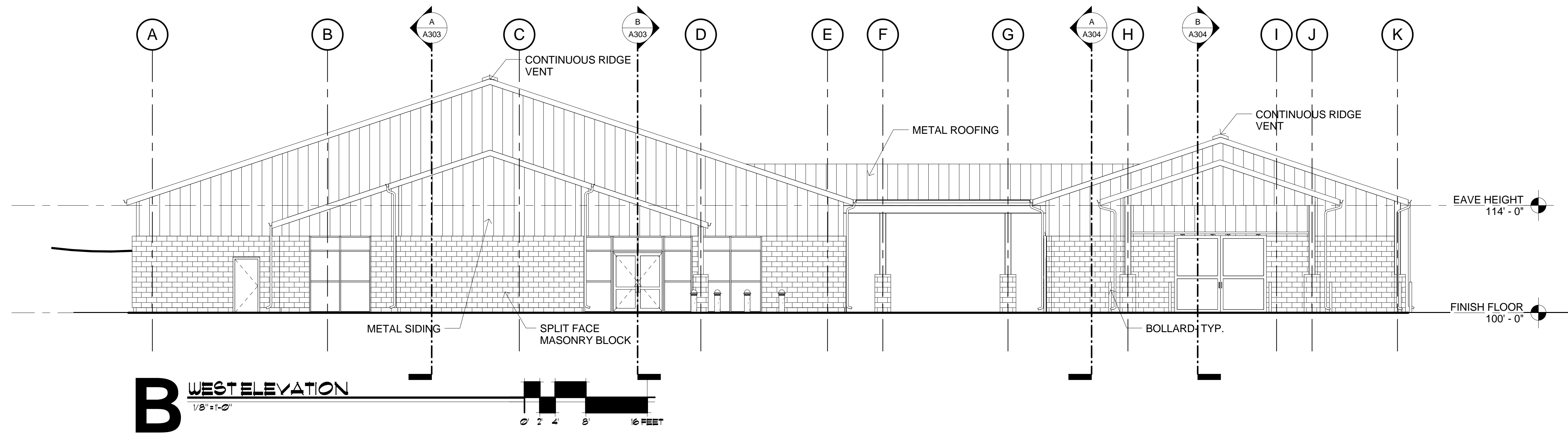
KANSAS STATE UNIVERSITY
 VETERINARY HEALTH CENTER
EQUINE PERFORMANCE TESTING CENTER
 1810 DENISON AVENUE, MANHATTAN, KANSAS 66502
 BUILDING NUMBER: 36700-00235
 DATE: FEBRUARY 2, 2015
 DRAWN BY: KBA

ROOF PLAN

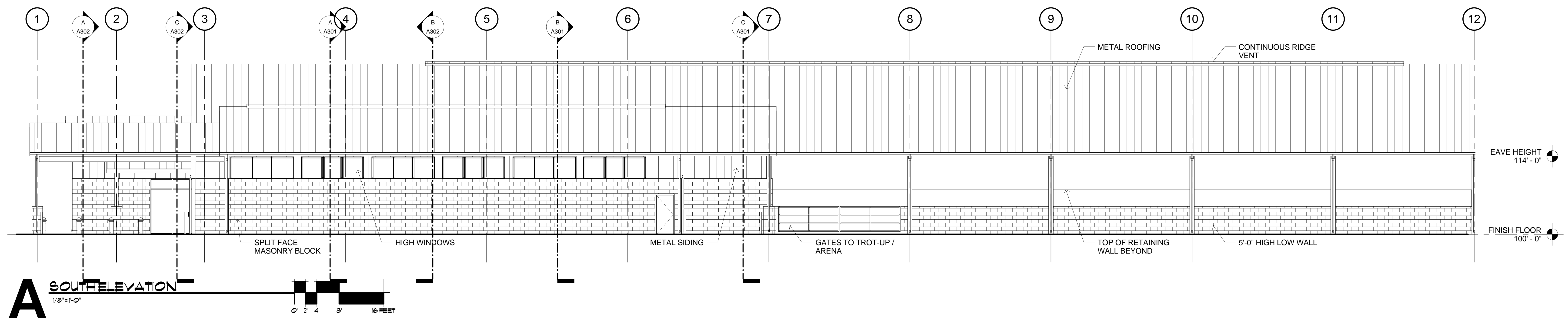
A-012593

A110

SCHEMATIC
 DESIGN



B WEST ELEVATION
1/8" = 1'-0"



A SOUTH ELEVATION
1/8" = 1'-0"

INTERIM REVIEW ONLY

DOCUMENT INCOMPLETE.
NOT INTENDED FOR PERMIT,
BIDDING OR CONSTRUCTION

ARCHITECT: MICHAEL HALL
LICENSE #: AS618

Department of Administration
Procurement Management
Design, Construction & Compliance
800 SW Jackson, Suite 700
Topeka, Kansas 66612-1216
Phone 785-296-8899

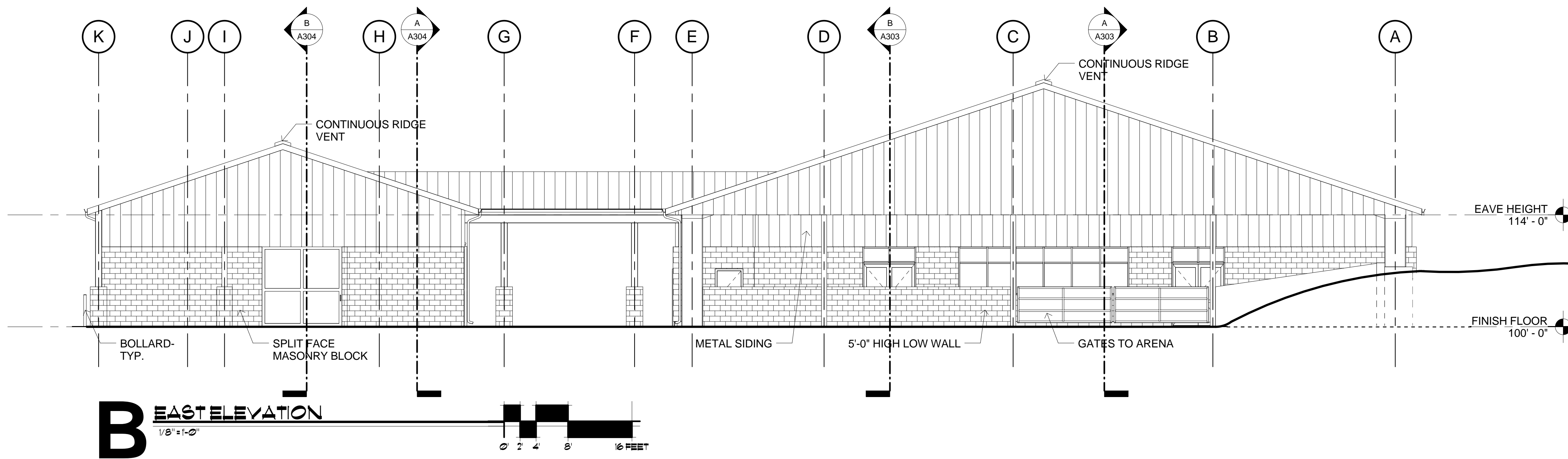
KANSAS STATE UNIVERSITY
VETERINARY HEALTH CENTER
EQUINE PERFORMANCE TESTING CENTER
1810 DENISON AVENUE, MANHATTAN, KANSAS 66502
BUILDING NUMBER: 36700-00235
DATE: FEBRUARY 2, 2015
DRAWN BY: KBA

EXTERIOR ELEVATIONS

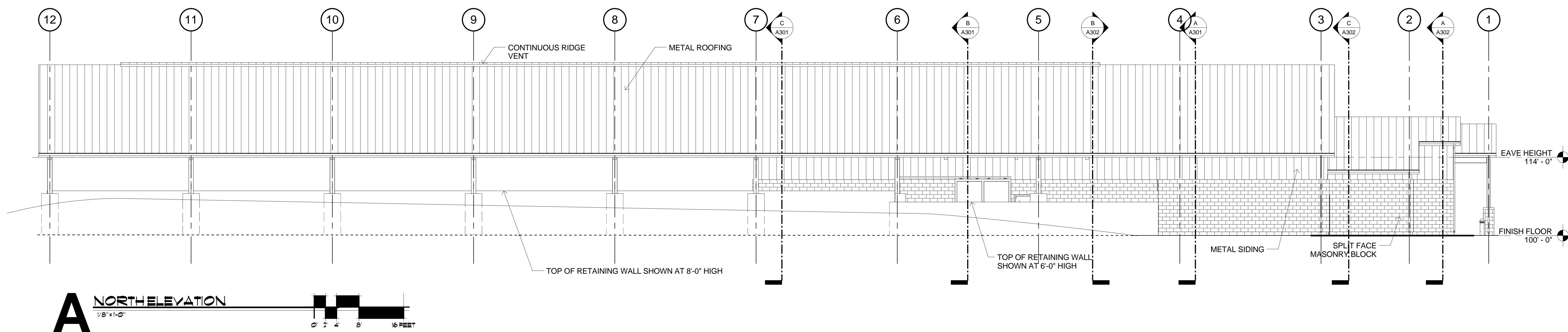
A-012593

A201

SCHEMATIC DESIGN



B EAST ELEVATION
1/8" = 1'-0"



A NORTHELEVATION
1/8" = 1'-0"

GH2 ARCHITECTS
GRALLA EQUINE
320 South Bessey, Suite 1600
Topeka, KS 67202
T: 918.587.6168 GH2.COM
A SPECIALTY PRACTICE OF GH2 ARCHITECTS, LLC

PEC
PROFESSIONAL ENGINEERING CONSULTANTS, P.A.
303 South Topoka
Wichita, KS 67202
T: 316.262.2091
PEC1.COM

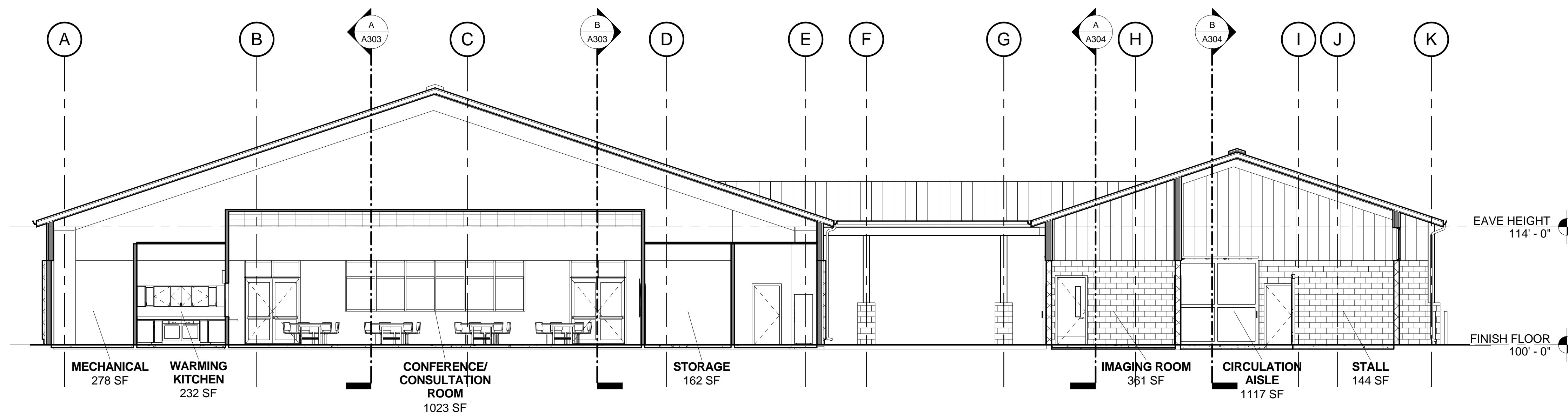
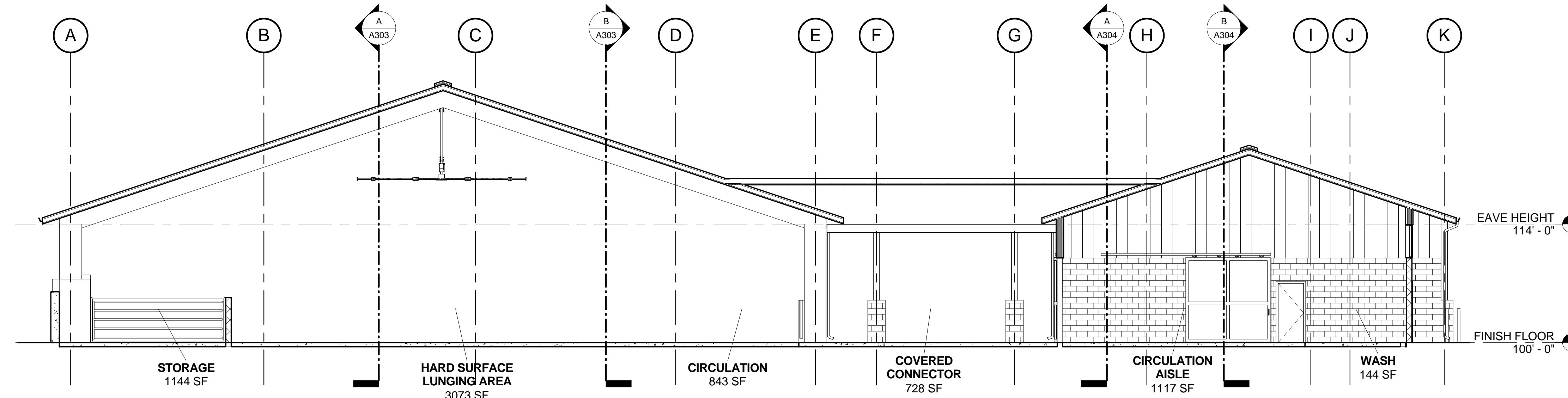
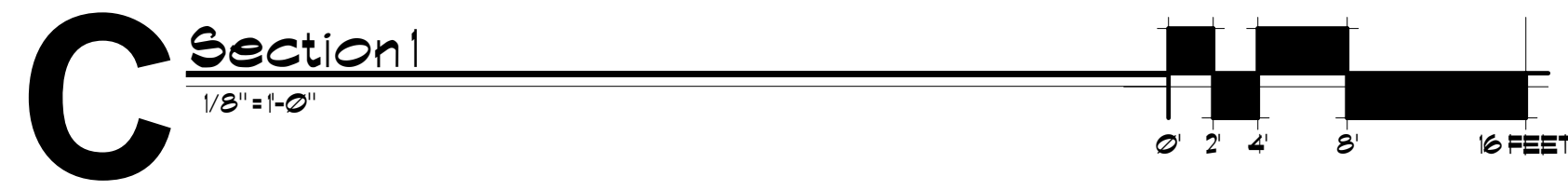
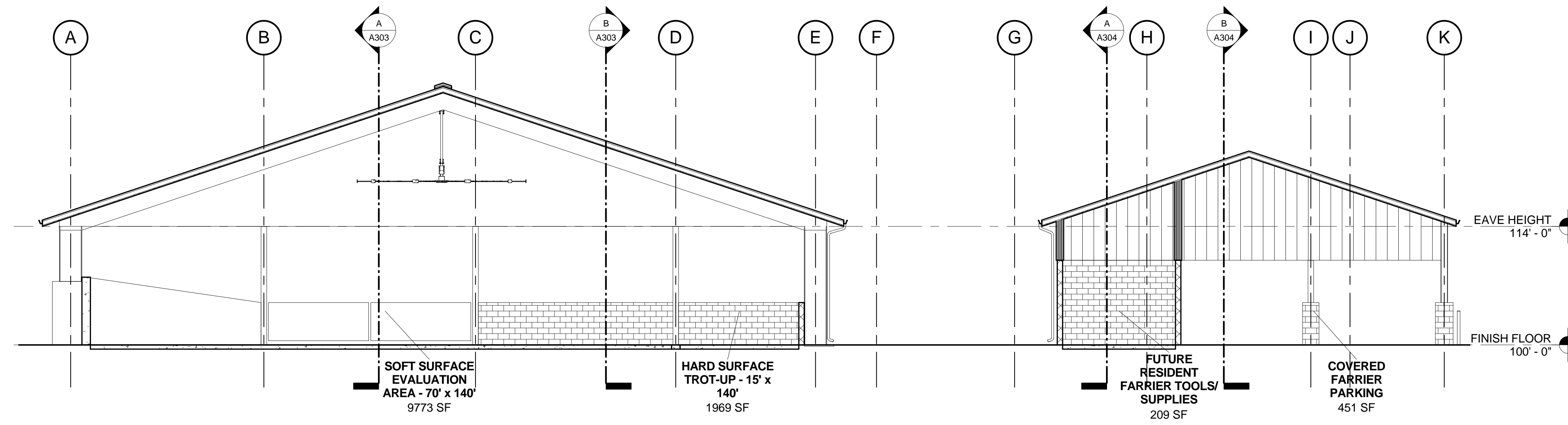
Veterinary Health Center
AT KANSAS STATE UNIVERSITY

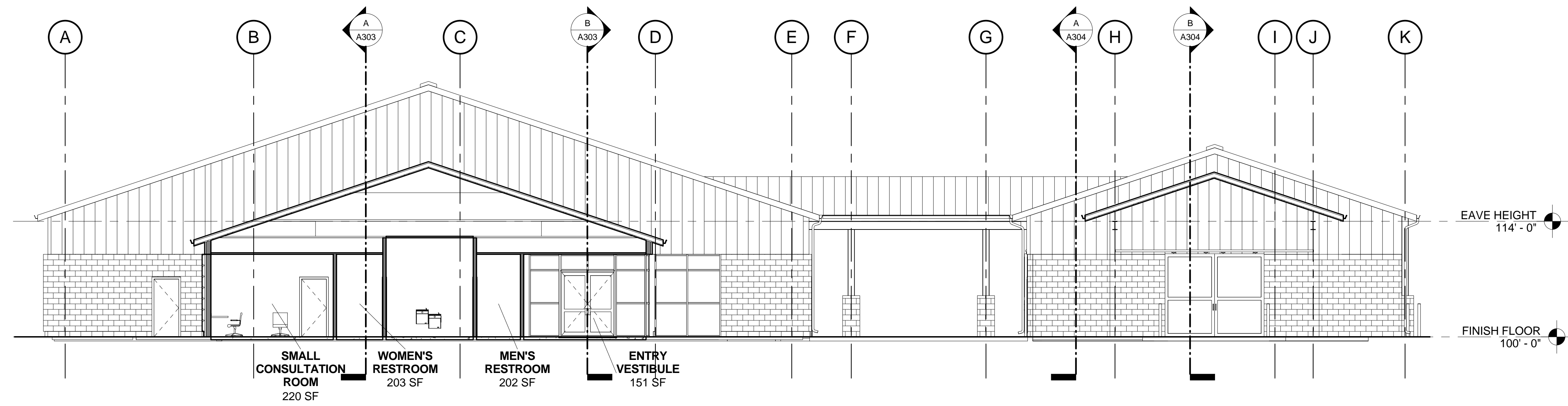
INTERIM REVIEW ONLY
DOCUMENT INCOMPLETE.
NOT INTENDED FOR PERMIT,
BIDDING OR CONSTRUCTION
ARCHITECT: MICHAEL HALL
LICENSE #: AS618

Department of Administration
Procurement Management
Design, Construction & Compliance
800 SW Jackson, Suite 700
Topeka, Kansas 66612-1216
Phone 785-296-8899

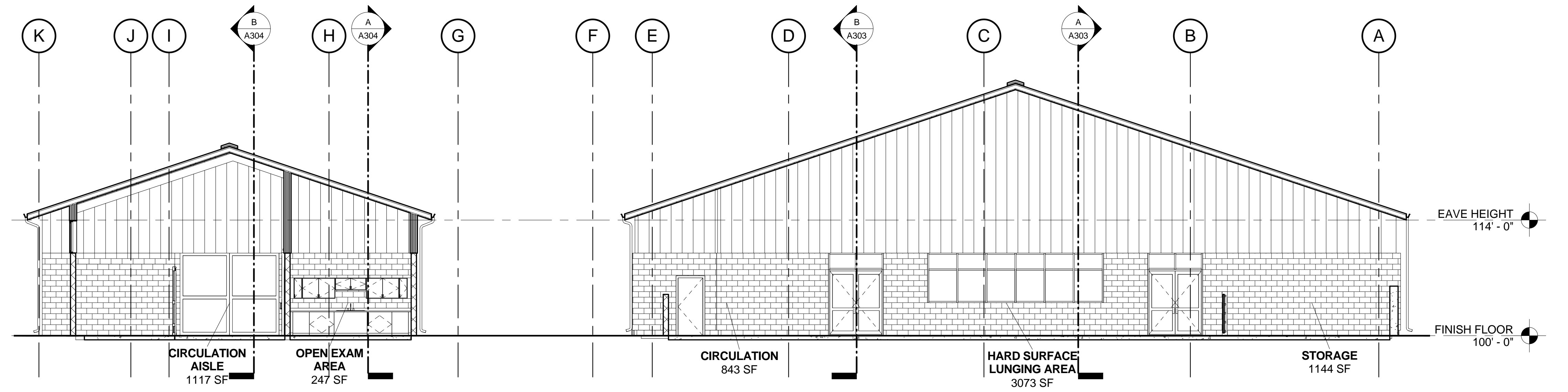
KANSAS STATE UNIVERSITY
VETERINARY HEALTH CENTER
EQUINE PERFORMANCE TESTING CENTER
1810 DENISON AVENUE, MANHATTAN, KANSAS 66502
BUILDING NUMBER: 36700-00235
DATE: FEBRUARY 2, 2015
DRAWN BY: KBA

EXTERIOR ELEVATIONS
A-012593
A202
SCHEMATIC DESIGN

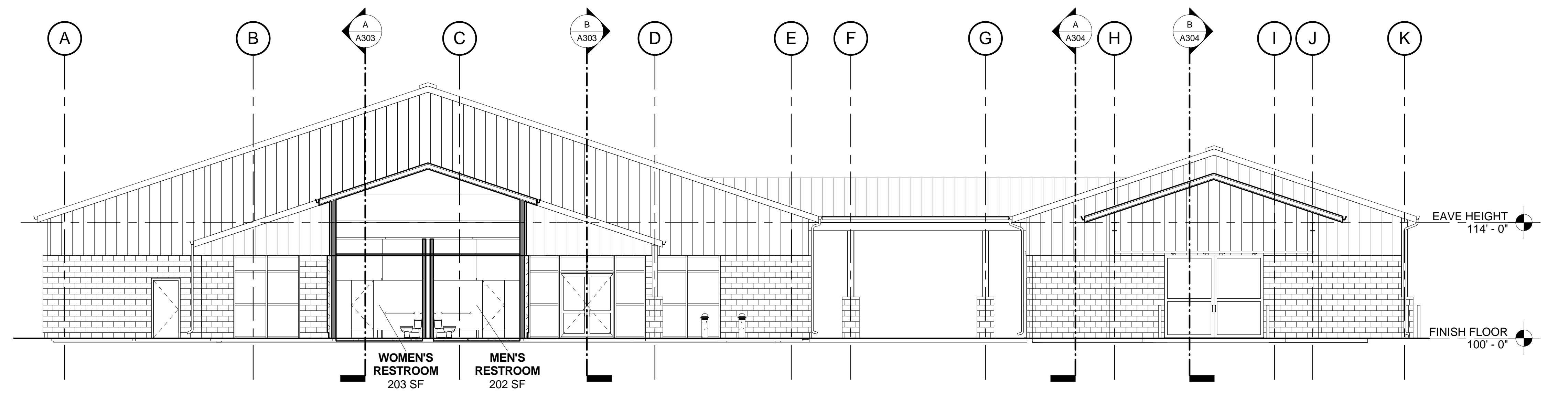




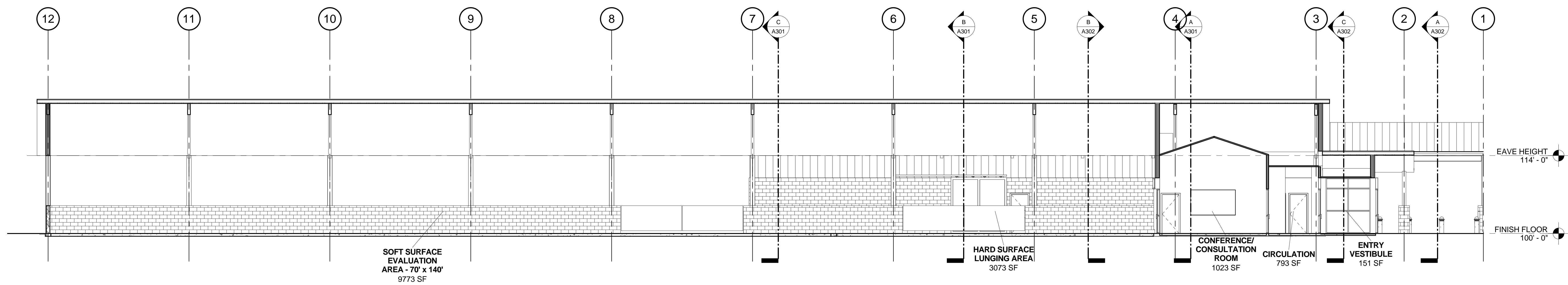
C Section 4
1/8"=1'-0"
0 2 4 8 16 FEET



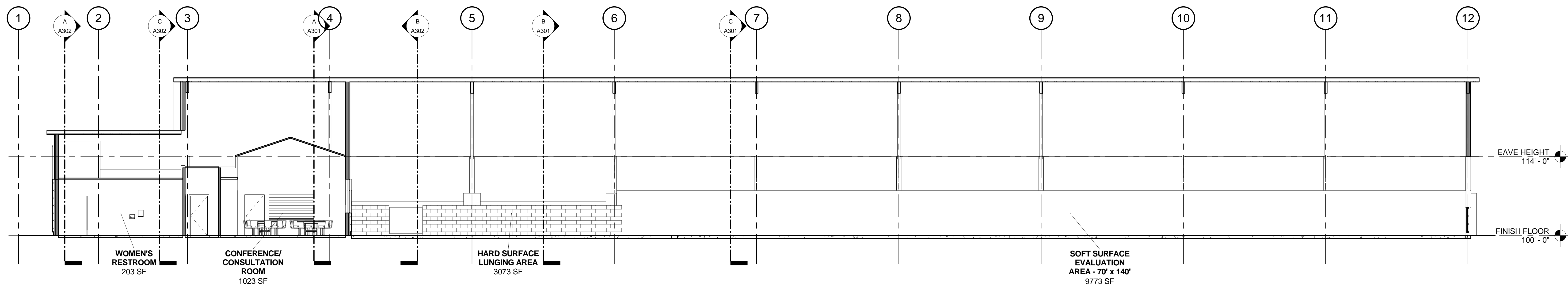
B Section 5
1/8"=1'-0"
0 2 4 8 16 FEET



A Section 6
1/8"=1'-0"
0 2 4 8 16 FEET



B Section 1
1/8"=1'-0"
0 2 4 8 16 FEET



A Section 8
1/8"=1'-0"
0 2 4 8 16 FEET

INTERIM REVIEW ONLY

DOCUMENT INCOMPLETE.
NOT INTENDED FOR PERMIT,
BIDDING OR CONSTRUCTION

ARCHITECT: MICHAEL HALL
LICENSE # : A5618

Department of Administration
Procurement Management
Design, Construction & Compliance
800 SW Jackson, Suite 700
Topeka, Kansas 66612-1216
Phone 785-296-8899

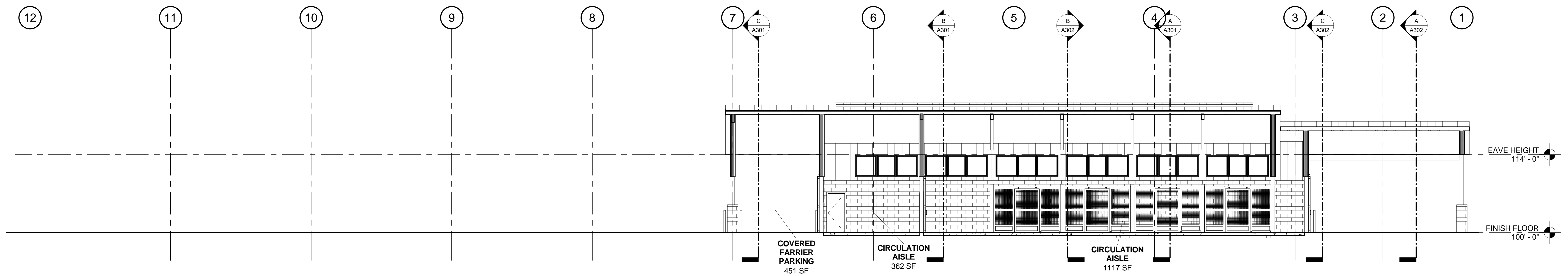
KANSAS STATE UNIVERSITY
VETERINARY HEALTH CENTER
EQUINE PERFORMANCE TESTING CENTER
1810 DENISON AVENUE, MANHATTAN, KANSAS 66502
BUILDING NUMBER: 36700-00235
DATE: FEBRUARY 2, 2015
DRAWN BY: KBA

BUILDING SECTIONS

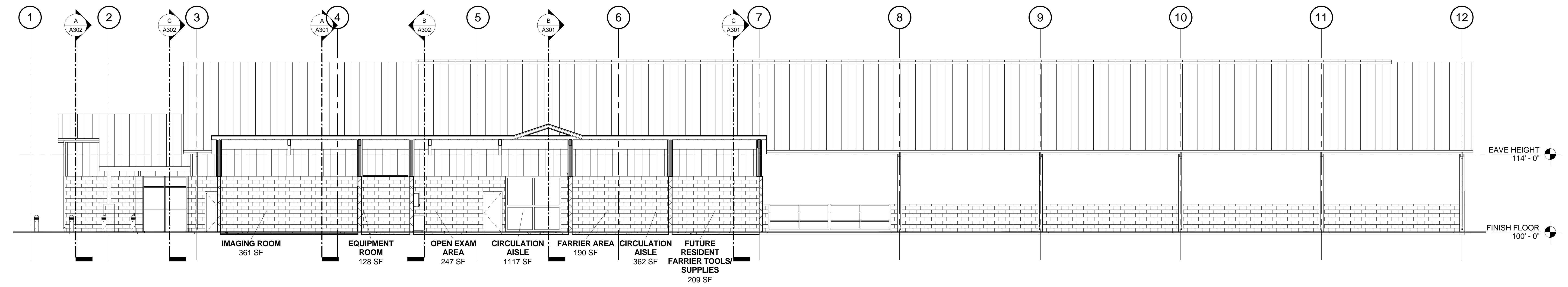
A-012593

A303

SCHEMATIC DESIGN



B Section 9
1/8" = 1'-0"
0 2 4 8 16 FEET



A Section 10
1/8" = 1'-0"
0 2 4 8 16 FEET

INTERIM REVIEW ONLY

DOCUMENT INCOMPLETE.
NOT INTENDED FOR PERMIT,
BIDDING OR CONSTRUCTION

ARCHITECT: MICHAEL HALL
LICENSE # : A5618

Department of Administration
Procurement Management
Design, Construction & Compliance
800 SW Jackson, Suite 700
Topeka, Kansas 66612-1216
Phone 785-296-8899

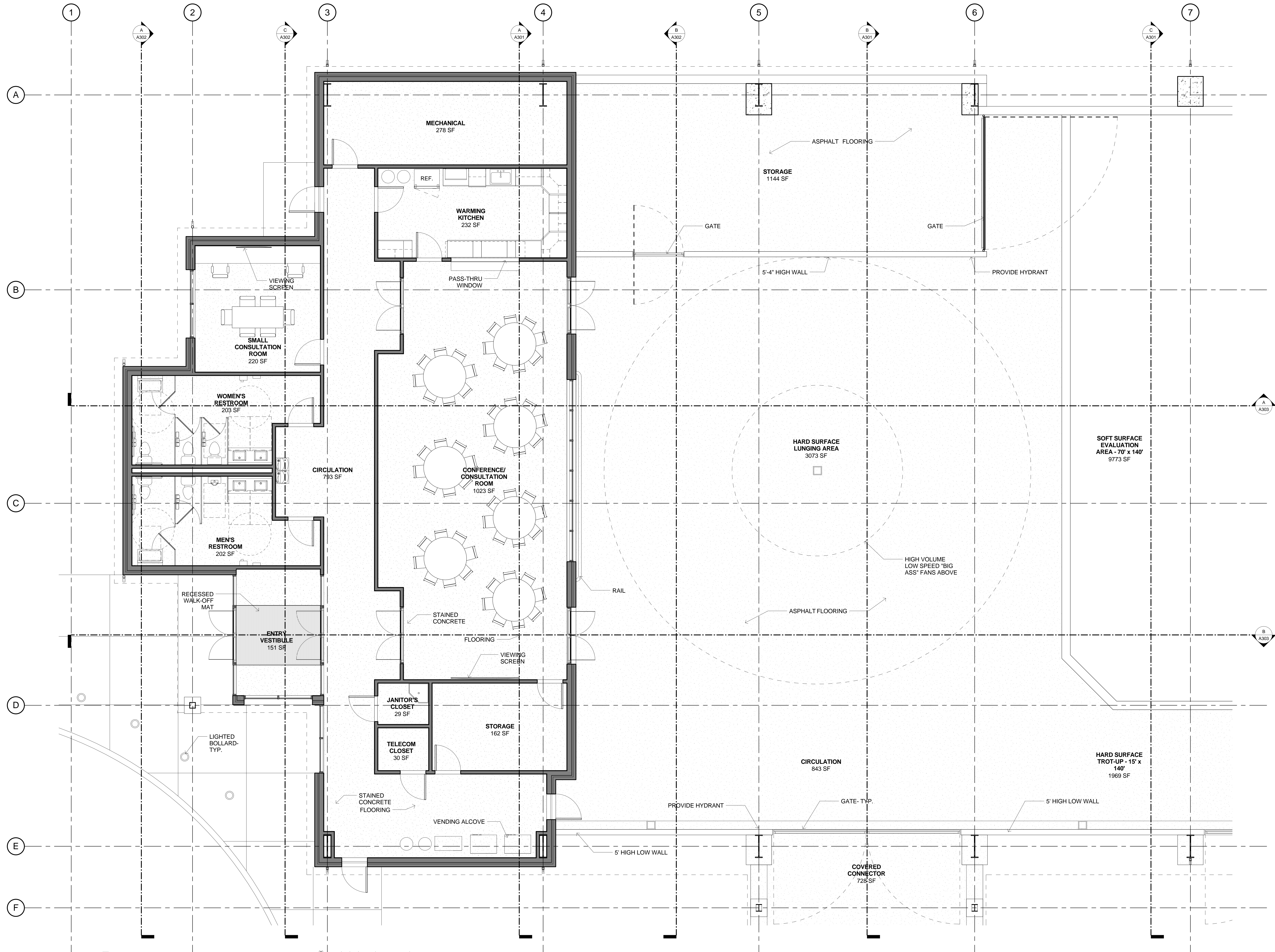
KANSAS STATE UNIVERSITY
VETERINARY HEALTH CENTER
EQUINE PERFORMANCE TESTING CENTER
1810 DENISON AVENUE, MANHATTAN, KANSAS 66502
BUILDING NUMBER: 36700-00235
DATE: FEBRUARY 2, 2015
DRAWN BY: KBA

BUILDING SECTIONS

A-012593

A304

SCHEMATIC DESIGN



A ENLARGED FLOOR PLAN
 1/4" = 1'-0"
 NORTH
 0 1 2 4 8 FEET

GH2 ARCHITECTS
 320 South Bessey, Suite 1600
 Topeka, KS 67202
 T: 918.587.6168 GH2.COM
 A SPECIALTY PRACTICE OF GR2 ARCHITECTS, LLC

PEC
 PROFESSIONAL ENGINEERING CONSULTANTS, P.A.
 303 South Topoka
 Wichita, KS 67202
 T: 316.262.2091
 PEC1.COM

Veterinary Health Center
 AT KANSAS STATE UNIVERSITY

INTERIM REVIEW ONLY
 DOCUMENT INCOMPLETE.
 NOT INTENDED FOR PERMIT,
 BIDDING OR CONSTRUCTION.
 ARCHITECT: MICHAEL HALL
 LICENSE #: A5618

Department of Administration
 Procurement Management
 Design, Construction & Compliance
 800 SW Jackson, Suite 700
 Topeka, Kansas 66612-1216
 Phone 785-296-8899

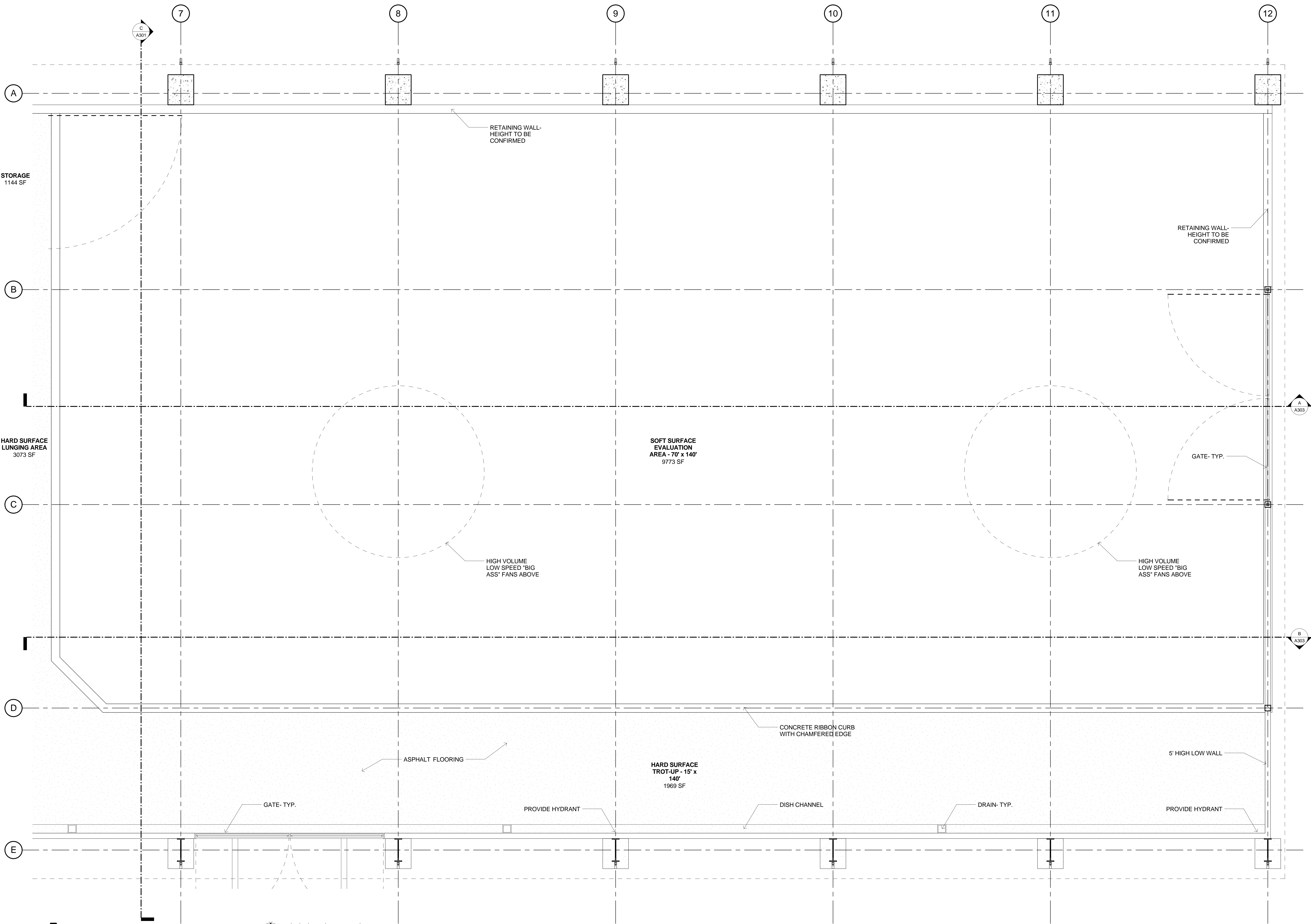
KANSAS STATE UNIVERSITY
 VETERINARY HEALTH CENTER
EQUINE PERFORMANCE TESTING CENTER
 1810 DENISON AVENUE, MANHATTAN, KANSAS 66502
 BUILDING NUMBER: 36700-00235
 DATE: FEBRUARY 2, 2015
 DRAWN BY: KBA

ENLARGED FLOOR PLAN

A-012593

A401

SCHEMATIC DESIGN



STORAGE
1144 SF

HARD SURFACE
LUNGING AREA
3073 SF

SOFT SURFACE
EVALUATION
AREA - 70' x 140'
9773 SF

HARD SURFACE
TROT-UP - 15' x
140'
1969 SF

RETAINING WALL-
HEIGHT TO BE
CONFIRMED

RETAINING WALL-
HEIGHT TO BE
CONFIRMED

HIGH VOLUME
LOW SPEED "BIG
ASS" FANS ABOVE

HIGH VOLUME
LOW SPEED "BIG
ASS" FANS ABOVE

ASPHALT FLOORING

CONCRETE RIBBON CURB
WITH CHAMFERED EDGE

5' HIGH LOW WALL

GATE- TYP.

PROVIDE HYDRANT

DISH CHANNEL

DRAIN- TYP.

PROVIDE HYDRANT



GH2 ARCHITECTS
320 South Bessey, Suite 1600
Topeka, KS 67202
T: 913.587.6168 GH2.COM
A SPECIALTY PRACTICE OF GR2 ARCHITECTS, LLC

PEC
PROFESSIONAL ENGINEERING CONSULTANTS, P.A.
303 South Topoka
Wichita, KS 67202
T: 316.262.2091
PEC7.COM

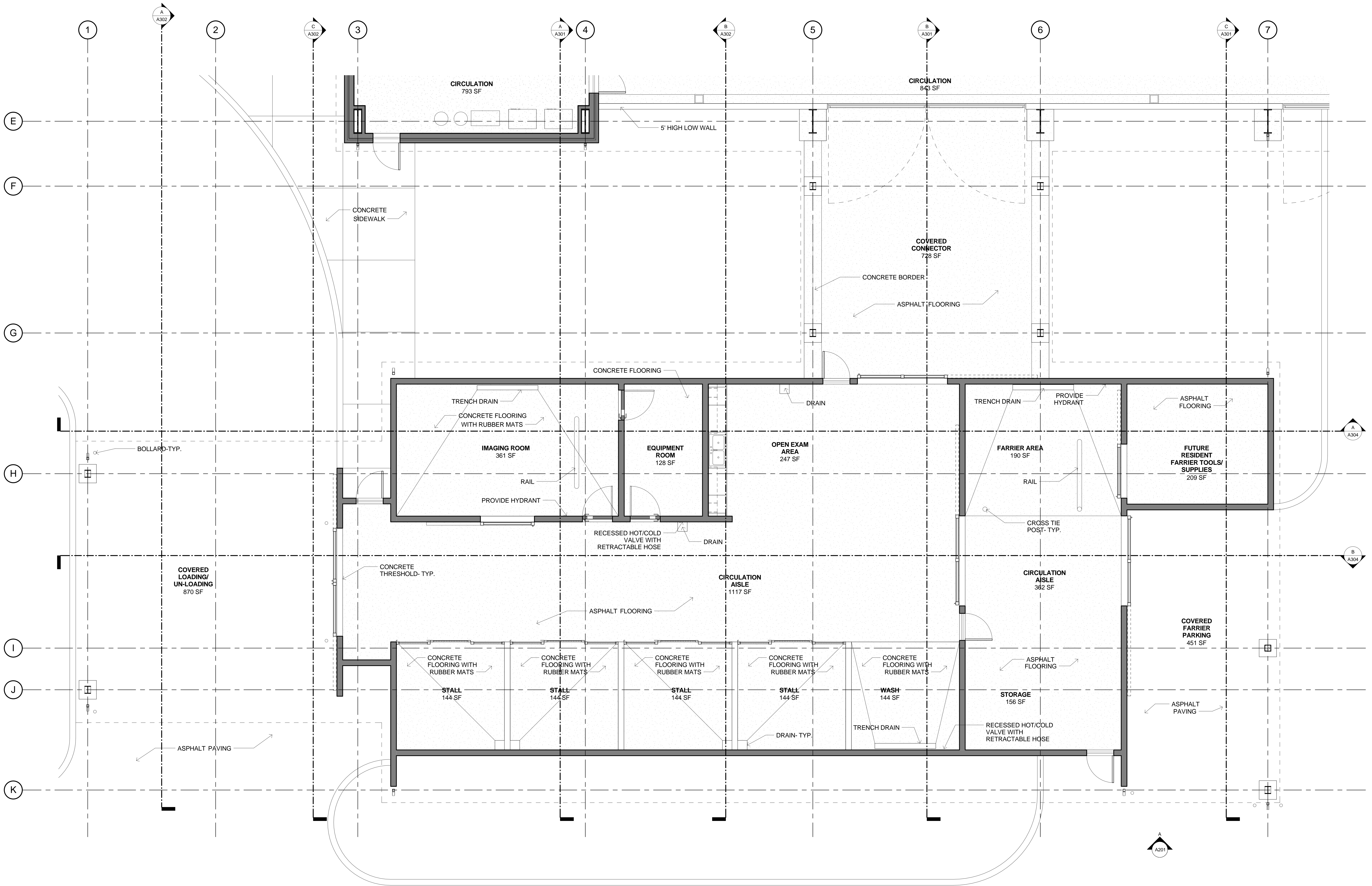
Veterinary Health Center
AT KANSAS STATE UNIVERSITY

INTERIM REVIEW ONLY
DOCUMENT INCOMPLETE.
NOT INTENDED FOR PERMIT,
BIDDING OR CONSTRUCTION
ARCHITECT: MICHAEL HALL
LICENSE #: A5618

Department of Administration
Procurement Management
Design, Construction & Compliance
800 SW Jackson, Suite 700
Topeka, Kansas 66612-1216
Phone 785-296-8899

KANSAS STATE UNIVERSITY
VETERINARY HEALTH CENTER
EQUINE PERFORMANCE TESTING CENTER
1810 DENISON AVENUE, MANHATTAN, KANSAS 66502
BUILDING NUMBER: 36700-00235
DATE: FEBRUARY 2, 2015
DRAWN BY: KBA

ENLARGED
FLOOR PLAN
A-012593
A402
SCHEMATIC
DESIGN



A ENLARGED FLOOR PLAN
 1/4" = 1'-0"
 NORTH
 0 1 2 4 8 FEET

GRALLA EQUINE ARCHITECTS
 GH2 ARCHITECTS
 320 South Bessey, Suite 1600
 Wichita, KS 67202
 T: 918.587.6168 GH2.COM
 A SPECIALTY PRACTICE OF GR2 ARCHITECTS, LLC

PEC
 PROFESSIONAL ENGINEERING CONSULTANTS, P.A.
 303 South Topoka
 Wichita, KS 67202
 T: 316.262.0991
 PEC1.COM

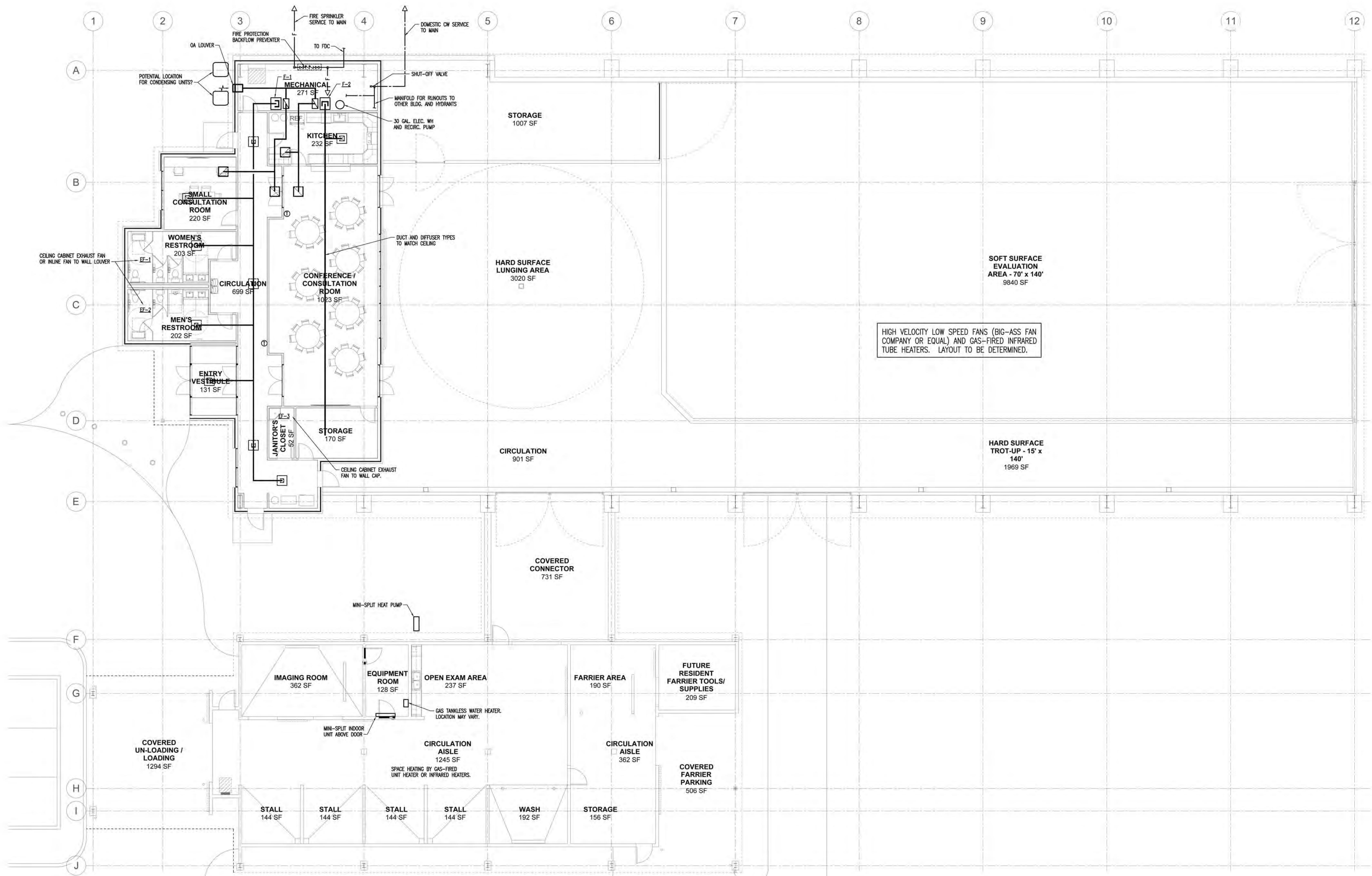
Veterinary Health Center
 AT KANSAS STATE UNIVERSITY

INTERIM REVIEW ONLY
 DOCUMENT INCOMPLETE.
 NOT INTENDED FOR PERMIT,
 BIDDING OR CONSTRUCTION.
 ARCHITECT: MICHAEL HALL
 LICENSE #: A5618

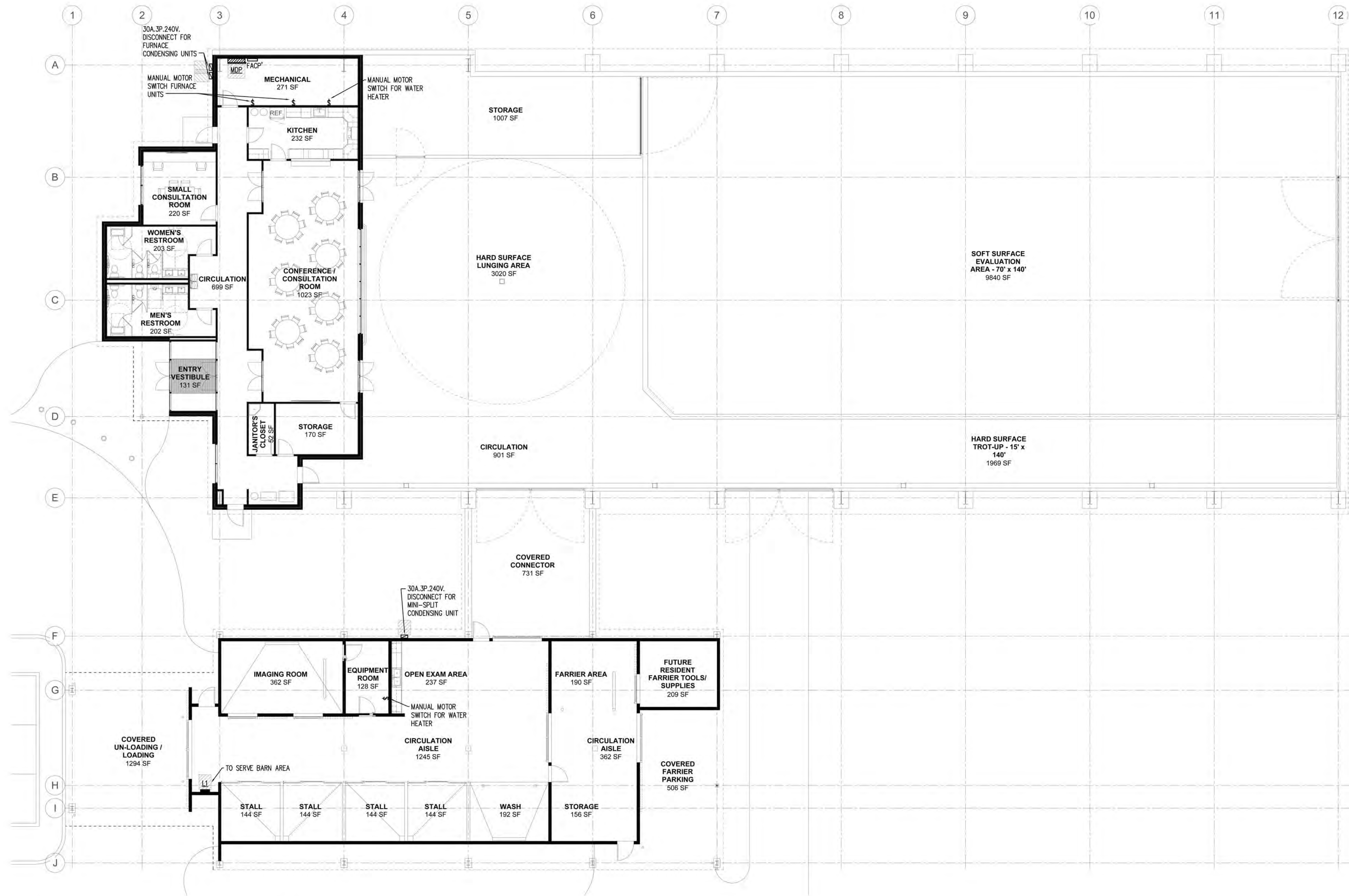
Department of Administration
 Procurement Management
 Design, Construction & Compliance
 800 SW Jackson, Suite 700
 Topeka, Kansas 66612-1216
 Phone 785-296-8899

KANSAS STATE UNIVERSITY
 VETERINARY HEALTH CENTER
EQUINE PERFORMANCE TESTING CENTER
 1810 DENISON AVENUE, MANHATTAN, KANSAS 66502
 BUILDING NUMBER: 36700-00235
 DATE: FEBRUARY 2, 2015
 DRAWN BY: KBA

ENLARGED FLOOR PLAN
 A-012593
 A403
 SCHEMATIC DESIGN



A MECHANICAL EQUIPMENT LAYOUT
 1/8" = 1'-0"
 NORTH
 0 2 4 8 16 FEET



A ELECTRICAL EQUIPMENT LAYOUT
 1/8" = 1'-0"
 NORTH 0 2 4 8 16 FEET

GH2 ARCHITECTS
 GRALLA EQUINE ARCHITECTS
 320 South Bessey, Suite 1600
 Wichita, KS 67202
 T: 918.587.6168 GH2.COM
 A SPECIALTY PRACTICE OF GR2 ARCHITECTS, LLC

PEC
 PROFESSIONAL ENGINEERING CONSULTANTS, P.C.
 303 South Topoka
 Wichita, KS 67202
 T: 918.292.2091
 PEC1.COM

Veterinary Health Center
 BY KANSAS STATE UNIVERSITY

INTERIM REVIEW ONLY
 DOCUMENT INCOMPLETE.
 NOT INTENDED FOR PERMIT,
 BIDDING OR CONSTRUCTION
 ARCHITECT: MICHAEL HALL
 LICENSE #: A5618

Department of Administration
 Procurement Management
 Design, Construction & Compliance
 800 SW Jackson, Suite 700
 Topeka, Kansas 66612-1216
 Phone 785-296-8899

KANSAS STATE UNIVERSITY
 VETERINARY HEALTH CENTER
EQUINE PERFORMANCE TESTING CENTER
 1810 DENISON AVENUE, MANHATTAN, KANSAS 66502
 BUILDING NUMBER: 36700-00235
 DATE: FEBRUARY 2, 2015
 DRAWN BY: KBA

ELECTRICAL EQUIPMENT
 A-012593
 E001
 SCHEMATIC DESIGN