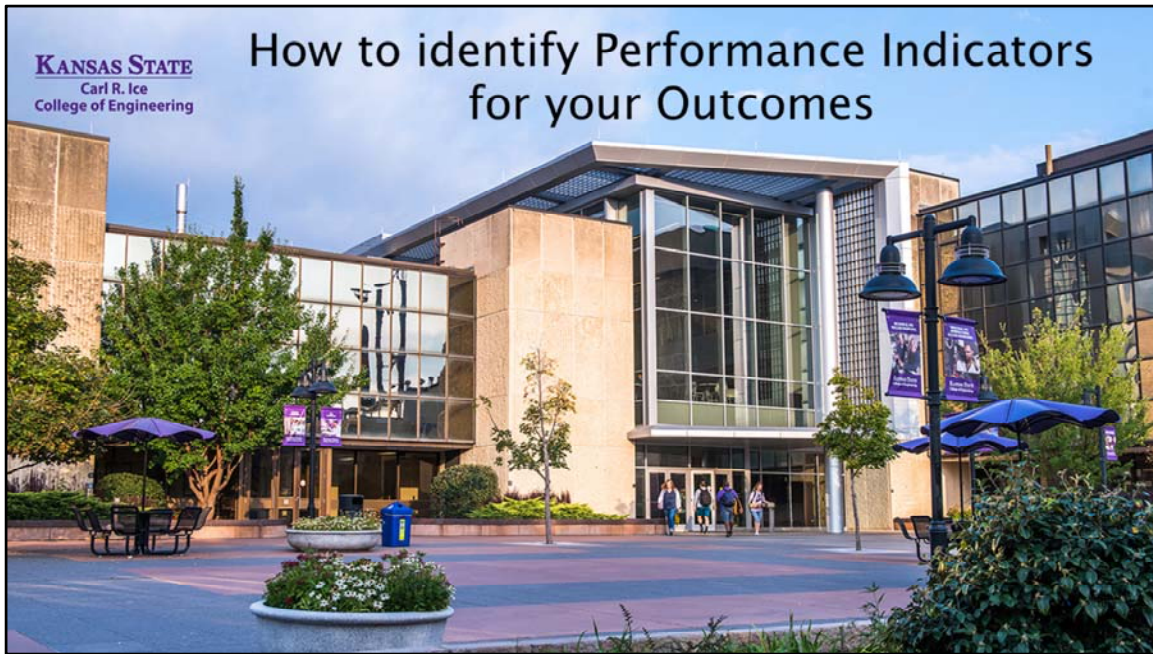


Video #1 - How to identify Performance Indicators for your outcomes

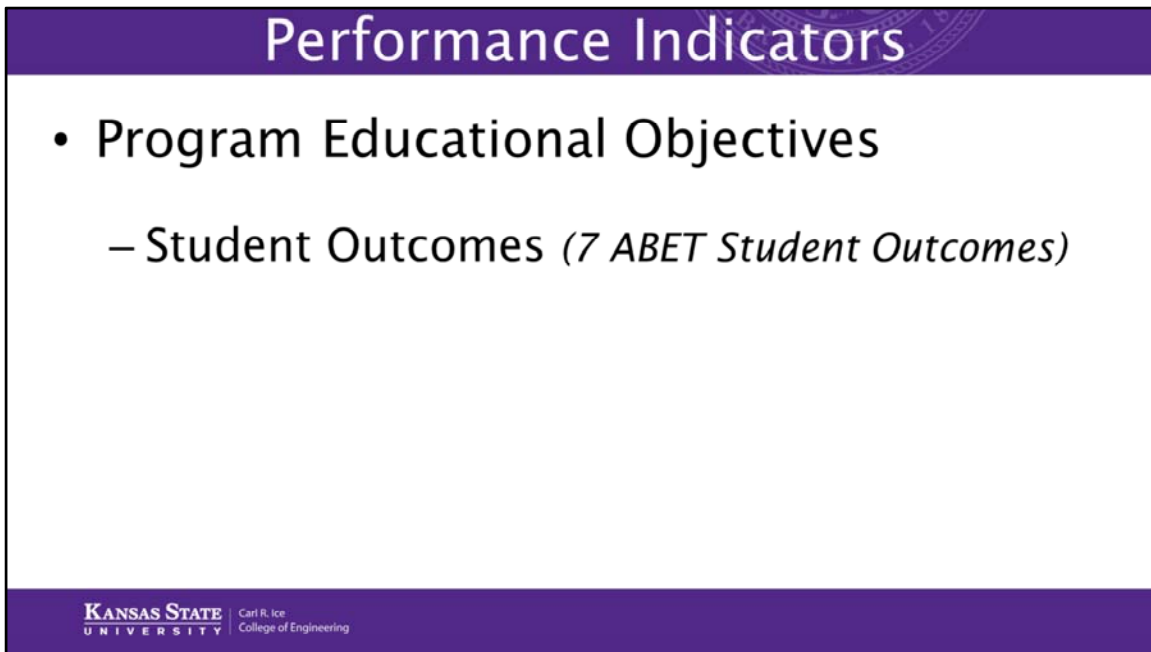


**Performance Indicators**

- Program Educational Objectives

**KANSAS STATE UNIVERSITY** Carl R. Ice  
College of Engineering

In order to discuss Performance Indicators, we must first begin considering Program Educational Objectives. Program Educational Objectives are broad statements that generally categorize what graduates are to have learned by the completion of an academic program.



## Performance Indicators

- Program Educational Objectives
  - Student Outcomes (*7 ABET Student Outcomes*)


**KANSAS STATE UNIVERSITY** Carl R. Ice College of Engineering

Within each category of Program Educational Objective, Student Outcomes clarify the general skills, knowledge, and behaviors that students are expected demonstrate by the time of graduation. These outcome begin with, but are not limited to the seven ABET Student Outcomes. Some programs provide learning expectations beyond what is defined by ABET as an example of what makes the program unique and valuable.

## Performance Indicators

- Program Educational Objectives
  - Student Outcomes (*7 ABET Student Outcomes*)
    - Performance Indicators (*assessed criteria*)

Guides the task chosen to assess student performance



**KANSAS STATE UNIVERSITY** Carl R. Ice College of Engineering

Student Outcomes are assessed using Performance Indicators. Performance indicators are the criteria used to measure student achievement. They guide decisions on which task which task is used for students demonstrate the quality of achievement. Another way of describing Performance Indicators is the specific item that will be measured and assessed.

## Performance Indicators:

Specific and measurable actions demonstrated by student


- *Analyzing:* Determine the type of strain by examining the loading conditioning and computer the shear stresses developed due to transverse loading and/or torsion.

Performance Indicators are specific, measurable demonstrations of achievement identifying the performances required to meet the outcome and against which other levels of achievement are measured and confirmable through evidence.

There will certainly be more than one Performance Indicator for each Student Outcome because there are usually more than one defining component of a Student Outcome.


Video #1 - How to identify Performance Indicators for your outcomes

1.1. Identify the problems and applicable theories and concepts.				
Criteria	Unacceptable (1)	Needs Improvement (2)	Meets (3)	Exceeds (4)
1.1. Identify the problems and applicable theories and concepts.	Fails to identify the problems and applicable theories and constraints	Shows limited and less than adequate ability to identify the problems and applicable theories and concepts.	Demonstrates satisfactory ability to identify the problems and applicable theories and concepts.	Understands and properly and accurately identify the problems and applicable theories and concepts.

 **KANSAS STATE UNIVERSITY**  
Carl R. Ice  
College of Engineering


It is important that the performance indicators are clearly observable in an assessment task and that the scoring device used to measure achievement uniquely defines the program's expected achievement as well as differentiates qualities of achievement for each student.

Video #1 - How to identify Performance Indicators for your outcomes



Continue to Video #2

# How to define relevant Performance Indicators



KANSAS STATE UNIVERSITY Carl R. Ice College of Engineering

The next video will describe how to define relevant Performance Indicators