

Staley School of Leadership Studies

2011-2021 Outcomes and Progress Report

2021 Fall Update with the President and Provost

K-STATE
2025

KANSAS STATE
UNIVERSITY

Positive impacts of K-State 2025

K-State 2025 has energized and advanced the Staley School by:

- Mobilizing our faculty and students to be on the leading edge of the study and practice of leadership
- Highlighting the essential role of service-learning and community engagement in providing excellent education that meets our land-grant mission
- Providing opportunities to engage faculty, students, donors, and community in defining our future directions
- Raising visibility, and attracting talent, partnerships, and resources that advance our collective work of “developing knowledgeable, ethical, caring, inclusive leaders for a diverse and changing world.”

Key Strategic Goals

- I. **Expand learning experiences** in ways that reflect our values-based mission and prepare students, faculty and alumni to exercise leadership in their professional, civic, and personal lives
- II. **Create and advance opportunities** for enhanced civic engagement, service-learning and leadership development that mutually benefit student learning and community interests
- III. **Build Capacity** to innovate, lead, and sustain efforts to promote leadership development through interdisciplinary collaboration, engaged teaching and learning, civic engagement, and recruitment and retention of students

Progress/accomplishments

Expanded Learning experiences

- Developed six new academic programs including the secondary major in Global Food Systems Leadership & the interdisciplinary PhD in Leadership Communication, which has 33 students enrolled and two alumni entering year four of the program
- Developed 8 new non-credit leadership programs including the endowed Snyder Leadership Legacy Fellows program in partnership with K-State Athletics
- Over 70% of graduate & undergraduate courses in leadership studies are now available online

Progress/accomplishments

Create and advance opportunities for enhanced civic engagement

- Established the Third Floor Research initiative, in collaboration with the Kansas Leadership Center, conducting and publishing research on civic leadership across the state and globally
- Grew service and engaged learning on food security from two to seven community partners that span the region, and support an active network of campus partners
- The Snyder Leadership Legacy Fellows coached youth on 10-12 Parks and Rec sports teams for six of the last seven years

Progress/accomplishments

Create and advance opportunities for enhanced civic engagement (globally)

- Secured over \$1M grant dollars to bring six cohorts of Mandela Washington Fellows from sub-Saharan Africa to engage in leadership learning at K-State
- Established & developed International Service Teams across three continents
- Advanced leadership research including six scholarly publications (additional in development) and six international presentations on the Leading Change Institutes
- 12 faculty and graduate students led research & development collaborations globally through the Leading Change Institutes, focused in sub-Saharan Africa

Progress/accomplishments

Building Capacity

- Raised over \$14M including seven new endowments
- Doubled our tenure-track and graduate faculty
- Endowed chair for directorship
- Established three graduate teaching assistantships and three graduate research assistantships
- Recruited top talent including new dedicated communications position and program assistant to advance our mission

Key metrics

Expanding Learning Experiences

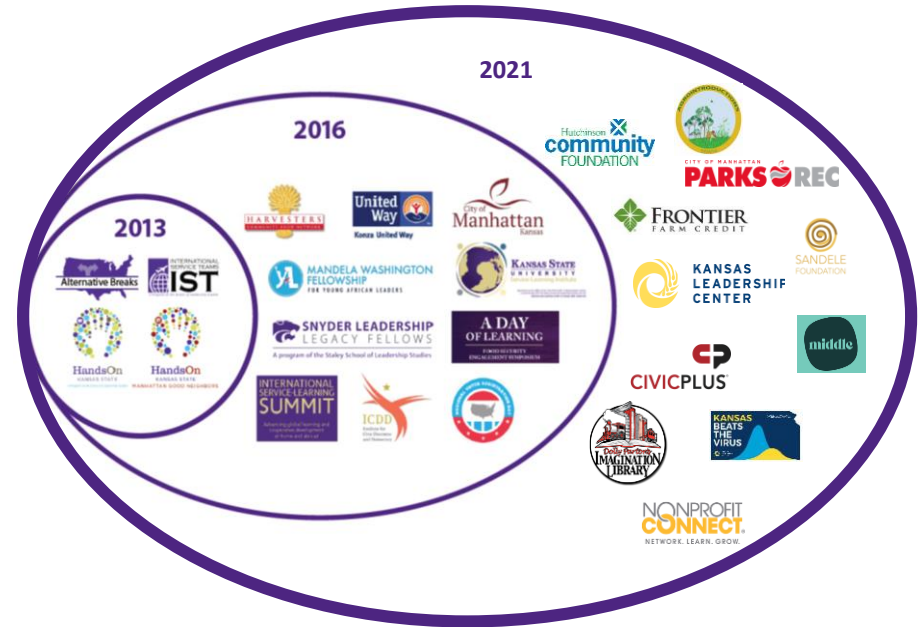
- Added 15 new formal learning experiences since 2011

2011	2021
Leadership Studies Minor Nonprofit program/certificate Student programs	Leadership Studies Minor Nonprofit program/certificate Student programs Global Food Systems Leadership secondary major Engineering Leadership and Innovation KSU in Italy leadership studies Your Leadership Edge Snyder Leadership Legacy Fellows Graduate Leadership Development Leadership Communication Ph.D Edgerley-Franklin Leadership Scholarship Food Security Scholars K-State Strengths Leading Change Institutes What Matters to Me and Why Wildcat Dialogues University Honors Program Nationally Competitive Scholarships

Key metrics

Create and Advance Civic Engagement

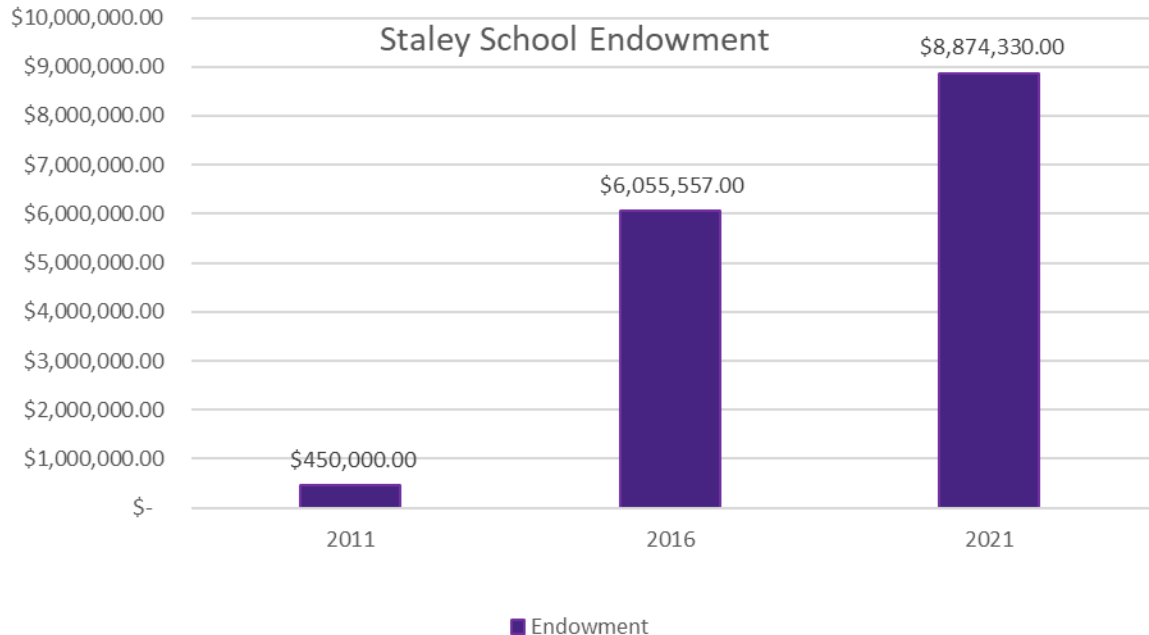
- \$1M secured with Mandela Washington Fellowship since 2016
- Expanded community partnerships
- \$600k in grant funding secured from Kansas Leadership Center to advance research in civic engagement through the Third Floor Research collaborative



Key metrics

Building Capacity

- Raised \$14M in the Innovation and Inspiration campaign and established 7 endowments
- \$8,874,330 permanently endowed



Top priorities moving forward

- Offer and promote a powerful, distinctive K-State student experience grounded in leadership and engagement that prepares students to solve the world's most pressing challenges
- Build a dynamic university honors program and community that engages high-achieving students in high-impact, engaged learning
- Increase the diversity of learners, faculty and staff in the full range of the School's programs and learning opportunities
- Advance and catalyze engagement at K-State to broadly connect students, accelerate engaged research and scholarship, and serve local, state, national, and global communities
- Build the capacity and infrastructure necessary to support and realize the Staley School's expanded role advancing leadership education and development, engaged teaching and learning, community engagement, and recruitment and retention of learners

Our students deserve, and our times demand, that we lead – boldly, wisely, confidently.

-Staley School 2025 Strategic Plan