



College of Architecture, Planning & Design

2020 Fall Update with the President and Provost

K-STATE
2025

KANSAS STATE
UNIVERSITY

Progress/accomplishments



Faculty and Students receive numerous national and international recognitions.

APDesign faculty applied for grants totaling \$1,150,224 during FY2020-YTD.; awarded 17 grants totaling \$302,521.

104 students completed the APD*Pro* Program in 2019-20.

559 students participated in at least one APD*Pro* development event.

Diligently worked to maintain educational standards during the initial months of the coronavirus pandemic.

Interior Architecture & Industrial Design

Progress/Accomplishments

- **Continued partnerships** with Sloan, OFS, KCKPS, and TPS
- **Two design projects picked-up** by continued partnerships
- **Twenty students enrolled in 1st year of Industrial Design degree**
- **Faculty**
 - Commerce Bank and W.T. Kemper Foundation **Outstanding Undergraduate Teaching Award**
 - Successfully **created two online courses** of core curriculum
 - **Faculty presented** 6 papers at workshops and conferences internationally and 3 papers in domestic conferences
- **Student**
 - **2020 Next Student Design Competition Winner** and multiple Finalists
 - **Six international conference presentations** for research papers.
 - New Balance **Internship Competition Winner**



Landscape Architecture and Regional & Community Planning

Progress/Accomplishments

DesignIntelligence
rankings



Research Procedure

- Participants are randomly assigned to one of the four different environments (Low/High biodiversity) with sound and no sound by using Virtual Reality (VR) simulation for five minutes.
- The survey was conducted to measure perceived restorative attention and psychological wellbeing



National recognition of academic programs:

- Landscape architecture is #5 program in a public institution
 - Only public program ranked in top 5 of all 12 Focus Areas of Practice
 - #1 Most Hired from by Firms
- Regional & Community Planning is #10 in the Midwest,
Only program in the top 10 in our region and #8 in a Small City

International, national, and regional student recognition:

- 2 more US DOT Dwight D. Eisenhower Fellowship winners
- Ha selected for *Research and the State* exhibit at the Capitol

National faculty recognition

- Rolley recipient of Jot D. Carpenter Teaching Medal, ASLA
- Kim recipient of \$150K NSF grant for Smart and Connected Cities

Architecture

Progress/Accomplishments

From 2019:

- Curricular refinement
 - We have adopted a new model for upper-level classes to enhance student options, flexibility
 - We have begun a study to offer the MS Architecture at the KCDC as an embedded urban research program
- Enhancing reputation
 - Design-Make projects received awards, acclaim, support (Fabricated face shields, Net Zero Studio)
 - Sponsored studios, participation in national competitions, practicing professionals in studio
- Recruitment
 - Students entering program, retention remains at or above Pre-COVID levels

Key metrics



~\$30.3 million Endowment Pool (planned + received gifts) [B-2]

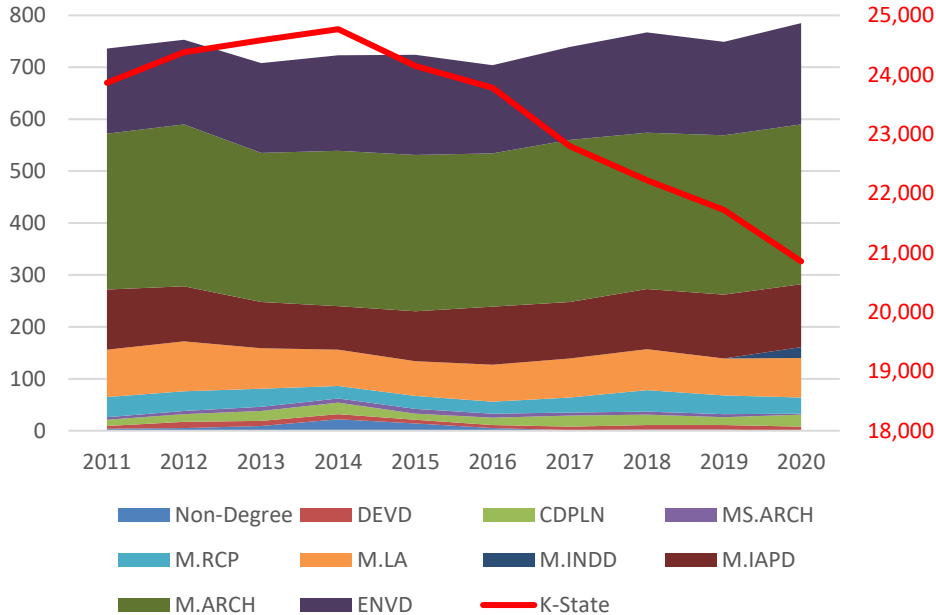
91% Freshman to Sophomore Retention Ratio [B-6]

74.8% Six-Year Graduation Rate [B-7]

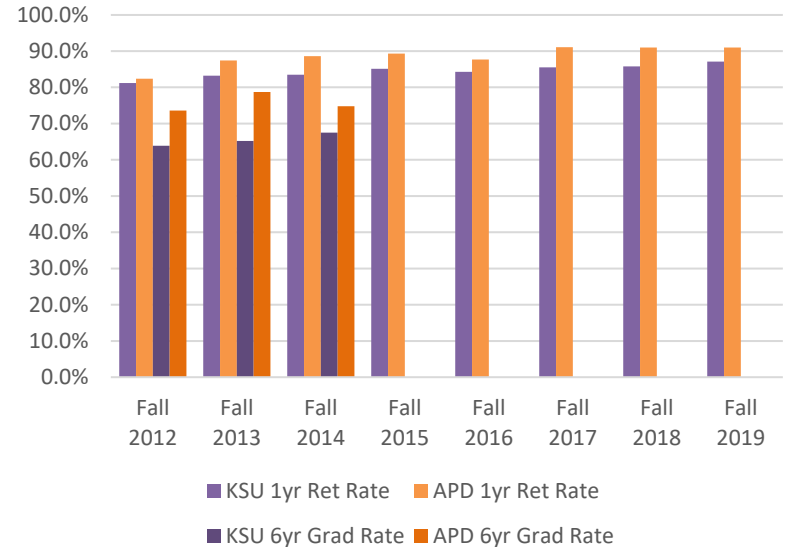
Graduated 11 from the Environmental Design & Planning PhD program since 2012 [B-5]

APDesign Student Population

APDesign Enrollment v. K-State Enrollment



APDesign's Retention & Graduation Rates



Interior Architecture & Industrial Design

Key Metrics

- Maintain top national rankings for the Interior Architecture Program.
- Develop and grow enrollment numbers for new Industrial Design Degree.
- Develop recruitment efforts for post-baccalaureate degree paths.
- Increase industry partners to continue successful product development.
- Improve support for student scholarships through additional connections with industry and alumni.



Landscape Architecture and Regional & Community Planning

Key Metrics



- Student achievement
 - National and regional recognition in competitions and fellowships
- Student support
 - Endowment of additional MLA and MRCP scholarships
 - Increased GRA opportunities
- Faculty achievement
 - Landscape materials research and library
 - Transportation research
- Program recognition
 - DesignIntelligence and Planetizen rankings
- Program support
 - Major gifts and engaged alumni

Architecture

Key Metrics

- Student numbers remain high
 - incoming numbers
 - retention, students switching into ARCH, articulation agreements
 - SCH overall and per capita (faculty)
- Regard of program remains high both nationally and regionally
 - Design Intelligence - #2 most hired, top 25 most admired, top 10 in eight focus areas
 - Student placement after graduation, Design Expo attendance
 - Faculty and alumni recognition (Chanyakorn, Dessi-Olive, Gibson)
- Curricular involvement/partnerships (regional, national, international)
 - Sponsored studios continue. Some relationships on hold due to COVID.
 - Faculty working with local and national client groups (Habitat, e.g.)
 - Design Make fully utilizing on and off campus resources for high quality design & fabrication

Top priorities moving forward

- ▶ Maintain focus on recruitment, retention and graduation rates of our students.
- ▶ Increase our programmatic offerings and diversity to build opportunities for students and partnerships with industry.
- ▶ Continue to acquire software and hardware technologies inline with advancements in allied industries.
- ▶ Continue efforts at federal level and leverage STEM recognition for recruitment, scholarships and research grants.
- ▶ Continue to solicit support for APDesign's 5th Year Fellowship, an effort to raise an endowment for a tuition free 5th year.

Interior Architecture & Industrial Design

Top Priorities Moving Forward

- Develop a highly ranked Master of Industrial Design Program.
- Work with the Dean's office to establish an Endowed Chair and Professorship.
- Continue to grow partnerships with manufacturers, professional organizations and community programs.



Landscape Architecture and Regional & Community Planning

Top Priorities Moving Forward



- Recruit
 - New degree path for new types of students using existing coursework
 - Continue development of online courses, moving toward more online degrees
- Restore
 - Faculty technology resources
- Collaborate
 - With Dept of Finance on real estate and development degrees/certificate
 - With other units on new certificate opportunities
- Develop
 - Faculty RSCA
 - Additional student scholarships

Architecture

Top Priorities Moving Forward

- Continue to fine-tune curriculum to enhance quality, competitiveness
 - Post-baccalaureate program to increase options, identity, desirability
 - Overhaul Master of Science program to reflect and enhance current/future faculty trajectories
- Applied research initiatives leveraged to increase department recognition
 - Build up infrastructure for continuing Design+Make studio, prototyping, applied research
 - Partner with funding agencies that forward these ends (RDA, e.g.) and client bases that would benefit (non-profits, forward-thinking firms and product fabricators)
 - Be more communicative about our strengths and achievements (faculty and students)
- Sustain successful recruitment of students and faculty
 - Develop new pathways for AA, BA, pre-professional architecture students to enter programs
 - Bring in highly qualified practitioner-scholars to enhance value of K-State Arch to prospects