



Kansas State University Polytechnic Campus

2019 Fall Update with the President and Provost

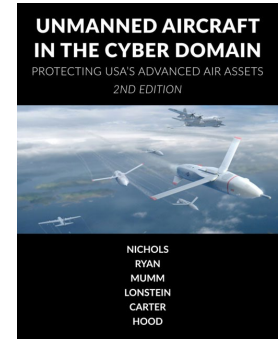
K-STATE
2025

KANSAS STATE
UNIVERSITY

Progress/accomplishments

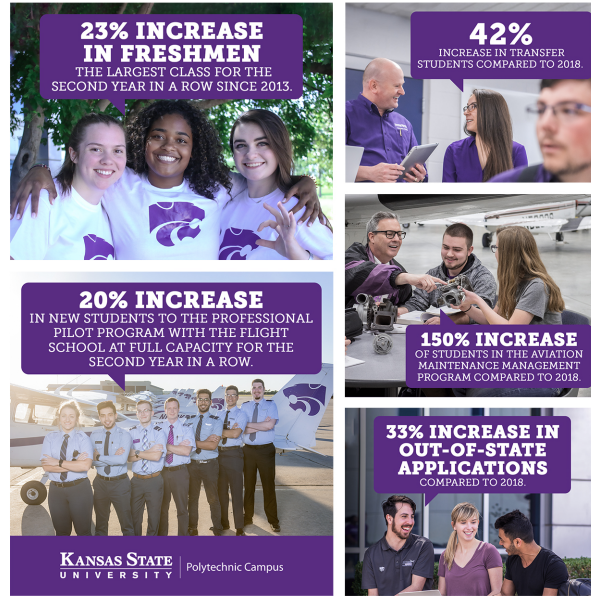
THEME 1 – Research, Scholarly and Creative Activities, and Discovery

- \$1.2M in sponsored projects
- IPP, Simlat Partnership Beyond Line of Sight Waiver from FAA
- 2 Textbooks Published
- Faculty/Staff presented at 32 conferences, 3 invited keynote speakers
- Visiting professors from Brazil (5 published papers, 2 potential patents)



Progress/accomplishments

THEME 2 – Undergraduate Educational Experience



Progress/accomplishments

THEME 2 – Undergraduate Educational Experience

- 98% of students enrolled by July 1
- 98% placement rate for graduating students
- Make48 Competition
- Pisces VI Submarine – Sophomore Student Projects
- Hosted Inaugural Industry Day
- Cat's Corner
- Associates in Web Development Offered on Base at Fort Riley and Online



Progress/accomplishments

THEME 4 – Engagement, Extension, Outreach and Service

- 2nd Place in Training and Education at AUVSI XPONENTIAL
- Summer camps for K-12 students and teachers
- 240 workforce development trainings 2,721 individuals
- Project Open Chamber Partnership
- Hosted Midwest Big Data Hub Digital Agriculture Spoke





Professional Industry Training Course Participants

Participating Companies

3M
A Schulman
ACME Constructors, Inc
AECOM
Air Mac, Inc.
Airmatic Inc.
Amway-NutriLite
Apex Engineering
Archer Daniels Midland Co.
Ascend
Audia Plastics
Aurora Plastics
Bechtel
Bemis North America
Bergkamp Inc.
Bergquist Company
Bestofite Corp.
BioLab Inc.
BioMatrix, Inc.
Bonar Inc.
Boral IPH
Bidgastone
Brunk LLC
Bunge Milling
CANTEX, INC.
Cargill
Carlisle Syntec
Carolina Precision Fibers
Cascade Engineering
CDG Engineers
CODRIA
Corne Calcium Co
ChaDa Sales, Inc.
Charlotte Pipe
Chemours
Chemstress Consultant Co
Chevron Energy Technology
Clasen Quality Chocolate
COLOR MASTER
Continental Contitech
CooresTek
CooresTek, Inc.
Coperion K-Tron
Covestro, LLC
CP Kelco
Criterion
Custom Equipment Design
CV Technology
Cyclonaire Corporation
DAK Americas
DeBardleben & Associates
Deceuninck

DuPont
ECI Technology
Engineered Profiles
Ensign Equipment
ExonMobil
Farrel Corporation
Firestone Building Prod.
GAF
General Mills
Grain Craft
Green Dot
GSK
HAF Equipment
Hallstar
HammerTek
Harris Group
Henkel Corporation
Heritage Plastics
Horizon / Miocene
Imerys
Independent Stave Company
Innovative Processing Solutions
Interface
Invista
J&M Tank Lines
J.M. Smucker
Kaesler
Kansas State University
Kellogg Company
Kerry Inc.
Kestrel Engineering
Kice Industries
Kievit
KIK Custom Products
Kuraray
Leprino Foods Company
LiquaDri, Inc.
Lyondellbasell
M&M Milling
Magnetrol
Magnum Systems
Mars Chocolate
Material Handling Solution
McCormick Construction
McKee Foods Corporation
Michelin
NAPCO
Natural Soda
Nestle Purina
Nestle Purina PetCare
Nol-Tec Systems
North American Pipe Co.

NOVA Chemicals (Canada) Ltd.
Novamont North America
NovationIQ
Nucor Steel Marion
Nutrilite
Omya
One Degree Organic Foods
Otech Corp
Owens Corning
Pete Lien & Sons
Peterson Pacific
PIF Industries
PGP International
Phibro Animal Health Corp
Pinnacle Polymers
Pioneer
POET
POET
PolyOne
POWER Engineers, Inc.
PQ Corporation
Premier Research Labs
Progressive Products, Inc.
Pulva Corporation
Red Star Yeast
Rehrig Pacific Company
Rotary Airlock
Sasol
Schenck Process
Shell
Solvay Specialty Polymers
Styrolution
Tektur Apex
The Dennis Group
Tinsley Company
Traditional Medicinals
Tronox
Tundra Companies
Tundra Innovations
Tyson Foods Inc
Uniform Color Company
United States Gypsum
University of Minnesota
USG
Vertex Pharmaceuticals
Veyance Technologies, Inc.
Vortex Valves
WAM USA Inc
Washington Mills
Washington Penn Plastic
Wenger Manufacturing, Inc
Wm. W. Meyer & Sons
Wrigley
Zoecon

Enrollment by Year

2016: 77
2017: 83
2018: 87
2019: 56

Enrollment by Course

Introduction: 98
Pneumatic Conveying: 189
Storage and Flow: 18



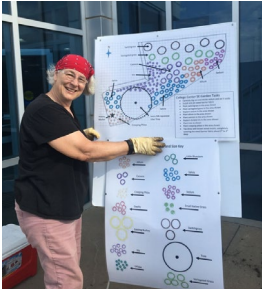
KANSAS STATE UNIVERSITY Bulk Solids Innovation Center

Updated 10/2019

Progress/accomplishments

THEME 6 - Facilities

- SHAPE Award
- Landscape Committee
- Chemistry Lab Renovation
- Technology Upgrades in Classrooms
- Residence Hall Improvements
- Ramp Replacement



Key metrics

- Undergraduate and graduate enrollment
- Freshmen to sophomore retention rate
- Six-year graduation rate
- Student placement rates
- Publication, and presentation rates of faculty, professional staff, and students
- Awards and recognition of faculty and staff
- Successful external funding awards/number of sponsored projects
- Fundraising campaign

Top priorities moving forward

- Strengthen and solidify campus vision
- Develop plan to advance long-term financial stability and sustainability of campus
- Diversify net revenue generation streams
- Academic program prioritization
- Develop 5, 10, and 20-year maintenance and replacement plan for facilities and IT
- Develop staffing and compensation plan based on budget model implementation and targeted enrollment plans
- Develop internal structure and external engagement strategy to support the implementation and advancement of the Global Aviation Initiative
- Develop Strategic Enrollment Management plan for campus
- Update Campus 2025 plan

Thank You!

