

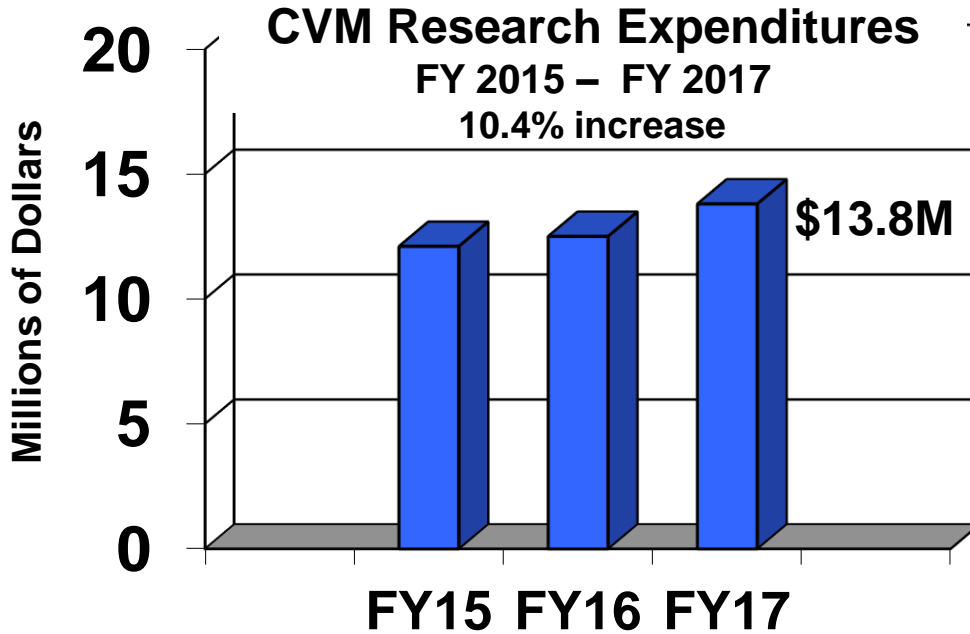


# College of Veterinary Medicine

2017 Fall Update with the President and Provost  
Highlights and Accomplishments

**K-STATE**  
**2025**

**KANSAS STATE**  
UNIVERSITY



### FY ' 17 Awards

Submitted - \$31.5M

Funded - \$11.6M

DMP-\$8.3M

- **Interdisciplinary Centers**
  - Beef Cattle Institute (BCI)
  - Center of Excellence for Emerging and Zoonotic Animal Diseases (CEEZAD)
  - Center of Excellence for Vector-Borne Diseases (CEVBD)
  - Center for Epithelial Research
  - Center for Outcomes Research and Epidemiology (CORE)
  - Institute of Computational Comparative Medicine (ICCM)
  - Midwest Institute for Comparative Stem Cell Biology
  - Nanotechnology Innovation Center of Kansas State (NICKS)
  - U.S- China Center for Animal Health
- **Center Reviews: 1 complete/4 planned**
- **Graduate Program Review: 2018**

# *Education - Degrees*

- **DVM:** 112 students/class
- **DVM-PhD:** 16 students, 12 on scholarship, 5 completions
- **MPH:** 22 DVM-MPH students; 40 infectious disease/zoonosis track students
- **MS K-State Olathe:** 18 students enrolled in Veterinary Biomedical Sciences

## Summary

Criterion Group Candidates	N	Number Passing	Percent Passing	Mean Scale Score (SD)
All	4072	3598	88	505(67)
Your School	108	104	96	522(61)

### Average Percentage of Items Correct and Standard Deviation (SD) by Content Category

	All	Your School
Total Test	69(8)	72(7)
Species		
Small Animal	71(9)	72(8)
Canine	71(10)	73(9)
Feline	71(10)	71(9)
Food Animal	68(10)	71(10)
Bovine	68(11)	72(10)
Porcine	66(14)	68(14)
Equine	70(11)	74(10)
Activity		
Data Gathering and Interpretation	70(9)	71(8)
Health Maintenance and Problem Management	69(9)	72(8)
Organ System		
Cardiovascular	72(14)	73(13)
Endocrine	70(17)	71(15)
Gastrointestinal	69(10)	71(9)
Hemic and Lymphatic	69(13)	70(13)
Integumentary	70(12)	72(12)
Musculoskeletal	69(12)	74(12)
Nervous	70(12)	71(12)
Respiratory	69(12)	72(12)
Special Senses	71(16)	75(16)
Renal/Urinary	69(16)	72(17)
Reproductive	69(12)	72(11)
Multiple Organ Systems	69(10)	71(9)

# Education

- 2017 NAVLE Pass Rate – 98%
- 2017 Employment Rate – 99%
- Employers – 1 year
  - 94% of new graduate employers would hire another KSU DVM graduate.
  - 89% would re-hire this same graduate.
- Graduates – 1, 3, 5 year
  - 89.6% were satisfied with their KSU-DVM education.

## 'CATS helping DOGS



Most highly rated senior rotation.

2017 Excellence in Engagement Award, K-State Center for Engagement and Community Development.

Grant renewal from PetSmart Charities Inc.

Completed their 10,000<sup>th</sup> case in September.

# Facility renovation



Student Services Center (1,500 sf)

## CVM Testing Center

- 113 exams, maximum students - 11

## Counseling Services

- Services provided to 144 students.
- Communication training: 108 students.

## Wellness Activities

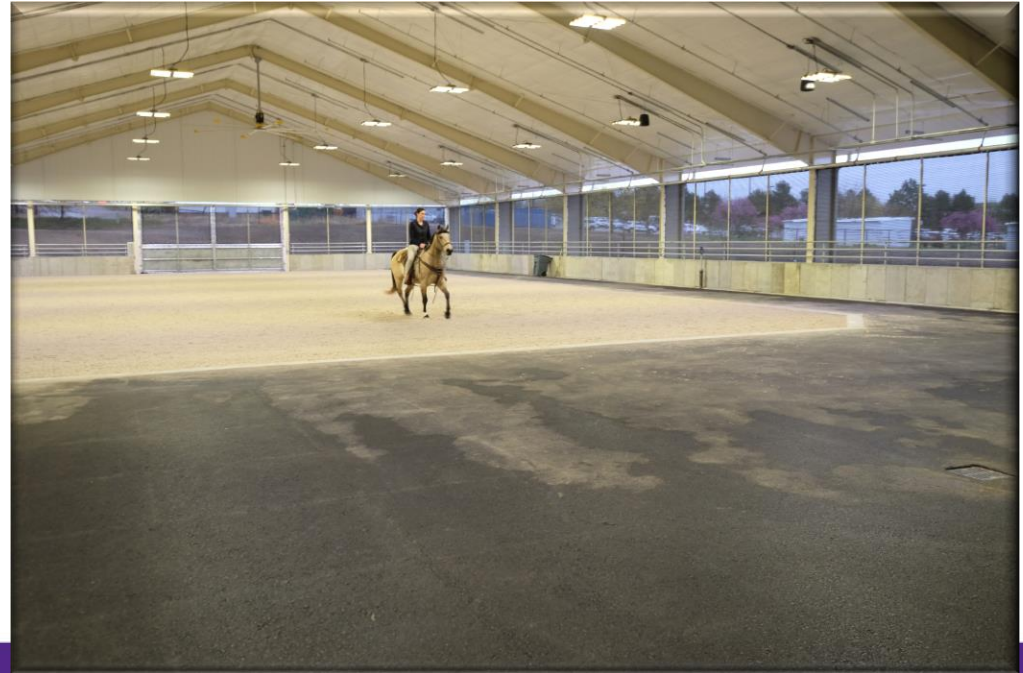
- Career Risk Awareness: 109 students
- Yoga: 405 students/27 sessions
- Lunch and learn: 76 students/2 events.
- We Care Breakfast: 372 students
- Caring for Others: 41 nominees; 17 awardees



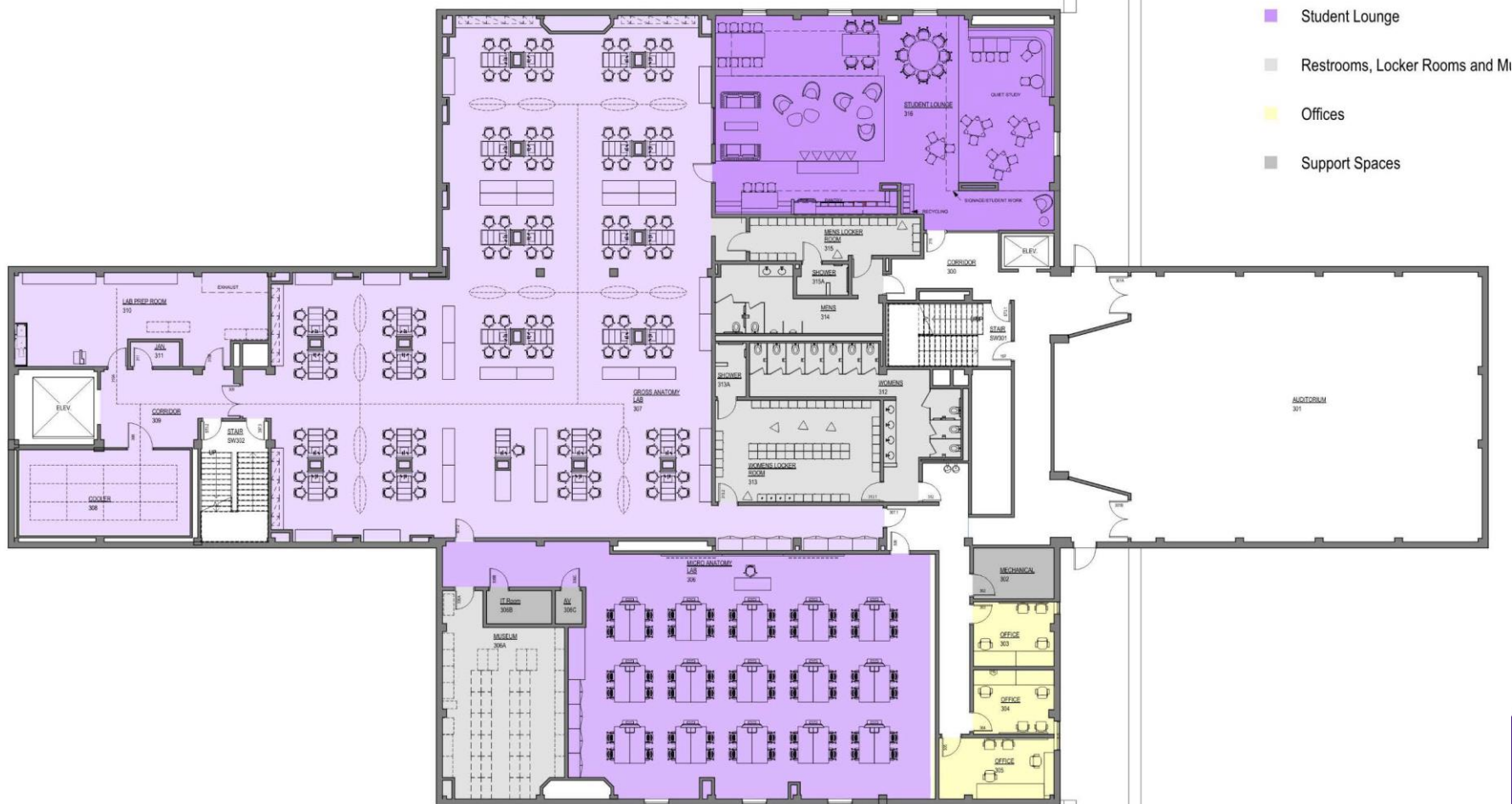
Evaluation of lameness and neurologic dysfunction.

Enhanced caseload.

Future: Rehabilitation services.







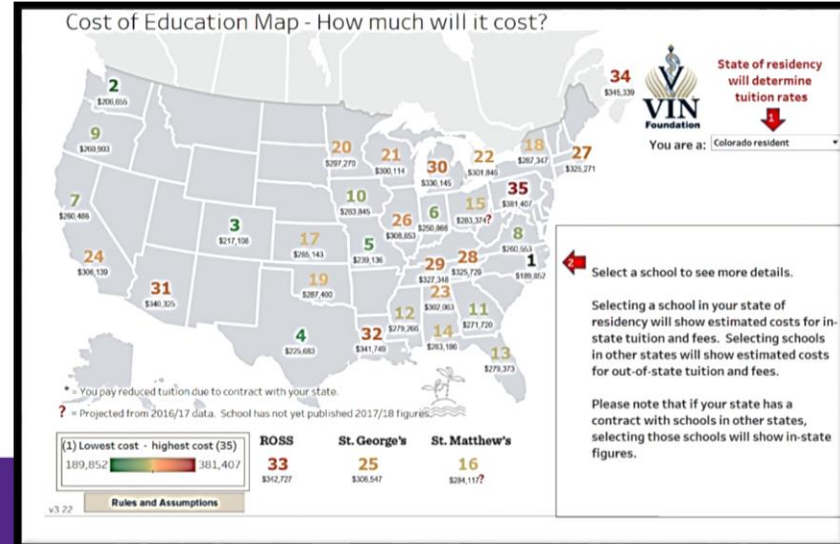




*Third Floor Renovation – Dr. James Boyd '57*



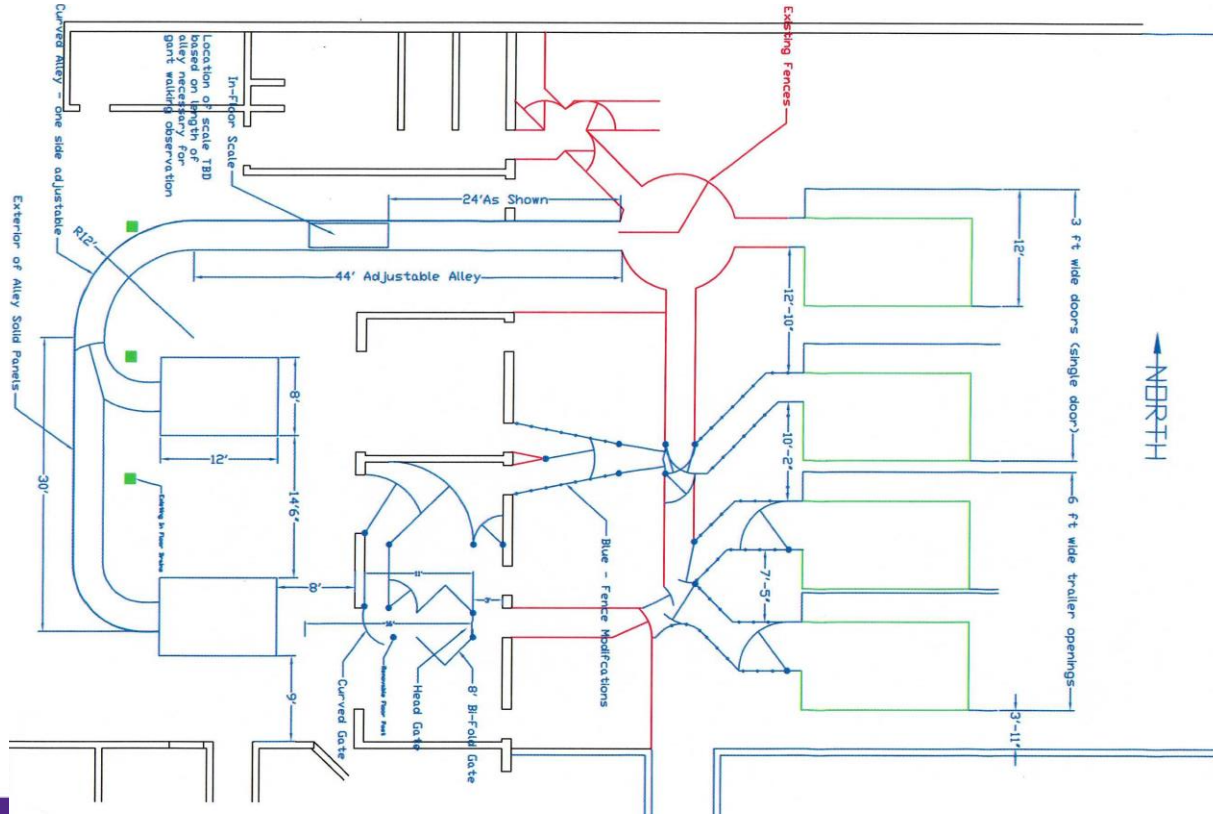
- '17/'18 Tuition freeze
  - \$533.6K
- Reduce fees, required books, supplies: -\$2.1K
  - \$128K



- Record first quarter for CVM in FY '18.
- Student scholarships – \$6.2M since January.
  - Six K-State Family matching awards of \$30K.
- 68 first time contacts since January.
- Prime Officers:
  - Reeher Community: 120 institutions; 1950 officers
  - Total FY donor visits and closed proposals in top quartile.
  - 172 named prime officers nationally
  - Joan Burton and Eric Holderness



- COE decision: 2 weeks
- Admissions: GRE
- Curriculum Review
- FA Flooring





# Future CVM Priorities

- The cost of the DVM degree
- Contemporary facility renovation





*Exceptional teaching.*

*Impactful research.*

*Outstanding service.*

*Extraordinary graduates.*

