



Division of Student Life

2017 Fall Update with the President and Provost

K-STATE
2025

KANSAS STATE
UNIVERSITY



Division of Student Life

Vision

Student Life programs will advocate support, and prepare students to achieve academic success while maximizing their personal and professional potential, as we become a top 50 public research institution

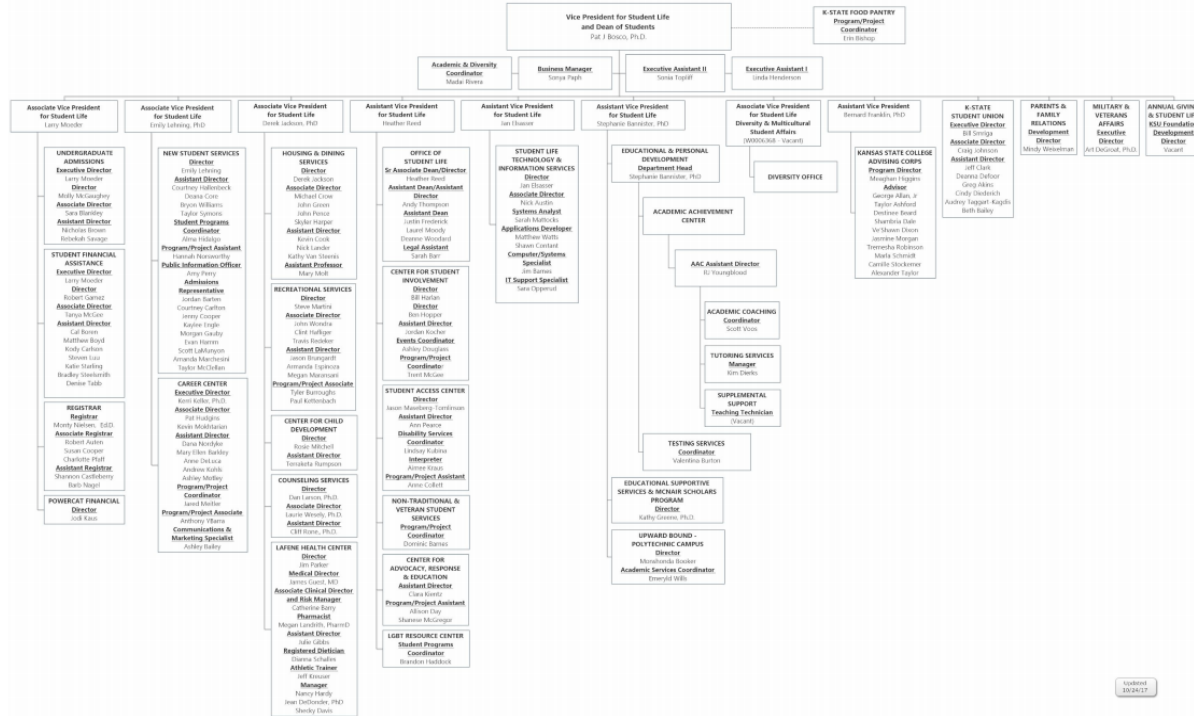
Mission

The Division of Student Life promotes student success through opportunities for student involvement experiences to strengthen personal and academic growth, leadership, and professional development, and community engagement in a diverse, inclusive and equitable world

Reorganization



Vice President for Student Life



Progress/accomplishments

Research, Scholarly and Creative Activities and Discovery

Academic Student Support

- During the first five weeks of the fall 2017 semester, the Holtz Hall Tutoring Center saw an approximate increase of 27.84% in the number of students that have scheduled free tutoring by that point in the semester when compared to the last four years. Additionally, the fall 2017 semester is the first time that the Holtz Hall Tutoring Center has seen over 1,000 students by week five.



Progress/accomplishments

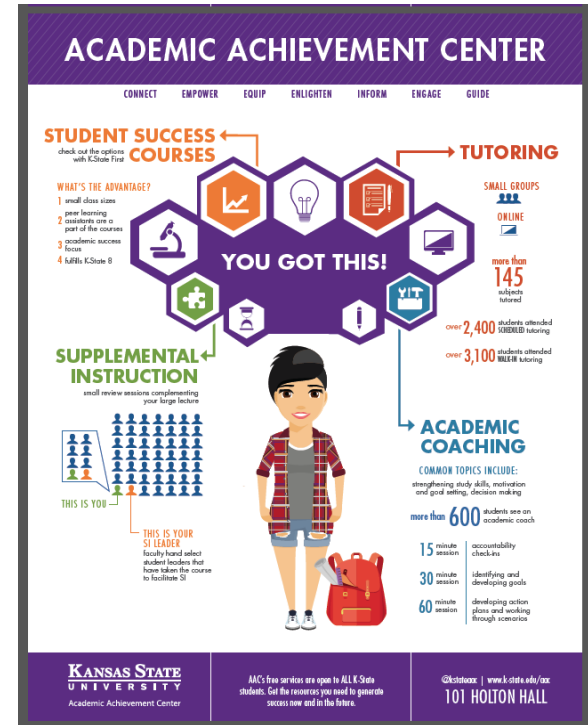
Undergraduate Educational Experience

Career Exploration and Placement

- Ranked among the top 20 (#16) career services in the country by Princeton Review.

Academic Coaching

- So far, in fall 2017 semester, over 577 students have sought coaching, including those admitted by exception. During the 2016-2017 year, we enrolled 106 voluntary students seeking coaching.



Undergraduate Educational Experience (continued)

Student Leadership and Involvement

- Thorough reorganization created the University Success Center in Holton Hall. This move allowed for all partners to share in training, support and outreach. The Center for Student Involvement was developed to collaborate and host the registration of student organizations; 478 student organizations have registered or are finalizing registration under the new policy and procedures.





Undergraduate Educational Experience (continued)

Responding to Student Crises

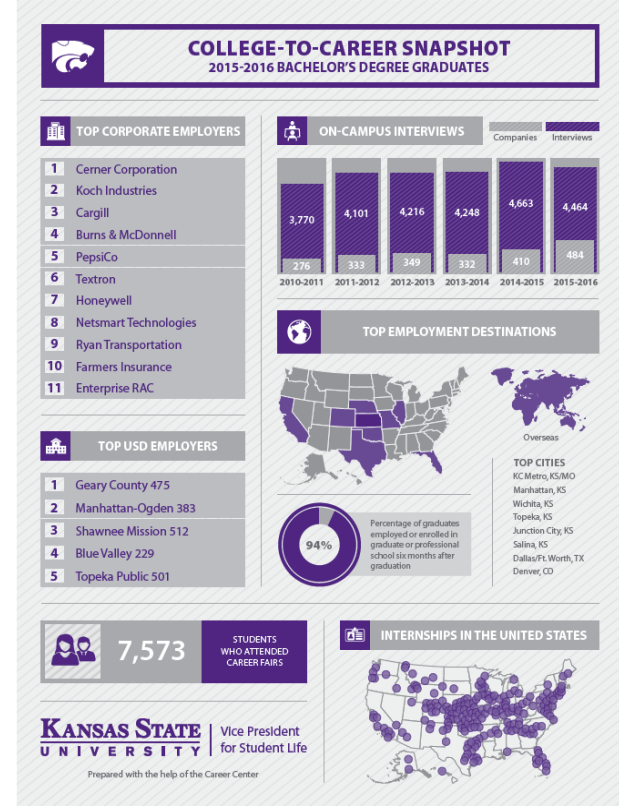
- Office of Student Life responded to nearly 400 Student of Concern reports, submitted by K-State faculty, staff, student and parents, during the past year, for appropriate help or intervention. Approximately 3,000 student seek help and support through the Office of Student Life each academic year.

2016-2017

- There were 15 CIRT (Critical Incident Response Team Training) cases: threat to students, domestic violence, disruptive behavior, threat to self, sexual harassment, sexual assault, stalking, weapons violation, arrested for sexual battery, arrested for murder. Fifteen cases is the annual average.
- 36 students were referred to the Student of Concern - EAR (Early Assessment and Reporting Group).

Graduate Scholarly Experience

- The Division of Student Life is partnering with the Graduate School to host an inaugural series of Visit Days in March 2018 for the recruitment and selection of students interested in graduate assistantships throughout the division. This includes a universal application and standard position descriptions for all departments within the division.
- Housing and Dining supports students with graduate assistantships in areas of retail, hospitality, and has provided financial support for travel to present at conferences.



Graduate Scholarly Experience (continued)

- McNair Scholar Program: The TRIO Program funded by a grant from the federal Department of Education to prepare talented undergraduates for graduate study, with the goal of increasing the number of Ph.D. recipients from underrepresented socio-economic and ethnic groups. The McNair Scholars Program has been a part of K-State for 22 years and was recently awarded a new 5-year grant.





Engagement, Extension, Outreach and Service

Connecting Facilities and Resources

- The Kansas State College Advising Corps hired 10 advisers to work in the Kansas City area school districts, compared to six advisers hired last year, to increase postsecondary participation of first generation students.

Faculty and Staff

Staffing Advancements

- Hired two counseling psychologists this past summer to address the growing utilization of Counseling Services.



Facilities and Infrastructure

Campus Health and Wellness Master Plan

- Completed a yearlong study prioritizing the health and wellness of our student body, and creating a long-term vision for the facilities and activities that support this value. Developed long-term objectives for campus health and wellness while considering the need to be efficient and financially sustainable.





Facilities and Infrastructure

Facilities Projects Completed or Underway

- Opened the Career Closet in Berney Family Welcome Center. Distributed 1,460 clothing items to 726 students so they were professionally prepared for their interviews, employment and internship/job searching. Hosted 2,457 on-campus interviews in our new home, the BFWC.
- Completed the \$32 million renovation of the K-State Student Union.
- Student Access Center refurbished their testing space to provide more services to students with better accommodations. Last year they assisted faculty by proctoring over 2,700 exams in the new space.

Facilities and Infrastructure (continued)

Facilities Projects Completed or Underway

- Completed the \$32 million renovation of the K-State Student Union.
- Successful renovated LaFene Student Health Center while improving care to our students

Future projects

- Move the University Counseling Services to the memorial property
- Begin to prepare for the design phase of the Derby Food Center and east side of residence halls
- Explore partnerships with Manhattan Technical College and university high risk students



Highlights (selected)

- Complete reorganization of student organizations under the Center for Student Involvement
- Select AVP for Diversity and Multicultural Student Affairs and successfully transition the office of diversity to the division of student life.
- Fundraising plan for Multicultural Student Center will be developed with university partners
- Champion need-based scholarships
- Develop fiscal sustainability for Cats' Cupboard

Highlights (selected)

- Have initiated and out-of-state recruitment campaign to include regional-based admissions representatives, identifying new prospects and cultivating their interest in the university.
- Strengthen and grow domestic out-of-state enrollment numbers and continue to become the #1 choice for Kansas high school graduates

