
College of Veterinary Medicine

K-STATE
2025

KANSAS STATE
UNIVERSITY



K-State 2025 Strategic Direction Action Plan

**FIVE-YEAR PROGRESS REPORT
2016**

Tammy Beckham, Dean

Personnel



- Faculty Numbers
- Increased from 109 to 127
- Endowed Chairs and Professorships
- Increased from 8 to 10
- National Academy Members
- Increased from 0 to 1

Education

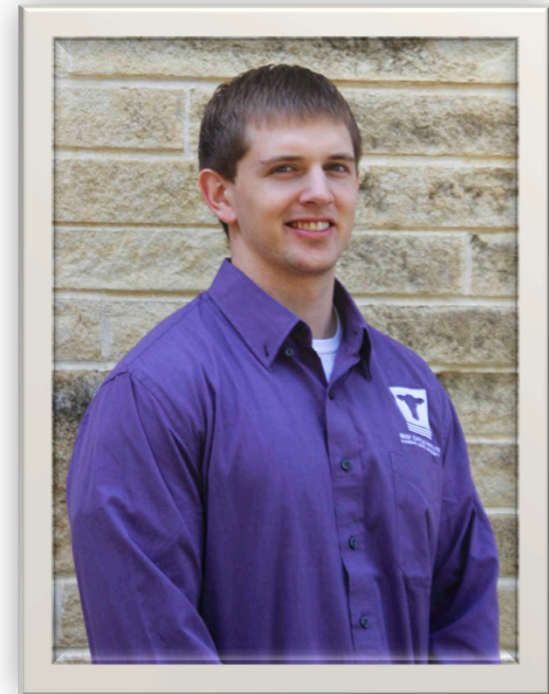
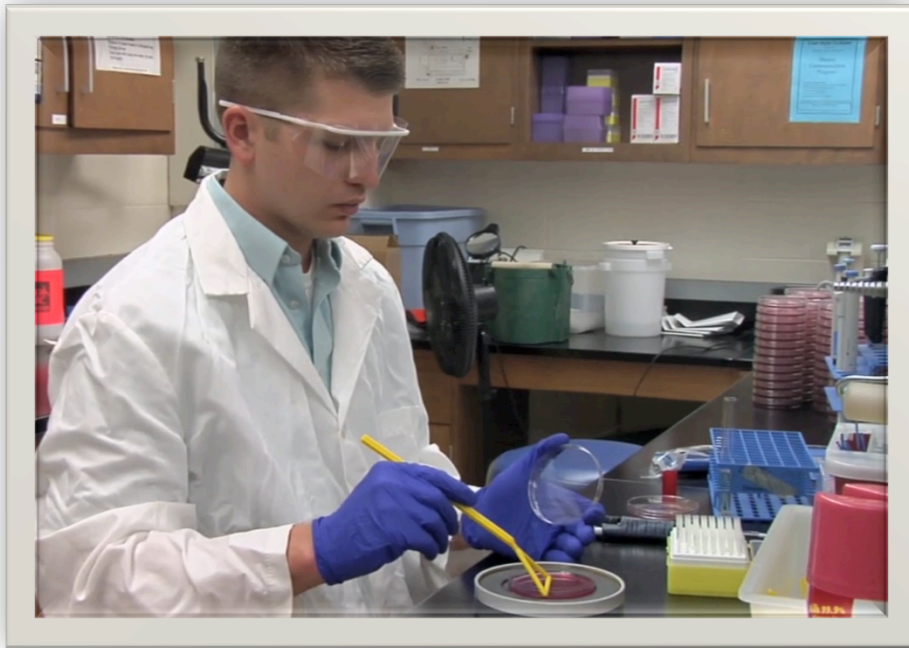


- DVM Students
- DVM-PhD Students
- Remained constant at 112
- Increased to 16 students; 12 are/were on scholarships and 4 have completed both degrees

DVM-PhD Scholarship Students



Charley Cull
DVM 2014 – PhD 2015
Midwest Veterinary Services



Jacob Hagenmaier
DVM 2016 – PhD 2016
Elanco Animal Health R&D

Class of 2016 Exit Survey

• Large animal practice	07	\$65,928
• Mixed (50% large / 50% small)	18	\$67,332
• Small animal practice	39	\$74,460
• Equine	01	
• Military	03	\$72,667
• Not for profit	02	\$87,000
• MPH or MS program	02	\$35,000
• PhD program	02	\$45,000
• Internship	32	\$31,752
• Unknown	13	
Average practice salary		\$70,883
Average Kansas practice salary		\$64,269 (21 graduates)
Average non Kansas practice salary		\$74,190

Class of 2020

Male students - 14

Female students - 103



AZ - 01
CA - 12
CO - 04
CT - 01
FL - 03
GA - 01
IA - 01
IL - 03
IN - 01
KS - 48
MA - 02
MD - 01
MI - 02
MN - 01
MO - 08
NC - 01
NE - 02
NH - 01

NJ - 01
NY - 05
OH - 01
PA - 04
TX - 07
VA - 01
WI - 02

China - 02

Education



- MS Students
K-State Olathe
- K-State Olathe Veterinary Biomedical Sciences MS Program has averaged 19 students per year
- MPH Students
- Since accreditation, an average of 53 students/year in the infectious disease track and 20 were concurrent DVM-MPH students

MPH Field Experience



Marie Keith (DVM 2018)

MPH field experience, summer 2016 in Beijing, China. Marie worked at the National Rabies laboratory of China, in the Division of Infectious Diseases, on a rabies assessment program in conjunction with the CDC.

Stefanie Campbell (DVM 2018)

MPH field experience, summer 2015 at the Fort Riley Department of Public Health. Stefanie investigated low vaccination compliance amongst Fort Riley families.



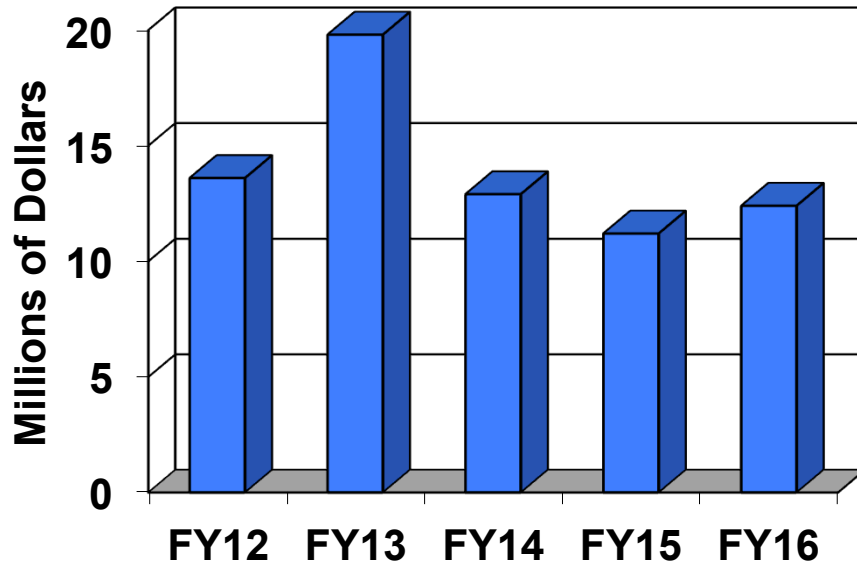


Research, Scholarly and Creative Activities, and Discovery (RSCAD)

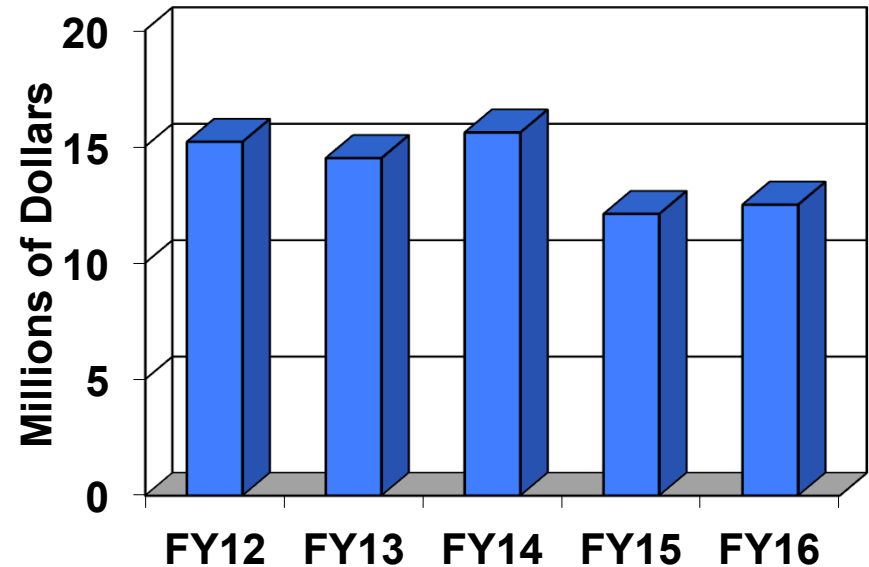
RSCAD



CVM Research Awards FY 2012 – FY 2016



CVM Research Expenditures FY 2012 – FY 2016

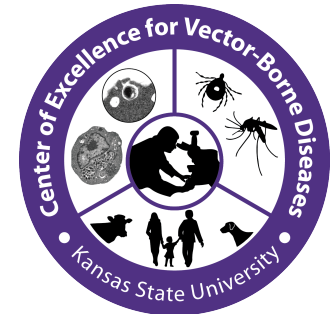
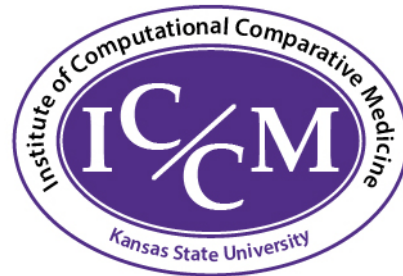
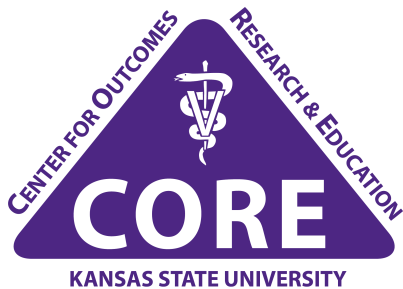


RSCAD



- Interdisciplinary Centers

- Increased from 5 to 9 Institutes and Centers



Centers of Excellence

- Center of Excellence for Emerging and Zoonotic Animal Diseases



C · E · E · Z · A · D

Center of Excellence
for Emerging and Zoonotic Animal Diseases

A Department of Homeland Security
Center of Excellence



U.S.-China Center

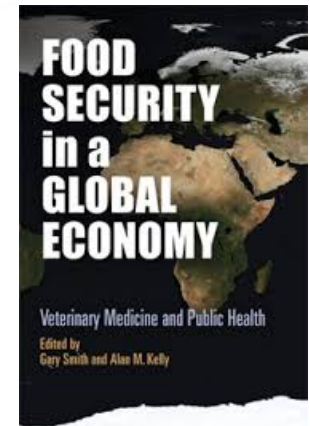


- U.S.-China Center for Animal Health
 - First graduating class 2017
 - Four students/year
 - Partnership with Iowa State, UC Davis, Minnesota, Kansas State, Zoetis, Banfield, China Scholarship Council



International Programs

- Program
 - Increase faculty and student opportunities in international veterinary medicine
 - Increase profile of KSU CVM internationally
 - Preparing students for global challenges
 - Antimicrobial Resistance
 - Food Security
 - Sustainability





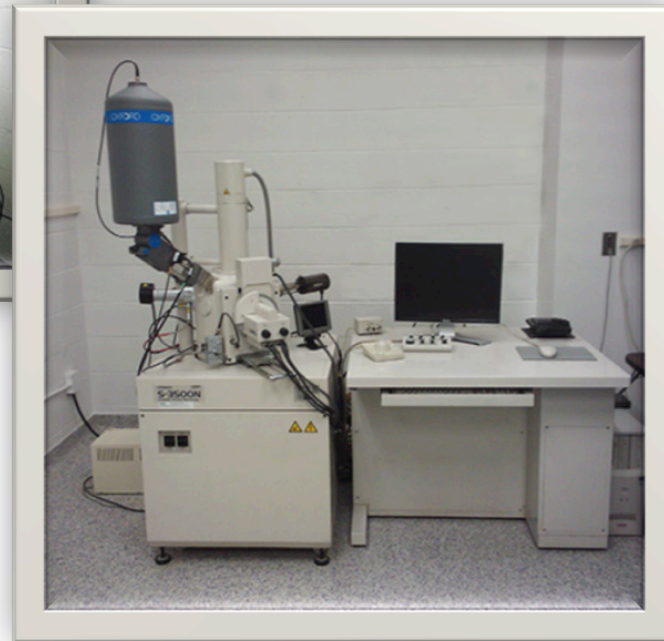
Facilities

- Enhance lab and food animal research and teaching infrastructure
 - Completed
 - 2nd floor of Mosier Hall for ICCM and NICKS
 - Mosier BSL-2
 - Veterinary Medial Library
 - Student Services Center
 - Café
- Renovate research labs and build a stand-alone KSVDL

Electron Microscope Facility

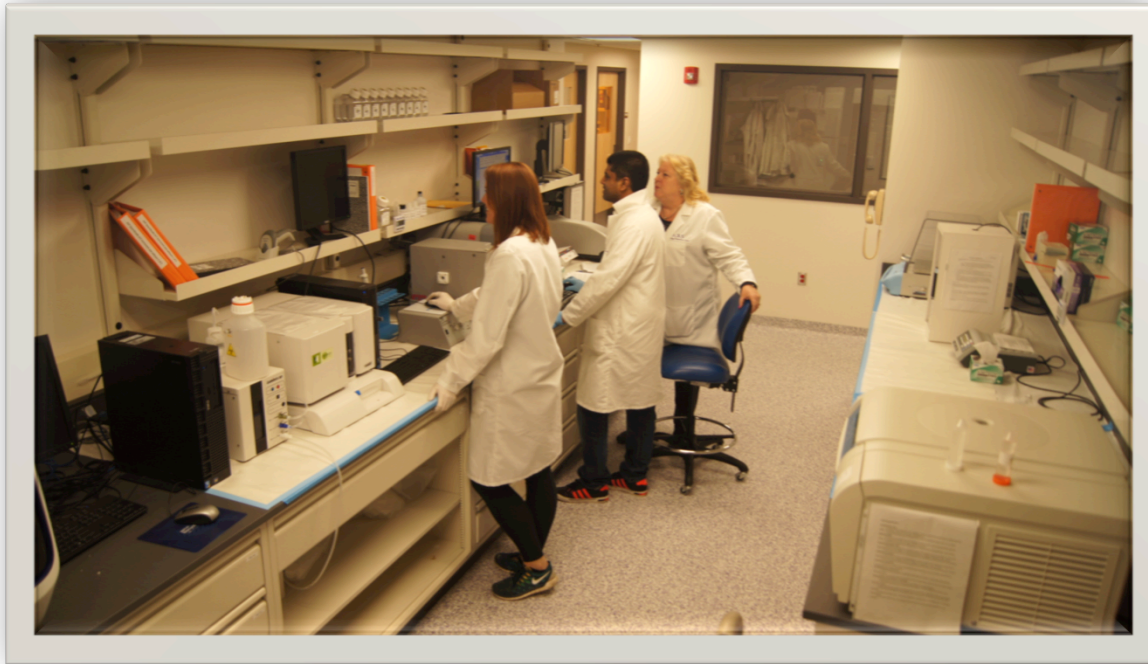


Renovated space for a new Electron Microscope Facility providing transmission and scanning electron microscopy capabilities.



**Completed in
September 2013**

Mosier Hall Research Center



A 16,000 sf renovation providing offices, conference and support rooms, and BSL-2 research lab space in Mosier Hall.

Completed in 2014

Veterinary Medical Library Renovation



Completed in January, 2015

New Mosier Hall BSL-2 Lab



A 3,000 sf BSL-2 research lab in Mosier Hall

Completed in August 2015

Student Services Center



A 1,500 sf renovation providing offices and support rooms for the CVM's Testing Center and Counseling Services.

Completed in August 2016

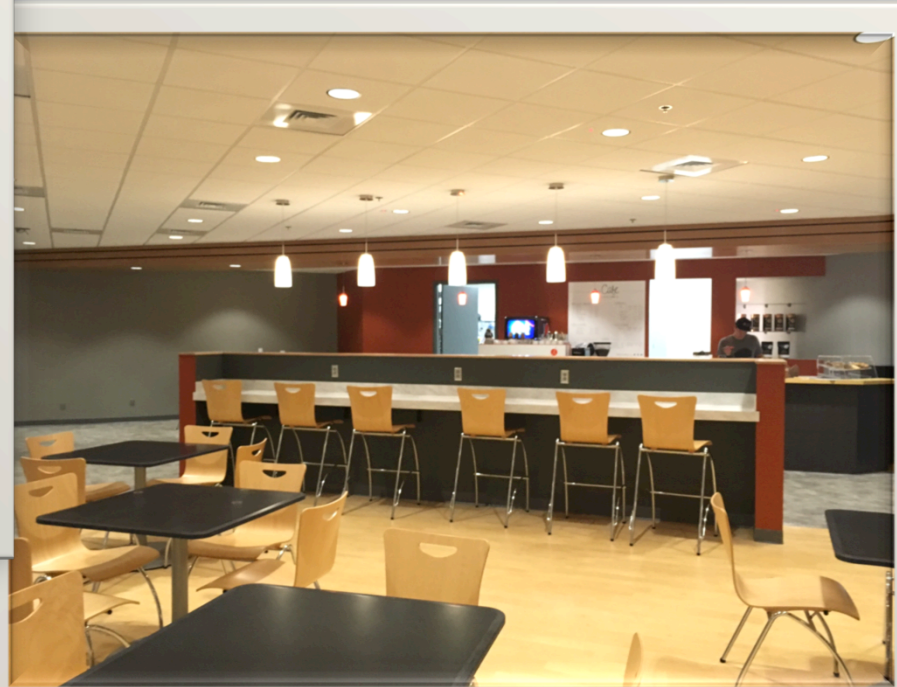
Trotter Hall “Café”



A 2,500 sf renovation of the Trotter Hall lounge.



Completed in September 2016



Equine Performance Testing Center



Complete in early 2017

MRI Facility



Construction of a new MRI facility has begun with replacement of a 3 tesla (T) MRI system with a new 3.0 T magnet providing a new high-resolution MRI system for the Veterinary Health Center.

Complete in early 2017

Trotter Hall Anatomy Lab



Design and construction documents are being prepared with construction expected to begin in May 2017.

Trotter Hall Anatomy Lab



Trotter Hall Anatomy Lab



Kansas Veterinary Diagnostic and Research Center (KVDRC)



A multipurpose facility for ***diagnostics, research and teaching*** providing modern, efficient, and biosecure operational space for the *Kansas State Veterinary Diagnostic Laboratory*.

With

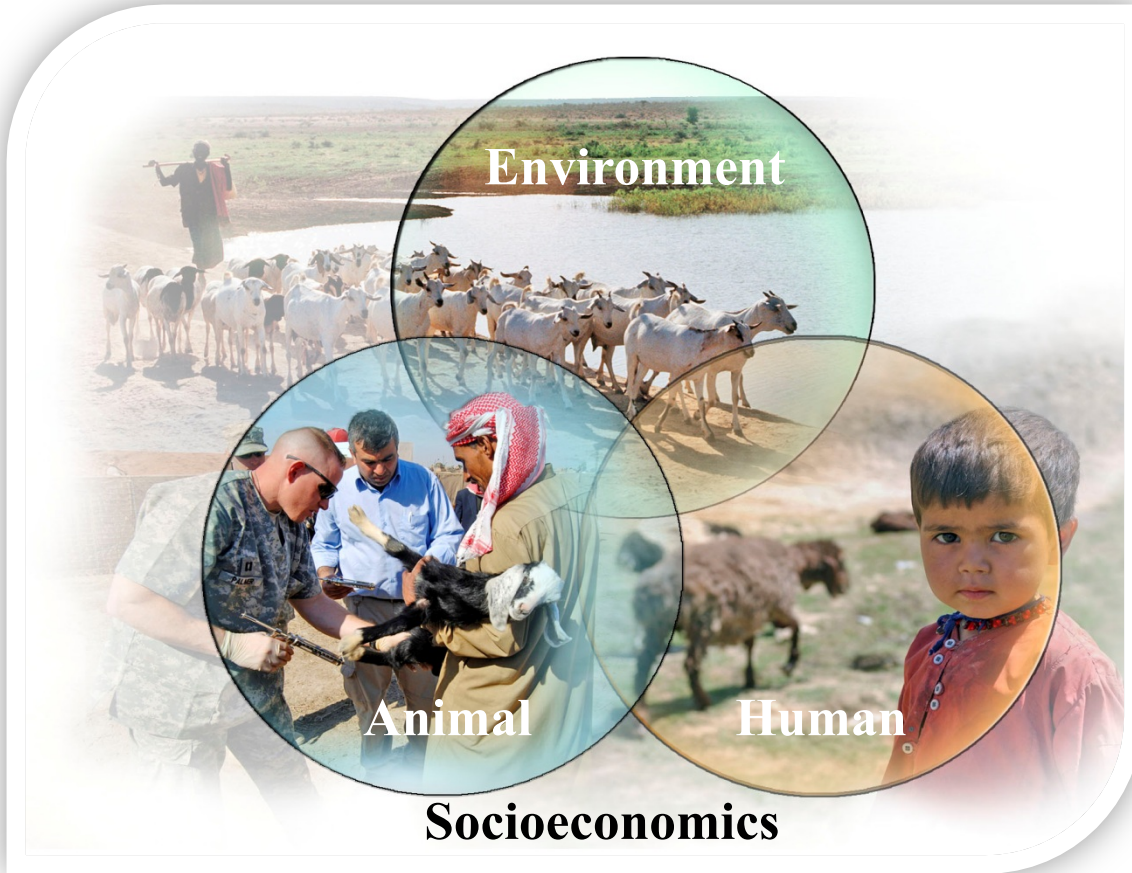
- Expanded opportunities for research,
- Enhanced ability to recruit and retain faculty, and
- Enhanced capability to train the next workforce generation in diagnostics and research.

Planning for the KVDRC continues



STRATEGIC PLANNING

“Animal Health/One Health”



- Secure Food Supply
- Human/Animal Bond
- Livestock Diseases
- Zoonoses
- Antibiotic Resistance

70%

More than 70% of the infectious diseases identified in humans since the 1940s can be traced to animal origins³.

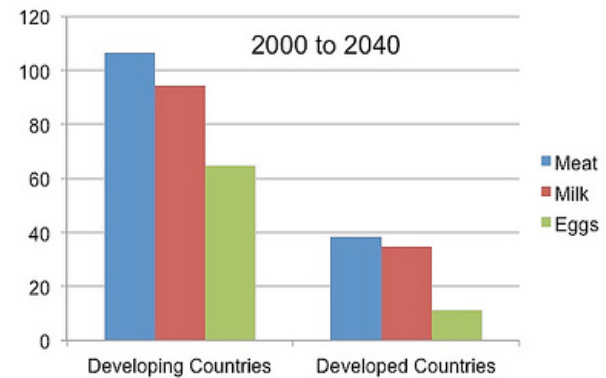
External Influences and Societal Requirements



Global Food Security



Percentage increase in demand for livestock products



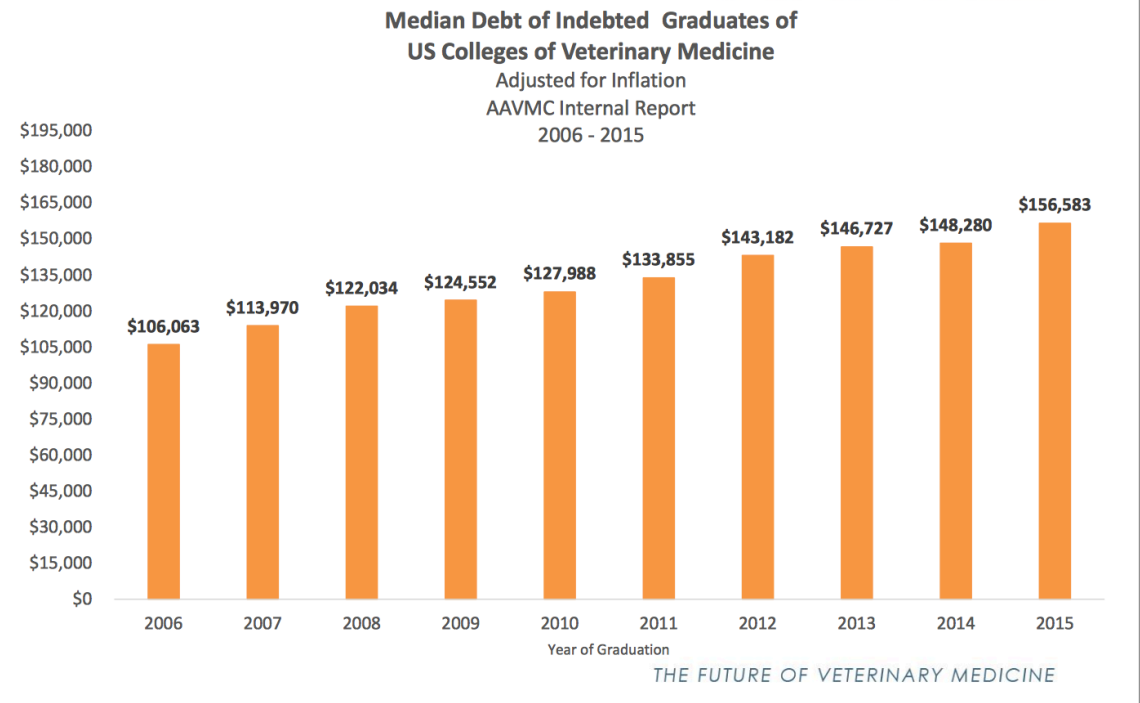
Far higher growth in demand will occur in developing countries

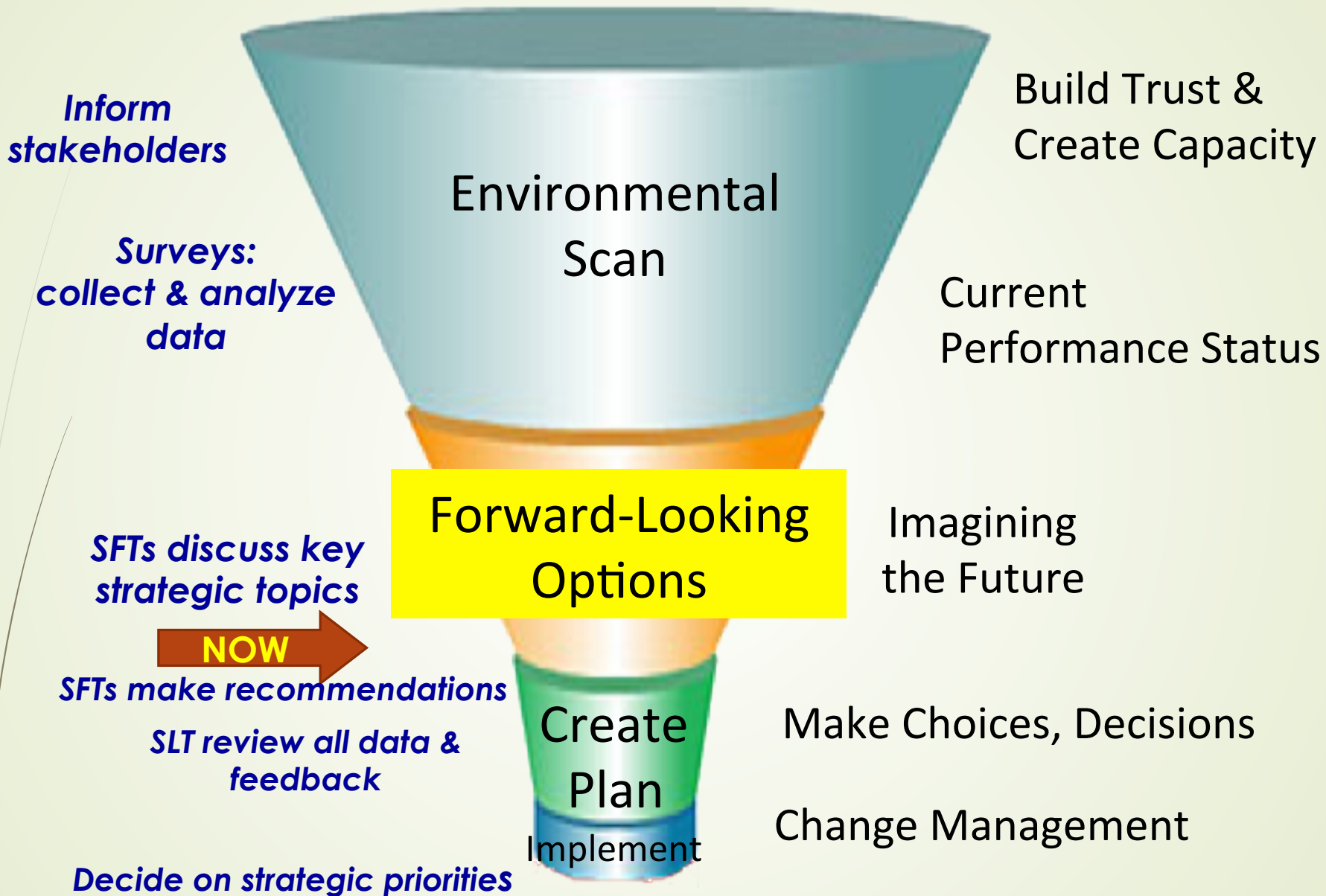
IFPRI-ILRI IMPACT model results



Leading the Future of Academic Veterinary Medicine

- Student Debt
- Curriculum
- Wellness
- Tuition
- Scholarships





Strategic Planning



Strategy Focus Teams

1. Curriculum
2. Teaching & Clinical Education
3. Funding Model: Cost of Education; Admissions; Fundraising
4. Food Animal Focus
5. Work Environment & Staffing
6. Research Focus & Graduate Education

7,058 K-State DVMs





QUESTIONS?