

---

# Division of Student Life

---

**K-STATE**  
**2025**

**KANSAS STATE**  
**UNIVERSITY**

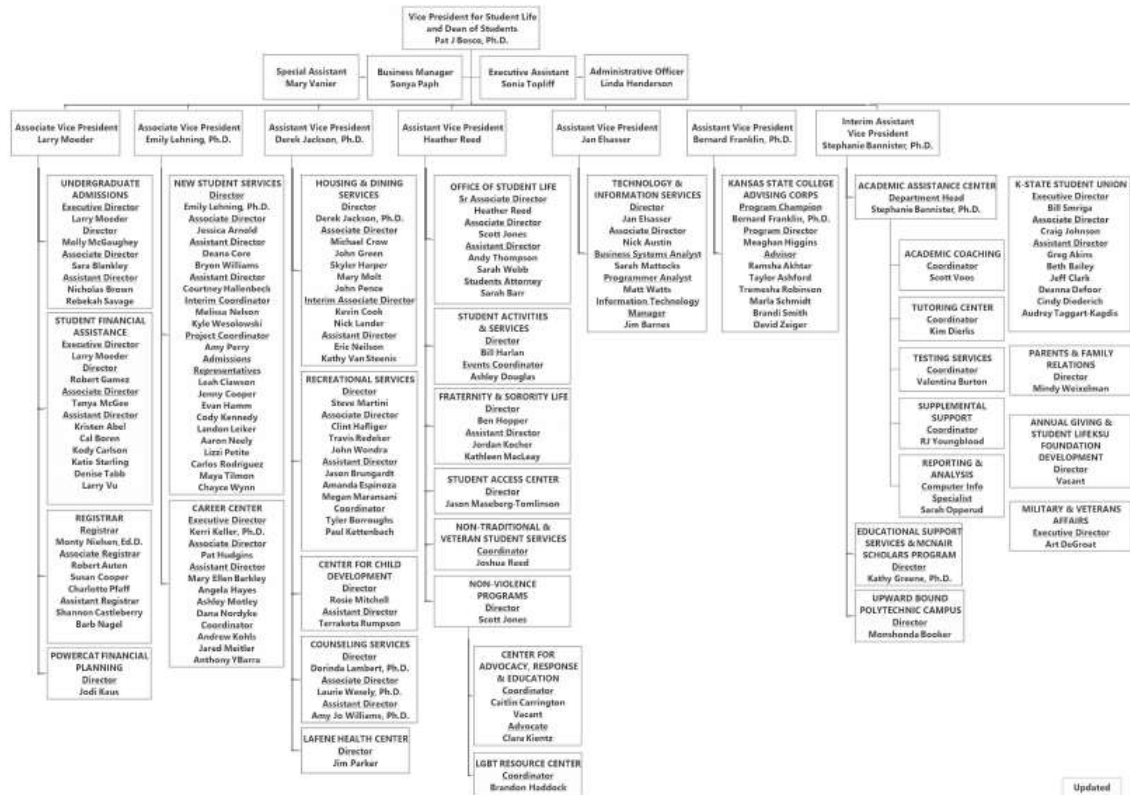


**Division of Student Life**  
**5 Year Outcomes Report**  
Fall 2016

# Reorganization

**KANSAS STATE UNIVERSITY**

Vice President for Student Life



Updated 9/22/16



# Division of Student Life

- **Vision:** Student Life programs will advocate support, and prepare students to achieve academic success while maximizing their personal and professional potential as we become a top 50 public research institution
- **Mission:** The Division of Student Life promotes student success through opportunities for student involvement experiences to strengthen personal and academic growth, leadership, and professional development, and community engagement



LEADING THE WAY:

# Theme 1

## Research, Scholarly and Creative Activities, and Discovery



# Housing and Dining

- Kramer Dining Center
- State of the art facility designed with a teaching platform connecting the classroom with our residential facilities.
- Food production courses are being offered to interactively engage research and learning in the midst of campus life.



# Financial Assistance and Planning

## 2016

- A sustainable, nationally recognized financial planning program.
- 8,655 students and alumni have activated their SALT account

2012 Powercat Financial Counseling recognized as a model program at a White House Summit.

2013 Selected to administer a grant collaborating with campus to increase financial education for students.

2014 U.S. Secretary of Education, spotlighted Powercat Financial Counseling as a financial literacy program to emulate.





# Health and Wellness

- Recognition as the ***Active Times.Com #8 Fittest Campus*** demonstrates our investment in creative activities designed to benefit the health and wellness of the university community and beyond.
- One of the largest college rec centers in the country, launched the Wildcat Wellness Coalition program which strives to shine light on health and wellness issues related to the campus community.
- Collaboration and planning with Campus Wellness affiliates: Recreational Services, Lafene Health Center, Counseling Services, Student Life and Student Government has led to a proposal for Master Planning Consultant to inventory and plan for future development.





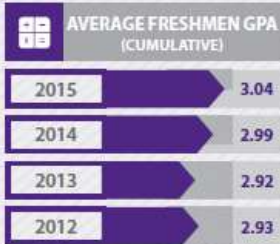
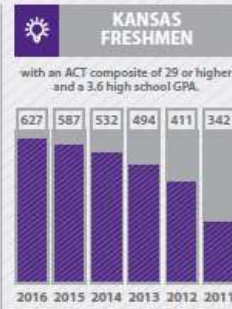
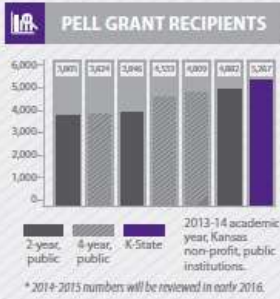
# Theme 2

## Undergraduate Educational Experience

# Recruitment and Admissions Efforts

- #1 choice for Kansas high school graduates
- Fall 2016 freshman class represented an average ACT score of 25.1.
- Fall 2016 freshman class average is the highest average ACT of any incoming class at K-State. This class included 627 students from Kansas with an ACT composite of 29 or higher and a 3.6 high school GPA.

## K-STATE STUDENT SNAPSHOT





# Academic and College Success Strategies Support

- Student Success Workgroup increased collaboration with the academic community, merging Plan 4 Success and Pilots into the rebranded Academic Coaching Program moving the academic coursework to K-State First.
- In collaboration with K-State First increased programming and support contributing to a overall freshman-to-sophomore retention rate that continues to improve from 81.0% in Fall 09 to 85.1% in Fall 16
- A series of strategic steps including participation in the space migration plan and conducting a Student Success Workgroup has led to restructuring across the division.



# Career Exploration, Planning and Placement

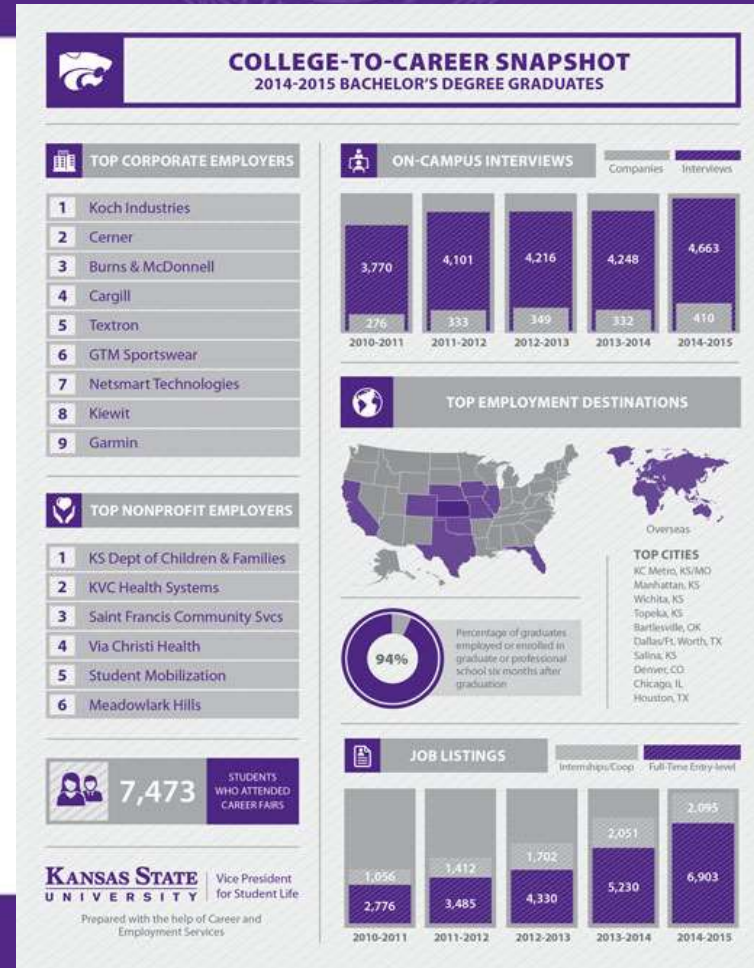
- Opening the Berney Family Welcome Center allowed for the rebranding of the Academic and Career Information Center (ACIC) and Career and Employment Services (CES) as the “Career Center”.
- K-State was ranked #1 for best career services in 2015 edition of Princeton Review’s Best 379 Colleges.
- Today the Career Center thrives, meeting with more than 1,400 students exploring majors and choosing career paths.



Photo Credit: KSU Foundation

# Career Exploration, Planning, Placement

- 94% placement rate for 2014-15 graduates obtaining employment or pursuing additional education.
- Career fair attendance increased to 4,563 student participants and 794 employers.
- Launched a internship tracking project to centrally document when, where, and with whom students are completing credit-bearing and co-curricular internships.







# Health and Wellness

- Our efforts to support the success of students is evident in our expanded outreach and growth in health and wellness contacts.
- CARE now provides confidential advocacy to any K-State student, faculty, or staff member who has been impacted by sexual violence.
- LGBT Center awarded 4 out of 5 Stars from Campus PRIDE.

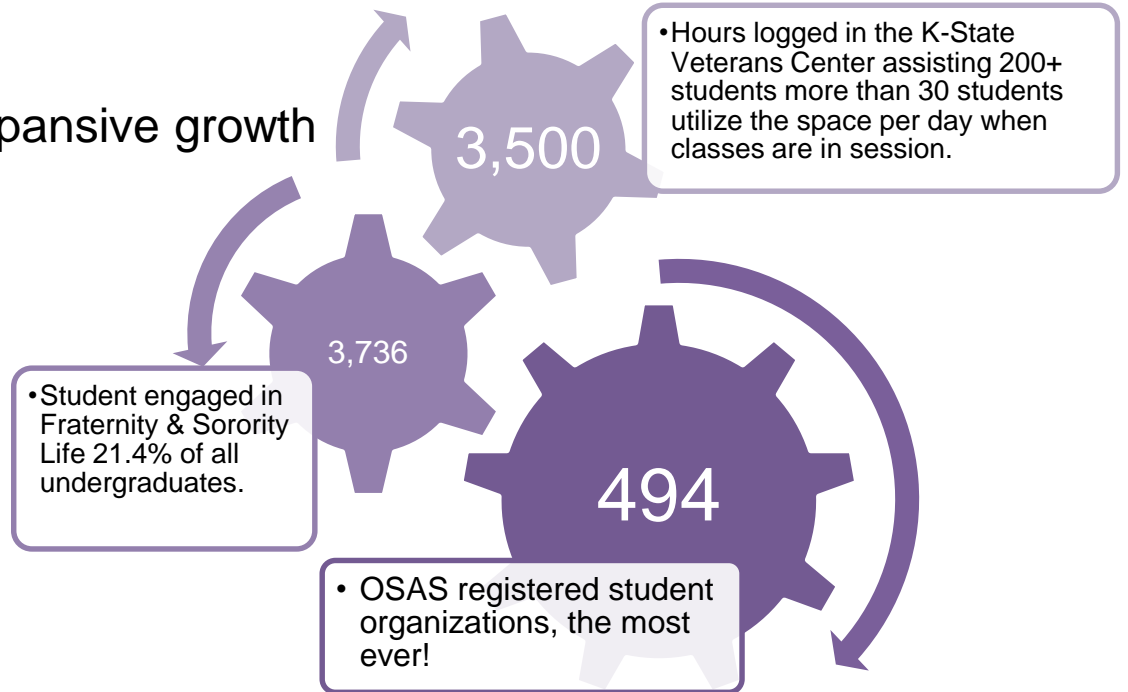
8,745 Number reached by Counseling Services through a variety of outreach efforts

2014 Lafene achieved reaccreditation through the Accreditation Association for Ambulatory Health

2,000 additional appointment slots created for patients at LHC through the reorganization of clinic schedules and staffing

# Student Leadership and Involvement

- The last 5 years has seen expansive growth of student involvement.

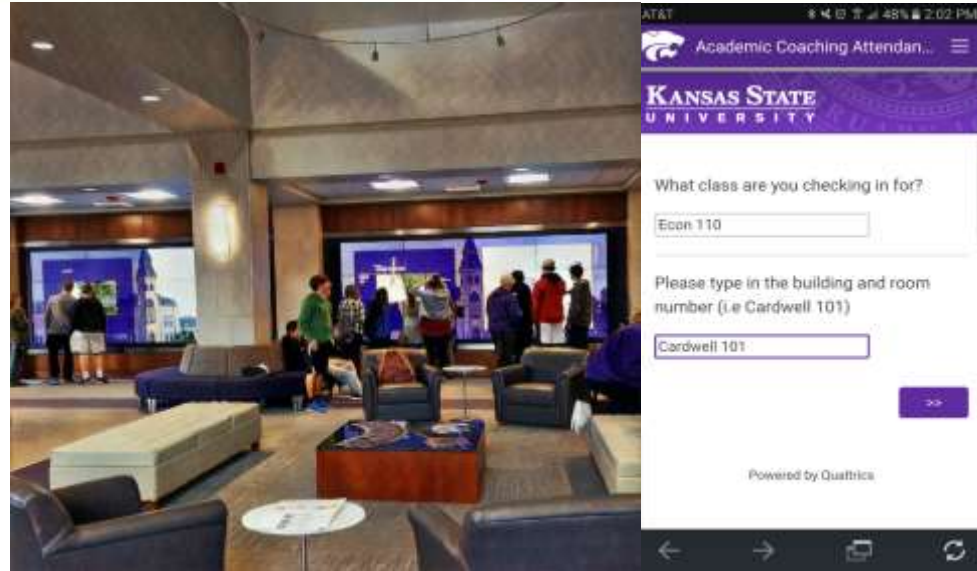




# Student Service and Technology

Reorganization has allowed us to further develop our Student Life Information Technology Service area.

- Unofficial transcript
- Curriculog
- Welcome Center Interactive Wall
- Coaching Attendance App
- Camera Installation
- CLIE
- Transfer Equivalency Tracking
- Childcare Check-in
- Talisma outreach to Global Campus and International Programs



## KANSAS STATE UNIVERSITY | Unofficial Transcript

STUDENT NAME		STUDENT NUMBER	
[REDACTED]		XXX-XX-XXXX	
BIRTH DATE	ACADEMIC PROGRAM	ACADEMIC PLAN	AC
04/20/YYYY	AS UNDERGRADUATE DEGREE	SOCIAL SCIENCES-BS MAJOR	
EXTERNAL DEGREES			
BUTLER COMMUNITY COLLEGE			
12/14/2007	ASSOCIATE OF SCIENCE		



LEADING THE WAY:

# Theme 3

## Graduate Scholarly Experience



# McNair Scholar Programs

- A TRIO Program funded by a grant from the US Department of Education to prepare talented undergraduates for graduate study, with the goal of increasing the number of Ph.D. recipients from underrepresented socio-economic and ethnic groups.
- K-State McNair Scholar's celebrated 20 years, currently is mentoring 19 students and this past year recognized 4 K-State McNair Alumni who earned PhD's.





# Theme 4

## Engagement, Extension, Outreach and Service

# Center for Child Development

- Nationally Accredited Childcare Center - only 8% receive this honor nationally.
- The Center is the only center in Manhattan that is an official Army Childcare in Your Neighborhood program providing subsidies to 35 military parents who attend classes at K-State.



# Military Affairs

- Completed 7th year of K-State-Fort Riley partnership, as the only comprehensive partnership of its kind in U.S.
- K-State gaining national reputation for expertise in Post-9/11 era veterans transition issues.





# Creation of the K-State Advising Core

- The Kansas State College Advising Corps is supported by grants from the Kauffman Foundation and the National Academic Advising Association. It is a "best fit" college advising model that helps low-income, first-generation college and underrepresented high school students.
- The pilot year will serve six high schools from the Shawnee Mission School District, the Olathe School District and the Turner School District.
- More than 10,000 students enrolled in the six partner high schools will be direct beneficiaries of this program.





# Theme 5

## Faculty and Staff





# National Staff Leadership and Engagement

Student life leadership is influencing and transforming higher education through professional development, leadership and service.

- Dr. Derek Jackson, was elected to the board of the Association of College and University Housing Officers International.
- Dr. Pat Bosco, awarded the Distinguished Service Awards by the Fraternity Executives Association and to Ingram's 50 Kansan's You Should Know.
- Dr. Jackson and Dr. Stephanie Bannister were selected to serve as faculty at the South Africa Housing Training Institute.
- Dr. Mary Molt was named "Top 20 Most Influential" by Food Service Director Magazine.
- Monshonda Booker elected as State Representative of the Missouri, Kansas, and Nebraska (MO-KAN-NE) Chapter of Educational Opportunity Association.
- Powercat Financial Counseling Director, Jodi Kaus, represents the US Dept. of Education's Office of Federal Student Aid speaking on the success of K-State's financial education programs.



# Staffing Advancements

- Within our wellness programs we are transforming undergraduate education by adding a mental health nurse practitioner to the medical staff of the health center. This offering brings medically oriented mental health services to Lafene Health Center for the first time in history.
- A Communicable Disease Nurse was added to staff at Lafene Health Center staff in order to appropriately respond to the threat of communicable diseases. This position helps to manage and educate the campus community regarding infectious diseases frequently associated with university campuses.



LEADING THE WAY:

# Theme 6

## Facilities and Infrastructure



# Renovated Chester E. Peters Recreation Complex



# Wefald Hall





# Tutoring and Testing Relocation





# Newly renovated K-State Student Union

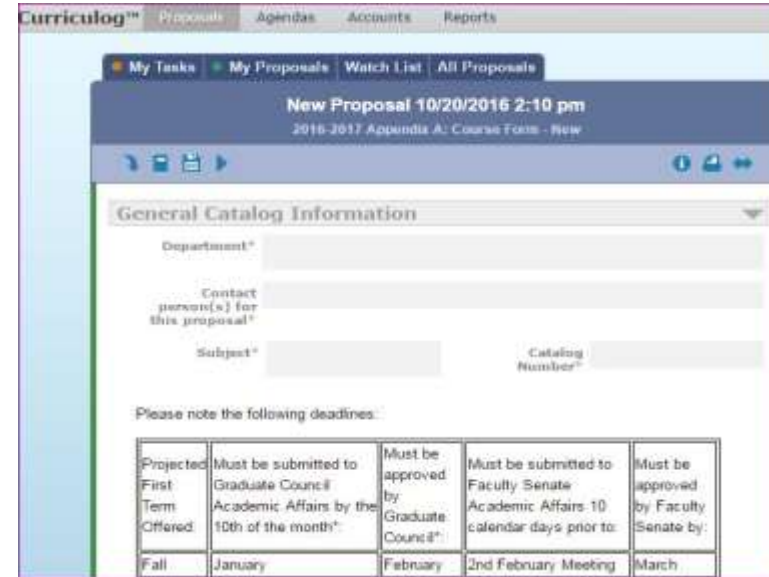






# Technology and Infrastructure Projects

- Through the Talisma system during the academic year, we were able to respond to over 34,000 inquiries from prospective students. Over 1.5 million messages were sent to prospective students.
- The Implementation of curriculog automated all course and curriculum approvals and changes for all academic departments and colleges. This effort was led by the Office of the Registrar. Collaboration has led to the implementation of an electronic/real-time catalog for undergraduates.





# Rebranding and Shared Service Collaboration and Planning

Several key rebranding and shared service projects have allowed for meeting evolving student needs.

- The office of Disability Support Services is now the Student Access Center to reflect the philosophy of putting people first. The emphasis is on the accessibility of the environment rather than the individual.
- Collaboration and planning with Campus Wellness affiliates: Recreational Services, Lafene Health Center, Counseling Services, Student Life and Student Government has led to a proposal for Master Planning Consultant to inventory and plan for future development of Campus Wellness programming and possible facility development. A master plan is underway scheduled to present findings in April of 2017.
- A new food service model for the K-State Student Union is underway and direct relationships began with various food providers, resulting in commissions paid to the Union. Follett has replaced Varney's and operates the bookstore, now called the K-State Campus Store. This move will be enhance revenues to the K-State Student Union.

# Campaign Update

Our goal is **48** million dollars and to date we are **96%** of the way to reaching that goal.

- Welcome Center
- Need Based Scholarships
- General Scholarship
- Parent and Family Initiatives

