
Graduate School

K-STATE
2025

KANSAS STATE
UNIVERSITY

Graduate School Accomplishments 2011-2016





Mission

Provide exceptional graduate student services that enhance professional and career development, support graduate student research and scholarly endeavors, and create a diverse and inclusive environment that promotes interdisciplinary and cultural interaction, all while advocating for competitive compensation packages for all students.

Major Accomplishments

- Greater visibility of graduate education
- Enhanced operational efficiency
- Increased professional development opportunities for graduate students
- Approval of new graduate degree and certificate programs

Major Accomplishments (Cont.)

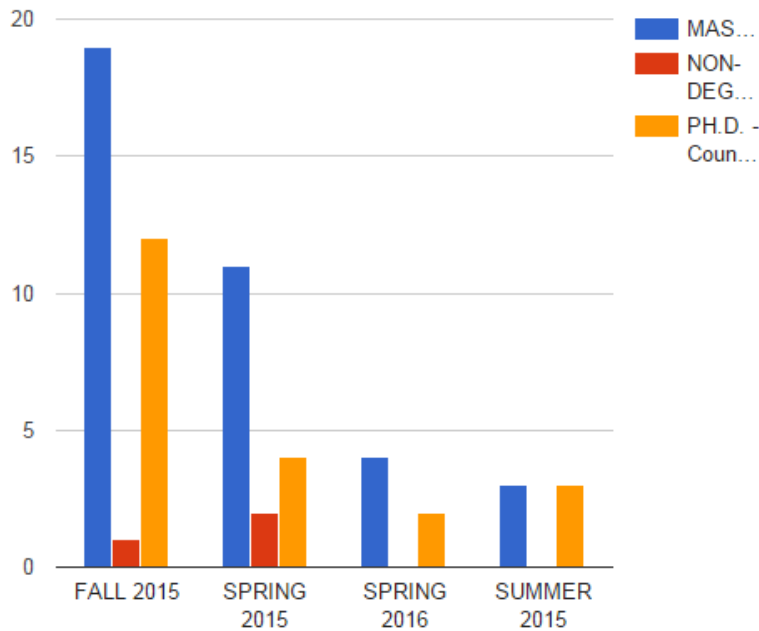
- Enhanced recognition of graduate student accomplishments
- Initiation of fund raising efforts in collaboration with K-State Foundation
- Enhanced engagement with alumni
- Obtained space in Eisenhower for Graduate School team offices and collaborative space for graduate students

Enhanced Operational Efficiency

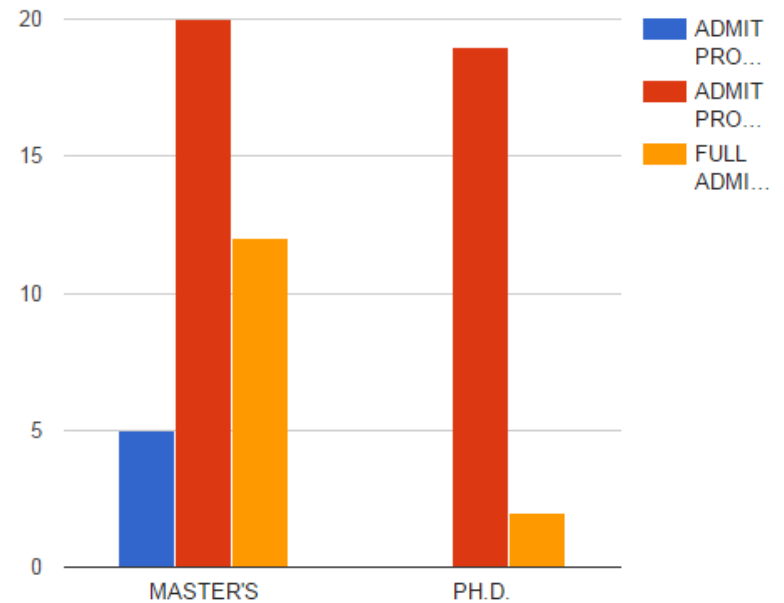
- CollegeNet enhancements and training
 - Improved checklist of students
 - Financial information interface and documents for international students
 - Enhanced instructions on completing applications
 - Dashboards created for each graduate program
 - Individual and group training provided
 - Prospect communication tool added

Sample Dashboard

YTD Admitted by Term for Electrical & Computer Engineering

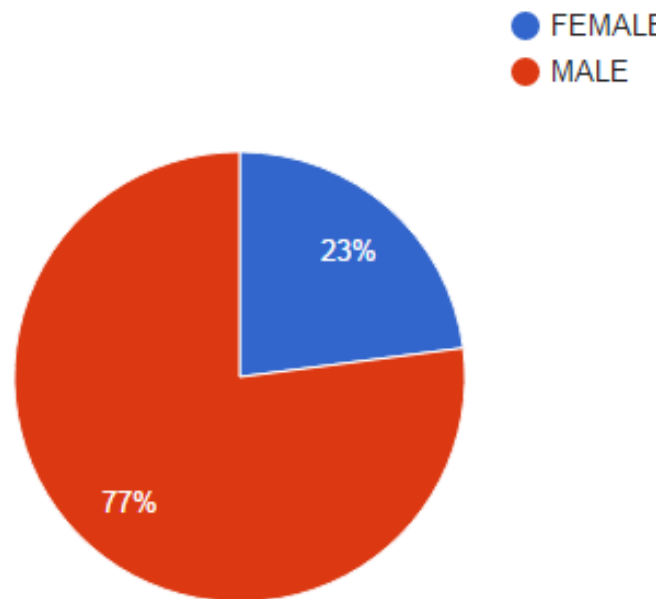


YTD Admitted by Ph.D., Ed.D. and Masters for Electrical & Computer Engineering

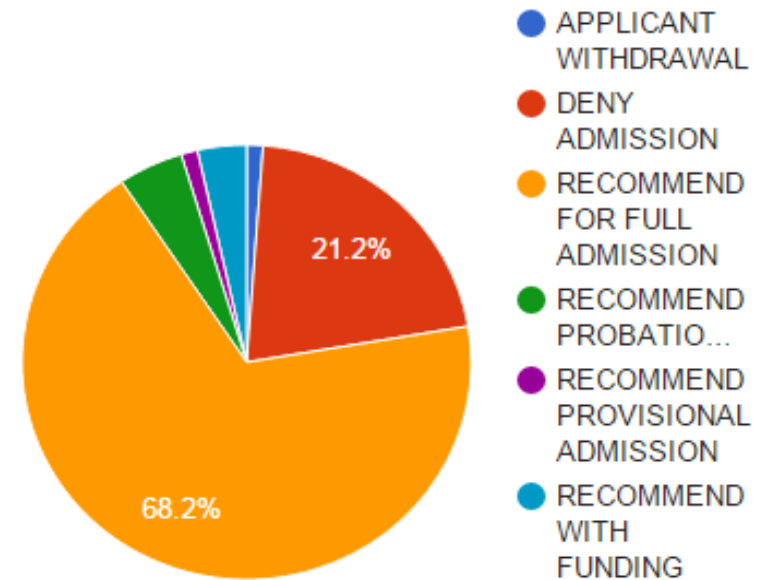


Sample Dashboard

YTD Admitted by Gender for Electrical & Comp Engineering



ECE Funding for Electrical & Computer Engineering



Enhanced Operational Efficiency

- Realignment of degree specialists responsibilities
 - Work with both masters and doctoral students from assigned colleges to process documents and accept ETDRs from submission of program of study through graduation
- Initiated weekly Graduate School e-newsletters to replace multiple emails (2015)



New Programs

- Degree Programs
 - 1 Ph.D. Pending KBOR Approval
 - 1 Ph.D. approved
 - 5 M.S. approved
- Certificate Programs
 - 14 approved

Doctoral Degrees Awarded 2011-2016

- 2015-2016 179
- 2014-2015 190
- 2013-2014 166
- 2012-2013 148
- 2011-2012 162



New Initiatives

- Arts, Humanities and Social Sciences Small Grant Program (\$10,000 awarded to 10 students 2015 and 13 in 2016)



Aaron Bisch and Glen Jarrett, received the Arts, Humanities and Social Sciences Small Grant and conducted research in Nicaragua for a model school.



Professional Development and Student Success Workshops and Seminars

- University Partnerships
 - GSC
 - K-State Libraries, Powercat Financial Counseling, Writing Center, Career Center, and Leadership Studies
- Professional development opportunities
 - Grant Writing
 - Negotiation Skills
 - Leadership Development
 - 3 Minute Thesis

Student Recognition

- Graduate Student Appreciation Week





Current students

- Academics
- Admissions
- Current Students**
- Financial Support
- Faculty & Staff
- Alumni

- Graduate Student Council
- Graduate Student Life
- For Doctoral Candidates
- For Master's Candidates
- Graduation and Commencement
- Theses, Dissertations, and Reports
- Graduate Handbook
- Archived Workshops and Forums
- Awards
- Three Minute Thesis Competition
- We are a safe and caring campus. Please report anything you see. [More information about Title IX.](#)
- Graduate School**
Kansas State University
103 Fairchild Hall

Current Students

Congratulations! As a graduate student at Kansas State University, you are part of an exciting journey at one of the world's greatest public universities! Graduate study requires high academic achievement that will extend your experience and capabilities within the advanced, specialized areas of your chosen field. The Graduate School is here to help you achieve success in graduate studies and your life beyond graduation.



Graduate study objective

A common objective of graduate studies is to develop the capacities you will need for independent study and research, scholarship and creative discovery. All doctoral programs and most master's programs develop your capacities through advanced course work and through original research under the direction of faculty members who are experts in their fields. While

Tweets by @KSUGradSchool

K-StateGradSchool @KSUGradSchool

Fall graduates! Plan to eat breakfast together and celebrate the last days of grad school at Grad Bash. RSVP now one.found.ksu.edu/ccon/events_ac



3h

K-StateGradSchool @KSUGradSchool

Two K-State grad students will represent the university as the nominees for the MAGS Excellence in Teaching Award bit.ly/2gfjwIP



Recruitment

- Implemented Prospect Module of CollegeNet effective Fall semester 2016
- Goal is to enhance communication to perspective graduate students and graduate programs and the Graduate School



Enhanced Faculty Mentoring

- Mentoring Modules for Advising Doctoral Students
- Graduate Council approved requirement of an Annual Review of Graduate Students effective Fall semester 2016. Programs create the model that works for them.

Support for Graduate Students

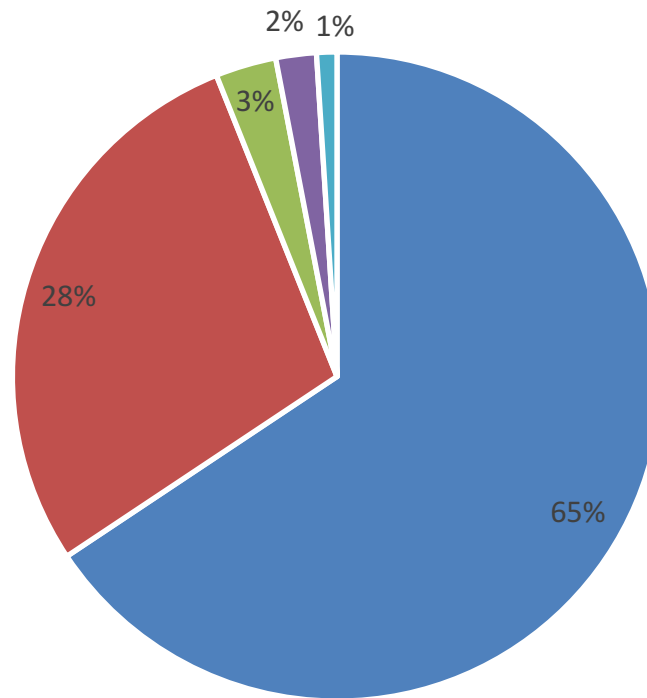
- Tuition for GRAs
 - Data to determine costs of program
 - Inclusion in University Budget Proposal
- Increased Stipends for GTAs and GRAs
 - Some colleges have been successful in minor increases
- Fellowship Opportunities
 - Workshops in Collaboration with Office of Research and National Competitive Scholarship Office

Fundraising Goal

- Raised \$437,233 (44% of Goal)
- 62% endowed
- 38% expendable
- Student Success (40% of Goal)
- Excellence (107% of Goal)
- Programmatic Support
(110% of Goal)



Donor by Category



■ Donors ■ Faculty/Staff ■ Corporations ■ Friends ■ Foundations ■

Alumni Relations

- Inaugural Alumni Reunion April 2015
- Graduate School e-newsletter
- Alumni visits
- Alumni Tailgate 2015
- Social Media





Facilities and Infrastructure

- Move into new space in Eisenhower Hall by Summer 2016
- Graduate Student Life Center
 - New Collaborative Space on Third Floor
- Office Space for Graduate School Team



Priorities FY 2017

- Continue to advocate for more competitive stipends and tuition support for all GRAs
- Implement Prospect to enhance recruitment
- Work with ISO to create an automated system for submission of documents to the Graduate School with electronic signatures

Priorities for FY 17

- Continue to enhance Student Services
 - Focus on excellent customer service for all constituents
 - Implement Strength Quest
 - Provide professional development opportunities that differentiate K-State from our peers
 - Work collaboratively with the Research Office to provide professional development experiences for Post Docs
 - Expand participation in the Three Minutes Thesis and other research and scholarly events



Priorities for FY 2017

- Continue to focus on enhanced alumni relations and fund raising
- Relocate Graduate School to Eisenhower at minimum cost
- Engage graduate students in planning the collaborative space on 3rd floor of Eisenhower

Graduate School Team



QUESTIONS

Graduate School
103 Fairchild Hall