

---

# College of Architecture, Planning & Design

---

**K-STATE**  
**2025**

**KANSAS STATE**  
**UNIVERSITY**

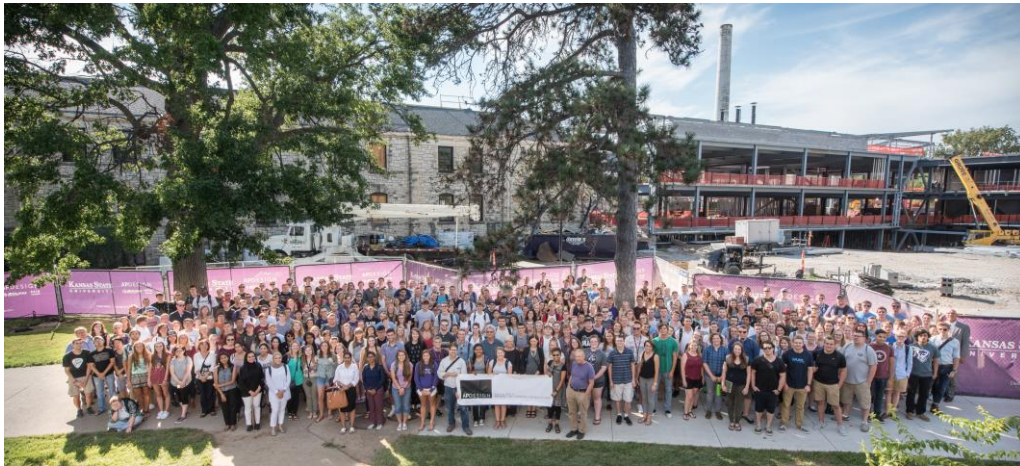
# College of Architecture, Planning & Design

at Kansas State University

2025

# Mission & Vision

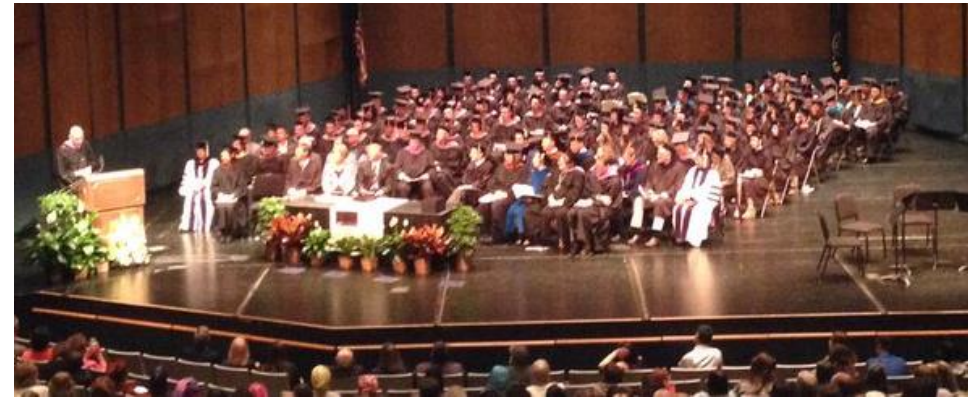
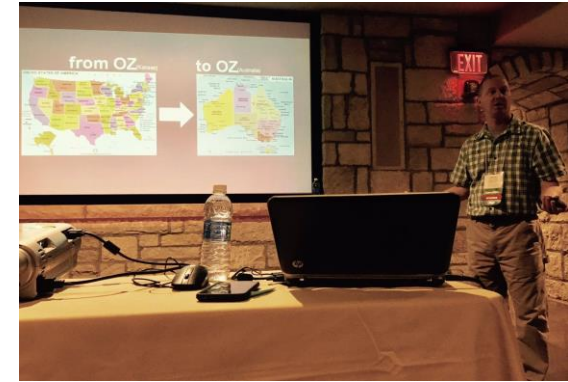
APDesign's mission is to be a comprehensive design community comprising all scales of the design and planning endeavor, informed by a culture of inquiry, focused on the significant issues facing our society including environmental stewardship, social equity, economic viability, and aesthetic delight in support of the University's mission as a Land Grant institution.



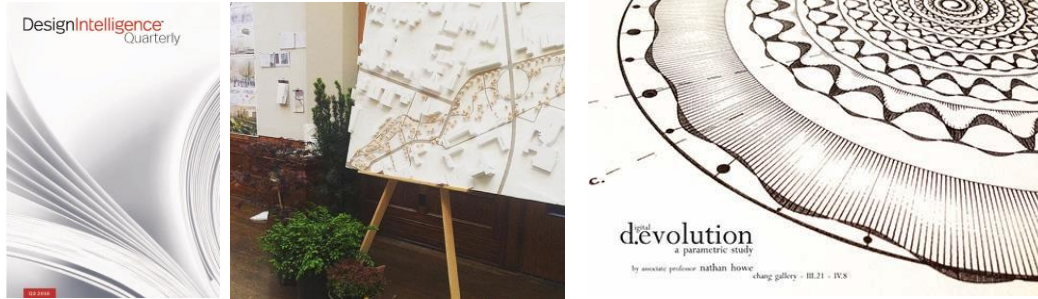
APDesign's vision is to be a nationally recognized center of design and planning excellence and a nexus of interdisciplinary engagement, outreach, and research serving the University, the profession, and society.

# 2025 Commitments

- A creative, stimulating environment that inspires shared learning and creative growth;
- A motivated and compassionate diverse faculty and staff committed to excellent teaching, relevant research and exemplary service to the community and the profession;
- A relevant, dynamic curriculum built on a paradigm of reflective practice;
- An inquisitive, creative and diverse student body, actively engaged as leaders within the College, the University and the profession;
- A network of external constituents who are actively engaged in support and advocacy of the College;
- Sustained funding matched to the objectives and strategies adopted by the College.

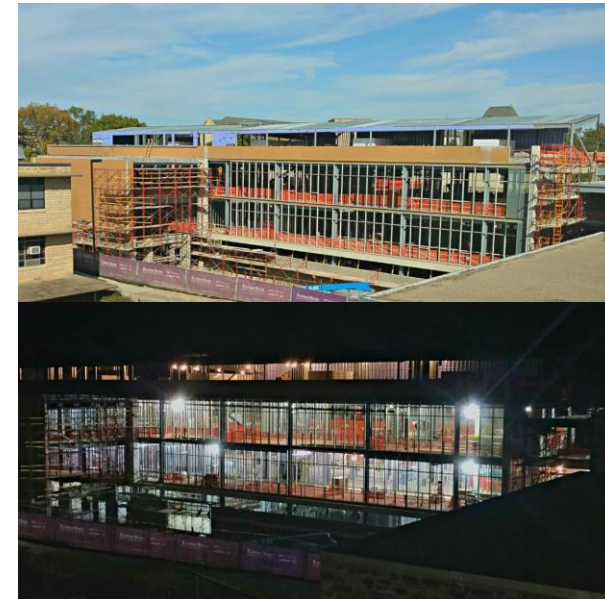


# Positive Impacts



- Less than a year away from the completion of the Seaton Renovation & Expansion Project.
- Lead the university in retention and graduation rates.
- Donor support has been better than ever.

- Ranked programs.
- Research proposals and awards are increasing.
- Increasing number of community focused Design + Make projects.



2025

# Development Summary

**Campaign Progress: 94% of Goal**  
**77% of Days into Campaign**



**Campaign Progress**  
\$26,334,549

**Campaign Goal**  
\$28,000,000



As of July 2016, APDesign's endowed funds totaled \$6,784,883. Deferred commitments that are designated towards permanently endowed funds total \$3,956,000. (\$10,740,883 total)  
[2025 Goal: \$8 million endowment pool]

The college's annual donor support average is \$4,960,000 over the past 5 years.  
[2025 Goal: \$2.5 million yearly average]

As of September 1<sup>st</sup>, APDesign is at 94% of its Innovation & Inspiration Campaign goal.

Significantly increased the number of student scholarships awarded from 92 to nearly 200.  
[2025 Goal: 10 year goal of 200 scholarships reached]  
[I&I Campaign: 207% of student success goal reached]



# 2025

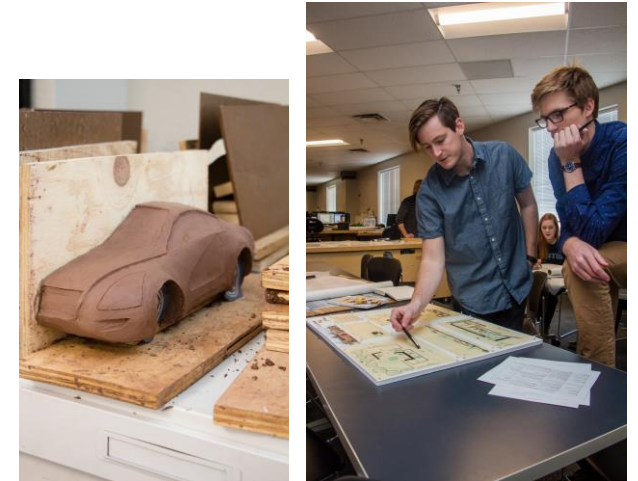
# RSCA&D Summary

## College-wide Summary of Funded RSCA&D (includes all funding/sources):

FY12-16	Awarded:	89 projects	\$1,702,686
	F&A (Facilities & Administrative)		\$227,419
FY12-16	Est. Proposed:	125 projects	\$21,803,714

## Departmental Summary of Funded RSCA&D FY12-FY16:

LARCP	Awarded:	63 projects	\$1,359,602
	Proposed:	108 projects	\$20,729,227
	F&A KSU		\$212,425
IAPD	Awarded:	16 projects	\$51,297
	Proposed:	19 projects	\$66,278
	F&A KSU		\$4,994
ARCH	Awarded:	10 projects	\$48,500
	Proposed:	14 projects	\$170,398
	F&A KSU		\$10,000



# 2025

# RSCA&D Summary

APDesign RSCA&D Summary by FY12-17 (first quarter) – External Funding Only:

	# of Proposals	Sponsors	Total Proposed	F&A Proposed	Total Awarded	Total F&A
FY17	5	5	\$816,660	\$216,190	\$118,913	\$37,737
FY16	17	9	\$10,641,305	\$2,990,441	\$36,603	\$12,285
FY15	10	6	\$3,864,871	\$1,025,441	\$0	\$0
FY14	9	7	\$5,276,062	\$1,654,210	\$47,060	\$12,987
FY13	6	6	\$1,000,972	\$318,717	\$112,256	\$31,060
FY12	10	7	\$1,558,909	\$446,092	\$861,576	\$212,178
Totals	57	28	\$23,158,779	\$6,651,091	\$1,176,408	\$306,247

2025



# Key Priorities

- Continue to provide the level of education our college is known for despite our temporary operating conditions.
- Exceed our Innovation & Inspiration Campaign goal while focusing efforts on faculty support and facilities enhancements.
- Prepare our new and renovated spaces for Fall 2017 classes.
- Successfully conclude a national search for an IAPD Department Head.
- Continue to develop and grow our post-baccalaureate programs.



- Continue building industry ties in building support for sponsored studios.
- Grow opportunities for student engagement with the profession.
- Support faculty and student opportunities for RSCAD recognition.
- Address research agenda for new experimental green roof.

# 2025

